

For Lease



# 566 Aero Drive NE, Unit 129

## Calgary, AB

- Available February 1, 2026
- 31,131 SF
- 3,766 sf office space with 1,041 sf office mezzanine
- 20,000 CFM MUA
- LED lighting
- ESFR sprinkler system
- 10 - 9' x 10' dock loading doors with 60,000 lbs levelers
- 2 - 12' x 12', 1 - 12' x 14' drive-in loading door
- Ample parking

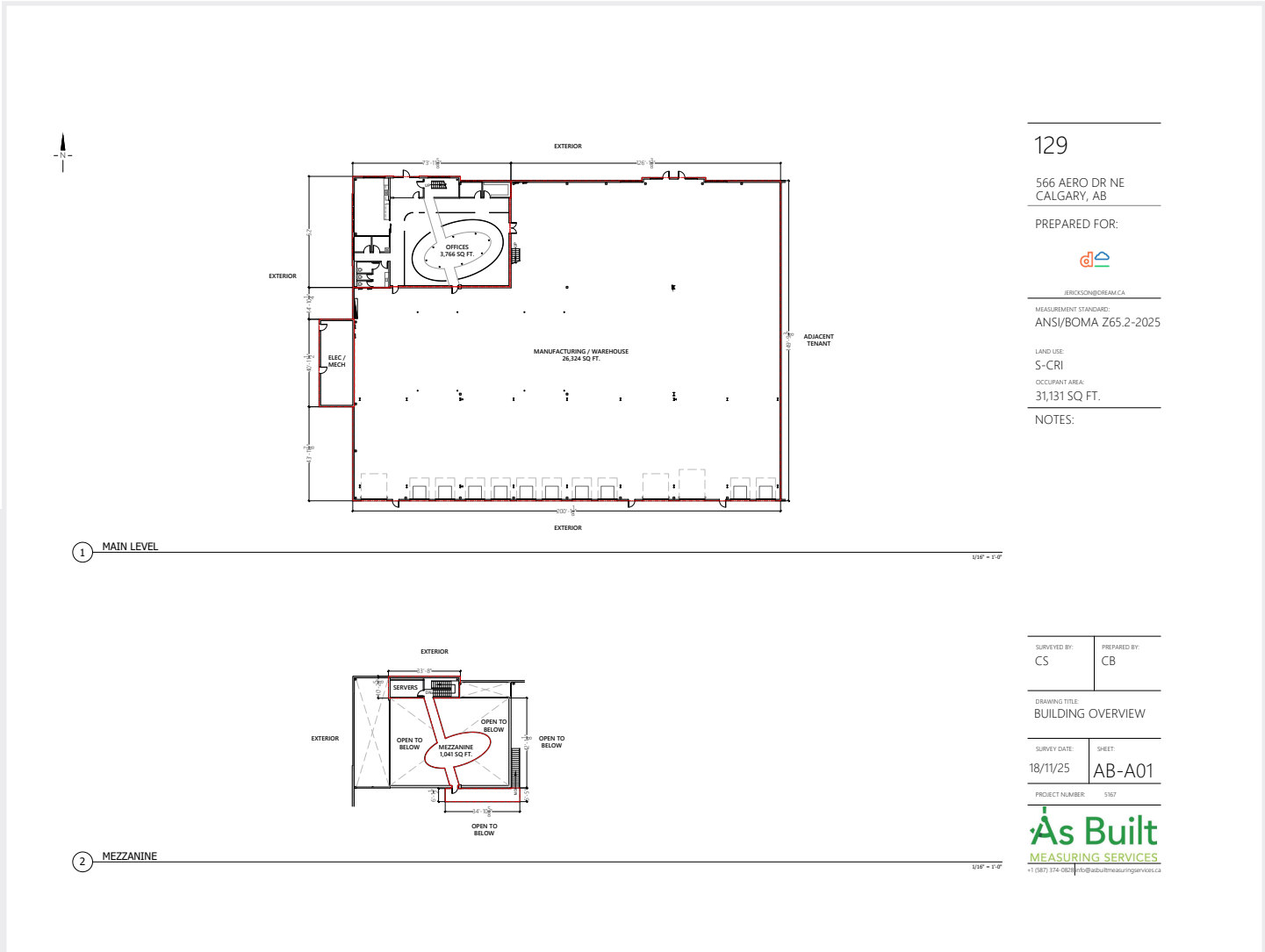


For leasing opportunities

Ford Williams, Director, Portfolio Management  
403.700.9794 | fwilliams@dream.ca

Dream Industrial REIT  
leasing.dream.ca

# Floor Plan



Available area:	Loading:	Ceiling Height:	Power:
<b>31,131 SF</b>	<b>10 Dock Doors 3 Drive-in Doors</b>	<b>24'</b>	<b>1600 Amps (347/600 Volts)</b>
Availability:	Rental Rates:	Operating Costs:	Zoning:
<b>February 1, 2026</b>	<b>Market Rates</b>	<b>CAM \$1.55 (Plus Mgmt Fee) TAX \$2.72 (est. 2026)</b>	<b>S-CRI (Special Purpose – City and Regional Infrastructure)</b>

# Photos



\*Cranes to be removed

Dream Industrial is an innovative and customer-focused owner, operator, and developer of high-quality industrial properties. Dream Industrial invests in and manages over 71 million square feet of industrial assets in Canada, Europe, and the United States for over 1,500 occupiers operating across a diversity of sectors. The organization has a track record of delivering best-in-class modern industrial properties globally, with a development pipeline that includes approximately 6 million square feet of active projects and an additional 7 million square feet available for expansion or built-to-suit purposes.

Dream Industrial is part of the Dream Group of Companies and is managed by Dream Unlimited Corp. (TSX:DRM), a leading global real estate asset manager and institutional investor with \$27 billion in assets under management. Dream Industrial is comprised of Dream Industrial REIT (TSX:DIR.UN) as well as several private vehicles.