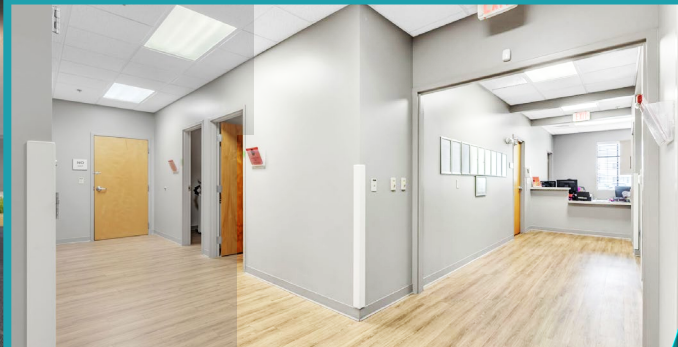


CREATING EXCEPTIONAL



JFK MEDICAL PLAZA

4665 South Congress Avenue | Lake Worth, FL 33461



PROPERTY OVERVIEW

JFK Medical Plaza is a single-story, Class B medical office building ideally located on South Congress Avenue—just steps from HCA Florida JFK Hospital and nearby medical parks. The property offers excellent visibility, including prominent building signage opportunities along a major thoroughfare—perfect for promoting your practice.

Set in a thriving professional corridor, JFK Medical Plaza is conveniently located just 10 miles from Palm Beach International Airport and 20 minutes from the vibrant communities of Palm Beach and West Palm Beach.

KEY FEATURES

- Single-story medical office building
- Fully built-out 10,000 SF medical office suite available
- 50 surface parking spaces with private and direct entrance to the building
- Covered patient pick-up/drop-off area
- Prominent building signage opportunities on South Congress Avenue
- Close proximity to HCA Florida JFK Hospital and medical parks
- Access to John Prince Park, Lake Osborne, and area golf courses
- 24/7 maintenance request service
- Competitive lease packages with generous tenant improvement allowances

Contact Lillibridge to Learn More

Tyler Miller, Regional Leasing Director

tyler.miller@Lillibridge.com • 804.836.4473

