

T.P. 53 - 01 - 092  
NOW OR FORMERLY  
SBA TOWERS IX LLC  
INST.# 160004153  
P.B. 1 - PG. 59

60 PENNY NAIL FD. TOP OF 24" C/L PINE STUMP  
MARKED BY WITNESS PIPE FD. UP 2'

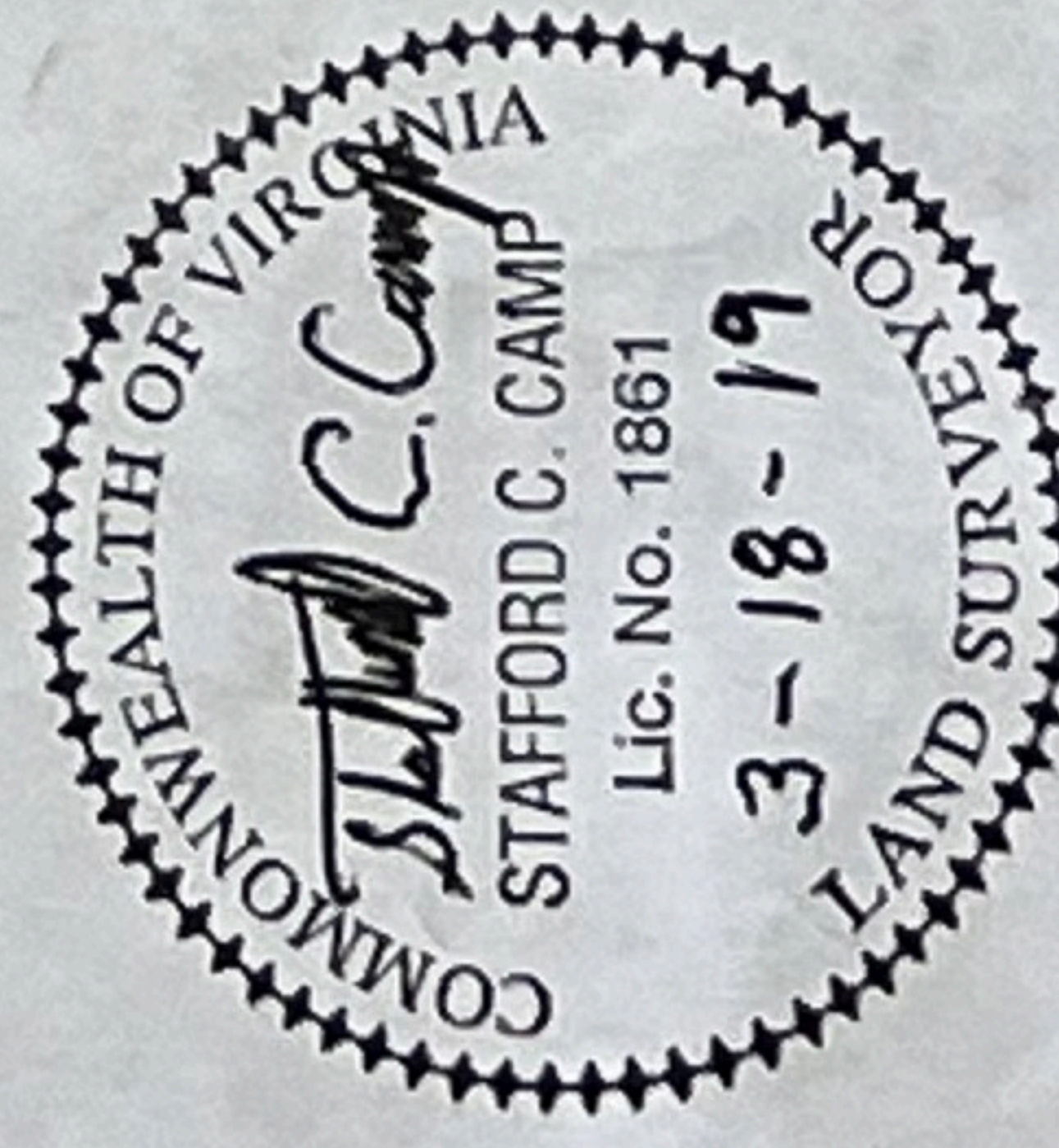
T.P. 53B-01-C001  
NOW OR FORMERLY  
STEVE COPELAND INC  
INST.# 180000253  
P.B. 3 - PG. 199

T.P. 53B-01-C021  
NOW OR FORMERLY  
BERTHA BANKS EATTON  
D.B. 41 - PG. 363

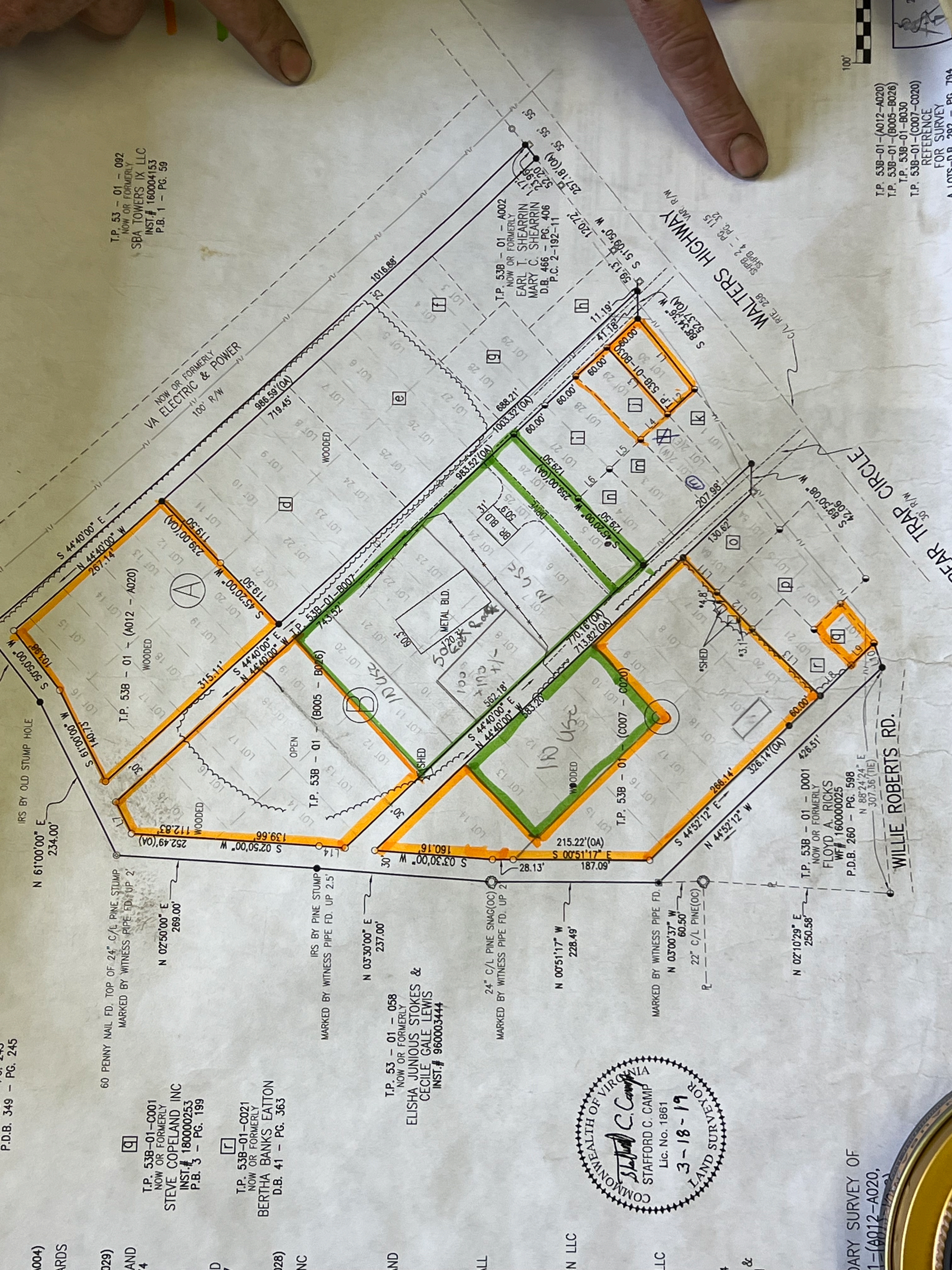
T.P. 53 - 01 - 058  
NOW OR FORMERLY  
ELISHA JUNIOUS STOKES &  
CECILE GALE LEWIS  
INST.# 960003444

24" C/L PINE SNAG(OC)  
MARKED BY WITNESS PIPE FD. UP 2'

N 00°51'17" W  
228.49'



ARY SURVEY OF  
1-(A012-A020,



NOW OR FORMERLY  
VA ELECTRIC & POWER  
100' R/W

T.P. 53B - 01 - A002  
NOW OR FORMERLY  
EARL T. SHEARRIN  
MARY C. SHEARRIN  
D.B. 466 - PG. 406  
P.C. 2-192-11

WALTERS HIGHWAY  
S 51°08'50" W  
1207.2'

T.P. 53B - 01 - D001  
NOW OR FORMERLY  
FLOYD A. RICKS  
WF# 160000025  
P.D.B. 260 - PG. 598  
N 88°24'24" E  
307.35'(TIE)

T.P. 53B-01-(A012-A020)  
T.P. 53B-01-(B005-B026)  
T.P. 53B-01-B030  
T.P. 53B-01-(C007-C020)  
REFERENCE  
FOR SURVEY  
A 105-D-B 202 - PG. 794