



SUITE 1620

2,054 SF

ASKING RATE

Please contact listing agents

ADDITIONAL RENT

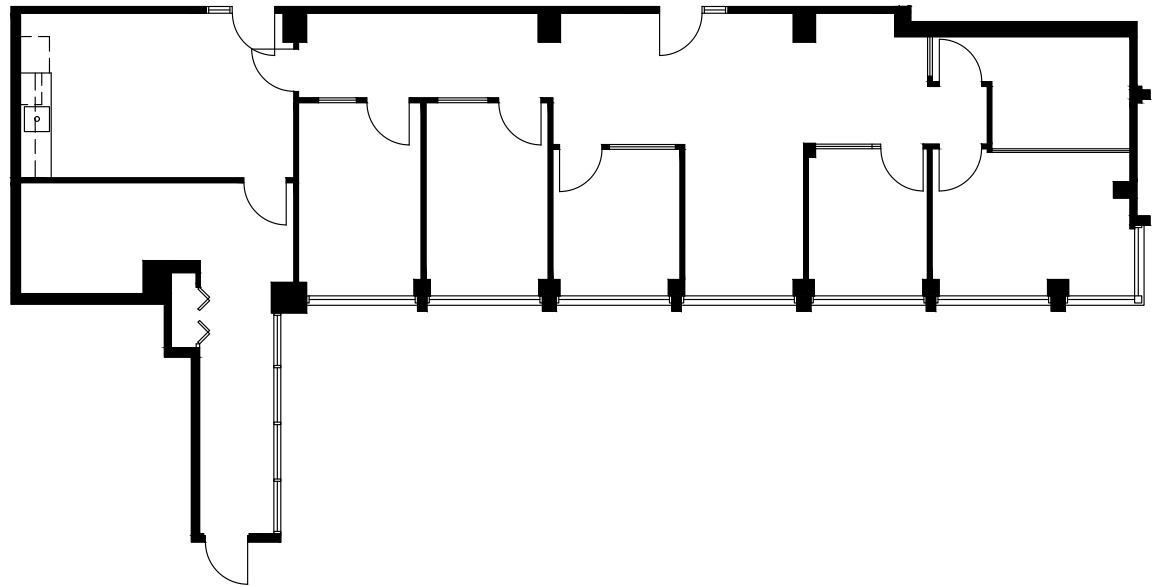
\$22.49 psf/pa (2026 estimate)

AVAILABILITY

Immediate

NOTES

4 offices, 2 meeting rooms, kitchen, and small open work area



MARK CHAMBERS*

Executive Vice President
604 998 6005

Mark.Chambers@jll.com

GRAHAM HYSLOP

Associate
604 354 7284

Graham.Hyslop@jll.com

*Personal Real Estate Corporation