

Office

CBRE

Laidley Tower

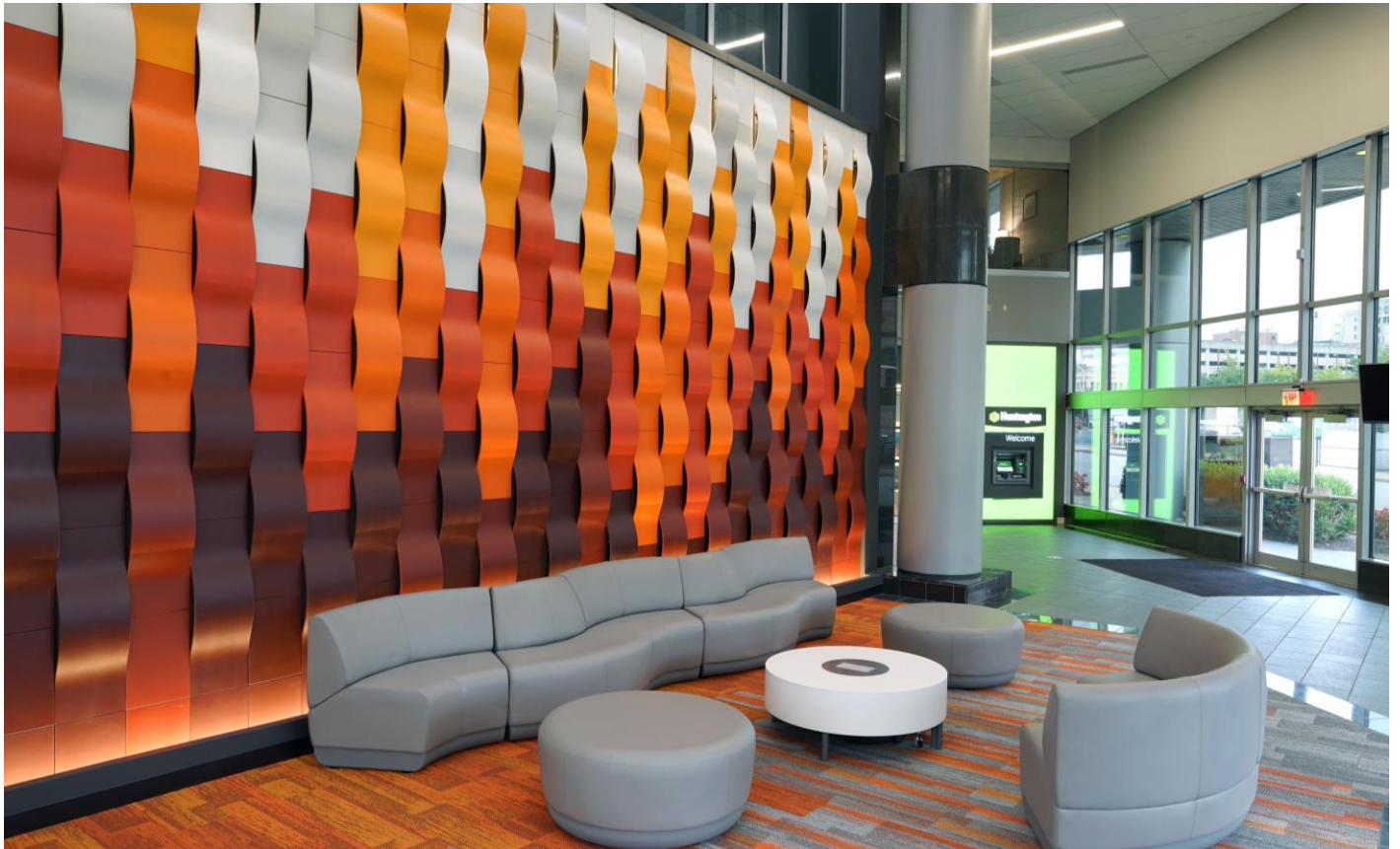
OFFICE SUITES AVAILABLE

500 Lee Street East
Charleston, WV 25301



Laidley Tower

500 Lee Street East, Charleston, WV 25301



Class A Office Space

Located in Charleston's CBD

Prestigious multiple tenancy high rise tower with banking facility on site. Amenities include an elegant atrium lobby, five high-speed elevators, 456 space parking facility with a skywalk entrance to the tower.

18

Stories of Class A Office Space

1984

Year Built

2007

Year Renovated

Class A Office Space Available

2nd Floor, Suite 202	5,151 SF
4 th Floor, Suite 400	9,047 SF
9 th Floor, Suite 905	3,145 SF
11 th Floor, suite 1130-B	555 SF
13 th Floor, Suite 1300	12,317 SF

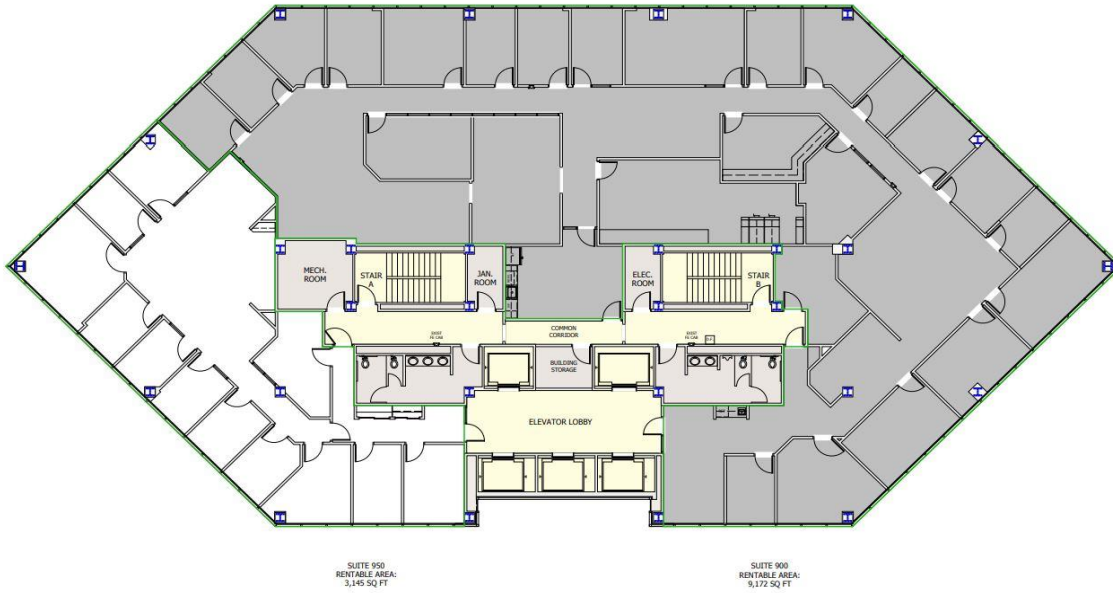


2021 Demographics

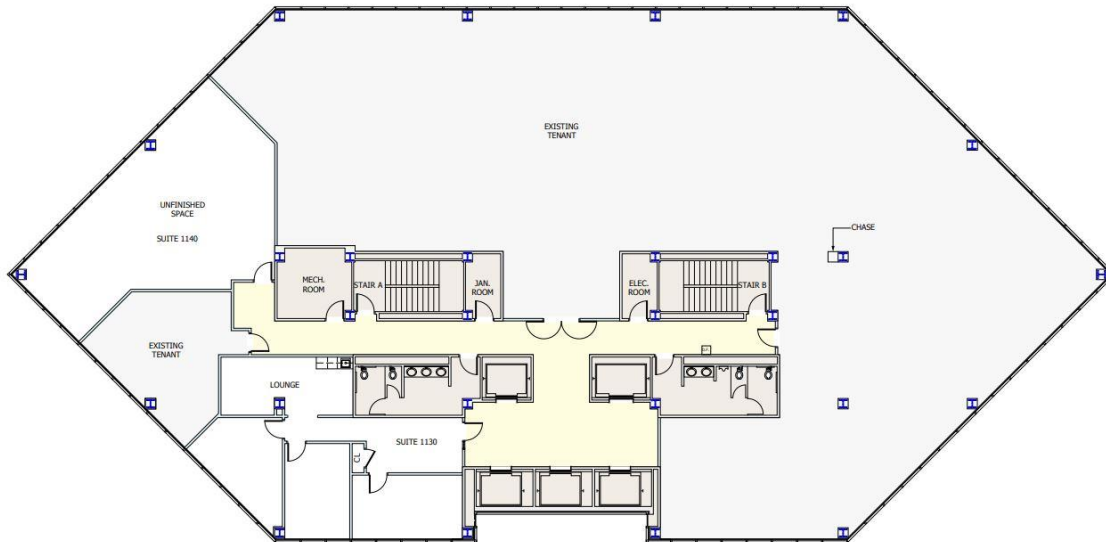
	One Mile	Three Miles	5 Miles
Population	6,634	43,923	64,011
Households	3,497	20,334	29,515
Avg. Household Income	\$54,146	\$71,659	\$82,509
Businesses	1,689	2,898	3,938

Laidley Tower

9th Floor-Suite 905 3,145 SF

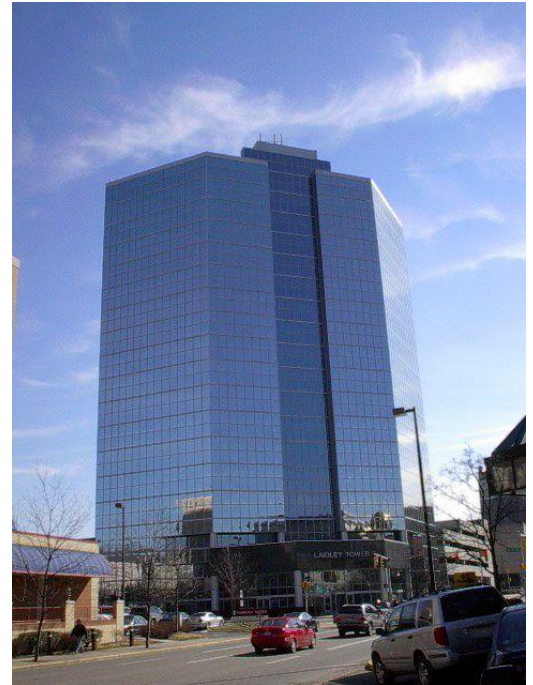
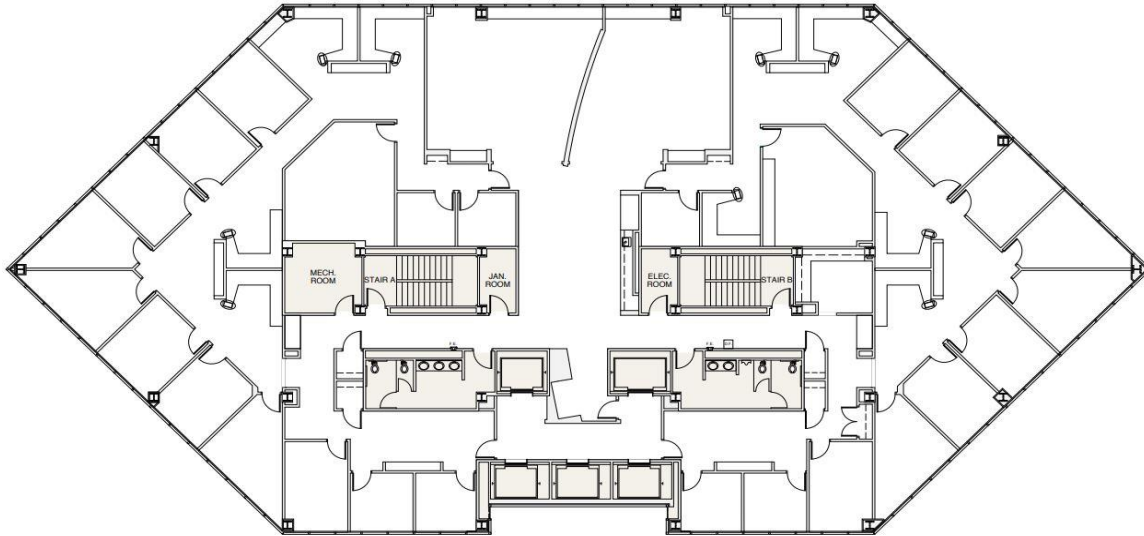


11th Floor- Suite 1130-B 555 SF



Laidley Tower

13th Floor-Suite 1300 12,317 SF



DeWitt Blundon
Senior Associate
+1 304 546 2581
dewitt.blundon@cbre.com

© 2021 CBRE, Inc. All rights reserved. This information has been obtained from sources believed reliable but has not been verified for accuracy or completeness. You should conduct a careful, independent investigation of the property and verify all information. Any reliance on this information is solely at your own risk.