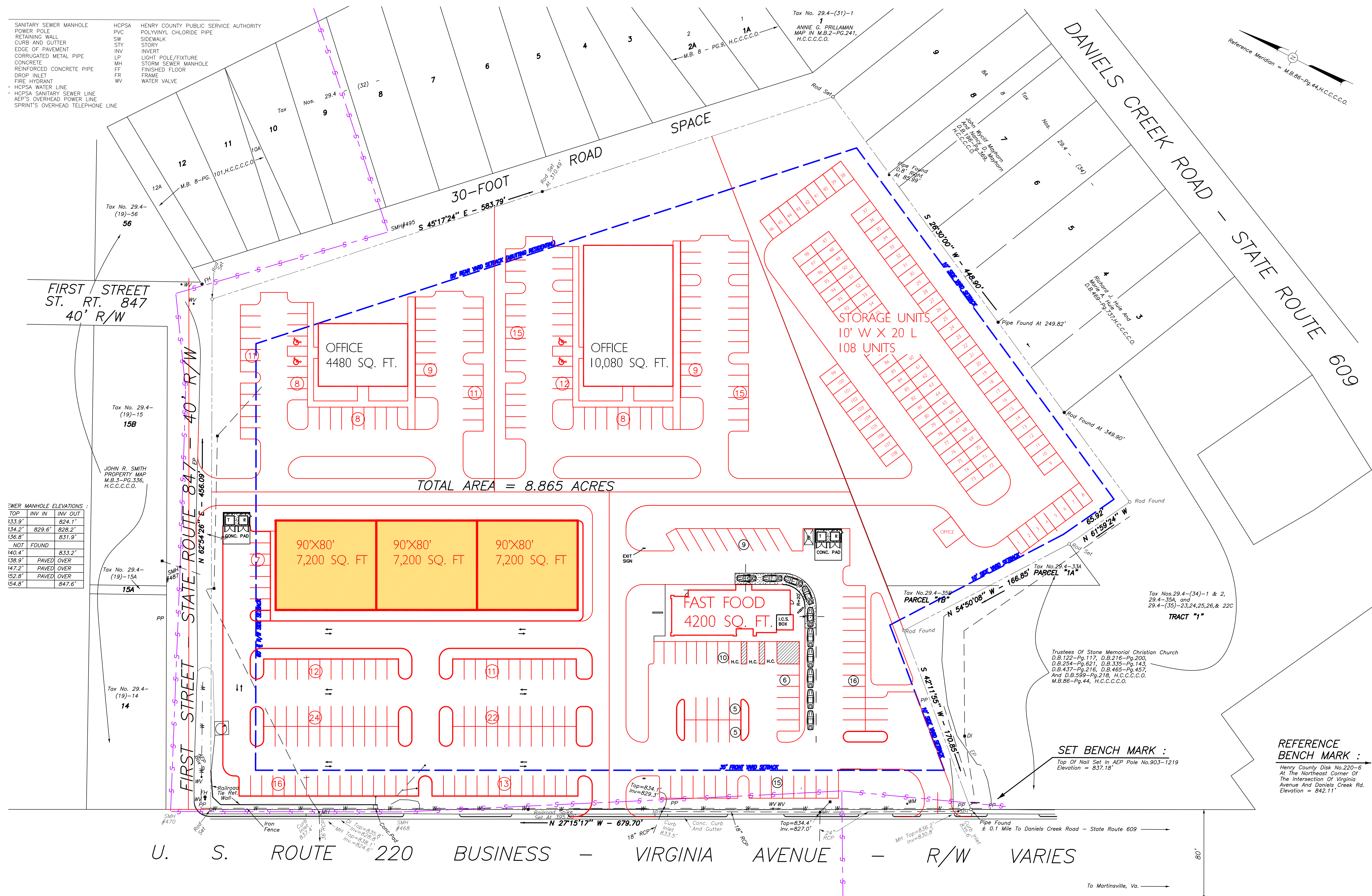


**COMMERCIAL DEVELOPMENT VIRGINIA AVENUE
 J & R MANAGEMENT, INC.
 ROUTE 220, BUSINESS, VIRGINIA AVENUE**

P-LAYOUT-3



SANITARY SEWER MANHOLE
 POWER POLE
 CURB AND GUTTER
 EDGE OF PAVEMENT
 CORRUGATED METAL PIPE
 CONCRETE
 REINFORCED CONCRETE PIPE
 DROP INLET
 FIRE HYDRANT
 HCPSA WATER LINE
 HCPSA SANITARY SEWER LINE
 AEP'S OVERHEAD POWER LINE
 SPRINT'S OVERHEAD TELEPHONE LINE

HCPSA
 PVC
 SW
 STY
 INV
 LP
 MH
 FF
 FR
 WV

HENRY COUNTY PUBLIC SERVICE AUTHORITY
 POLYVINYL CHLORIDE PIPE
 SIDEWALK
 STORY
 INVERT
 LIGHT POLE/FIXTURE
 STORM SEWER MANHOLE
 FINISHED FLOOR
 FRAME
 WATER VALVE

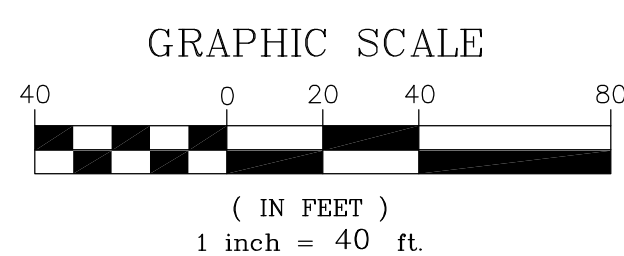
SEWER MANHOLE ELEVATIONS :

TOP	INV IN	INV OUT
133.9'	824.1'	
134.2'	829.6'	828.2'
136.8'		831.9'
NOT FOUND		831.9'
140.4'		833.2'
138.9'		PAVED OVER
147.2'		PAVED OVER
152.8'		PAVED OVER
154.8'		847.6'

NOTES:

This plat represents a current field survey by Piedmont Land Surveying, LLC.
 This survey has been prepared without the benefit of a title report and does not necessarily indicate all encumbrances on the property.
 This property is not located within a FEMA Flood Hazard Zone. It is located in Zone C.
 Henry County tax map designations - 29.4-27 28 29 30 31 32 33 and 35B

TAX NOS. 29.4 - 27, 28, 29, 30, 31, 32, 33, And 35B
CURRENT OWNER : Evelyn H. Stone, Marilyn Stone Vaughn, And Roy C. Stone, Jr., Co-Trustees Of The Evelyn H. Stone Trust
LEGAL REFERENCE : D.B. 793 - PG. 601, H.C.C.C.O.
TAX NO. 29.4 - 30A (Left Out Of Description In D.B.793-Pg.601)
CURRENT OWNER : Evelyn H. Stone
LEGAL REFERENCES : D.B. 408 - PG. 1, Parcel III, H.C.C.C.O.



NO.	DATE	DESCRIPTION	BY