



± 5,600 SF

◆ **FOR LEASE** ◆

ARTS DISTRICT



**CUSHMAN &  
WAKEFIELD**

GILL | BURNS | YOO



# HIGHLIGHTS



Refurbished Clear Span Building in the Arts District

---



Vintage Brick And Wooden Truss Roof System

---



Skylights Offering Excellent Natural Light

---



Open Floor Plan (No Columns)

---



Front and Rear Loading with Adjacent Parking

---



Highly Visible Location on a Major Street

---



Walking Distance To Great Amenities



# SPECIFICATIONS

BUILDING SIZE  
**±5,600 SF**

LAND SIZE  
**±5,663 SF**

YEAR BUILT  
**1923**

CLEAR HEIGHT  
**±12'**

LOADING  
**2 GL DOORS**

CONSTRUCTION TYPE  
**BRICK**

COLUMNS  
**NONE**

ZONING  
**M3-1**



GIRL & THE GOAT

# AMENITIES

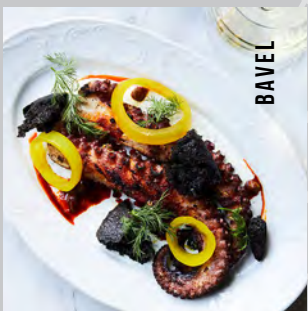
## arts district



SOHO HOUSE



CAFE DULCE



BAVEL

- COFFEE
- BAR
- RESTAURANTS
- MARKETS
- MUSEUMS
- STUDIOS



**BRANDON GILL** *Executive Director*

+1 213 629 6528

[brandon.gill@cushwake.com](mailto:brandon.gill@cushwake.com)

CA LIC 01262330

**BRANDON BURNS** *Executive Director*

+1 213 629 6541

[brandon.burns@cushwake.com](mailto:brandon.burns@cushwake.com)

CA LIC 01194796

**JAE YOO** *Executive Director*

+1 213 629 6551

[jae.yoo@cushwake.com](mailto:jae.yoo@cushwake.com)

CA LIC 01503567



©2026 Cushman & Wakefield. All rights reserved. The information contained in this communication is strictly confidential. This information has been obtained from sources believed to be reliable but has not been verified. NO WARRANTY OR REPRESENTATION, EXPRESS OR IMPLIED, IS MADE AS TO THE CONDITION OF THE PROPERTY (OR PROPERTIES) REFERENCED HEREIN OR AS TO THE ACCURACY OR COMPLETENESS OF THE INFORMATION CONTAINED HEREIN, AND SAME IS SUBMITTED SUBJECT TO ERRORS, OMISSIONS, CHANGE OF PRICE, RENTAL OR OTHER CONDITIONS, WITHDRAWAL WITHOUT NOTICE, AND TO ANY SPECIAL LISTING CONDITIONS IMPOSED BY THE PROPERTY OWNER(S). ANY PROJECTIONS, OPINIONS OR ESTIMATES ARE SUBJECT TO UNCERTAINTY AND DO NOT SIGNIFY CURRENT OR FUTURE PROPERTY PERFORMANCE.