

PROPERTY DETAILS

- Unit 645: +/- 20,934 SF
- Office: +/- 3,700 SF
- Mezzanine: +/- 4,222 SF (Included in total SF)
- 3 Dock High Doors
- 1 Grade Level Door
- Clear Height: 24 feet
- Electrical Capacity: 3-Phase
- Zoning: B-3 City of Fort Lauderdale
- Strategically located just east of I-95, off Sunrise Blvd., with immediate proximity to Downtown/CBD - Fort Lauderdale, affluent housing base, and Flagler Village. Minutes to Fort Lauderdale/Hollywood International Airport (FLL) and Brightline train station.

ABOUT PROPERTY



PRICE

\$17 NNN + \$5.92 CAM



YEAR BUILT

1986



AVAILABLE SF

7,013 - 41,823 SF



PARKING

1.41/1,000 SF



LOCATION

Fort Lauderdale, FL

For more information:

Keith R. Graves, CCIM, SIOR

954.652.2031 | Kgraves@Bergercommercial.Com
bergercommercial.com

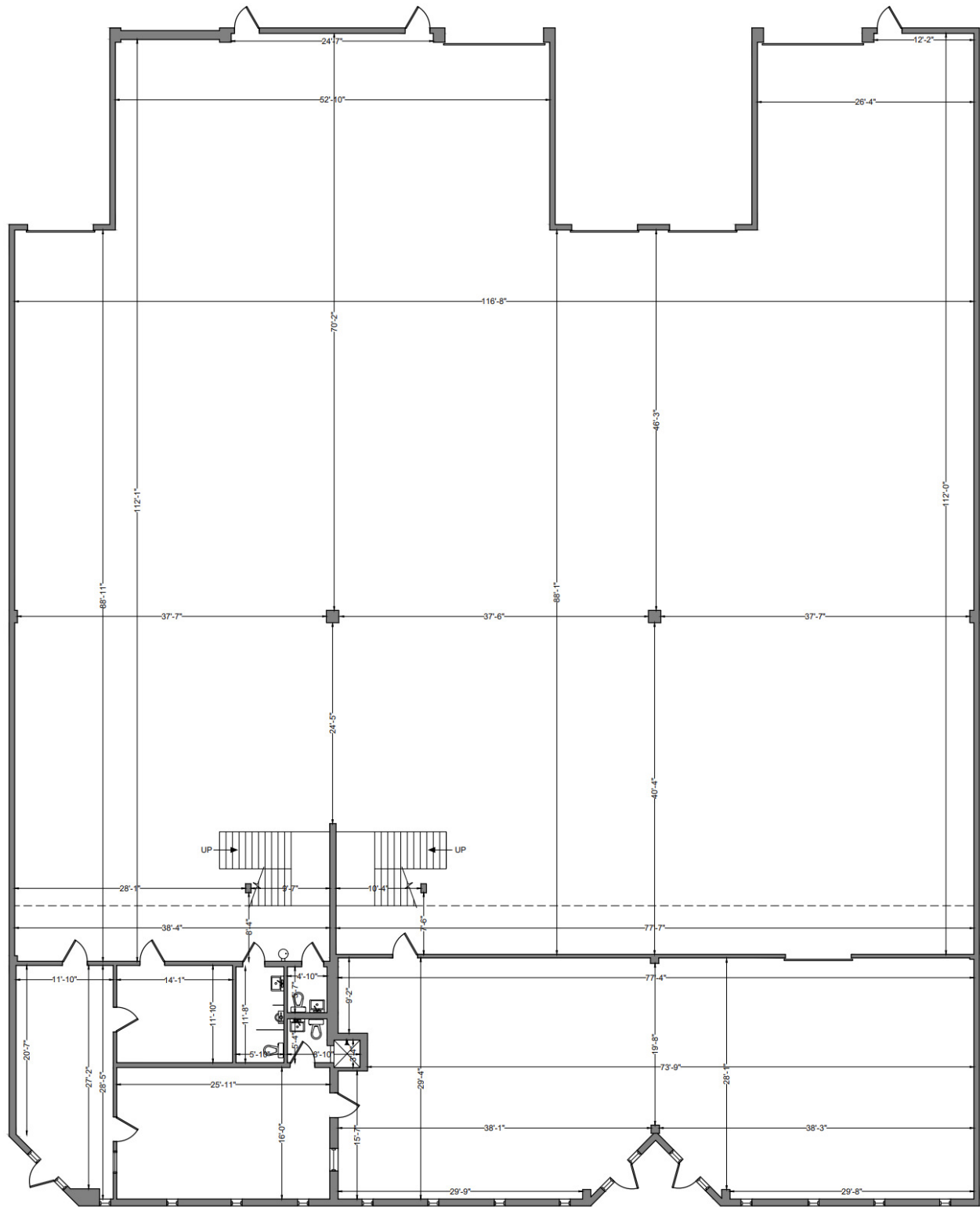
Daniel Forman

954.652.2004 | Dforman@Bergercommercial.Com

Jonathan Thiel

954.652.2020 | Jthiel@Bergercommercial.Com





For more information:

Keith R. Graves, CCIM, SIOR

954.652.2031 | Kgraves@Bergercommercial.Com

bergercommercial.com

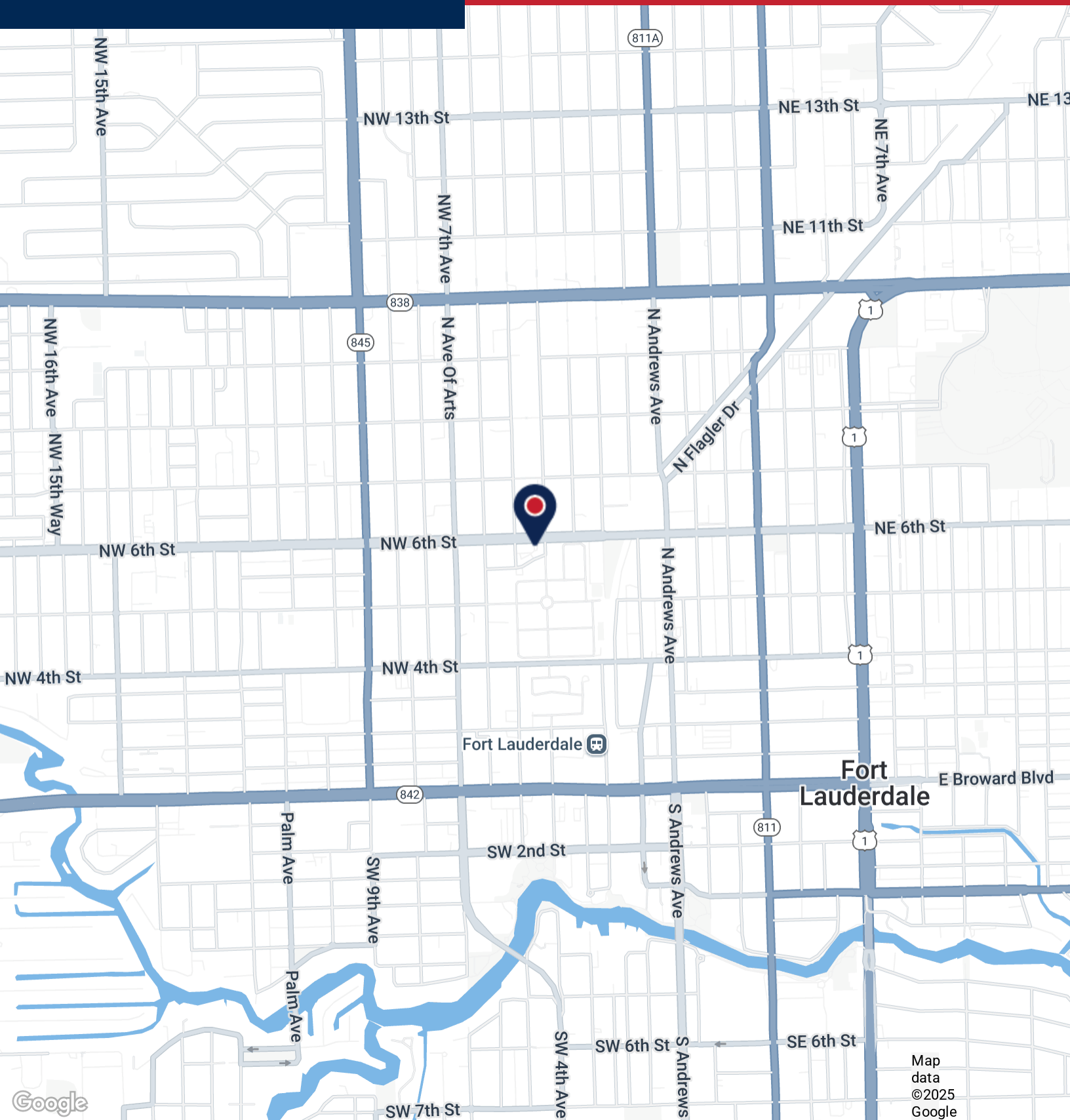
Daniel Forman

954.652.2004 | Dforman@Bergercommercial.Com

Jonathan Thiel

954.652.2020 | Jthiel@Bergercommercial.Com





For more information:

Keith R. Graves, CCIM, SIOR

954.652.2031 | Kgraves@Bergercommercial.Com

bergercommercial.com

Daniel Forman

954.652.2004 | Dforman@Bergercommercial.Com

Jonathan Thiel

954.652.2020 | Jthiel@Bergercommercial.Com

Lawrence BERGER
 COMMERCIAL REALTY
 954.652.2017 | Loxenberg@Bergercommercial.Com
 INTERNATIONAL
 COMMERCIAL BROKERAGE AND PROPERTY MANAGEMENT