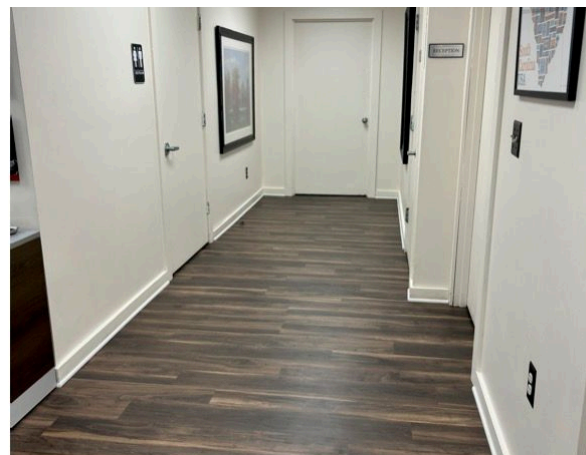


# Medical Office Space

31 Memorial Medical Drive, Greenville SC 29605

# For Lease



Brand new LVP floors invite your patients and staff into a clean and comfortable space. Landlord is happy for you to make this space fit your own style.

Bring your staff and practice to this cozy, wooded property, easily accessible to your patients and near downtown Greenville and Prisma Health..

- 2,133 SF
- Large reception area
- 10 private offices
- small lab room
- 2 accessible bathrooms
- 4 minutes to Prisma Health Greenville Memorial
- Easy Access to Downtown Greenville
- Plenty of Parking
- \$3650/month MG
- All included except landscape & janitorial
- [PDF FLYER & More Photos](#)



**BERKSHIRE  
HATHAWAY**  
HOMESERVICES

C. DAN JOYNER,  
REALTORS®  
COMMERCIAL