



FOR SALE OR LEASE

Industrial Manufacturing Building For Sale or Lease

2323 N. ROEMER ROAD
APPLETON, WISCONSIN

Building Size

±58,885 SF

Parcel Size

±6.52 Acres

Taxes (2025)

\$33,748.03

Lease Rate

Negotiable – Subject to Lease Terms

Sale Price

Negotiable - Contact Broker

Property Highlights

- Hard to find property that offers outside storage and flexible lease options.
- Potential to increase clear height to 26'
- Centrally located in Appleton within one (1) mile of Highway 441
- Heavy power with bridge cranes
- Multiple drive-in doors
- Two (2) 3-Ton bridge cranes

For information, please contact:

Travis Tiede, SIOR

Senior Managing Director

t 414-395-4682

travis.tiede@nmrk.com

Patrick Hanrahan

Director

t 414-908-9159

patrick.hanrahan@nmrk.com

Adam Matson, SIOR

Senior Managing Director

t 414-395-4686

adam.matson@nmrk.com

757 N Broadway, Suite 700

Milwaukee, WI 53202



nmrk.com

NEWMARK

The information contained herein has been obtained from sources deemed reliable but has not been verified and no guarantee, warranty or representation, either express or implied, is made with respect to such information. Terms of sale or lease and availability are subject to change or withdrawal without notice.

2323 N. ROEMER ROAD, APPLETON, WI

BUILDING FEATURES

Construction

Masonry & Metal

Year Built

1988

Sprinkler

100% Wet System

Zoning

M-1 Industrial Park District

Utilities

Municipal Sewer & Water

WAREHOUSE FEATURES

Size

±31,200 SF

Ceiling Height

±13' – 19'

Dock Doors

One (1) Exterior

Drive-Ins

Four (4) – 12'x12'

One (1) – 22'x15'

HVAC

Gas Fired Unit Heaters

Lighting

LED

Power

3-Phase, 480V, 1200 Amps

Column Spacing

30'x40'

OFFICE FEATURES

Size

±10,585 SF

SHOP BUILDING FEATURES

Size

±17,100 SF

Ceiling Height

±13' – 19'

Drive-Ins

Seven (7) – 10'x12'

One (1) – 17'x13'

HVAC

Gas Fired Unit Heaters

Lighting

LED

Power

3-Phase, 208V, 400 Amp

Column Spacing

Clear Span



2323 N. ROEMER ROAD, APPLETON, WI



CONTACT

Travis Tiede, SIOR

Senior Managing Director

t 414-395-4682

travis.tiede@nmrk.com

nmrk.com

Patrick Hanrahan

Director

t 414-908-9159

patrick.hanrahan@nmrk.com

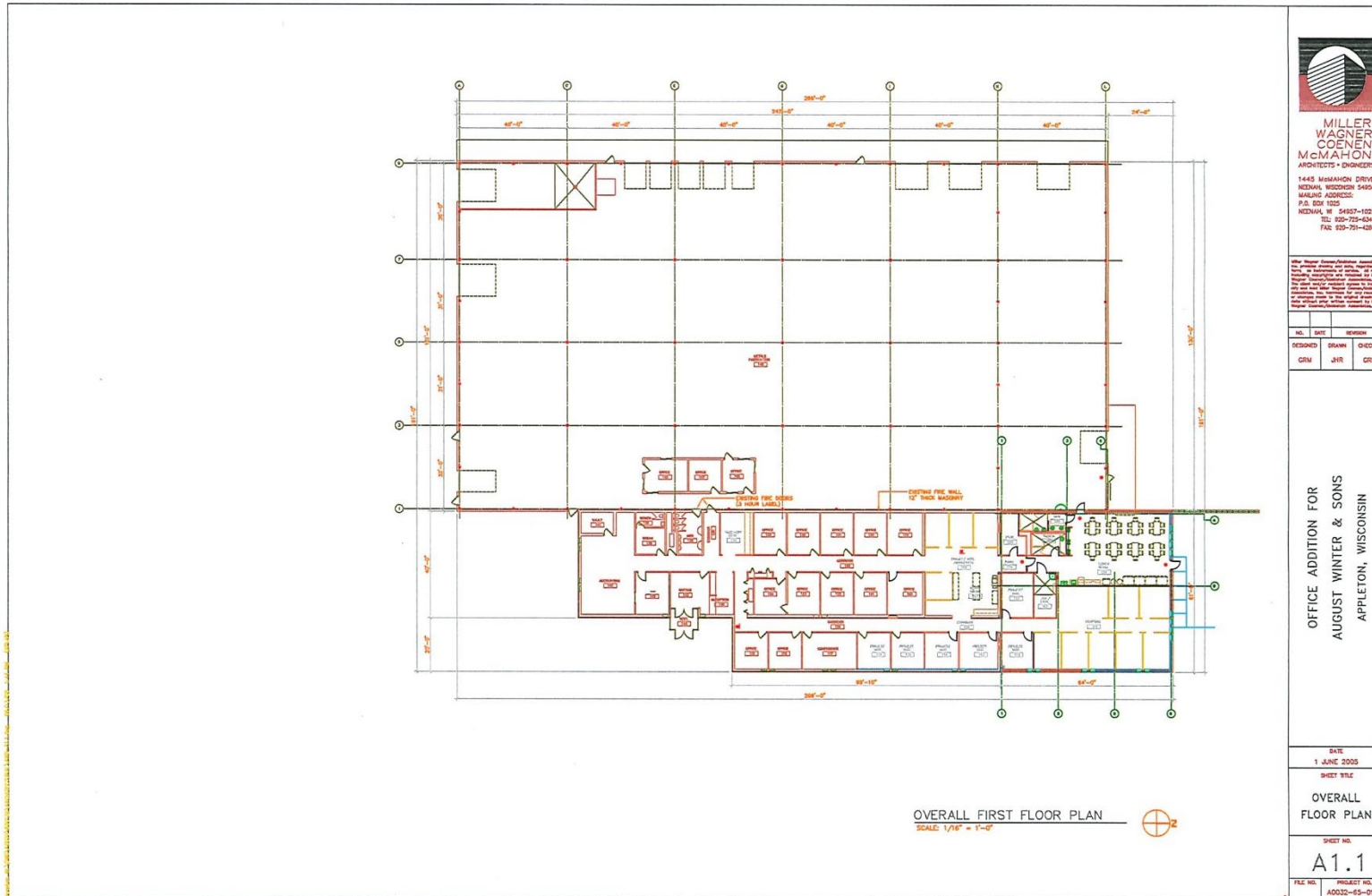
Adam Matson, SIOR

Senior Managing Director

t 414-395-4686

adam.matson@nmrk.com

NEWMARK



**MILLER
WAGNER
COENEN
McMAHON**
ARCHITECTS + ENGINEERS
1445 McMAHON DRIVE
MESHAW, WISCONSIN 54950
MAILING ADDRESS:
P.O. BOX 1025
MESHAW, WI 54957-1025
TEL: 920-725-6346
FAX: 920-721-6284

This document is the property of Miller Wagner Coenen McMahon Architects + Engineers. It is to be used only for the project and site identified herein. It is not to be reproduced, copied, or distributed in any form without the written consent of Miller Wagner Coenen McMahon Architects + Engineers. The user of this document assumes all liability for any errors or omissions. Miller Wagner Coenen McMahon Architects + Engineers is not responsible for any damages, including consequential damages, arising from the use of this document.

NO.	DATE	REVISION
DESIGNED	BY:AW	CHECKED
DATE	DATE	DATE

OFFICE ADDITION FOR
AUGUST WINTER & SONS
APPLETON, WISCONSIN

DATE
1 JUNE 2005

SHEET TITLE

OVERALL
FLOOR PLAN

SHEET NO.

A1.1

FILE NO. PROJECT NO.
A0032-65-0129

CONTACT

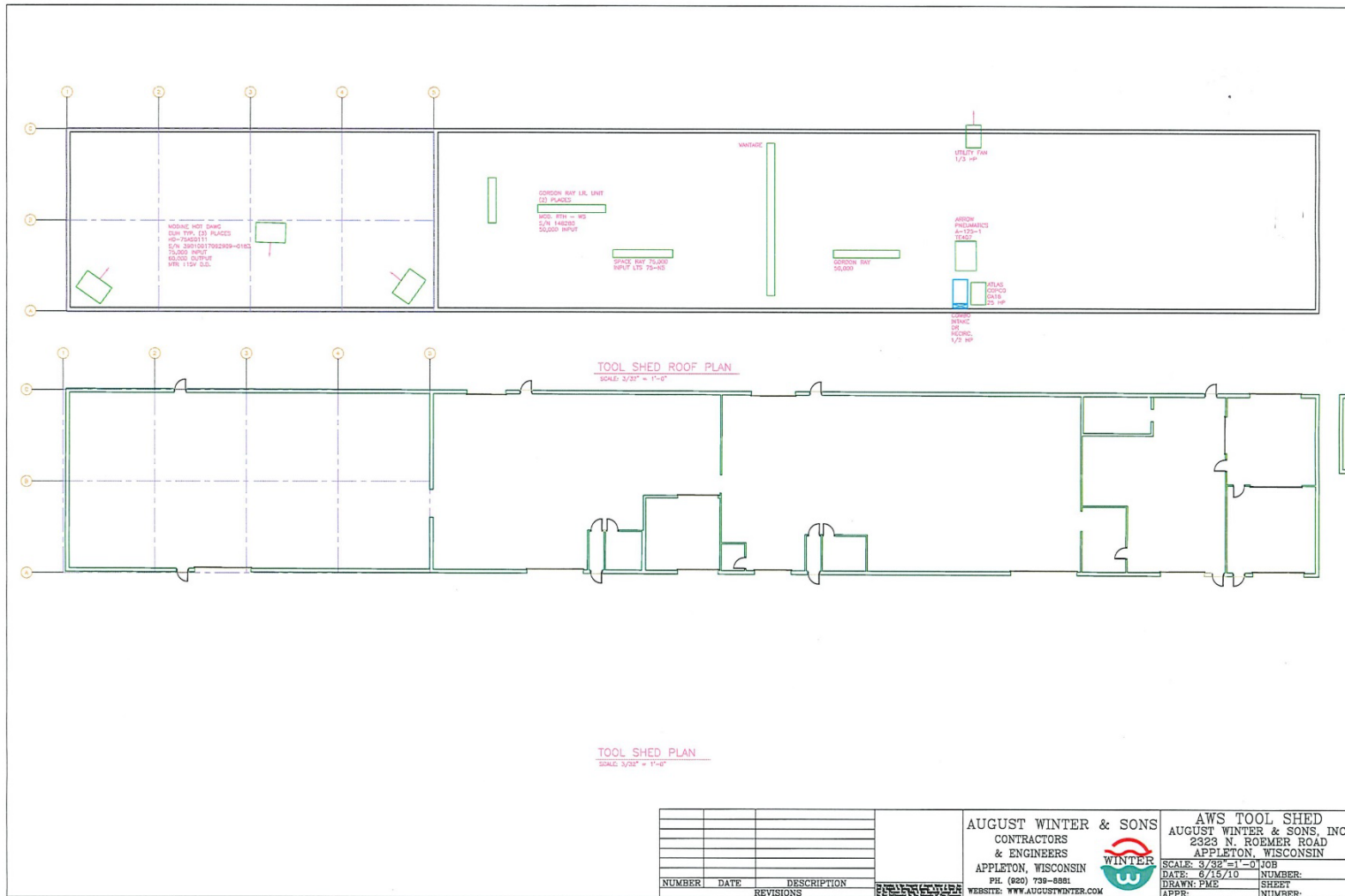
Travis Tiede, SIOR
Senior Managing Director
t 414-395-4682
travis.tiede@nmrk.com
nmrk.com

Patrick Hanrahan
Director
t 414-908-9159
patrick.hanrahan@nmrk.com

Adam Matson, SIOR
Senior Managing Director
t 414-395-4686
adam.matson@nmrk.com



2323 N. ROEMER ROAD, APPLETON, WI



CONTACT

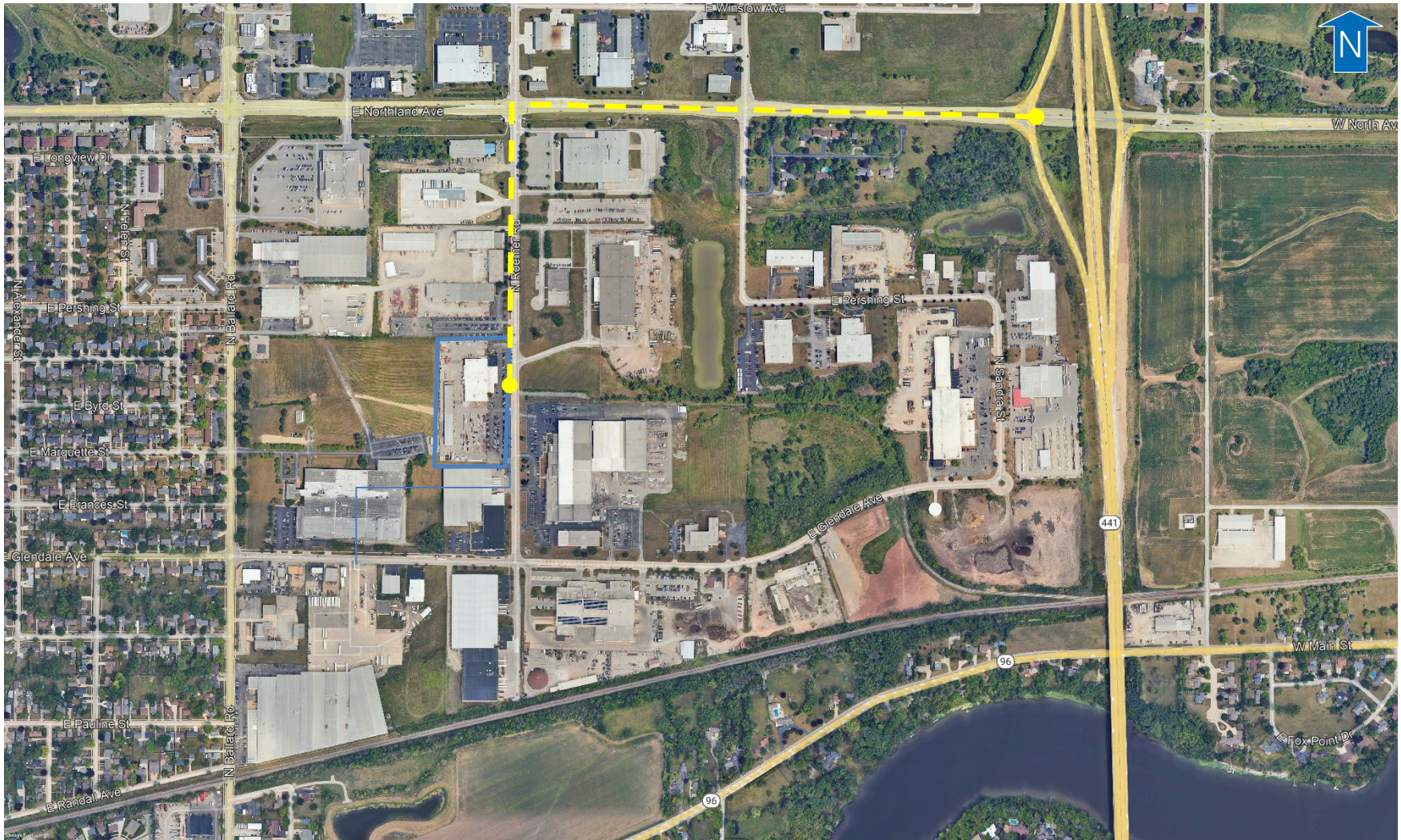
Travis Tiede, SIOR
 Senior Managing Director
 t 414-395-4682
 travis.tiede@nmrk.com
 nmrk.com

Patrick Hanrahan
 Director
 t 414-908-9159
 patrick.hanrahan@nmrk.com

Adam Matson, SIOR
 Senior Managing Director
 t 414-395-4686
 adam.matson@nmrk.com



2323 N. ROEMER ROAD, APPLETON, WI



CONTACT

Travis Tiede, SIOR
Senior Managing Director
t 414-395-4682
travis.tiede@nmrk.com
nmrk.com

Patrick Hanrahan
Director
t 414-908-9159
patrick.hanrahan@nmrk.com

Adam Matson, SIOR
Senior Managing Director
t 414-395-4686
adam.matson@nmrk.com



STATE OF WISCONSIN BROKER DISCLOSURE TO NON-RESIDENTIAL CUSTOMERS

Wisconsin law requires all real estate licensees to give the following information about brokerage services to prospective customers.

Prior to negotiating on your behalf the brokerage firm, or an agent associated with the firm, must provide you the following disclosure statement.

DISCLOSURE TO CUSTOMERS

You are a customer of the brokerage firm (hereinafter Firm). The Firm is either an agent of another party in the transaction or a subagent of another firm that is the agent of another party in the transaction. A broker or a salesperson acting on behalf of the Firm may provide brokerage services to you. Whenever the Firm is providing brokerage services to you, the Firm and its brokers and salespersons (hereinafter Agents) owe you, the customer, the following duties:

- The duty to provide brokerage services to you fairly and honestly.
- The duty to exercise reasonable skill and care in providing brokerage services to you.
- The duty to provide you with accurate information about market conditions within a reasonable time if you request it, unless disclosure of the information is prohibited by law.
- The duty to disclose to you in writing certain Material Adverse Facts about a property, unless disclosure of the information is prohibited by law (see "Definition of Material Adverse Facts" below).
- The duty to protect your confidentiality. Unless the law requires it, the Firm and its Agents will not disclose your confidential information or the confidential information of other parties (see "Confidentiality Notice To Customers" below).
- The duty to safeguard trust funds and other property held by the Firm or its Agents.
- The duty, when negotiating, to present contract proposals in an objective and unbiased manner and disclose the advantages and disadvantages of the proposals.

Please review this information carefully. An agent of the Firm can answer your questions about brokerage services, but if you need legal advice, tax advice, or a professional property inspection, contact an attorney, tax advisor, or property inspector.

This disclosure is required by section 452.135 of the Wisconsin statutes and is for information only. It is a plain-language summary of the duties owed to a customer under section 452.133(1) of the Wisconsin statutes.

CONFIDENTIALITY NOTICE TO CUSTOMERS

The Firm and its Agents will keep confidential any information given to the Firm or its Agents in confidence, or any information obtained by the Firm or its Agents that a reasonable person would want to be kept confidential, unless the information must be disclosed by law or you authorize the Firm to disclose particular information. The Firm and its Agents shall continue to keep the information confidential after the Firm is no longer providing brokerage services to you.

The following information is required to be disclosed by law:

1. Material Adverse Facts, as defined in Wis. Stat. §452.01 (5g) (see "definition of material adverse facts" below).
2. Any facts known by the Firm or its Agents that contradict any information included in a written inspection report on the property or real estate that is the subject of the transaction.

To ensure that the Firm and its Agents are aware of what specific information you consider confidential, you may list that information below or provide that information to the Firm or its Agents by other means. At a later time, you may also provide the Firm or its Agents with other information you consider to be confidential.

CONFIDENTIAL INFORMATION: _____

NON-CONFIDENTIAL INFORMATION (The following information may be disclosed by the Firm and its Agents): _____

DEFINITION OF MATERIAL ADVERSE FACTS

A "Material Adverse Fact" is defined in Wis. Stat. §452.01 (5g) as an Adverse Fact that a party indicates is of such significance, or that is generally recognized by a competent licensee as being of such significance to a reasonable party, that it affects or would affect the party's decision to enter into a contract or agreement concerning a transaction or affects or would affect the party's decision about the terms of such a contract or agreement.

An "Adverse Fact" is defined in Wis. Stat. §452.01 (1e) as a condition or occurrence that a competent licensee generally recognizes will significantly and adversely affect the value of the property, significantly reduce the structural integrity of improvements to real estate, or present a significant health risk to occupants of the property; or information that indicates that a party to a transaction is not able to or does not intend to meet his or her obligations under a contract or agreement made concerning the transaction.

SEX OFFENDER REGISTRY

Notice: You may obtain information about the sex offender registry and persons registered with the registry by contacting the Wisconsin Department of Corrections on the Internet at <http://www.doc.wi.gov/> or by phone at 608-240-5830.

No representation is made as to the legal validity of any provision or the adequacy of any provision in any specific transaction.