

401 | 10TH STREET

Berthoud, Colorado 80513

FOR SALE

Basement: 1,615 SF | 1st Floor: 3,216 SF



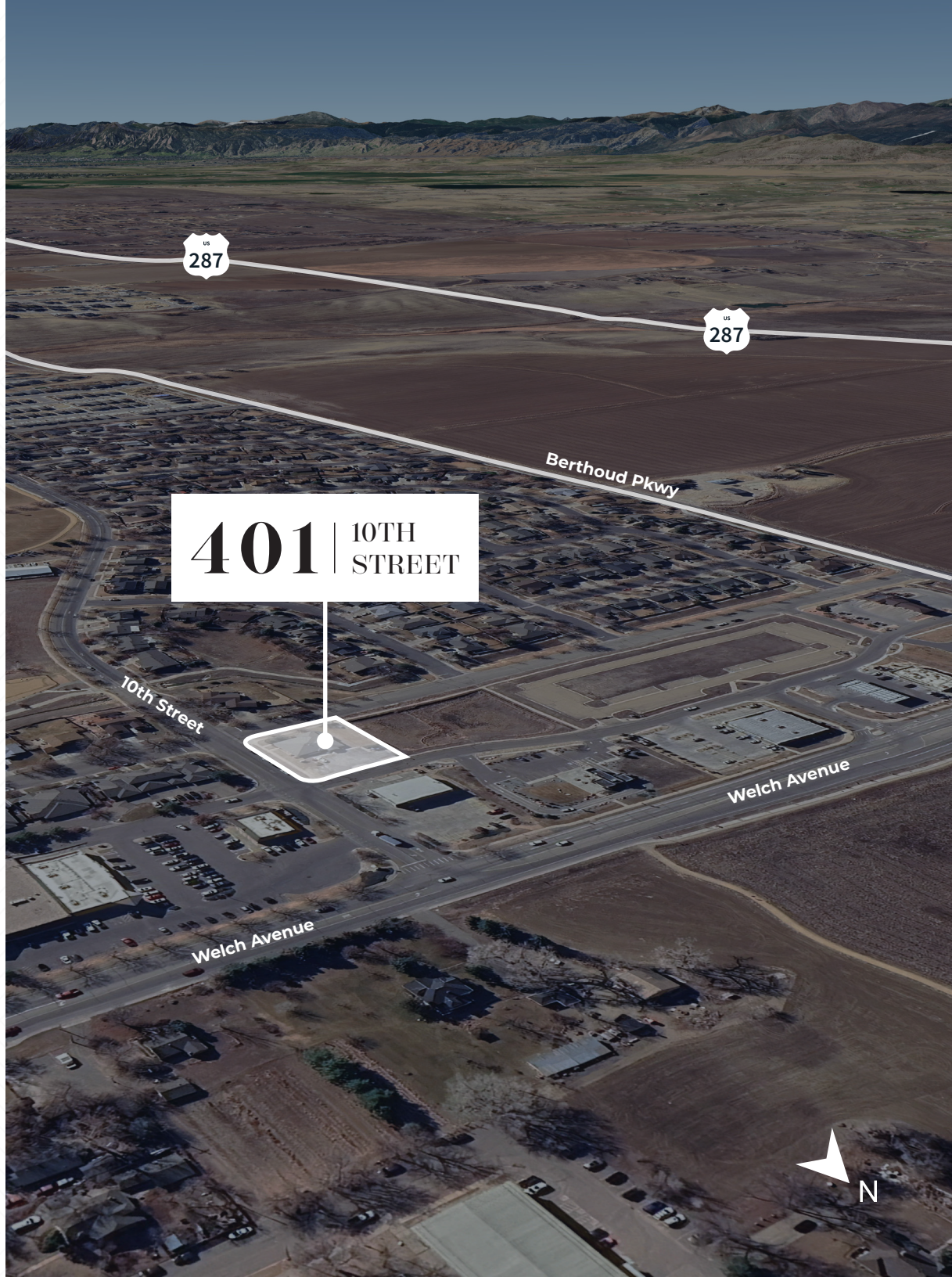
PROPERTY HIGHLIGHTS

Situated in downtown Berthoud, the property is approximately 10-12 miles south of Loveland with convenient access to US-287 and I-25. Major medical facilities are within a 20-25 minute drive.

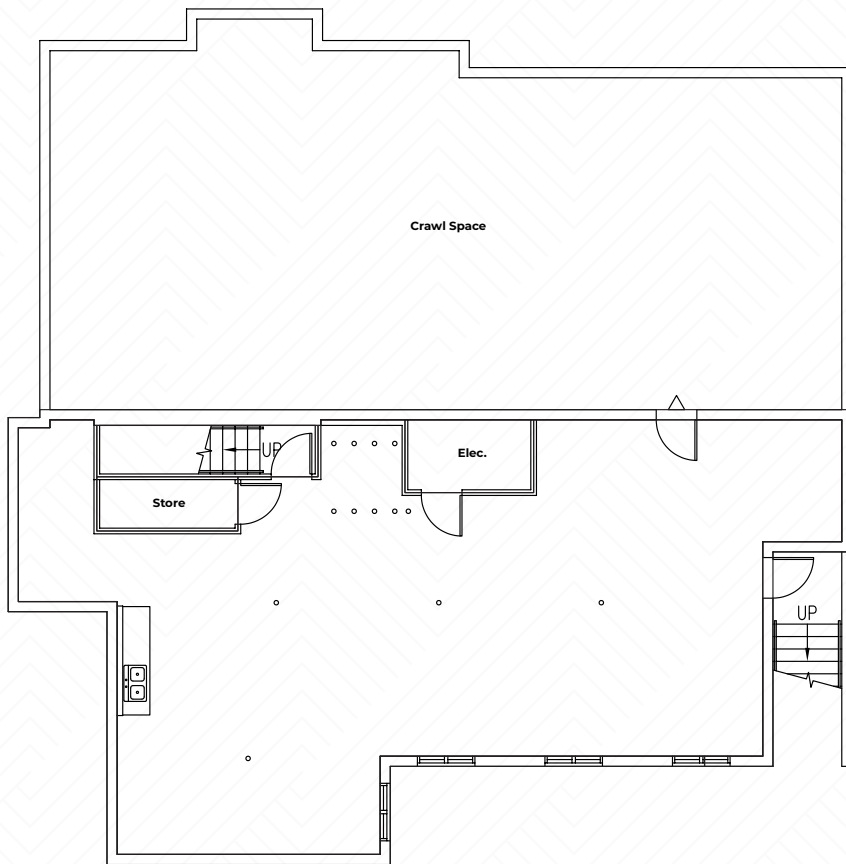
Basement: 1,615 SF | **1st Floor:** 3,216 SF



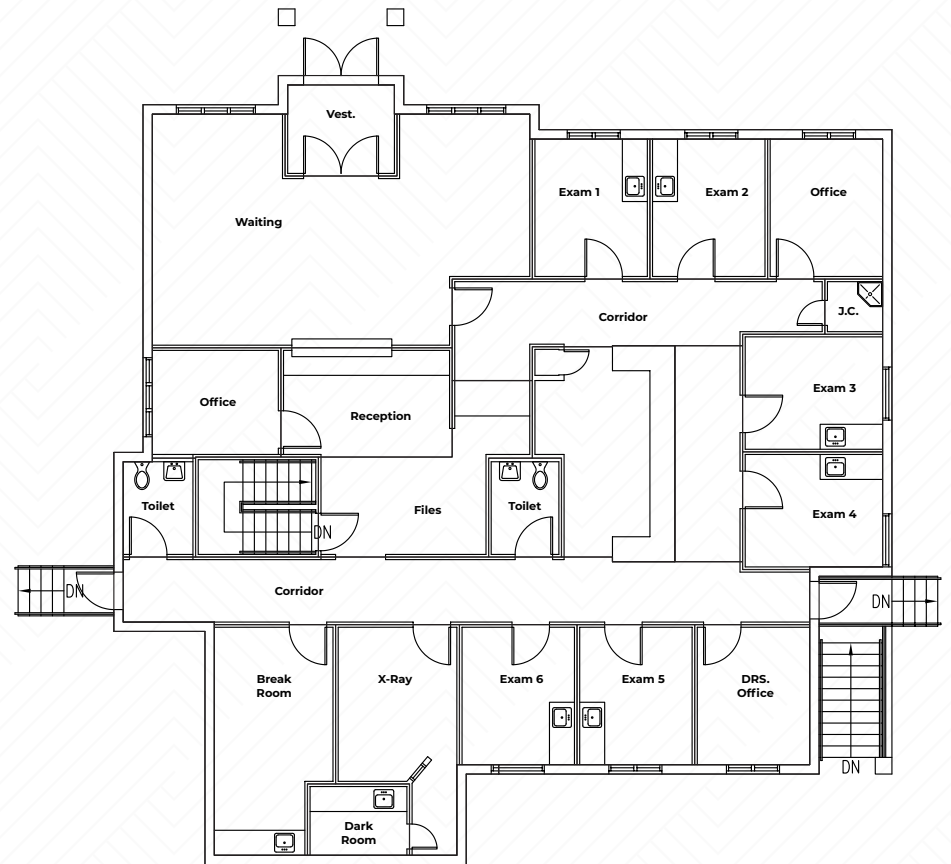
Price: Undisclosed



FLOOR PLANS



Basement | 1,615 SF



1st Floor | 3,216 SF



For more information, please contact:

Abby Waner Bartolotta
+1 303 242 4839
Abby.Bartolotta@jll.com



Although information has been obtained from sources deemed reliable, JLL does not make any guarantees, warranties or representations, express or implied, as to the completeness or accuracy as to the information contained herein. Any projections, opinions, assumptions or estimates used are for example only. There may be differences between projected and actual results, and those differences may be material. JLL does not accept any liability for any loss or damage suffered by any party resulting from reliance on this information. If the recipient of this information has signed a confidentiality agreement with JLL regarding this matter, this information is subject to the terms of that agreement. ©2026 Jones Lang LaSalle Brokerage, Inc. All rights reserved.