

FOR LEASE

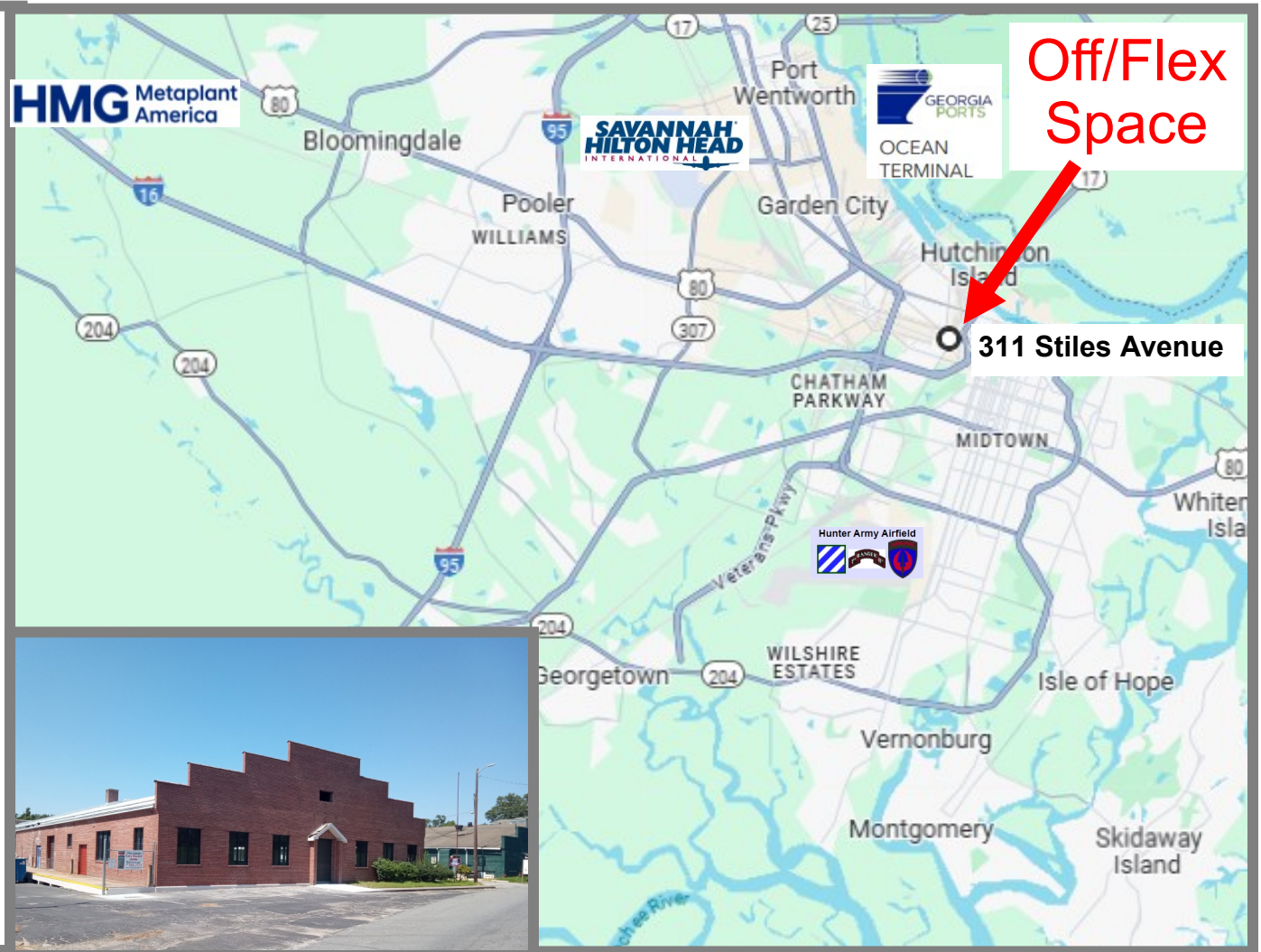
**311 Stiles Avenue,
Savannah, Georgia 31415**

Flex Warehouse Space

Distances:

Enmark Arena 0.5 Mile
Downtown Sav 1.7 Mile
Ocean Terminal 1.2 Miles
Airport 10.0 Miles
Interstate 95 13.8 Miles
Interstate 16/516 2.6 Miles
Hyundai Plant 25.5 Miles

Call: Gary Mankin, **CCIM**,
Re/Max Savannah
(p) +1 912 355 7711
(p) +1 912 650 2720
(m) +1 404 590 3076
gwmankin@gmail.com



This Information is provided for advertising and general information purposes only and is subject to errors, omissions, prior sales/leases and withdrawal without notice. NO REPRESENTATION OR WARRANTY IS GIVEN, EXPRESS OR IMPLIED, AS TO THE ACCURACY OF THE INFORMATION contained herein. You assume without limitation all risk, all liability for loss and damages resulting from reliance on this information. **Tenant/Buyer has the responsibility to verify all information contained herein.**

FOR LEASE

311 Stiles Avenue, Savannah, Georgia 31415
Office/Flex Warehouse Space



**Approximately 9816 1st Floor (80'x122') &
Potential for 8,000 RSF on the 2nd Floor;
11' Interior Clear Height, Zoned I-L (Light Industrial);
Loading Dock; Possible Small Yard;
Rental Rate \$12.00 RSF; NNN Expenses Estimated at \$2.00 -\$3.00 RSF
Tenant Improvements Negotiable.**



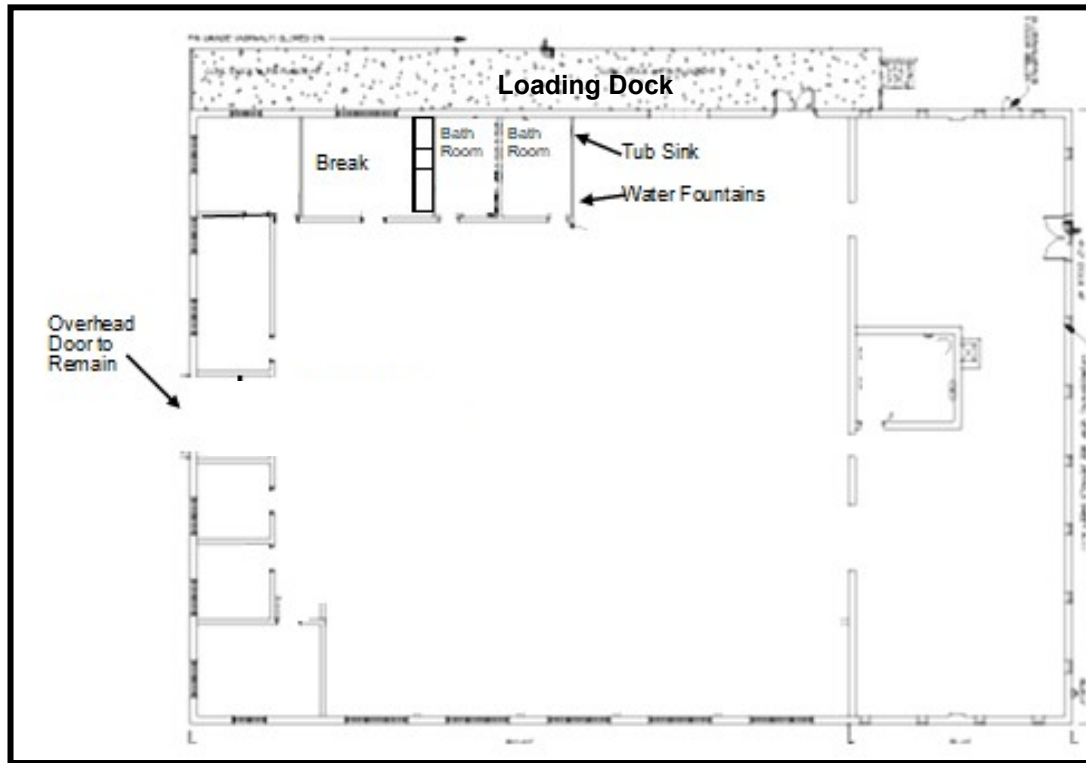
Call: Gary Mankin, CCIM, Re/Max Savannah
(p) +1 912 355 7711 (p) +1 912 650 2720 (m) +1 404 590 3076
gwmankin@gmail.com



This Information is provided for advertising and general information purposes only and is subject to errors, omissions, prior sales/leases and withdrawal without notice. NO REPRESENTATION OR WARRANTY IS GIVEN, EXPRESS OR IMPLIED, AS TO THE ACCURACY OF THE INFORMATION contained herein. You assume without limitation all risk, all liability for loss and damages resulting from reliance on this information. **Tenant/Buyer has the responsibility to verify all information contained herein.**

FOR LEASE

311 Stiles Avenue, Savannah, Georgia 31415 Office/Flex Warehouse Space



Approximately 9816 1st Floor (80'x122') &
Potential for 8,000 RSF on the 2nd Floor; 11' Interior Clear Height, Zoned I-L
(Light Industrial); Loading Dock; Possible Small Yard;
\$12.00 RSF NNN Expenses Estimated at \$2.00 - \$3.00 RSF;
Tenant Improvements Negotiable.



Call: Gary Mankin, **CCIM**, Re/Max Savannah
(p) +1 912 355 7711 (p) +1 912 650 2720 (m) +1 404 590 3076
gwmankin@gmail.com



This Information is provided for advertising and general information purposes only and is subject to errors, omissions, prior sales/leases and withdrawal without notice. NO REPRESENTATION OR WARRANTY IS GIVEN, EXPRESS OR IMPLIED, AS TO THE ACCURACY OF THE INFORMATION contained herein. You assume without limitation all risk, all liability for loss and damages resulting from reliance on this information. **Tenant/Buyer has the responsibility to verify all information contained herein.**