

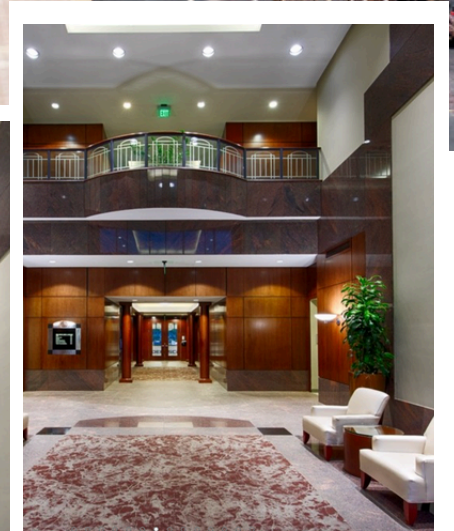
FOR LEASE

4800 NORTH POINT PKY
ALPHARETTA, GA 30022



ABOUT THE PROPERTY

Constructed in 1995, this Class A building boasts newly upgraded finishes. Its prime location offers easy access to North Point Mall and Avalon, featuring a variety of amenities such as hotels, restaurants, banks, and retail shops. Enjoy breathtaking lake views from every floor, complemented by generous parking ratios of 4.25 spaces per 1,000 square feet.



WILDMOR ADVISORS
Your Business In The Right Place



(404) 467-2121



info@wildmoradvisors.com



WILDMOR ADVISORS
your business in the right place

OFFICE SPACE WITH STUNNING VIEWS



CLASS A OFFICE SPACE

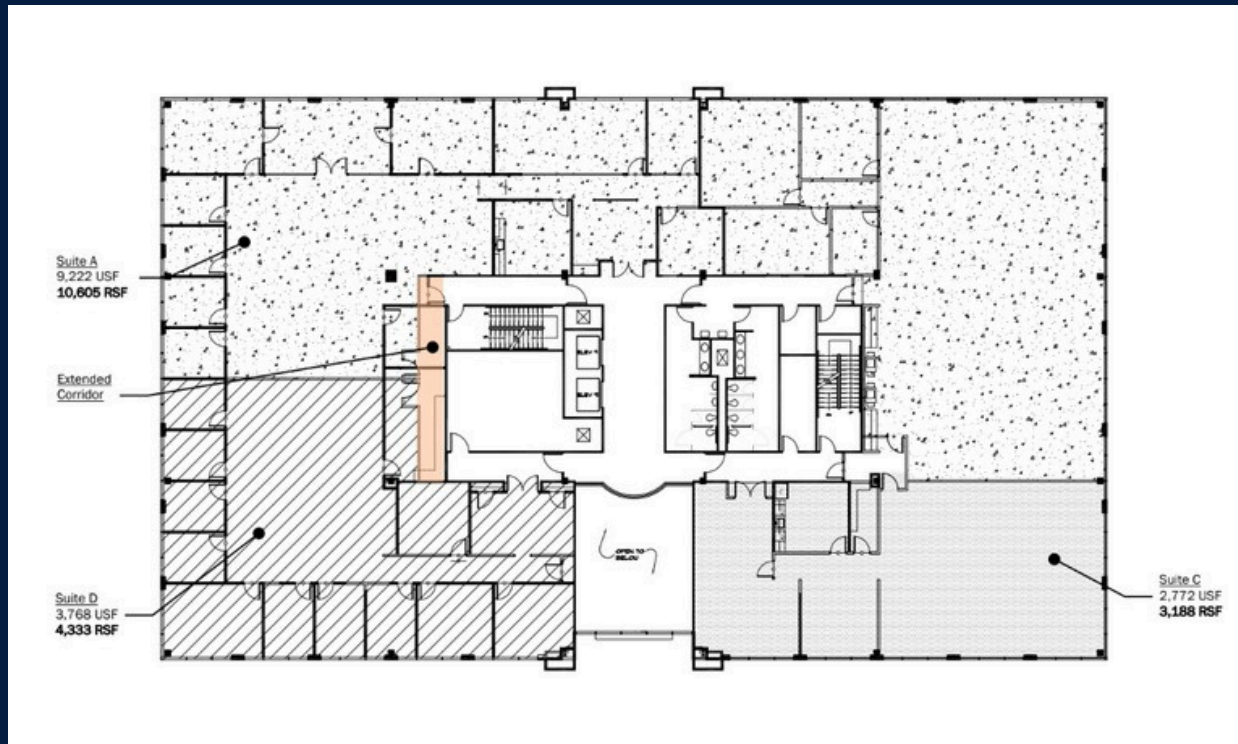
Exquisite spaces with elevator-lobby exposure and waterfront views

OFFERINGS

- **3rd Floor** - 18,868 SqFt
- **2nd Floor** - 18,126 SqFt

UP TO 36,812 SQFT AVAILABLE!

SUITE SPECS - 2ND FLOOR



SUITE SPECIFICATIONS

- 18,126 SqFt
- Numerous customizable options for compact spaces down to 3,188 SqFt.
- Full service available now for just \$25.50

SOUND MASKING DESIGN

OPEN CONCEPT FLOORPLAN

FEATURES SPECIALIZED GLASS PARTITIONS

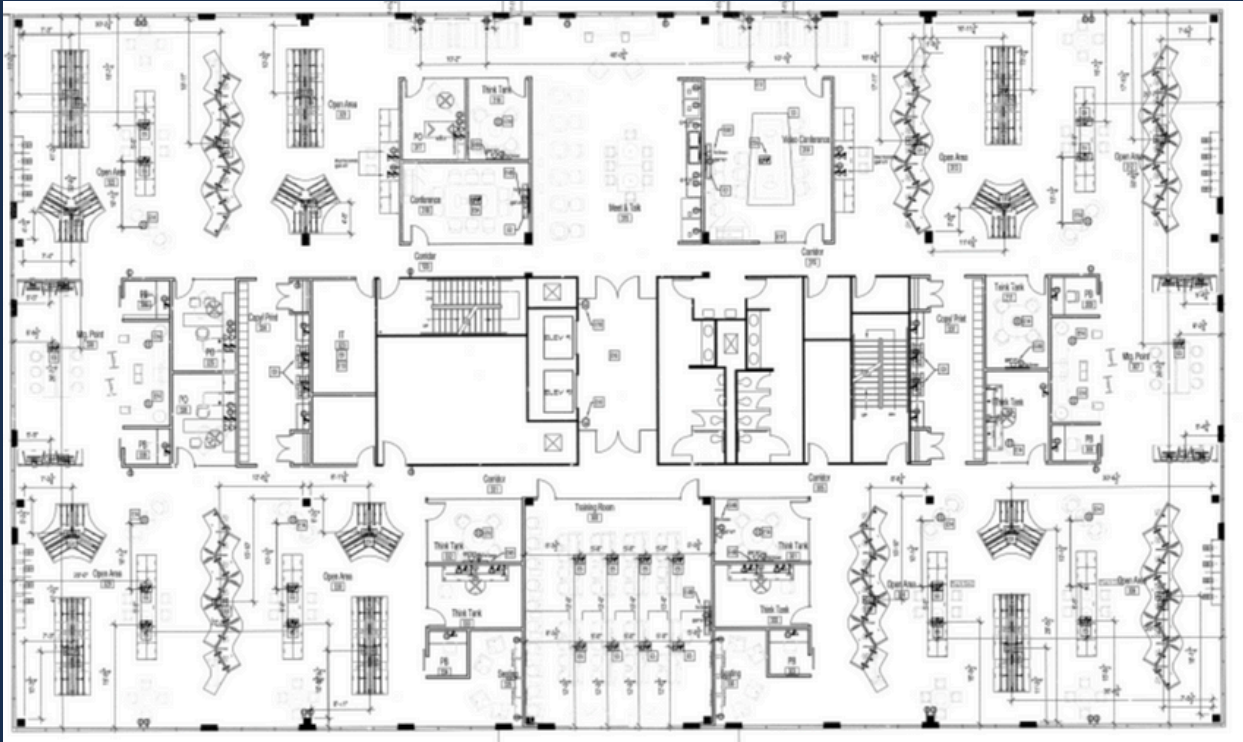
PROMOTES COLLABORATION



(404) 467-2121

info@wildmoradvisors.com

SUITE SPECS - 3RD FLOOR



SUITE SPECIFICATIONS

- 18,868 SqFt.
- Demiseable options down to 5,000 SqFt.
- \$25.50 Full Service
- Large Open Breakroom
- Large Training Room
- Available Now

SOUND MASKING DESIGN

OPEN CONCEPT FLOORPLAN

FEATURES SPECIALIZED GLASS PARTITIONS

PROMOTES COLLABORATION

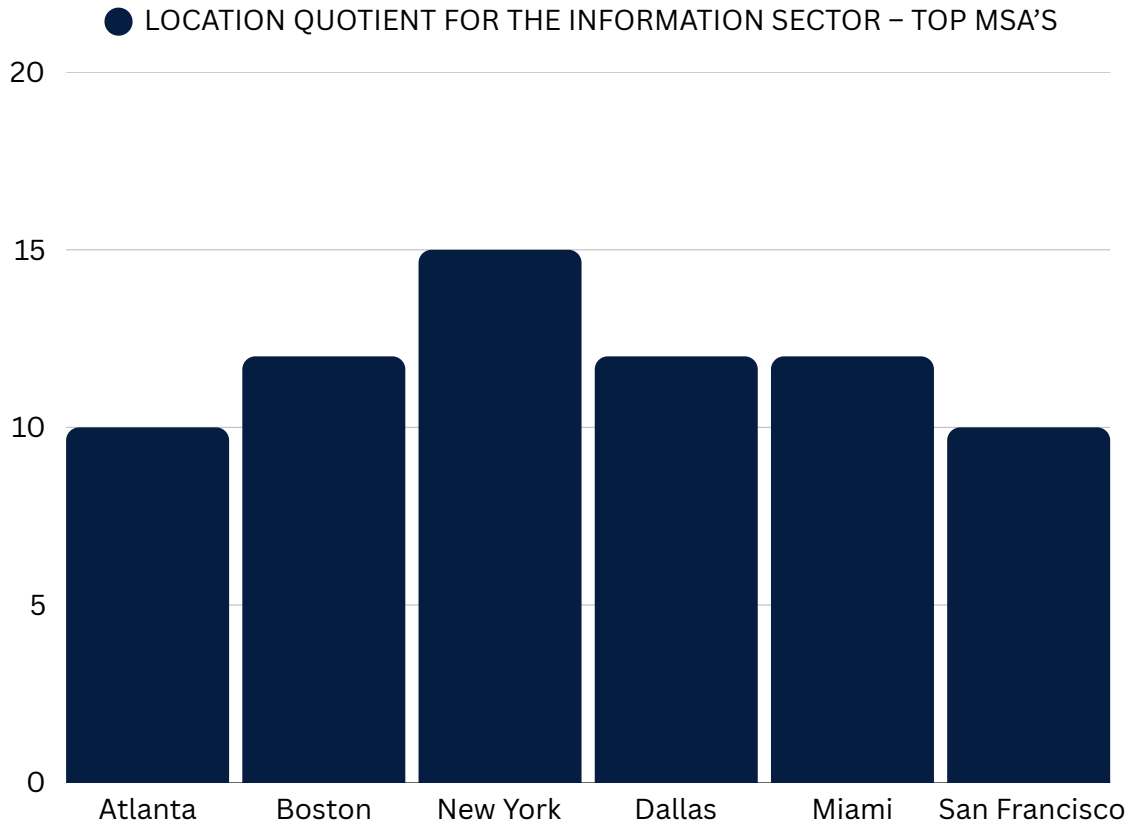


(404) 467-2121

info@wildmoradvisors.com

THE ALPHARETTA ADVANTAGE


4800 NORTH POINT PARKWAY




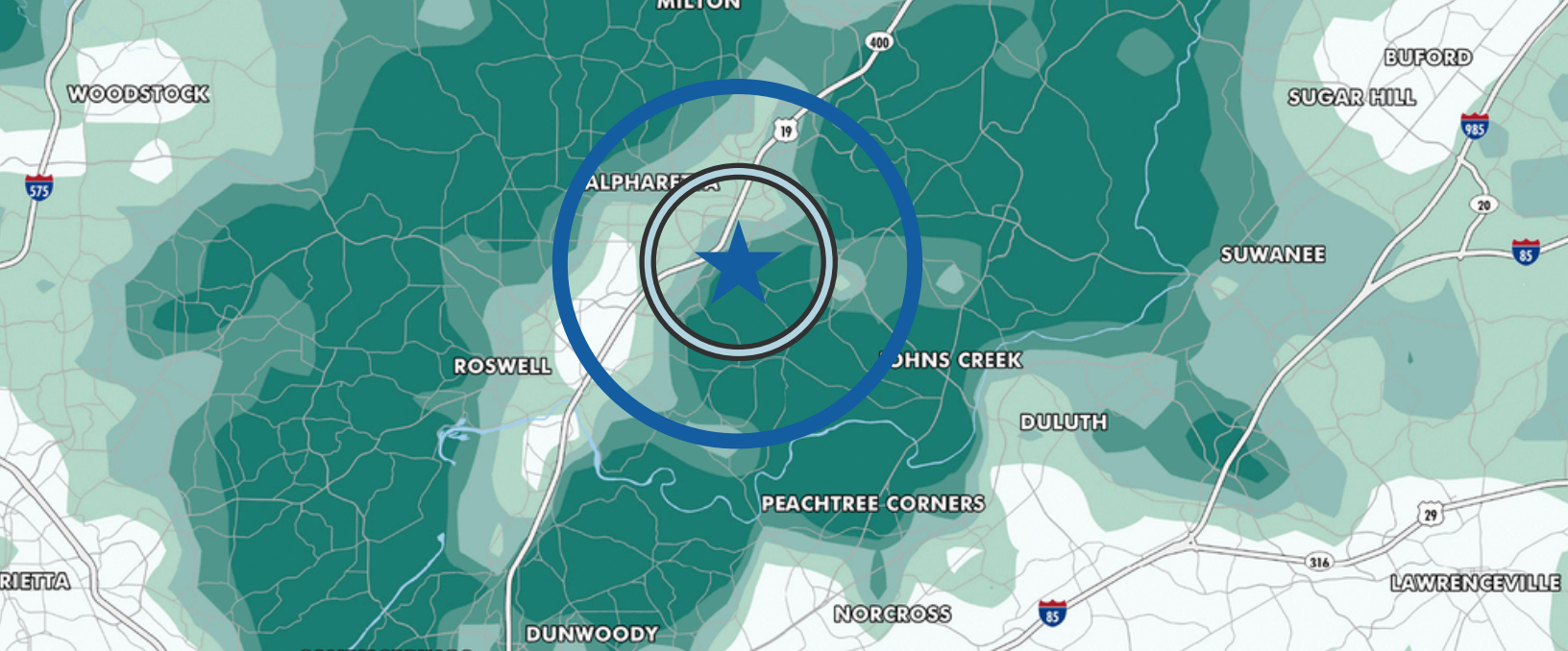
Well-positioned Class A building with annual population growth since 2010 and high education demographics



 WILDMOR.COM

 3565 Piedmont Rd NE
Bldg 3, Suite 715
Atlanta, GA 30305

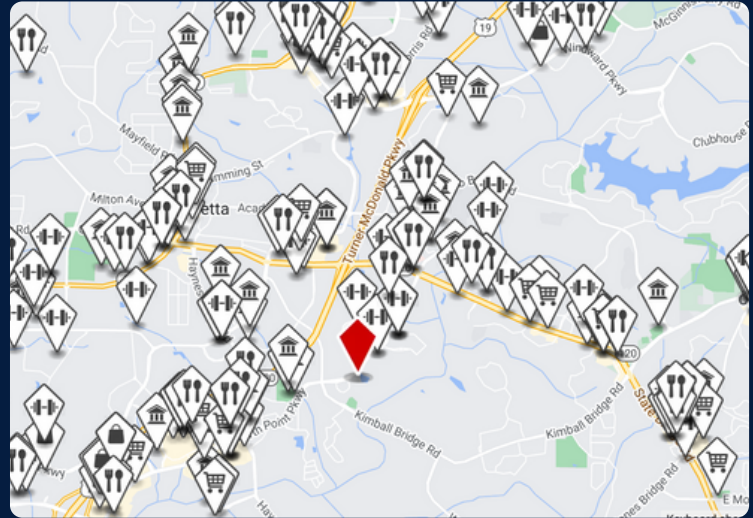
 (404) 467-2121



DEMOGRAPHICS

	<u>1 MILE</u>	<u>5 MILE</u>
2024 Total Population	6,249	210,249
Median Household Inc	\$119,516	\$117,767
Higher Education	82%	70%

100+ restaurants, retail, and banks within 5 miles of 4800 North Point Parkway



CONTACT US TO SCHEDULE A TOUR




SHAN MORRIS
Principal
(404) 467-2174
Shan@wildmor.com




MARGARET SCHULTZ
Managing Director
(404) 226-7058
Margaret@wildmor.com



 WILDMOR.COM

 3565 Piedmont Rd NE
Bldg 3, Suite 715
Atlanta, GA 30305

 (404) 467-2121