

For Lease

1,106 SF | Downtown Alpharetta Colony Park Offices

Second Floor Suite
Alpharetta, GA 30009

284 South Main Street | Alpharetta



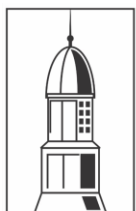
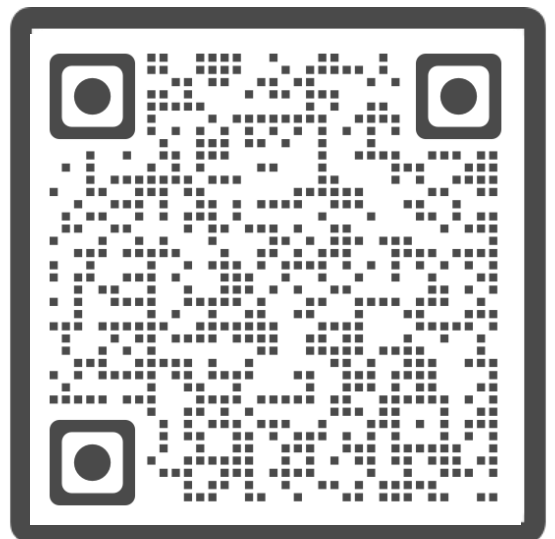
Property Highlights:

- 1,106 SF Fully Renovated – First Generation Office Space
- Alpharetta Walking District – Start of the Alpha Loop
- Part of a 9 Acre 100+ Condominium Office Park
- Professional On-Site Property Management and Leasing
- 500+ On-Site Parking Spaces
- Less than 1 Mile from Avalon Development & GA 400

Take the Virtual Tour Signature Renovations:

<https://my.matterport.com/show/?m=Af6waPN2M4q>

Property Type	Office
Space	1,106 sq ft
Rent Type	Modified Gross
Term	3-7 Year



COLONY PARK
OFFICE CONDOMINIUMS

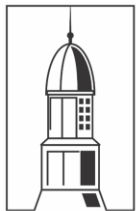
284 South Main St • Alpharetta, GA 30009

For Lease



Shiplap Feature Wall
Private Reception
3 Private Offices
Private Break Area and Private Bathrooms

284 South Main Street | Alpharetta



COLONY PARK
OFFICE CONDOMINIUMS

284 South Main St • Alpharetta, GA 30009

For Lease



284 South Main Street | Alpharetta

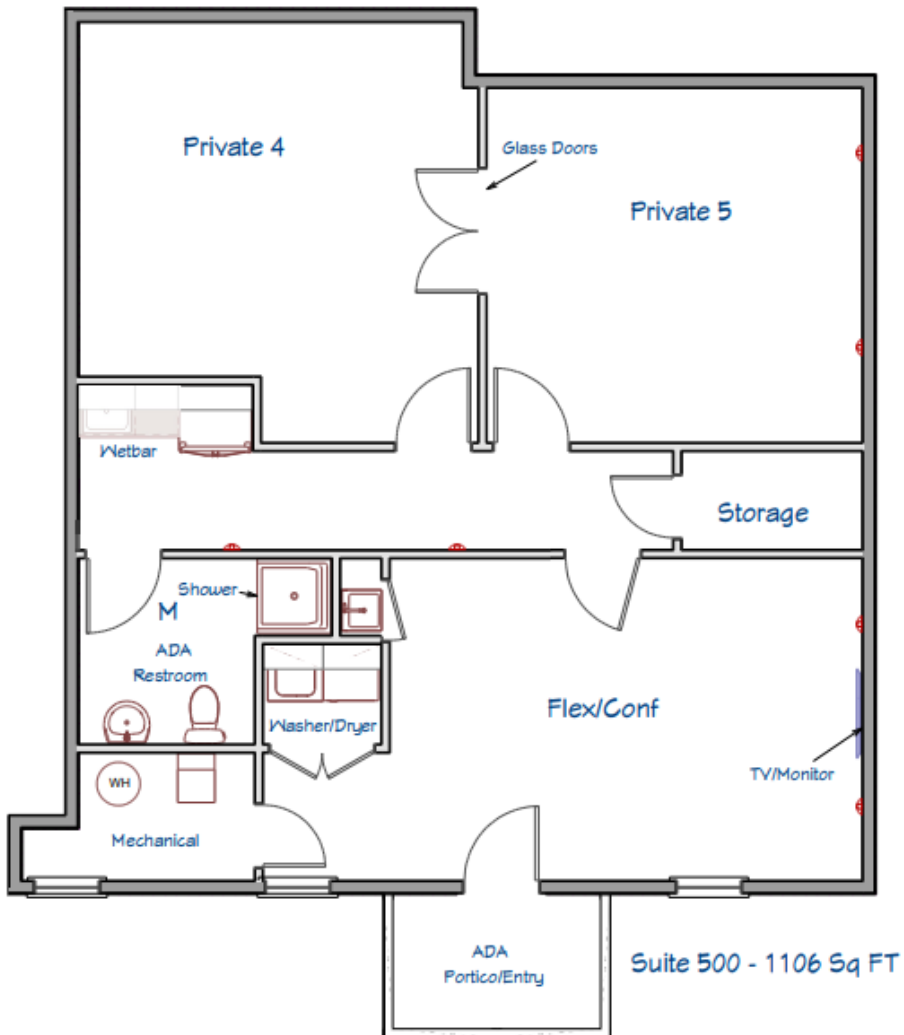


Floor Plan – 1,106 SF

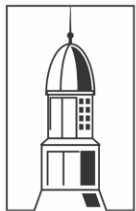
1106 SQ FT



Alternative Floor Plan – 1,106 SF



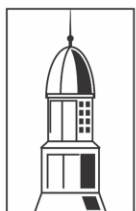
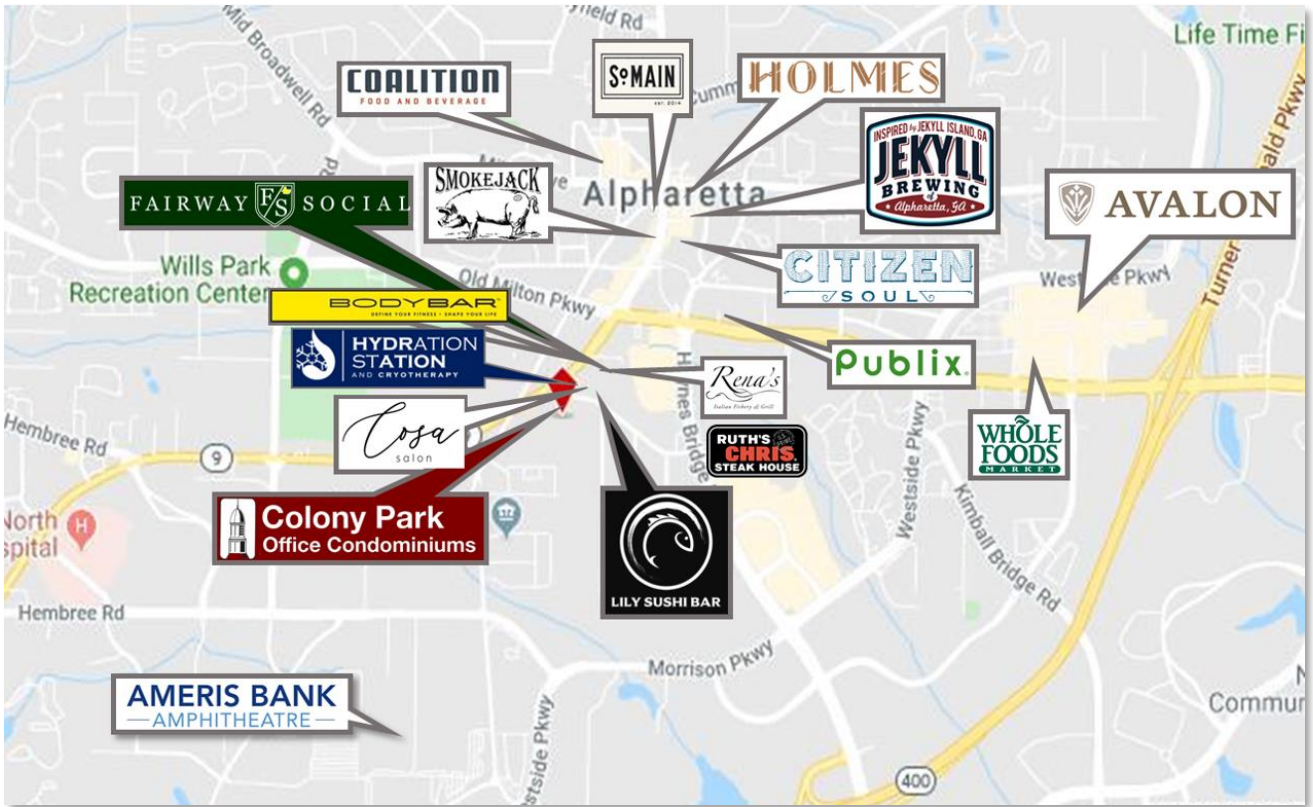
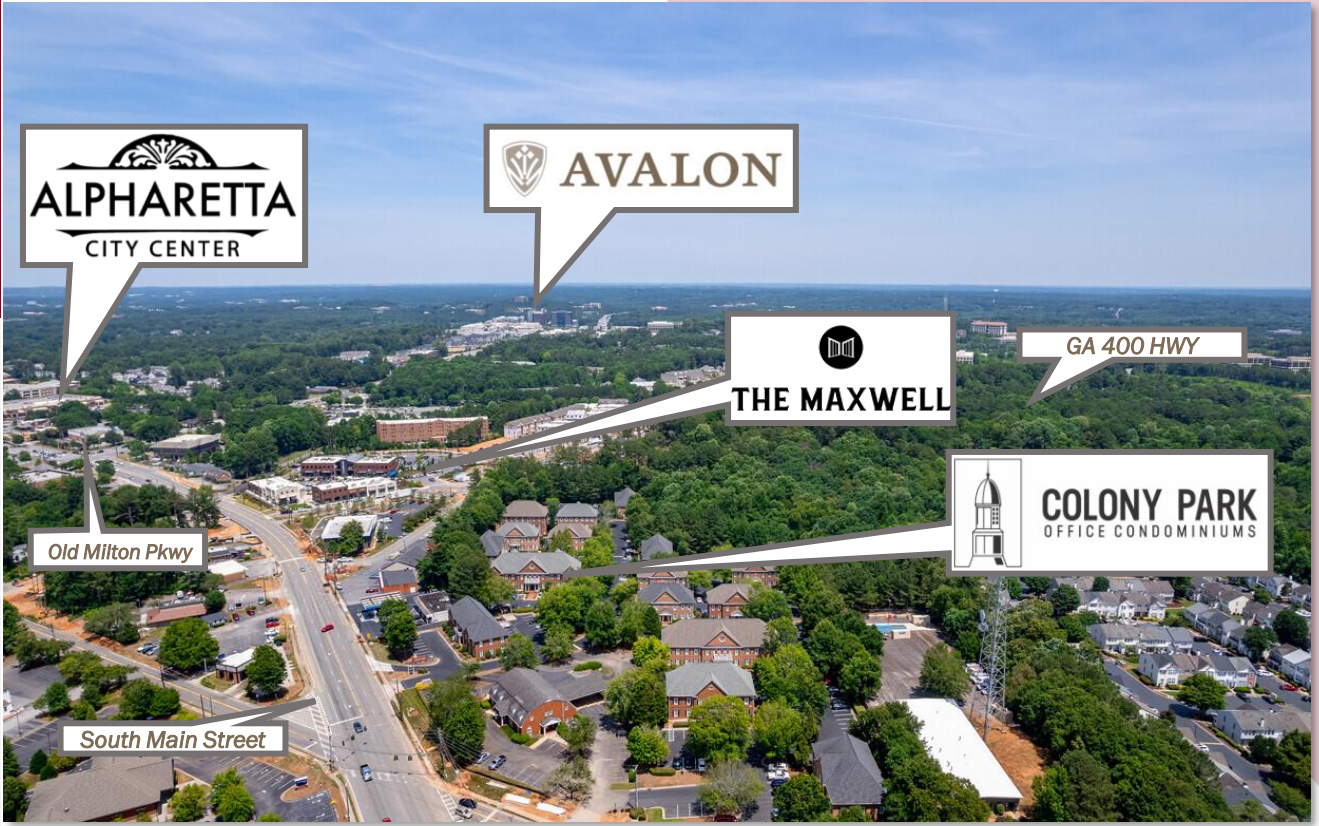
Suite 500 - 1106 Sq FT



Location

For Lease

284 South Main Street | Alpharetta



COLONY PARK
OFFICE CONDOMINIUMS

284 South Main St • Alpharetta, GA 30009