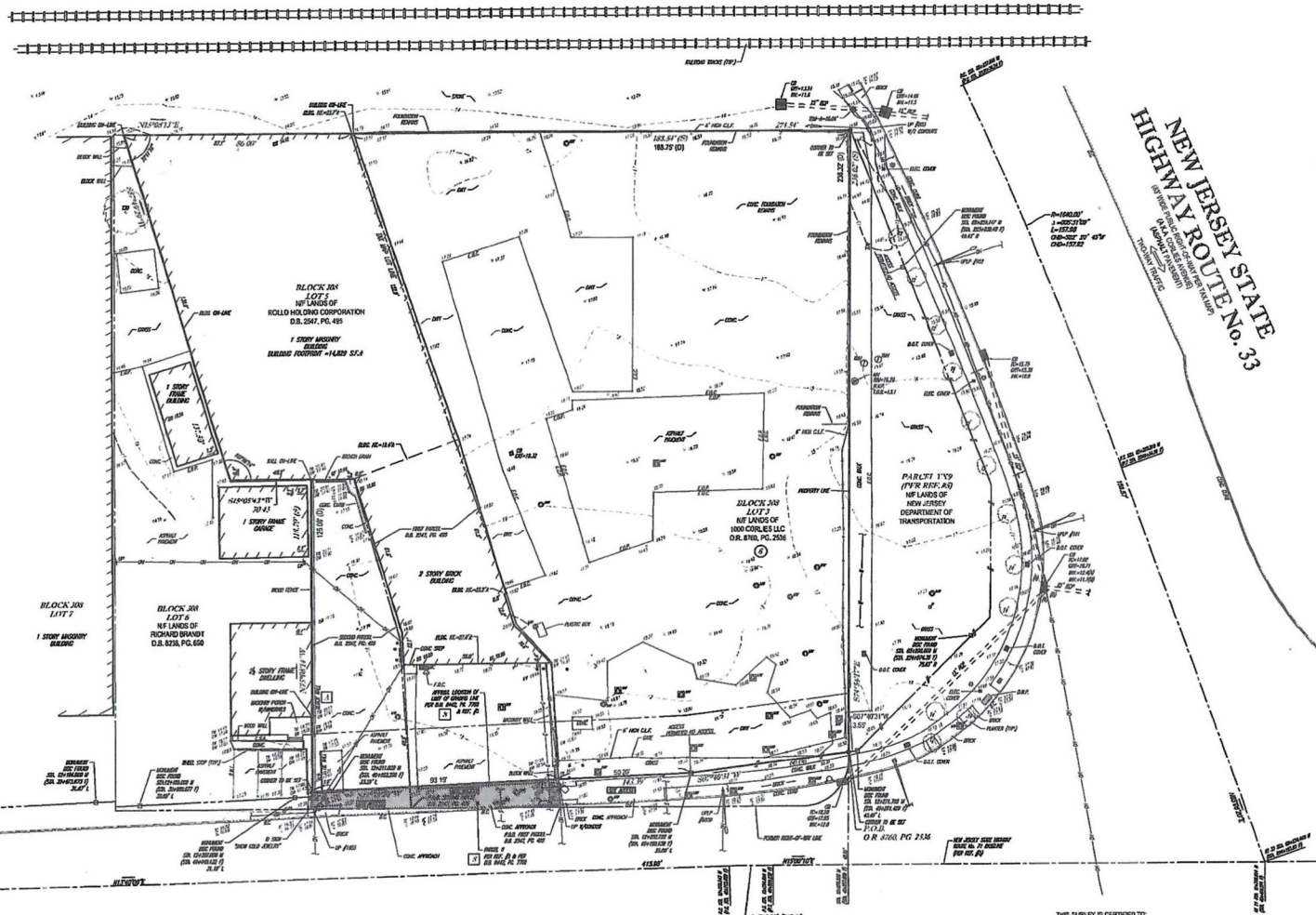


SHEET NO. 208
 LOT 7
 IN LAND OF
 CORRAL - NEW YORK & LONG ISLAND BRANCH RAILROAD
 © 2012



**NEW JERSEY STATE
 HIGHWAY ROUTE No. 33**
 (SEE MAP OF NEW JERSEY FOR LOCATION OF ROUTE 33)
 (SEE MAP OF NEW JERSEY FOR LOCATION OF ROUTE 33)

- LEGEND**
- EXISTING CONTOUR
 - x 101.00 EXISTING SPOT ELEVATION
 - x 101.10 EXIST. TOP OF CURB ELEVATION
 - x 101.20 EXIST. GUTTER ELEVATION
 - x 101.30 EXIST. TOP OF WALL ELEVATION
 - x 101.40 EXIST. FIRST BOTTOM OF WALL ELEVATION
 - x 101.50 EXIST. SECOND BULL ELEVATION
 - x 101.60 OVERSAND VIBES
 - APPROX. LOC. UNDERGROUND DRAIN LINE
 - APPROX. LOC. UNDERGROUND GAS LINE
 - APPROX. LOC. UNDERGROUND WATER LINE
 - HIGHWAY
 - WATER MAIN
 - WALL/PAV'TM
 - GAS VALVE
 - ONE-WAY
 - ELECTRIC METER
 - TELEPHONE MANSION
 - SEWER MANHOLE
 - CLEAN-OUT
 - POST
 - VIEW ELEVATION VIEWS
 - UTILITY POLE
 - UTILITY POLE/ARM POLE
 - UTILITY
 - TRAFFIC SIGNAL
 - AREA LIGHT
 - MONITORING WELL
 - MONITORING WELL ON CONC.
 - CATCH BASIN OR INLET
 - DOWN LANE FENCE
 - DEPRESSED DRIVE
 - EDGE OF CONC.
 - EDGE OF PAVEMENT
 - LANDSCAPED AREA
 - WALKWAY
 - TRUCK-STOP CONNECTION
 - DETECTABLE WARNING PAVT
 - SOFT WHITE LINE
 - ADVISORY LINE
 - TOP OF EMBANK.
 - 100% OF STRUCTURE AT GROUND LEVEL RELATIVE TO PROPERTY ELEVATION ACCESS/STAIRWAY
 - OCCLUSION TREE & TRUNK SIZE
 - USED SHADING AND DISTANCE
 - STATE PLANE BEARING AND DISTANCE
 - SURVEY DIMENSION
 - DEED DIMENSION
 - NOTES
 - FILE
 - TITLE REPORT EXCEPTION

SEE SHEET 2 OF 2 FOR NOTES AND REFERENCES

**NEW JERSEY STATE
 HIGHWAY ROUTE No. 71**
 (VARIABLE WIDTH PUBLIC HIGHWAY PER TAX MAP)
 (A.K.A. SOUTH MAIN STREET)

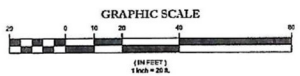


TABLE OF SIGNIFICANT OBSERVATION

□ BLOCK WALL BY OWNER'S PROPERTY

NOTE: THESE ARE THE POSSIBLE ENCROACHMENTS OBSERVED DURING THE PROCESS OF CONDUCTING THE SURVEY. THERE MAY BE OTHERS NOT RECOGNIZED BY THE SURVEYOR.

THIS SURVEY IS CERTIFIED TO:
 EAST RIDGE DEVELOPMENT, LLC
 FIRST AMERICAN TITLE INSURANCE COMPANY

THIS IS TO CERTIFY THAT THIS MAP OR PLAT AND THE SURVEY ON WHICH IT WAS BASED WERE MADE IN ACCORDANCE WITH THE 1918 MEASUREMENTS ACT, THE REQUIREMENTS FOR ALTA'S LAND TITLE SURVEY, JOBBY ESTABLISHED AND ADOPTED BY ALTA AND NSP, AND THE CODES REFS. 1, 2, 3, 4, 5, 6, 7, 8, 9, 10, 11, 12, 13, 14 OF TABLE 2 THEREOF. THE FIELD WORK WAS COMPLETED ON JANUARY 22, 2017.

NOT A VALID ORIGINAL DOCUMENT UNLESS ENDORSED WITH FRASE DEPRESSION OR RELAT INK SEAL

JAMES D. SENS
 NEW JERSEY PROFESSIONAL LAND SURVEYOR #304537260
 NEW JERSEY CERTIFICATE OF AUTHORIZATION #B040103800

DATE: 03-20-2017
 DATE: 03-20-2017
 DATE: 03-20-2017

ALTA/NSP'S LAND TITLE SURVEY
CORLIES AVENUE & SOUTH MAIN STREET
 111 SOUTH MAIN STREET
 LOTS 3 & 5, BLOCK 306
 TOWNSHIP OF NEWTUNE, MONMOUTH COUNTY
 STATE OF NEW JERSEY

CONTROL POINT ASSOCIATES, INC.
 111 SOUTH MAIN STREET
 NEWTUNE, NJ 07959
 TEL: 908.251.1111
 FAX: 908.251.1112
 WWW.CONTROLPNT.COM

DATE: 03-20-2017
 DATE: 03-20-2017
 DATE: 03-20-2017



FOR A COPY OF ANY WRITTEN RECORDS REFERENCED BY THIS MAP OR PLAT, CONTACT THE SURVEYOR OR THE RECORDS OFFICE OF THE COUNTY CLERK OF MONMOUTH COUNTY, NEW JERSEY.