

EST. 1871.

DENVER

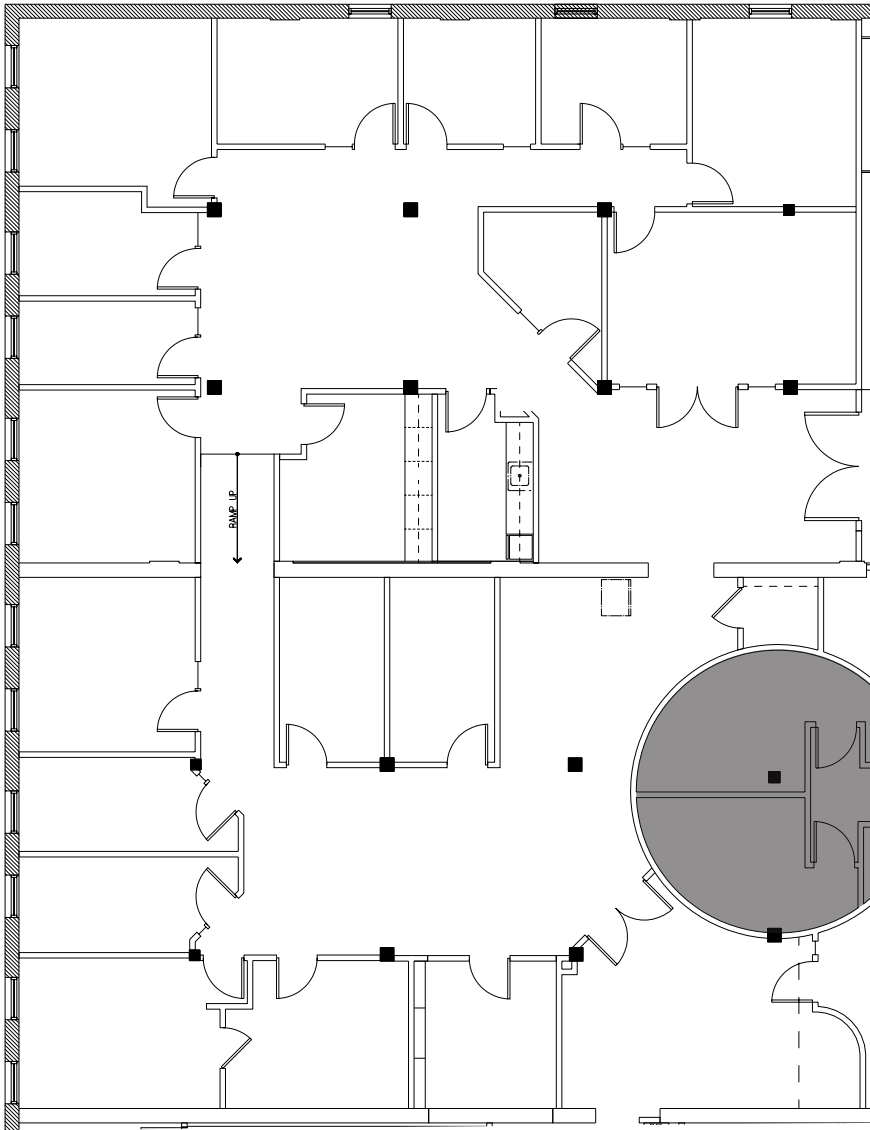
EX

**WAZEE**

CHANGE

COLO.

1900 WAZEE STREET, LODO



SUITE  
300 & 305  
5,657 RSF



FOR MORE INFORMATION, CONTACT:

**JAMIE GARD**

Vice Chairman  
tel. 303-260-4341  
jamie.gard@nmrk.com

**WHITNEY HAKE**

Senior Managing Director  
tel. 303-260-4202  
whitney.hake@nmrk.com

**GRACE LESSARD**

Associate Director  
tel. 303-260-4210  
grace.lessard@nmrk.com

**NEWMARK**

