



1992 Route 284, Slate Hill, NY 10973

1992 Route 284, Slate Hill, NY 10973

Vincent Senese
Seneco Enterprises, llc
280 Dolson ave, Middletown, NY 10940
vsenese@ocservice.com
(845) 343-6443

1992 Route 284, Slate Hill, NY 10973

Negotiable

Bank/US Post Office building currently partially occupied by the US Postal Service. Plenty of parking. 2,000 SF Bank. Two drive thru windows available. Ready to go. Bank currently has been remodeled since 2012. Was formally Sterling National Bank. It has a bank vault as well as deposit boxes, along with other safes through-out the bank. Great opportunity for another bank to open. Updated state of the art security system. All bank features in place, along with all new furniture. This location is ideal for any bank and ready to re-open as soon as possible.



Primary Photo

Total Space Available:	N/A
Rental Rate:	Negotiable
Property Type:	Retail
Property Sub-type:	Strip Center
Additional Sub-types:	Office Building
Building Size:	2,000 SF
Gross Leasable Area:	2,000 SF
Year Built:	1988
Lot Size:	65,340 SF



1

Space 1

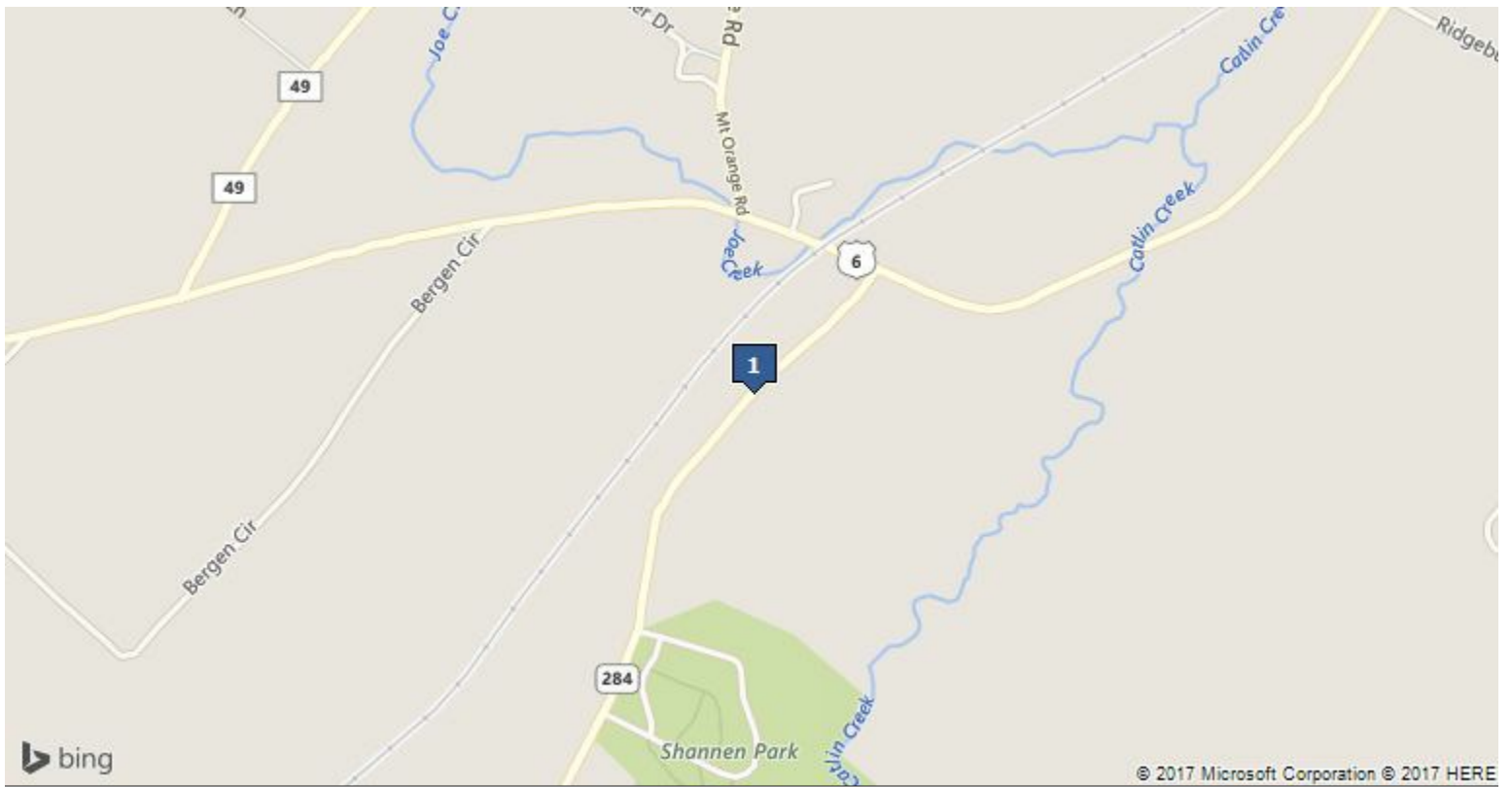
Space Available	2,000 SF
-----------------	----------

Rental Rate	Negotiable
-------------	------------

Space / Lot Type	Strip Center
------------------	--------------

Lease Type	NNN
------------	-----

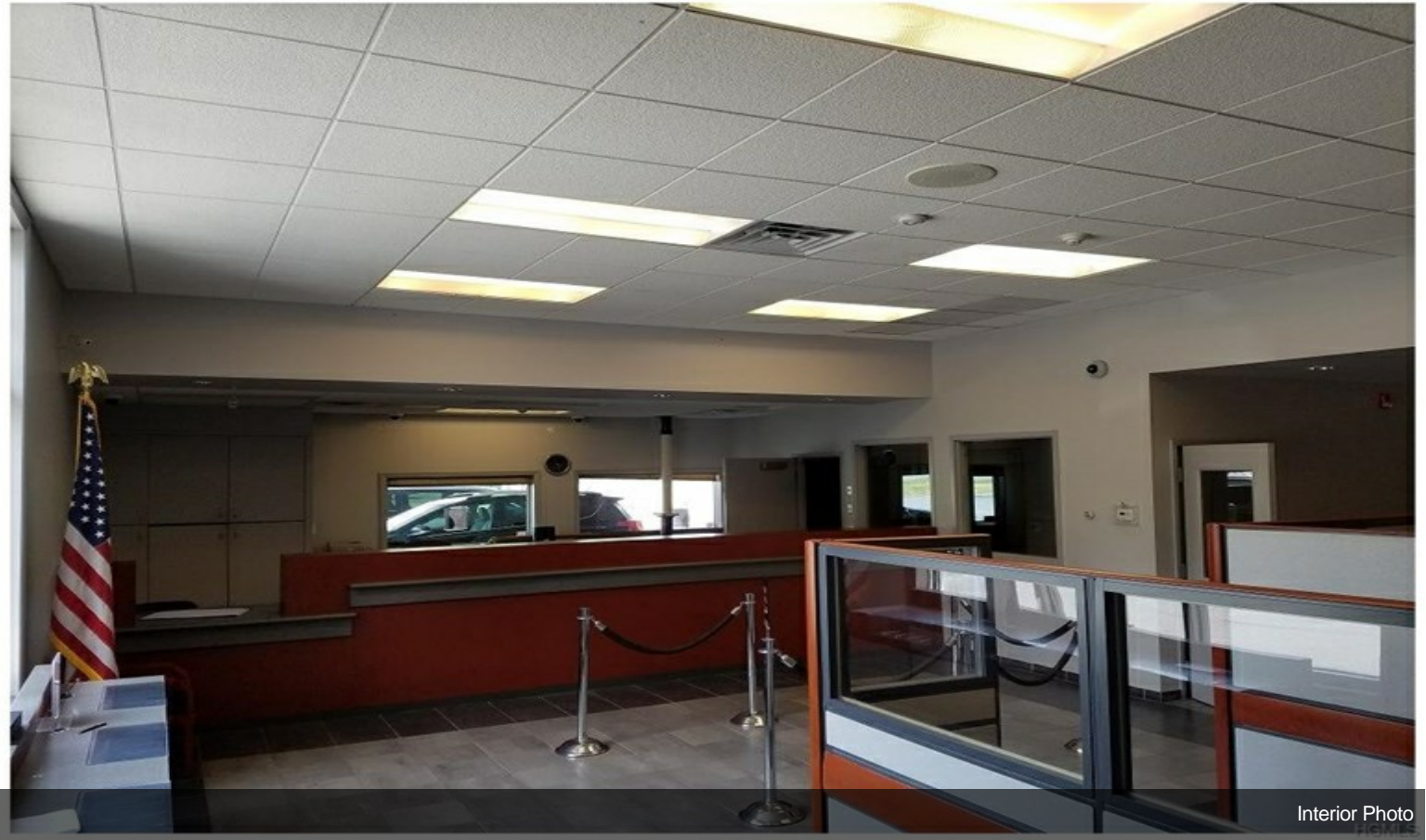
Date Available	Sep 2017
----------------	----------



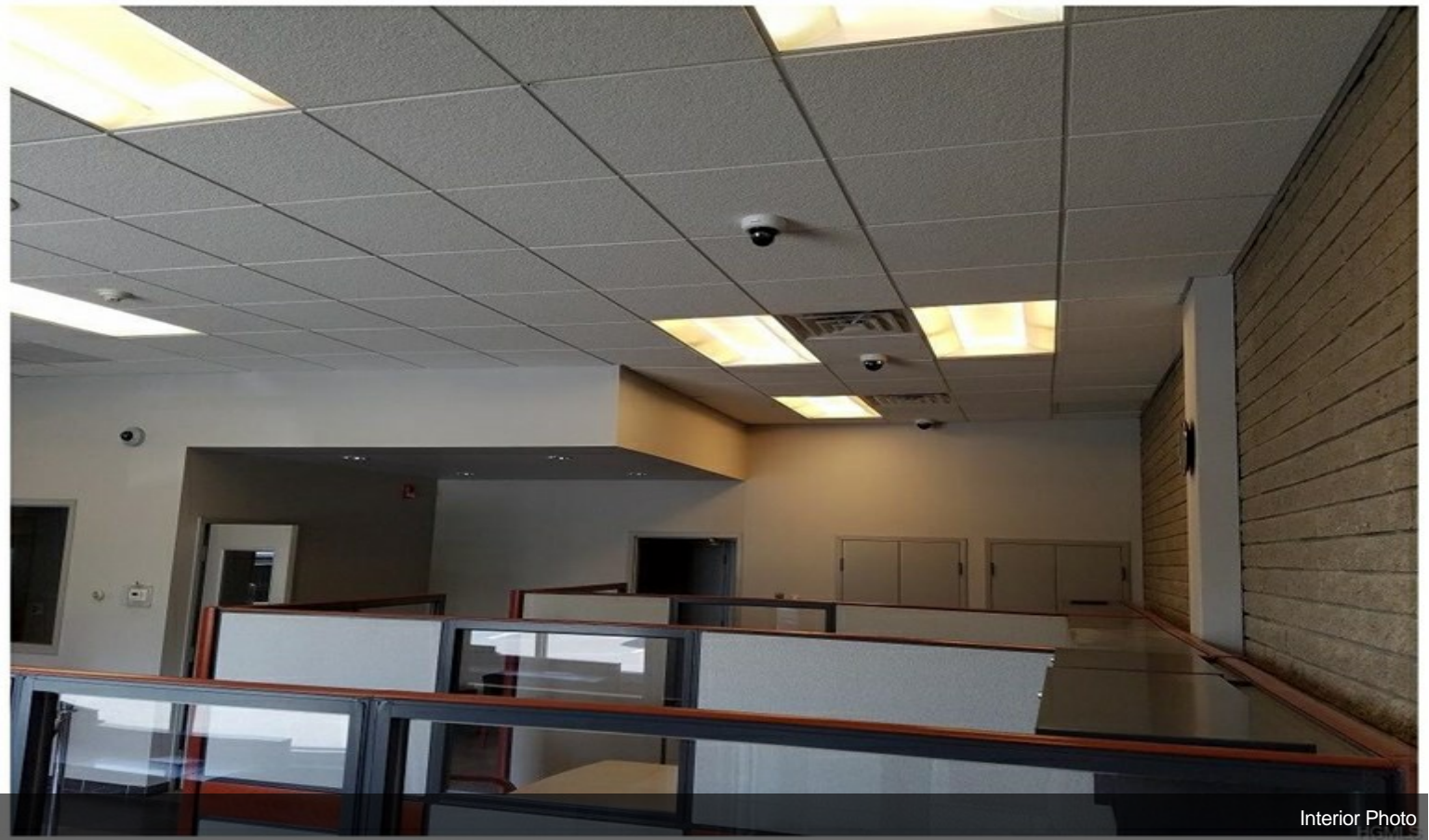
1992 Route 284, Slate Hill, NY 10973

1992 ROUTE 284, Slate Hill, NY 10973 (Orange County).

Property Photos

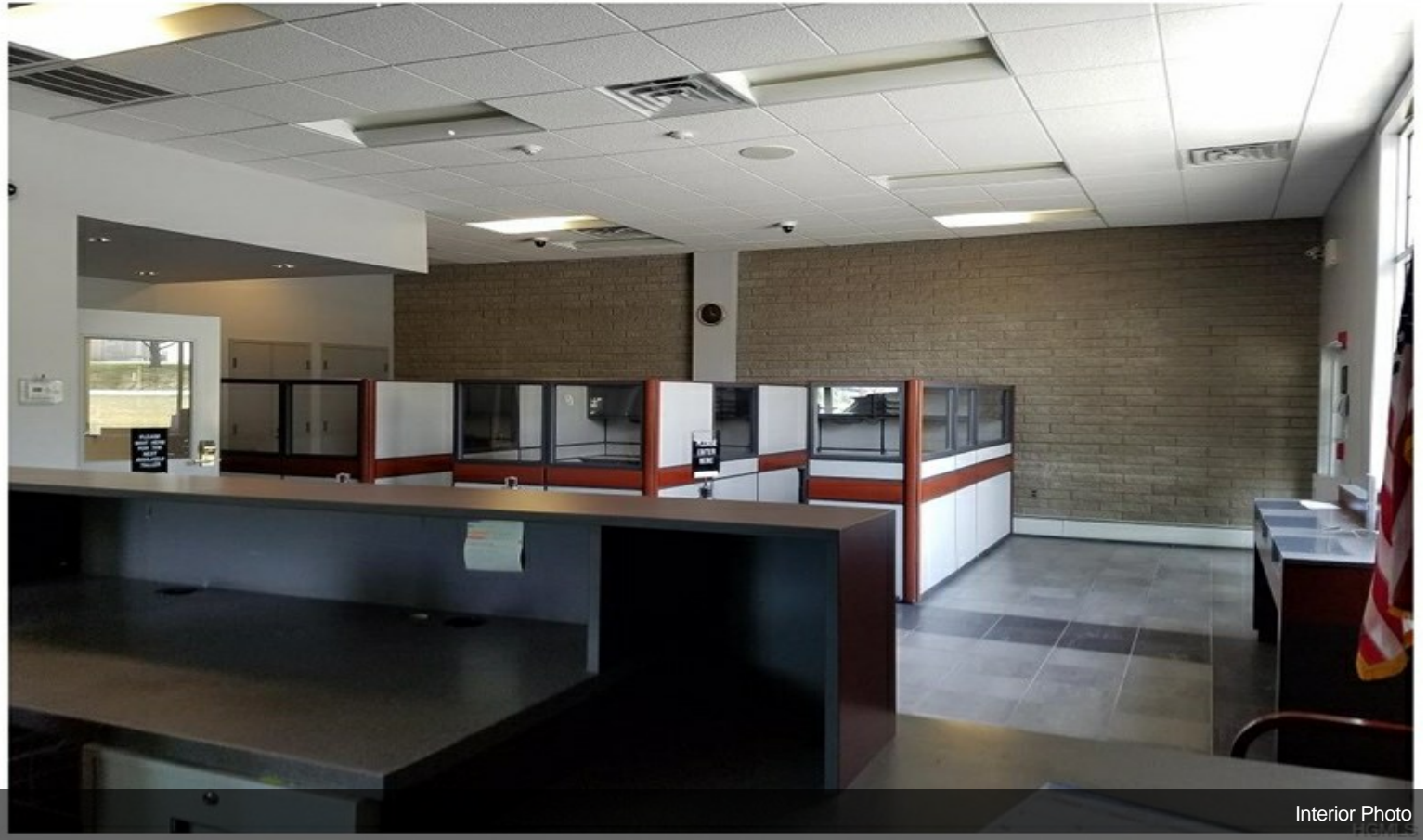


Interior Photo



Interior Photo

Property Photos



Interior Photo