

349 W. 168th Street
Gardena, CA 90248

15,580 SF
INDUSTRIAL WAREHOUSE FOR LEASE



Brian Held
Senior Vice President

+1 310 363 4825
Brian.held@cbre.com

Lic. 01100518

Robert Spratlin
Associate

+1 310 363 4827
Robert.spratlin@cbre.com

Lic. 02236093

Luke Snyder
Associate

+1 310 363 4820
Luke.snyder@cbre.com

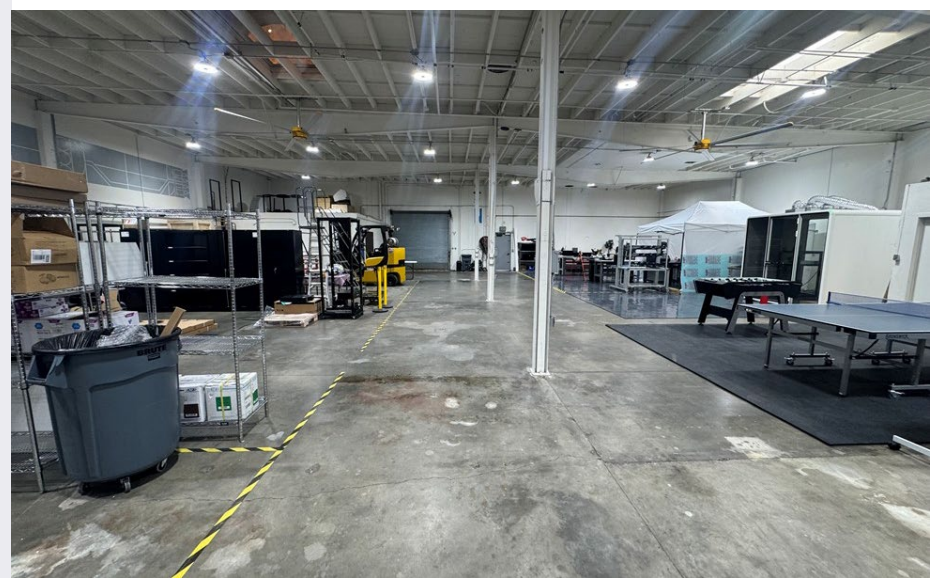
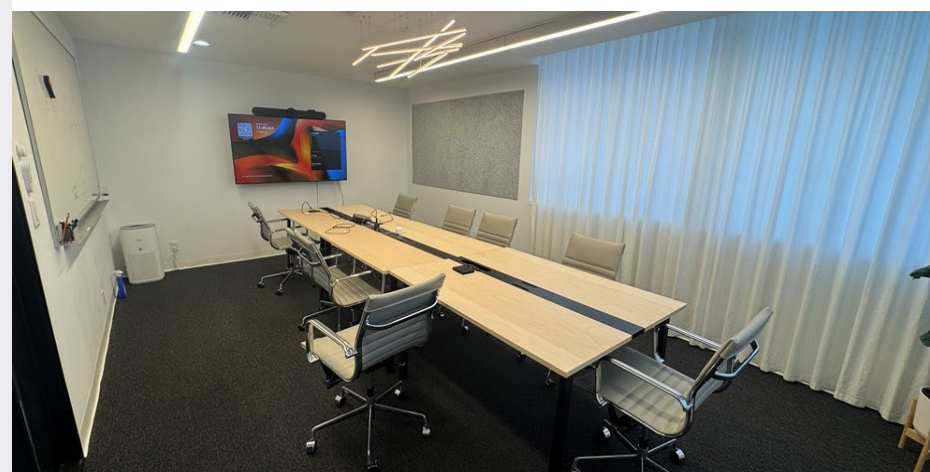
Lic. 02333178

CBRE

PROPERTY SPECIFICATIONS

Free Standing Building
High Image Offices

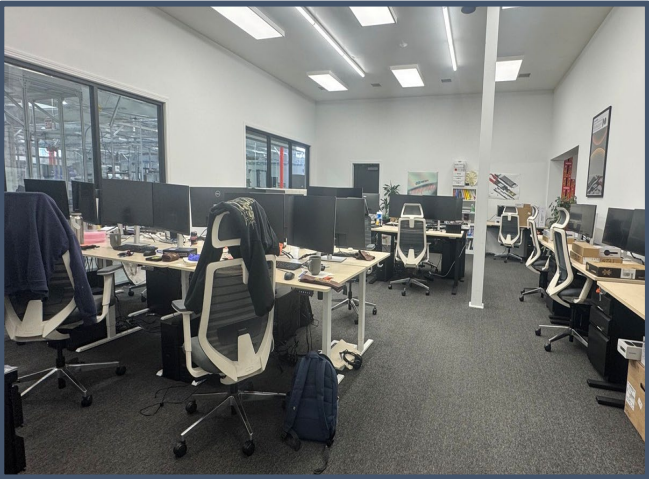
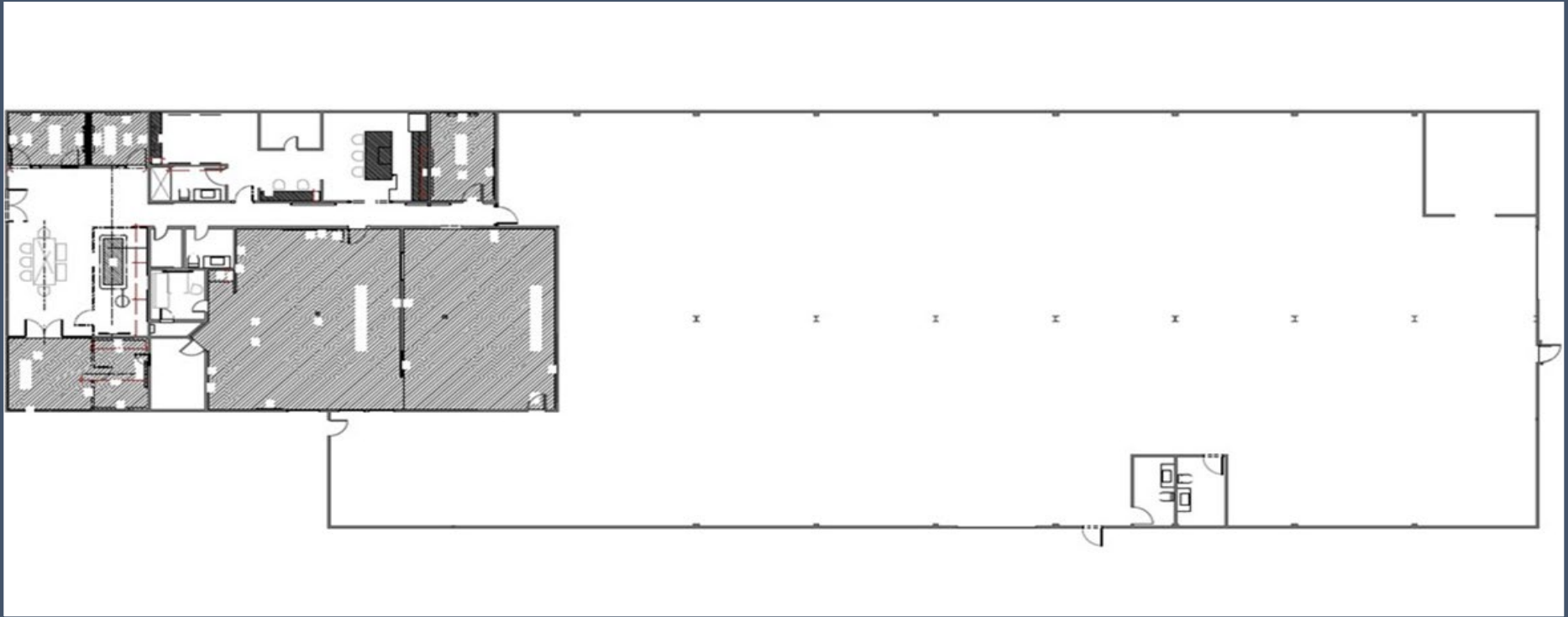
Convenient Access to 110, 91, 105 & 405 Freeways



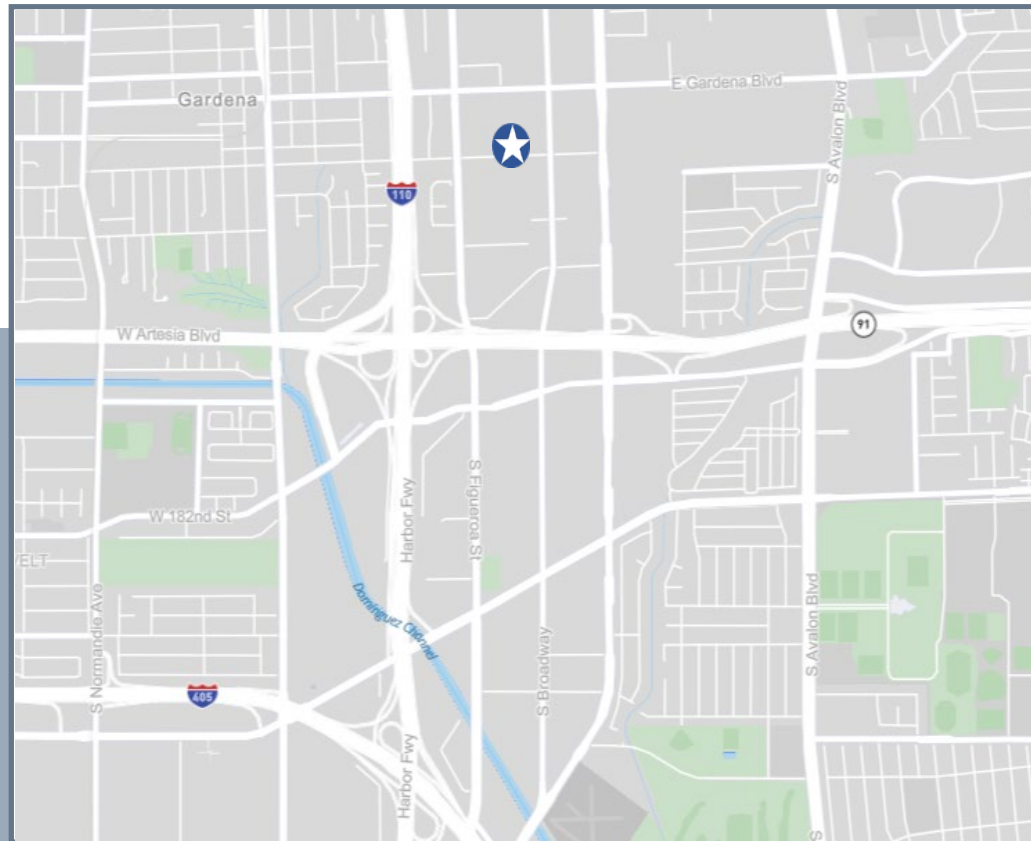
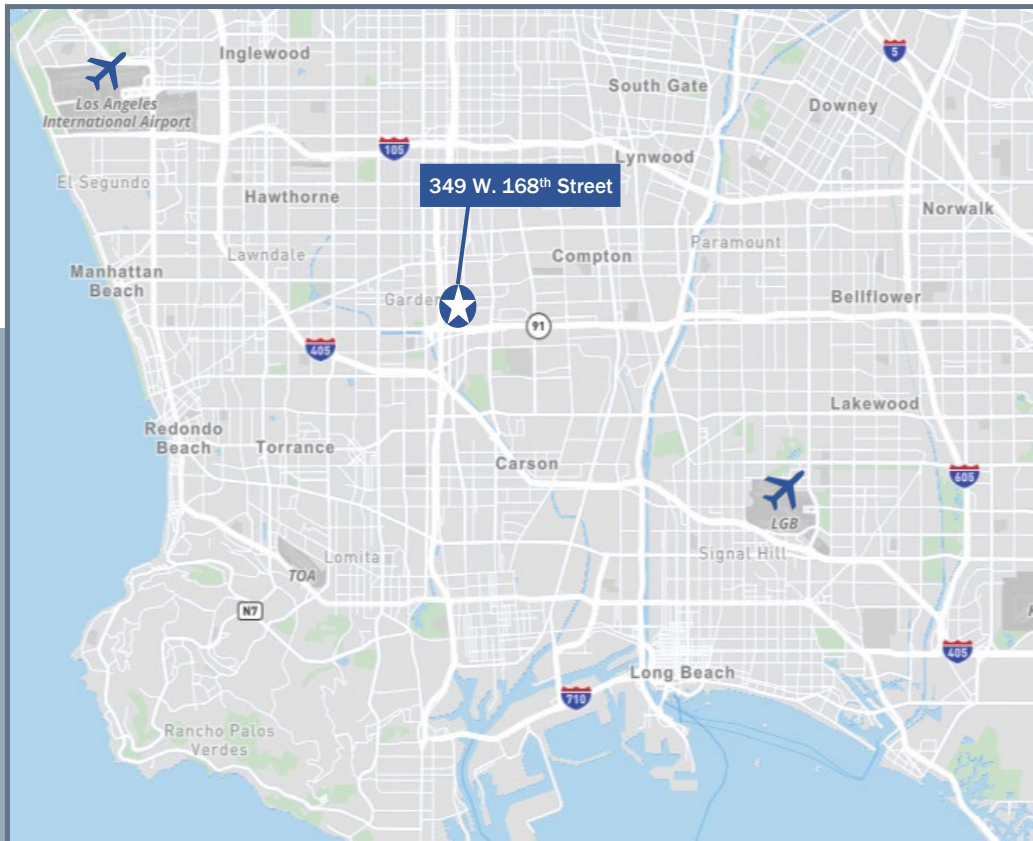
Spec Type	Spec Details
Possession	November 1, 2026
Lease Rate	\$24,928 month (\$1.60 PSF) Gross
Building Size	+/- 15,580 SF
Land Size	37,078 SF
Office Size	+/- 3,000 SF
Power	400 Amps, 240 Volts, 3 Phase
Clear Height	14' – 16'
Loading	Three (3) Ground Level Doors
Yard	Fenced & Paved
Parking	32 Stalls
Zoning	ML
Other	Located in the city of Carson (Gardena P.O)

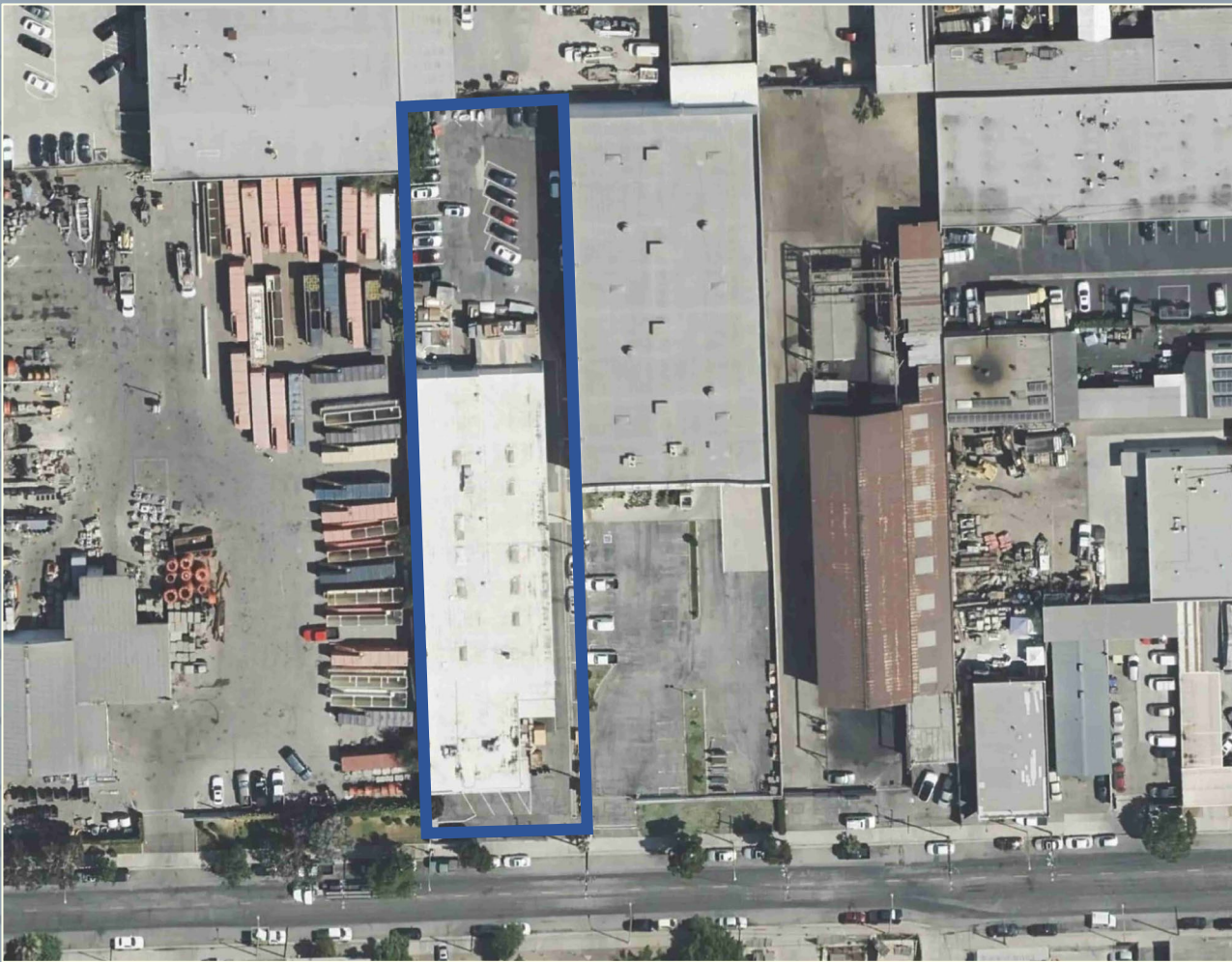
*Lessee to verify all specifications herein

FLOOR PLAN



LOCATION MAPS





Brian Held
Senior Vice President
+1 310 363 4825
Brian.held@cbre.com
Lic. 01100518

Robert Spratlin
Associate
+1 310 363 4827
Robert.spratlin@cbre.com
Lic. 02236093

Luke Snyder
Associate
+1 310 363 4820
Luke.snyder@cbre.com
Lic. 02333178

CBRE

© 2026 CBRE, Inc. All rights reserved. This information has been obtained from sources believed reliable but has not been verified for accuracy or completeness. CBRE, Inc. makes no guarantee, representation or warranty and accepts no responsibility or liability as to the accuracy, completeness, or reliability of the information contained herein. You should conduct a careful, independent investigation of the property and verify all information. Any reliance on this information is solely at your own risk. CBRE and the CBRE logo are service marks of CBRE, Inc. All other marks displayed on this document are the property of their respective owners, and the use of such marks does not imply any affiliation with or endorsement of CBRE. Photos herein are the property of their respective owners. Use of these images without the express written consent of the owner is prohibited.