

Meadow Mart Village

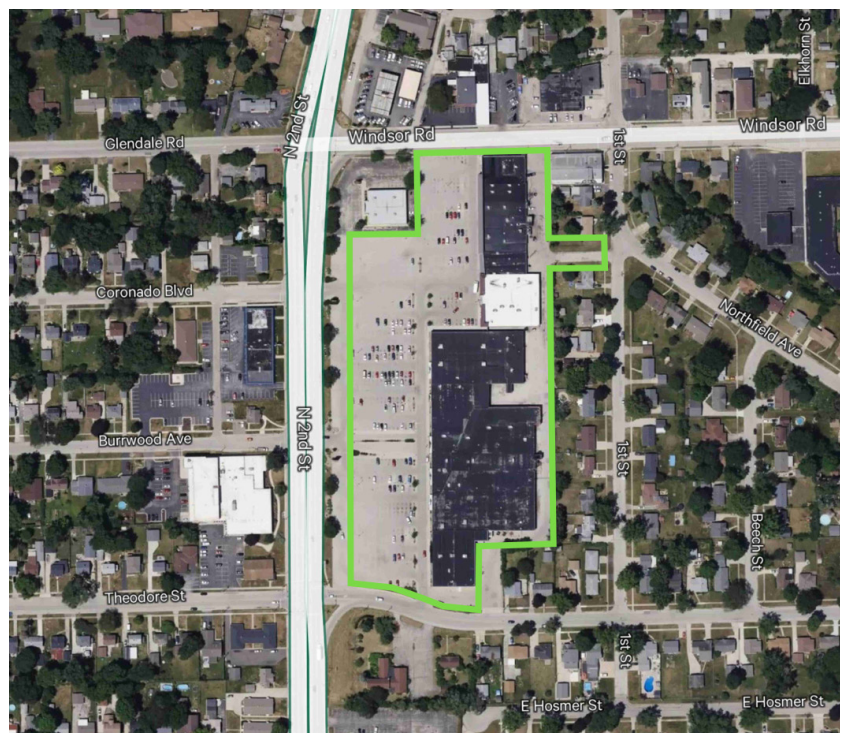
6307-6499 N. 2nd St.

Loves Park, IL



Property Highlights

- + Units from 2,414 to 15,793 SF available
- + 150,000 SF Shopping Center
- + Prime N. 2nd St. location with two signalized intersections for easy access
- + Anchored with apparel and value oriented stores: Citi Trends, Dollar Tree, Planet Fitness, Backyard Bar & Grill



Meadow Mart Village

6307-6499 N. 2nd Street, Loves Park, IL

For Lease



Meadow Mart Village

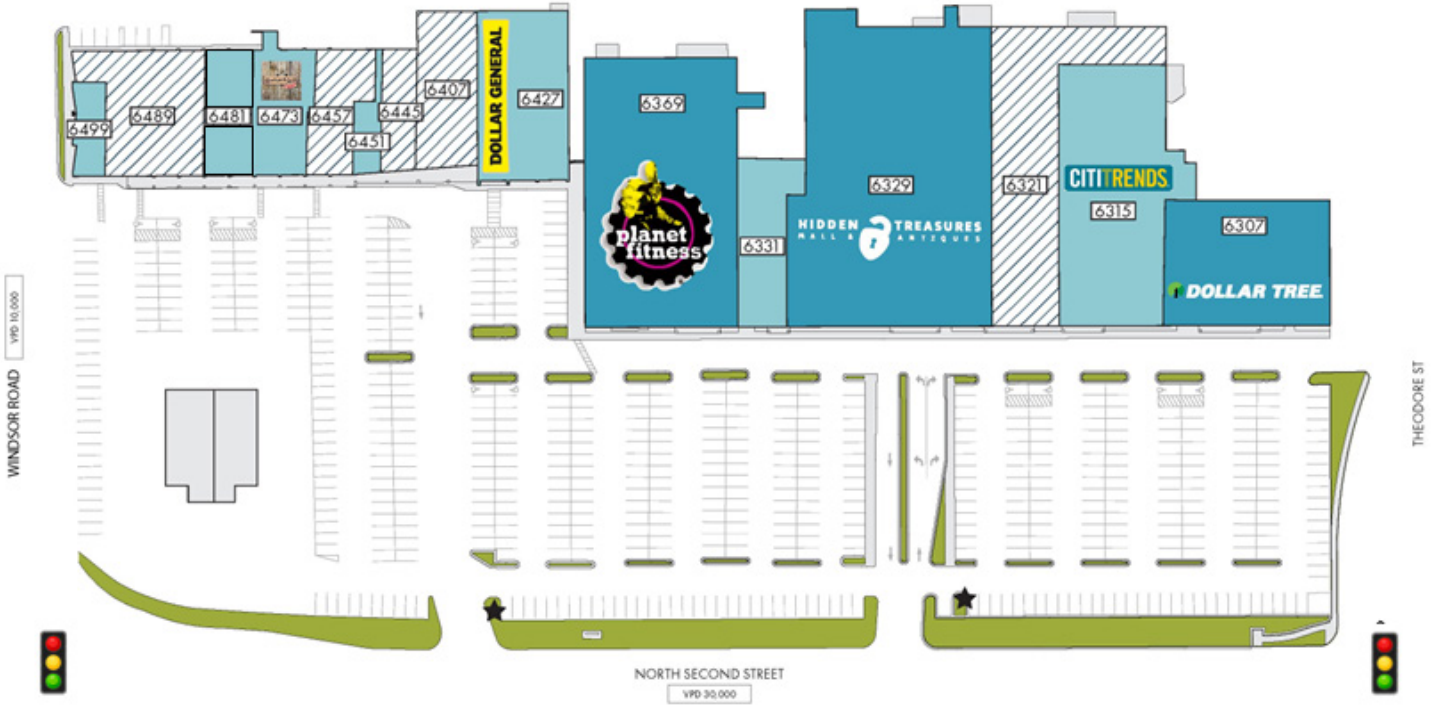
6307-6499 N. 2nd Street, Loves Park, IL

For Lease

DATE: 03/29/23
PROJECT: 23026.03

- AVAILABLE SPACE
- OCCUPIED SPACE
- ANCHOR TENANT
- NAP LOT
- Pylon SIGNAGE
- TRAFFIC LIGHT

FOR SCHEMATIC PURPOSES ONLY NOT TO SCALE



MEADOW MART VILLAGE

LOVES PARK, IL

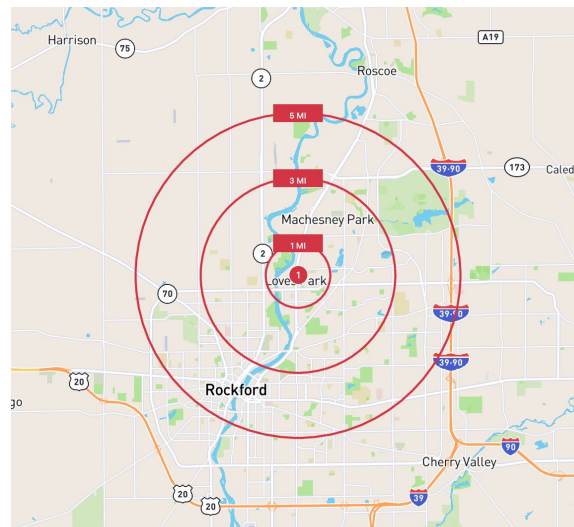
Available Spaces	
Suite	Square Footage
Suite 6321	15,793 SF
Suite 6407	5,872 SF
Suite 6445	2,414 SF
Suite 6457	4,063 SF
Suite 6489	8,367 SF

Meadow Mart Village

6307-6499 N. 2nd Street, Loves Park, IL

For Lease

	1 MILE	3 MILES	5 MILES
POPULATION			
2024 Population - Current Year Estimate	8,505	66,735	148,036
2029 Population - Five Year Projection	8,233	65,424	145,221
2020 Population - Census	8,786	68,066	151,398
2010 Population - Census	9,276	70,358	158,112
2020-2024 Annual Population Growth Rate	-0.76%	-0.46%	-0.53%
2024-2029 Annual Population Growth Rate	-0.65%	-0.40%	-0.38%
HOUSEHOLDS			
2024 Households - Current Year Estimate	3,734	28,438	62,290
2029 Households - Five Year Projection	3,710	28,451	62,462
2020 Households - Census	3,789	28,590	62,568
2010 Households - Census	3,834	28,609	63,077
2020-2024 Compound Annual Household Growth Rate	-0.34%	-0.13%	-0.10%
2024-2029 Annual Household Growth Rate	-0.13%	0.01%	0.06%
2024 Average Household Size	2.24	2.31	2.33
HOUSEHOLD INCOME			
2024 Average Household Income	\$69,434	\$86,251	\$85,620
2029 Average Household Income	\$81,067	\$98,962	\$97,839
2024 Median Household Income	\$52,759	\$61,898	\$60,222
2029 Median Household Income	\$59,225	\$70,440	\$68,240
2024 Per Capita Income	\$30,822	\$36,966	\$36,106
2029 Per Capita Income	\$36,890	\$43,283	\$42,172
HOUSING UNITS			
2024 Housing Units	3,980	30,561	68,524
2024 Vacant Housing Units	246 6.2%	2,123 6.9%	6,234 9.1%
2024 Occupied Housing Units	3,734 93.8%	28,438 93.1%	62,290 90.9%
2024 Owner Occupied Housing Units	2,329 58.5%	18,721 61.3%	38,345 56.0%
2024 Renter Occupied Housing Units	1,405 35.3%	9,717 31.8%	23,945 34.9%
EDUCATION			
2024 Population 25 and Over	6,048	47,503	103,213
HS and Associates Degrees	4,609 76.2%	31,304 65.9%	66,032 64.0%
Bachelor's Degree or Higher	940 15.5%	11,508 24.2%	26,306 25.5%
PLACE OF WORK			
2024 Businesses	340	1,710	5,241
2024 Employees	4,405	30,138	85,001



Contact Us

Karen Walsh

Senior Vice President

+1 815 218 3438

Karen.Walsh@cbre.com

© 2025 CBRE, Inc. All rights reserved. This information has been obtained from sources believed reliable, but has not been verified for accuracy or completeness. You should conduct a careful, independent investigation of the property and verify all information. Any reliance on this information is solely at your own risk. CBRE and the CBRE logo are service marks of CBRE, Inc. All other marks displayed on this document are the property of their respective owners, and the use of such logos does not imply any affiliation with or endorsement of CBRE. Photos herein are the property of their respective owners. Use of these images without the express written consent of the owner is prohibited.

