

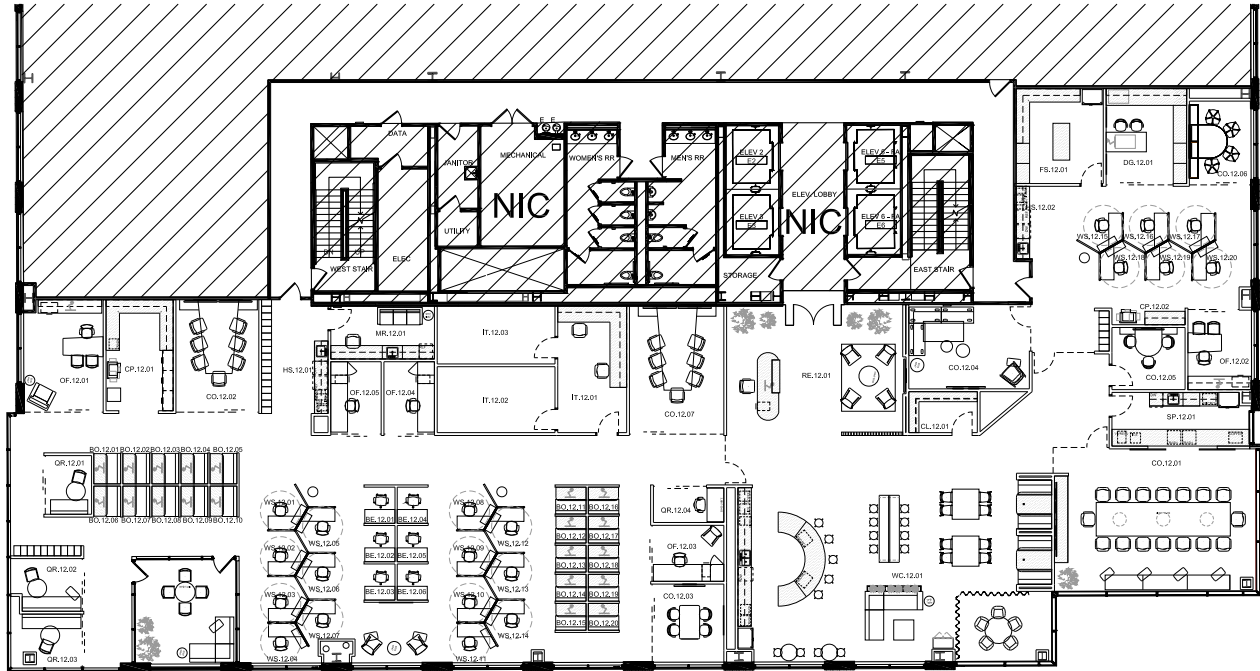
46 Penn Centre

4622 Pennsylvania Avenue, Suite 1200

Kansas City, MO 64112
www.cbre.com/KansasCity



Floor Plan



Property Details

Building: 46 Penn Centre | Suite 1200

Premises: 12,451 SF

Term: 11/30/2029

Availability: 30 days following execution of a sublease agreement and master landlord consent.

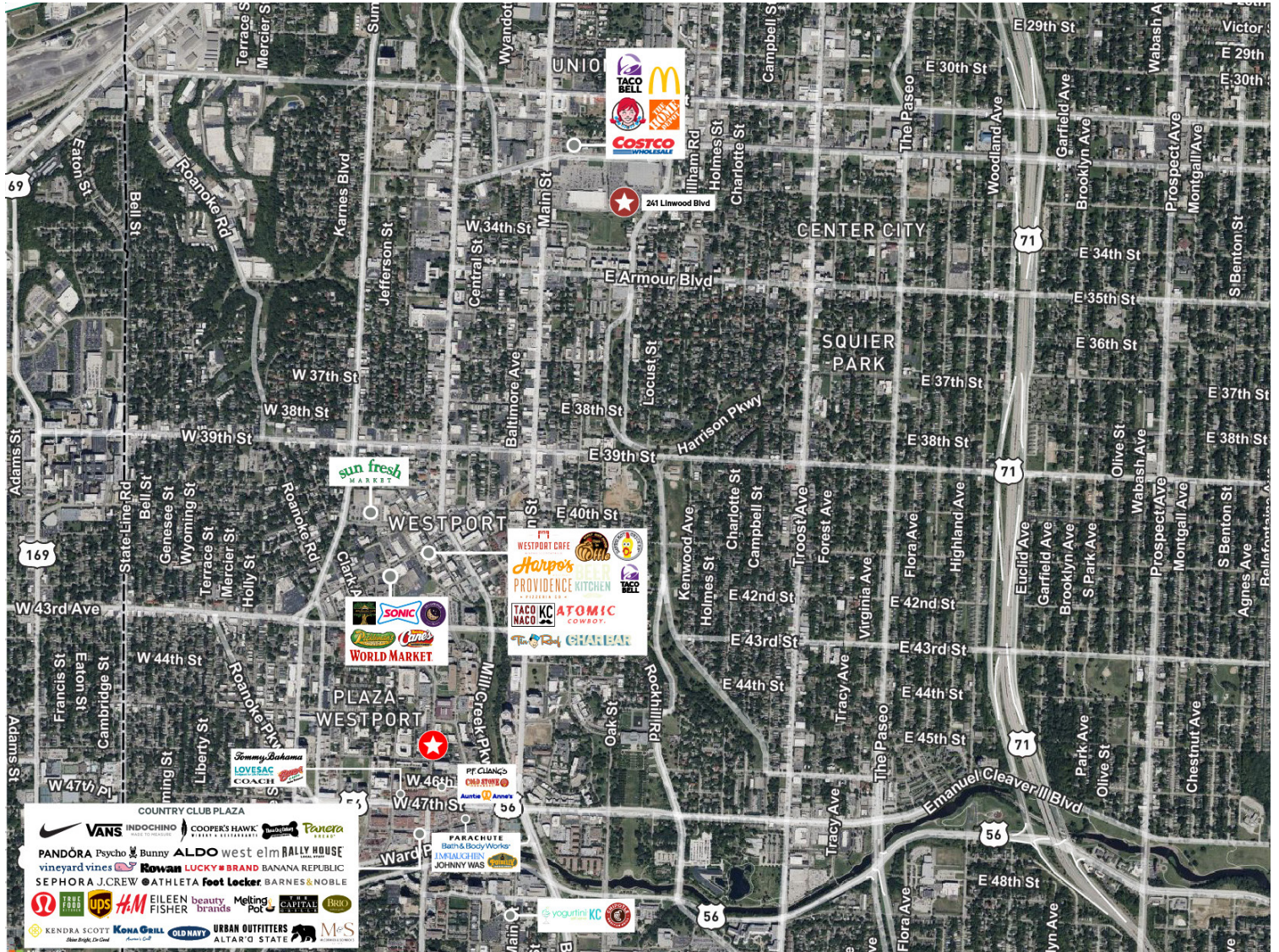
Furniture: Use of the existing fixtures, furniture and equipment is negotiable.

Space Condition: Class A modern finishes. Move-in ready condition.



Interior Photos





Contact Us



Rollie Fors
Senior Vice President
+1 913 205 5205
rollie.fors@cbre.com

© 2026 CBRE, Inc. All rights reserved. This information has been obtained from sources believed reliable, but has not been verified for accuracy or completeness. You should conduct a careful, independent investigation of the property and verify all information. Any reliance on this information is solely at your own risk. CBRE and the CBRE logo are service marks of CBRE, Inc. All other marks displayed on this document are the property of their respective owners, and the use of such logos does not imply any affiliation with or endorsement of CBRE. Photos herein are the property of their respective owners. Use of these images without the express written consent of the owner is prohibited.