

DISCOVER | EDINA



EDINA | DEMOGRAPHICS



Highly visible location with outstanding opportunity for maximum brand exposure.

51,651
PERMANENT
POPULATION

74,769
DAYTIME
POPULATION

75%
HOME
OWNERSHIP

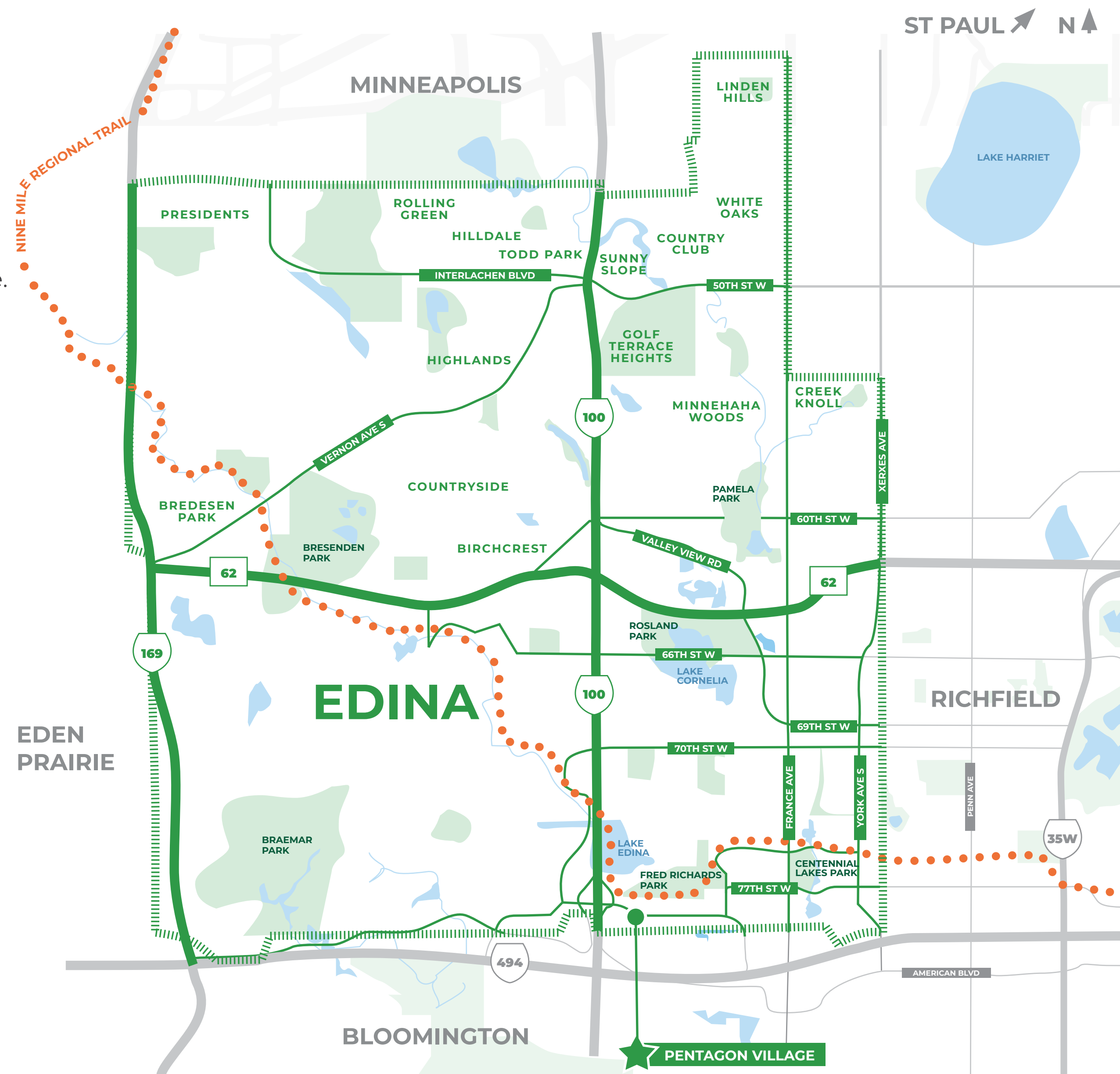
\$600,786
AVERAGE
HOME VALUE

\$120,465
AVGERAGE
HH INCOME

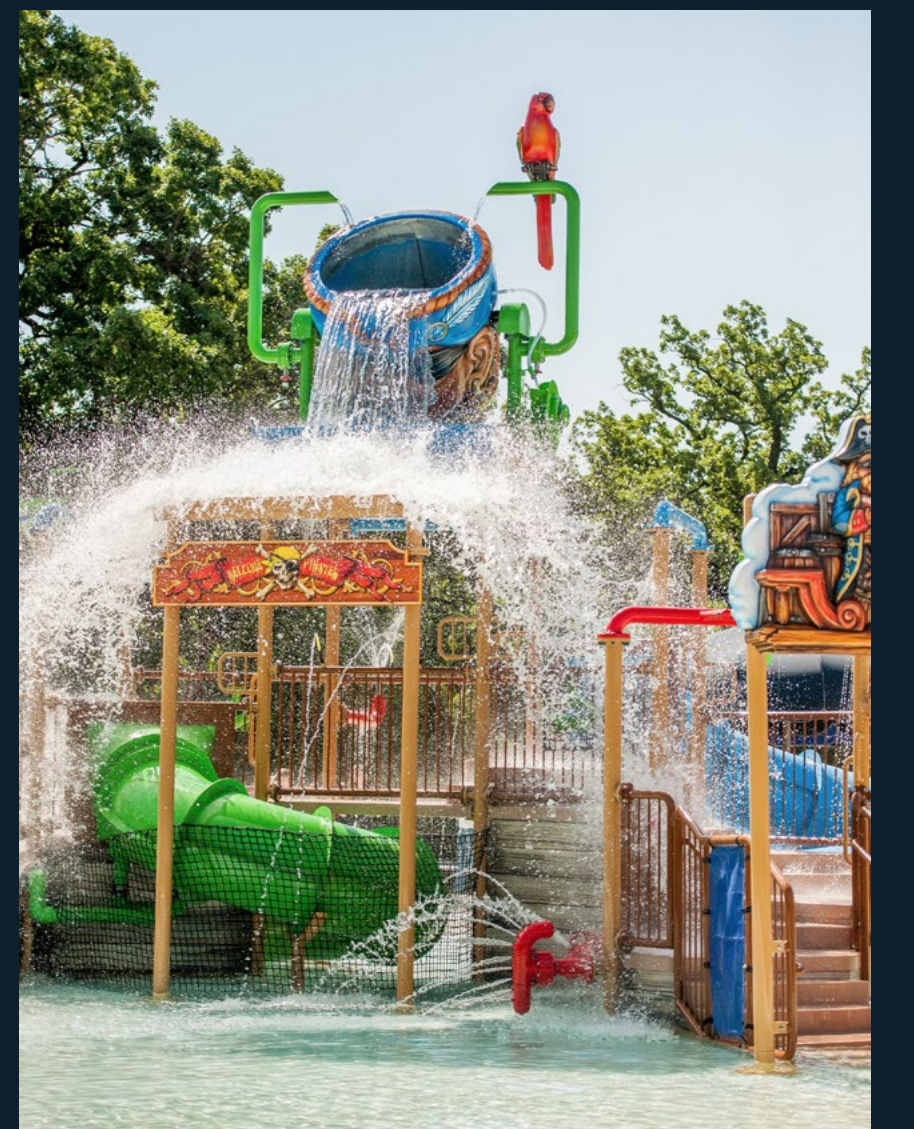
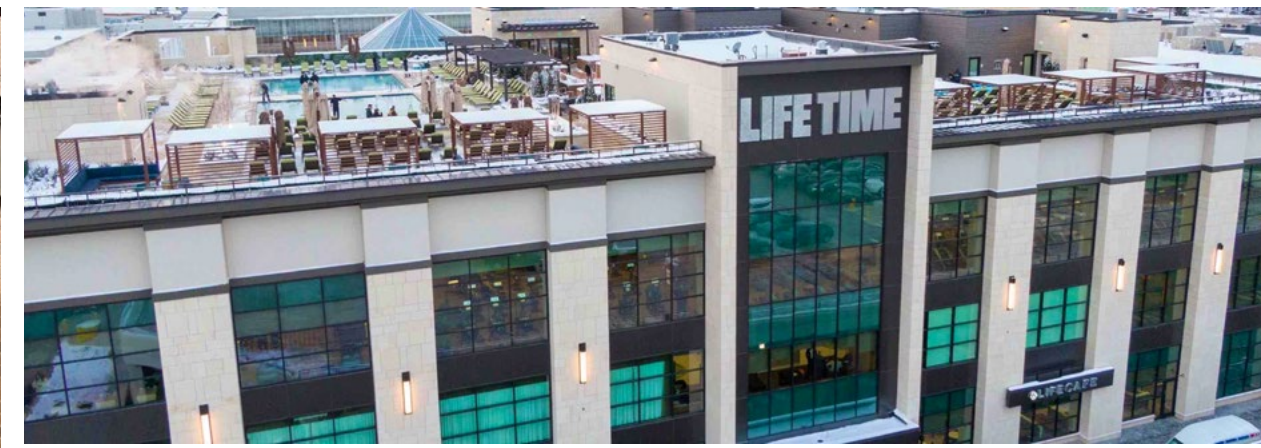
#3
MN SCHOOL
DISTRICT

96%
GRADUATION
RATE

69.7%
BACHELORS
DEGREE +

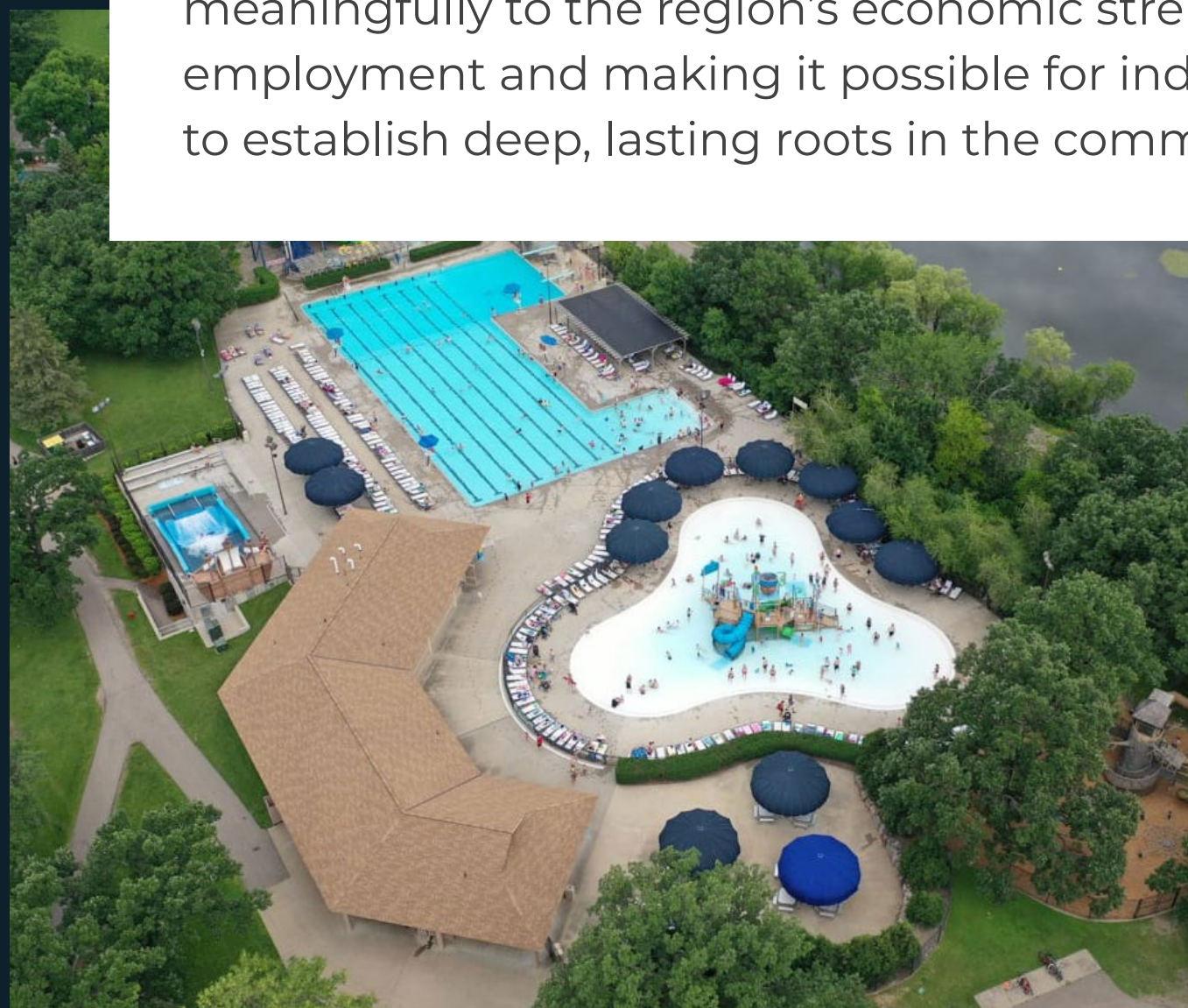
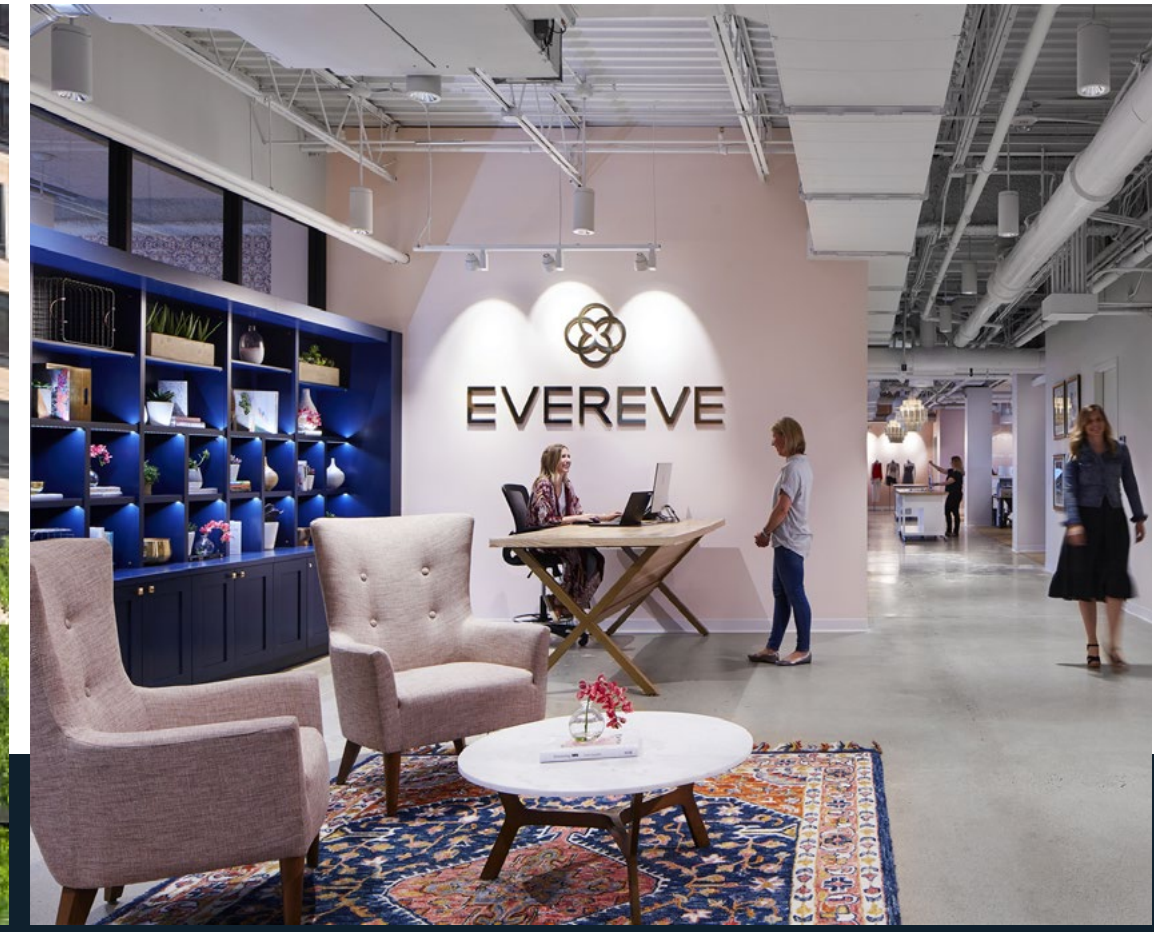


EDINA | AMENITIES



EDINA | HIGHLIGHTS

The city is distinguished by its exceptional public services, including expansive parks and recreation programs, dedicated police and fire departments, efficient public works, and a highly regarded school district. With parks encompassing over 1,500 acres, residents enjoy a wealth of outdoor spaces that foster community and well-being. The Chamber of Commerce serves as a dynamic business hub, representing nearly 400 members and more than 4,000 companies. The presence of major corporate headquarters—such as UnitedHealth Group, Edina Realty, Toro, Best Buy, and Evereve—within and around the area contributes meaningfully to the region’s economic strength, offering stable employment and making it possible for individuals and families to establish deep, lasting roots in the community.



EDINA | PARKS & RECREATION

Fred Richards Park and the 15+ mile Nine Mile Creek Regional Trail together form a vital recreational corridor in Edina, offering residents a serene natural escape and a gateway to active living. The park's expansive green space invites leisurely strolls, family gatherings, and community events, while the regional trail provides seamless bicycle access through Edina and into the broader Twin Cities metro. This connection not only enhances mobility and sustainability but also strengthens Edina's appeal as a place where outdoor lifestyle and urban accessibility harmoniously coexist.

Meaningful bike facilities support employees and visitors with secure indoor bike storage, showers, lockers and a fix-it station.

Beyond this trail system, Edina's parks and recreation amenities are remarkably diverse. Centennial Lakes Park is a beloved destination featuring paddleboats, putting greens, and outdoor concerts in the summer, with ice skating in the winter. Braemar Park is home to one of the region's premier golf courses and a state-of-the-art golf dome, while Braemar Arena supports Edina's storied hockey tradition with multiple indoor and outdoor rinks. Families flock to the Edina Aquatic Center for its surf simulator and zip line, and Edinborough Park offers year-round indoor play at Adventure Peak—one of the Twin Cities' top-rated indoor playgrounds.

With more than 40 parks and 1,500 acres of open space, Edina's commitment to recreation is evident in every corner of the city. Whether it's walking through Bredesen Park, attending art classes at the Edina Art Center, or enjoying community events at Rosland Park, residents have access to a rich tapestry of outdoor and cultural experiences that elevate quality of life and foster a strong sense of community.



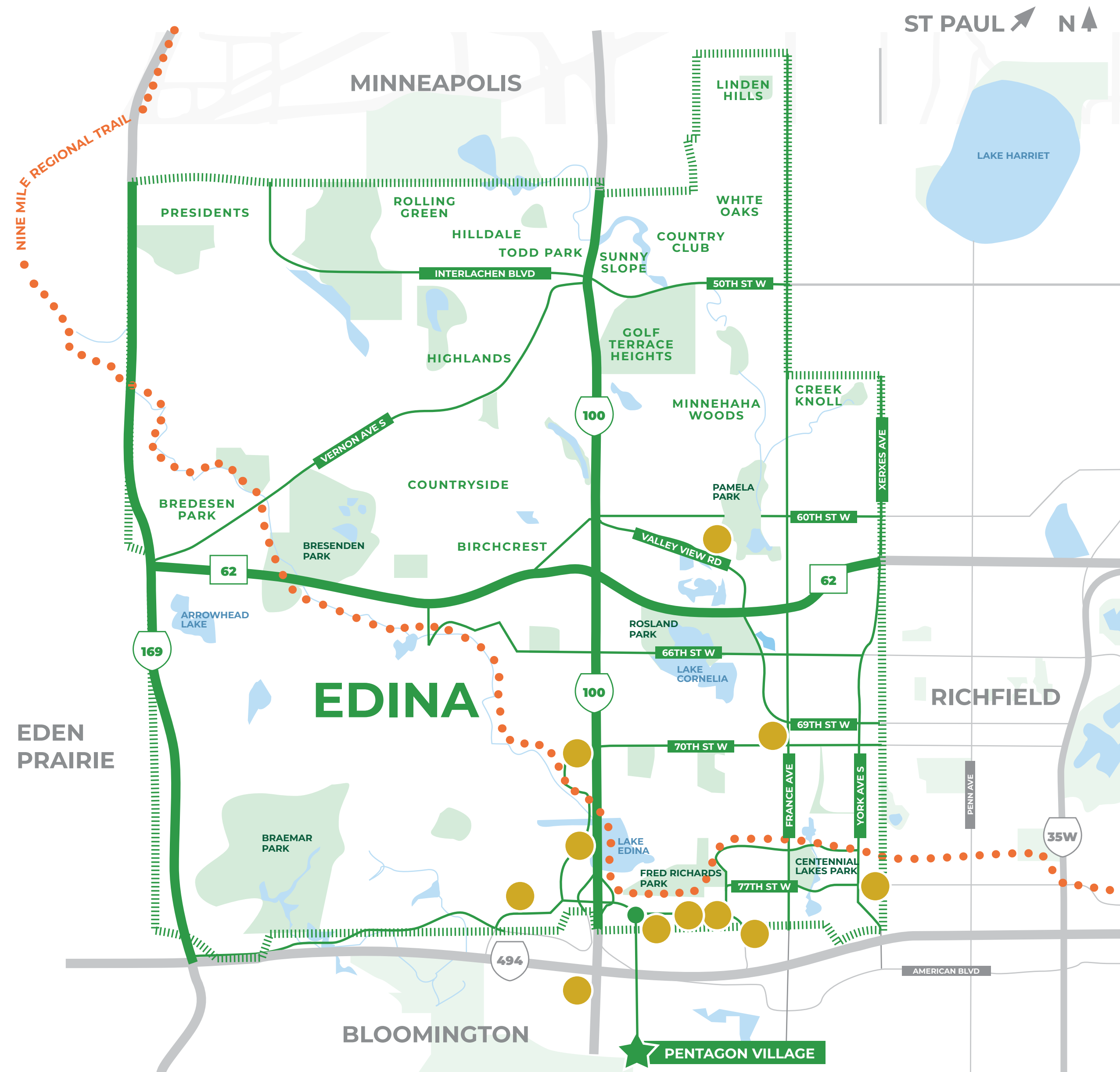
EDINA | AREA EMPLOYERS



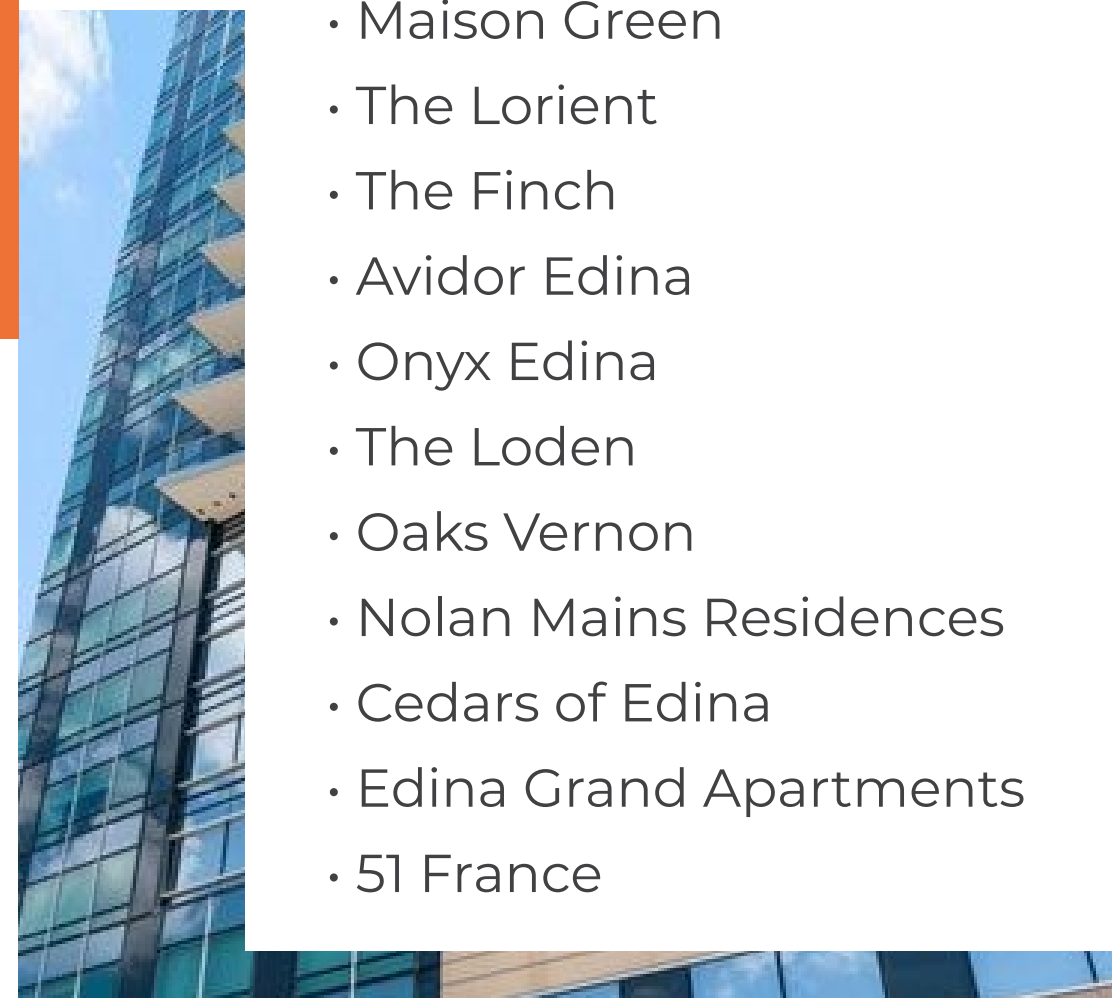
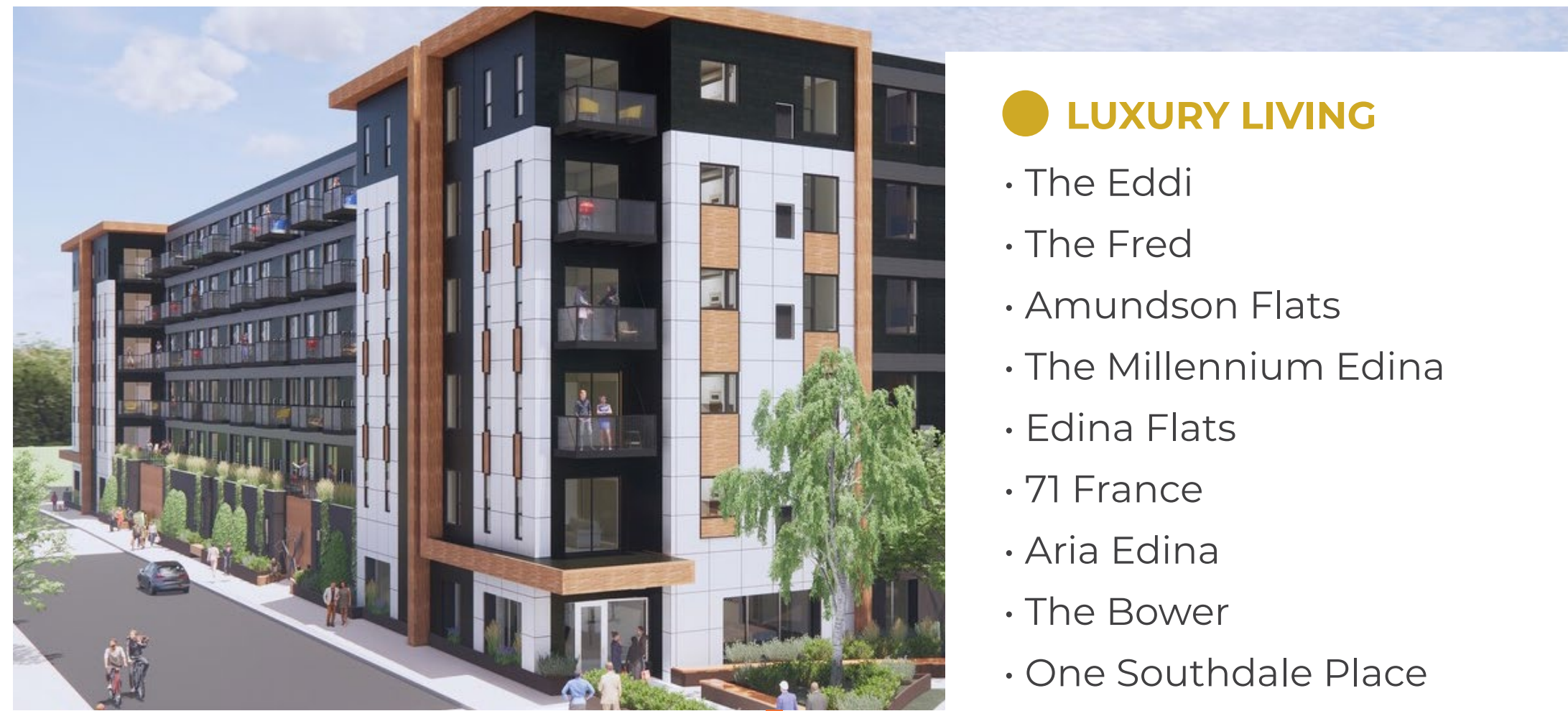
EDINA | CHILDCARE

DAYCARE & EARLY LEARNING CENTERS

- Kiddie Academy of Edina
- New Hope Learning Center
- The Gardner School of Edina
- The Cradle Club
- Mother Goose Inn
- Kinderplatz
- New Horizon Academy
- New Horizon Academy
- Especially for Children
- Edina Daycare
- Primrose School of Edina
- Kinderberry Hill

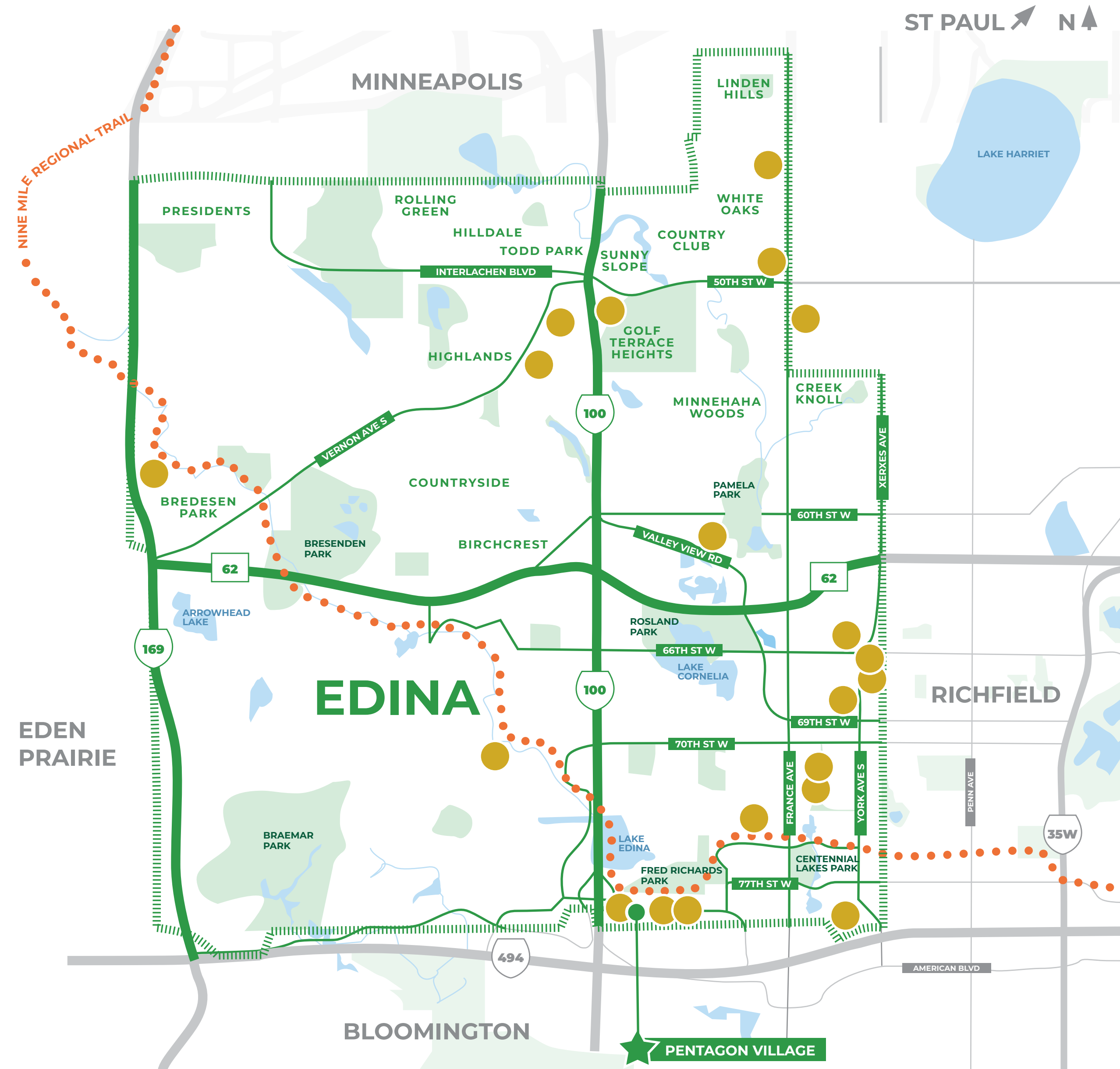


EDINA | MULTIFAMILY



LUXURY LIVING

- The Eddi
- The Fred
- Amundson Flats
- The Millennium Edina
- Edina Flats
- 71 France
- Aria Edina
- The Bower
- One Southdale Place
- Maison Green
- The Lorient
- The Finch
- Avidor Edina
- Onyx Edina
- The Loden
- Oaks Vernon
- Nolan Mains Residences
- Cedars of Edina
- Edina Grand Apartments
- 51 France



EDINA | PENTAGON VILLAGE



PARKING RAMP

- 423 parking stalls
- Three levels
- Ability to expand to 861 stalls on six levels
- Electric vehicle (EV) charging stations
- Infrastructure to add EV parking as needed.
- Two well-lit stair and elevator towers

THE PLAZA

Village Plaza features an urban park setting with lush landscaping, water features and public art sculptures from local artist James Brenner. The neighborhood is highly walkable and offers endless options for entertainment, access to nature and transportation.

OFFICE

Class A office, strategically designed with productivity, collaboration and wellness at its core. The building contains all the amenities the energized employee is seeking in their workplace - fitness center, bike storage, and direct connections to the regional trail system, as well as Fred Richards Park.

RETAIL





CONTACT

Michael Gelfman

+1 952 897 7875

michael.gelfman@colliers.com

Kevin O'neill

+1 952 897 7724

kevin.oneill@colliers.com

Nathan Karrick

+1 952 897 7722

nathan.karrick@colliers.com