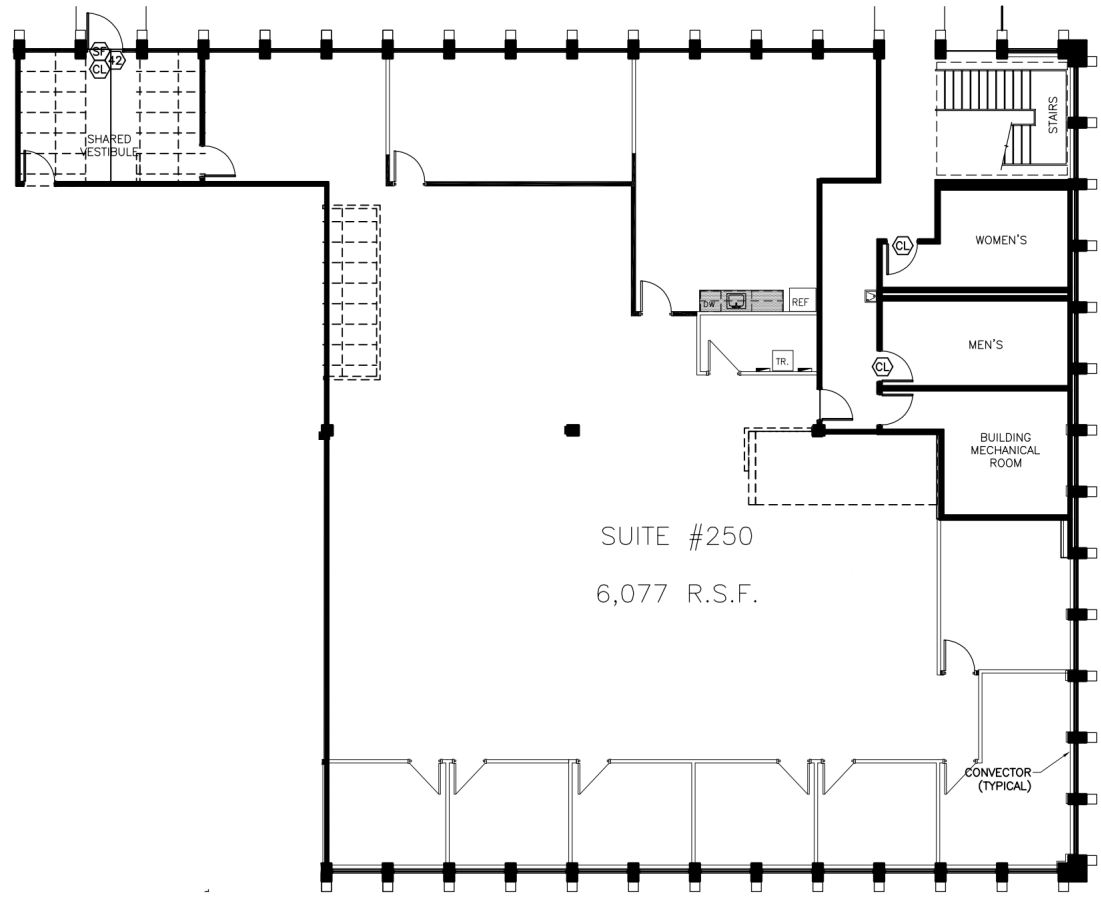


# SUITE 250 | 6,077 SF

280 Shuman Blvd \ Naperville, IL



## SPACE NOTES

- Move-in Ready Suite
- 7 Private Offices
- Conference Room
- Kitchen
- Open Space for Workstations
- Can be Combined with Suite 240 (4,325 SF) for up to 10,402 SF



**RYAN MOEN, SIOR**  
630.480.6346  
[RMoen@VersaRES.com](mailto:RMoen@VersaRES.com)

**JOHN MILLNER, CCIM**  
630.480.6342  
[JMillner@VersaRES.com](mailto:JMillner@VersaRES.com)

**TOBY GARDNER**  
630.480.6017  
[TGardner@VersaRES.com](mailto:TGardner@VersaRES.com)

1 MID AMERICA PLAZA, 3RD FLOOR  
OAKBROOK TERRACE, IL 60181  
630.480.6413

EXCLUSIVELY LISTED BY  
**VERSA**  
REAL ESTATE SERVICES