

CLASS A WAREHOUSE | FOR LEASE



161,280 - 201,637 SF AVAILABLE
NEW CONSTRUCTION

O.C. TANNER DISTRIBUTION CENTER

1509 SOUTH GUSTIN ROAD | SALT LAKE CITY, UTAH 84104

CBRE

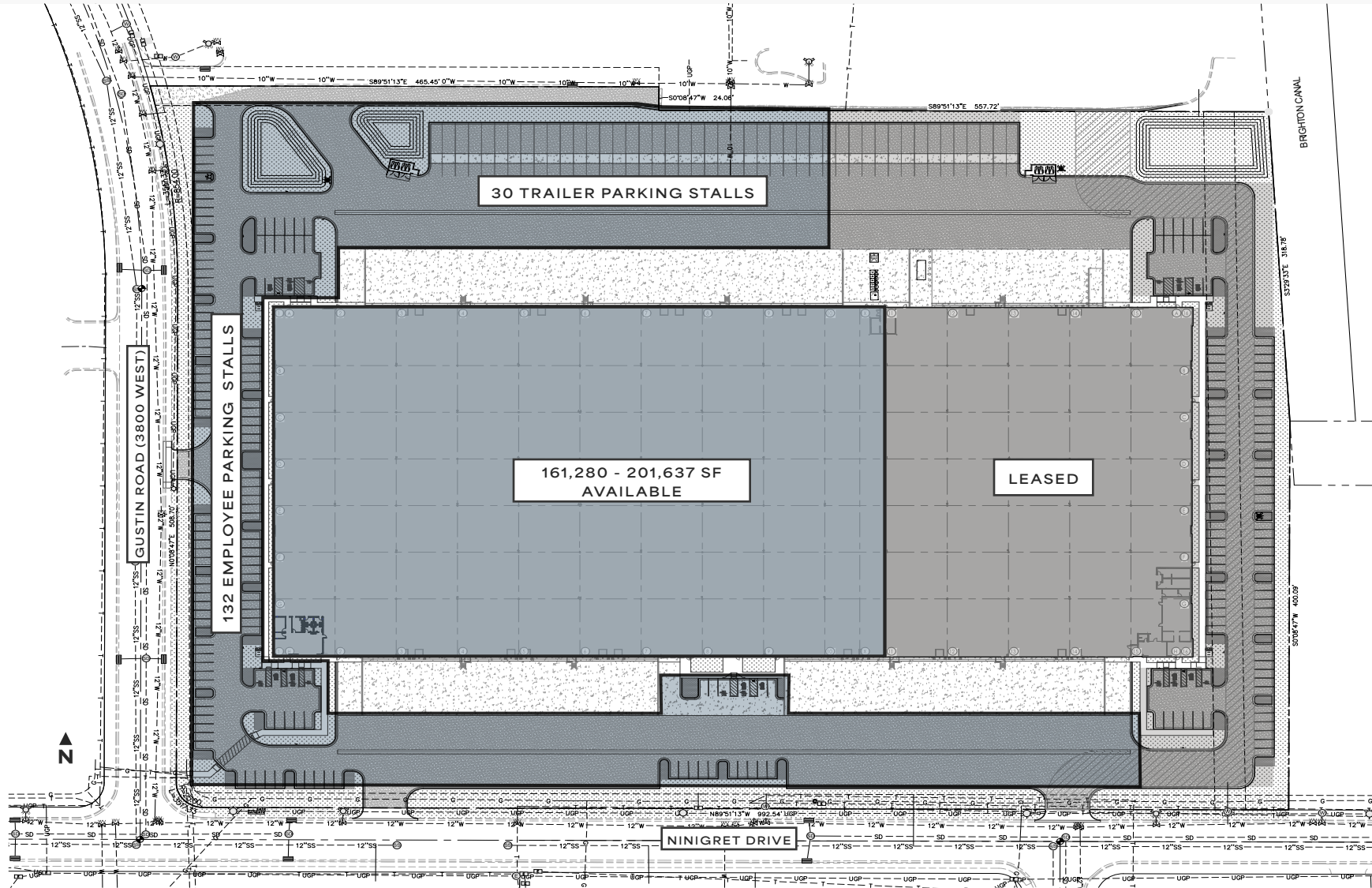


BUILDING HIGHLIGHTS

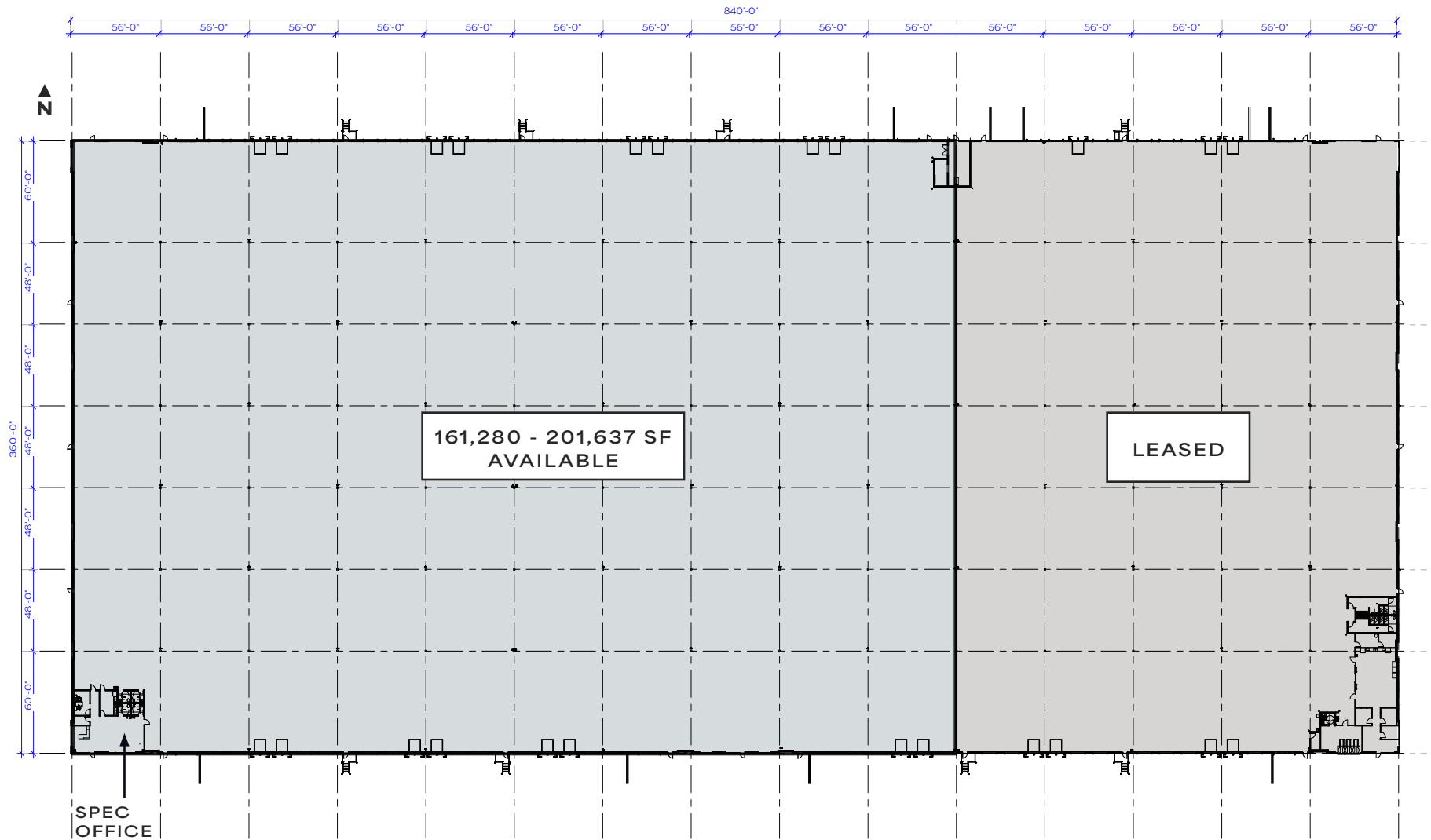
CROSS DOCK CONFIGURATION

BUILDING SIZE:	302,360 SQ. FT.
AVAILABLE:	161,280 - 201,637 SQ. FT.
SPEC OFFICE:	1,710 SQ. FT.
DIMENSIONS:	840' W x 360' D
COLUMN SPACING:	56' x 48' (60' SPEED BAYS)
CLEAR HEIGHT:	36'
POWER:	1600 AMPS , 480 VOLT, 3-PHASE
FIRE SUPPRESSION:	ESFR
LIGHTING:	LED
FLOOR SLAB:	7"
DOCK HIGH DOORS:	51 (16 W/ LEVELERS & SEALS)
GRADE LEVEL DOORS:	4
CONSTRUCTION TYPE:	CONCRETE TILT
TRAILER PARKING:	30 STALLS FOR VACANT UNITS (45 STALLS TOTAL)
EMPLOYEE PARKING:	132 STALLS FOR VACANT UNITS (230 STALLS TOTAL)
ZONING:	M-1

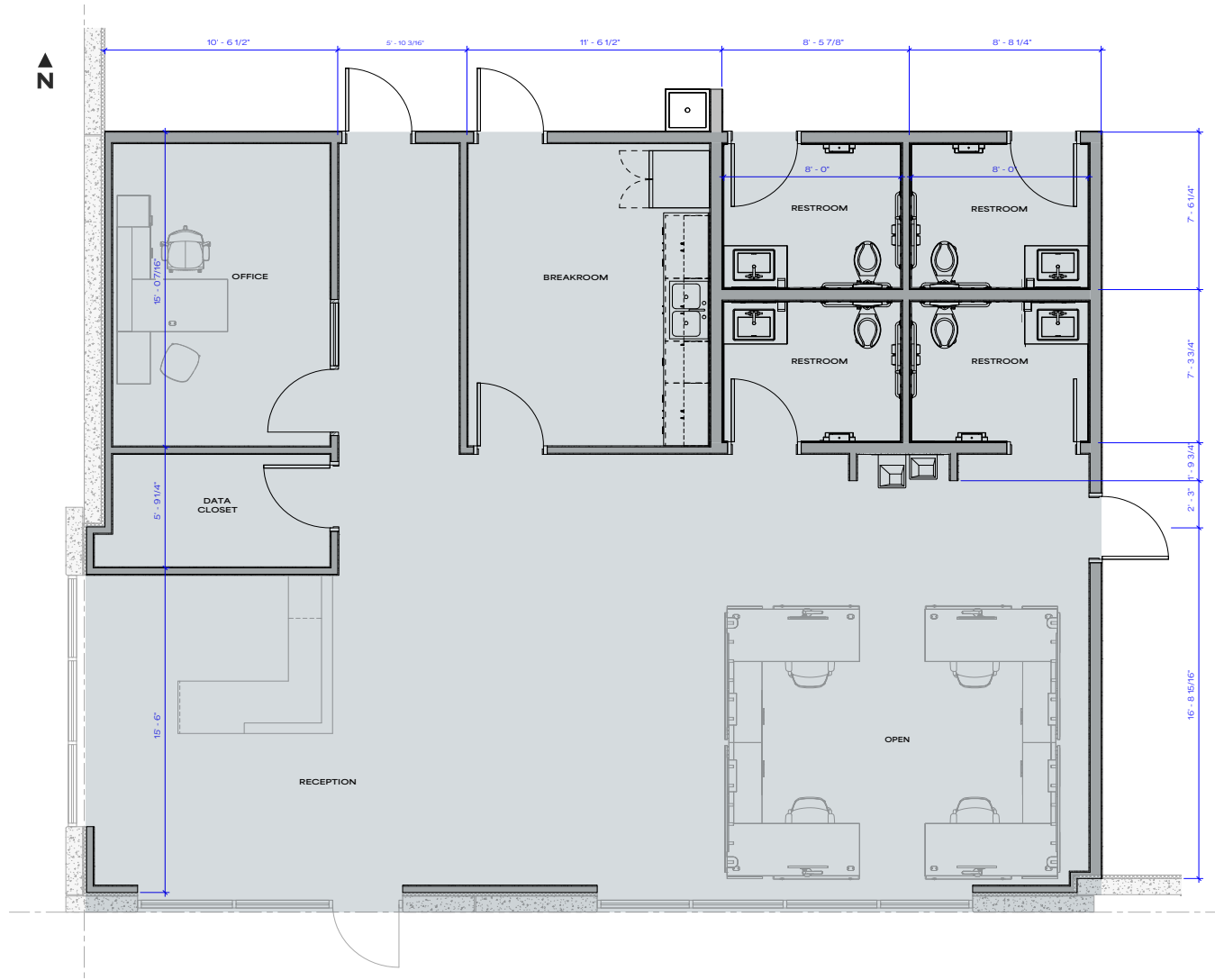
SITE PLAN



FLOOR PLAN



OFFICE PLAN



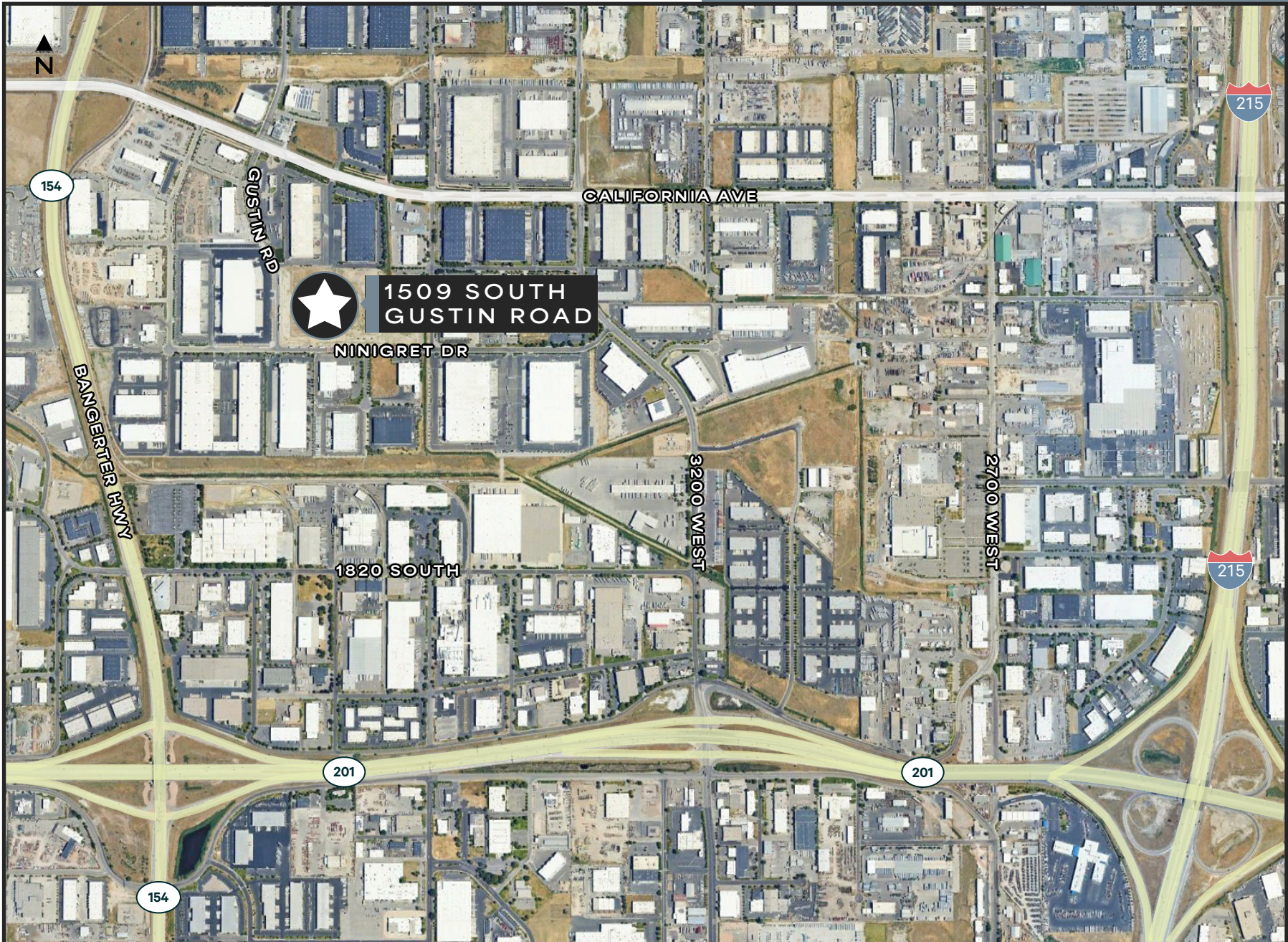


LOCATION HIGHLIGHTS

5 MIN.
TO SALT LAKE
INT'L AIRPORT

8 MIN.
TO UNION PACIFIC
INTERMODAL HUB

12 MIN.
TO DOWNTOWN
SALT LAKE



**1509 SOUTH
GUSTIN ROAD**

NINIGRET DR

1820 SOUTH

3200 WEST

2700 WEST

CALIFORNIA AVE

GUSTIN RD

BANGERTER HWY

154

201

201

154

215

215





O.C. TANNER DISTRIBUTION CENTER

1509 SOUTH GUSTIN ROAD | SALT LAKE CITY, UTAH 84104

MATT MCAFEE

Senior Vice President
+1 801 869 8023
matt.mcafee@cbre.com

CHRIS LIDDELL

Senior Vice President
+1 801 869 8007
chris.liddell@cbre.com

TOM DISCHMANN

Executive Vice President
+1 801 243 9411
tom.dischmann@cbre.com

JEFF RICHARDS

Executive Vice President
+1 801 869 8026
jeff.richards@cbre.com

CBRE

© 2026 CBRE, Inc. All rights reserved. This information has been obtained from sources believed reliable but has not been verified for accuracy or completeness. CBRE, Inc. makes no guarantee, representation or warranty and accepts no responsibility or liability as to the accuracy, completeness, or reliability of the information contained herein. You should conduct a careful, independent investigation of the property and verify all information. Any reliance on this information is solely at your own risk.