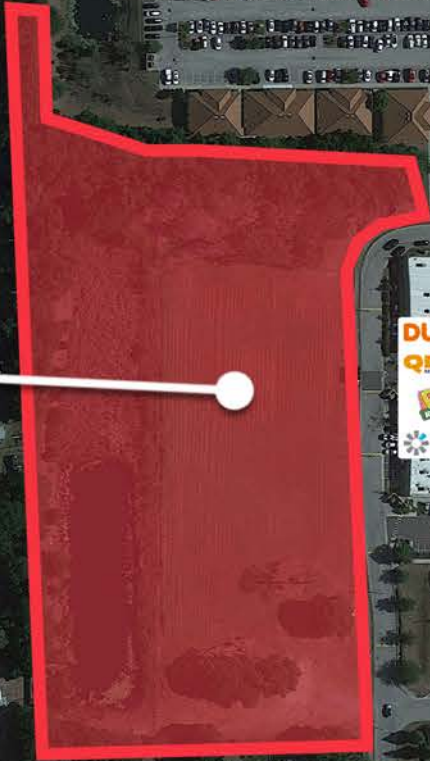


SITE



51,500 VPD

39,500 VPD

Big Bend Rd



FOR SALE

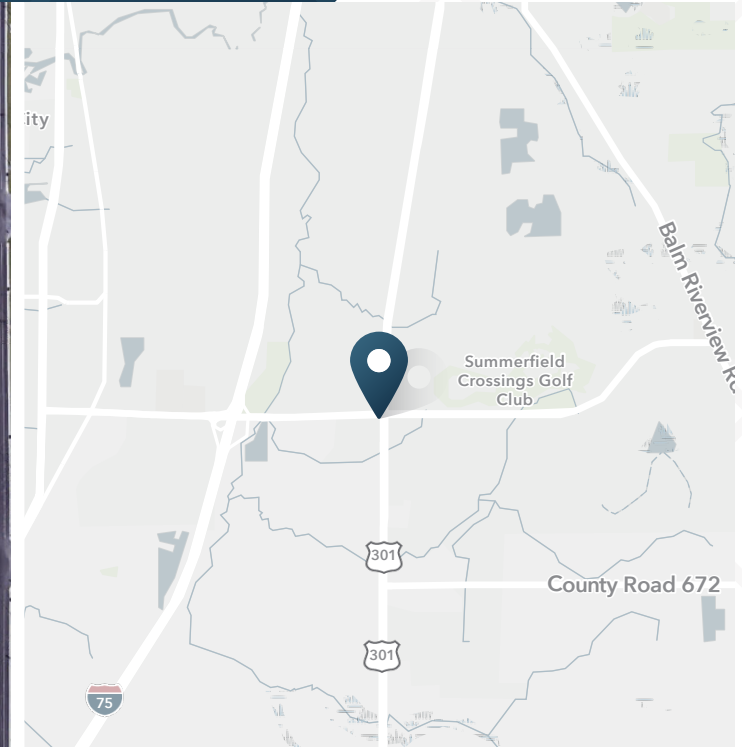
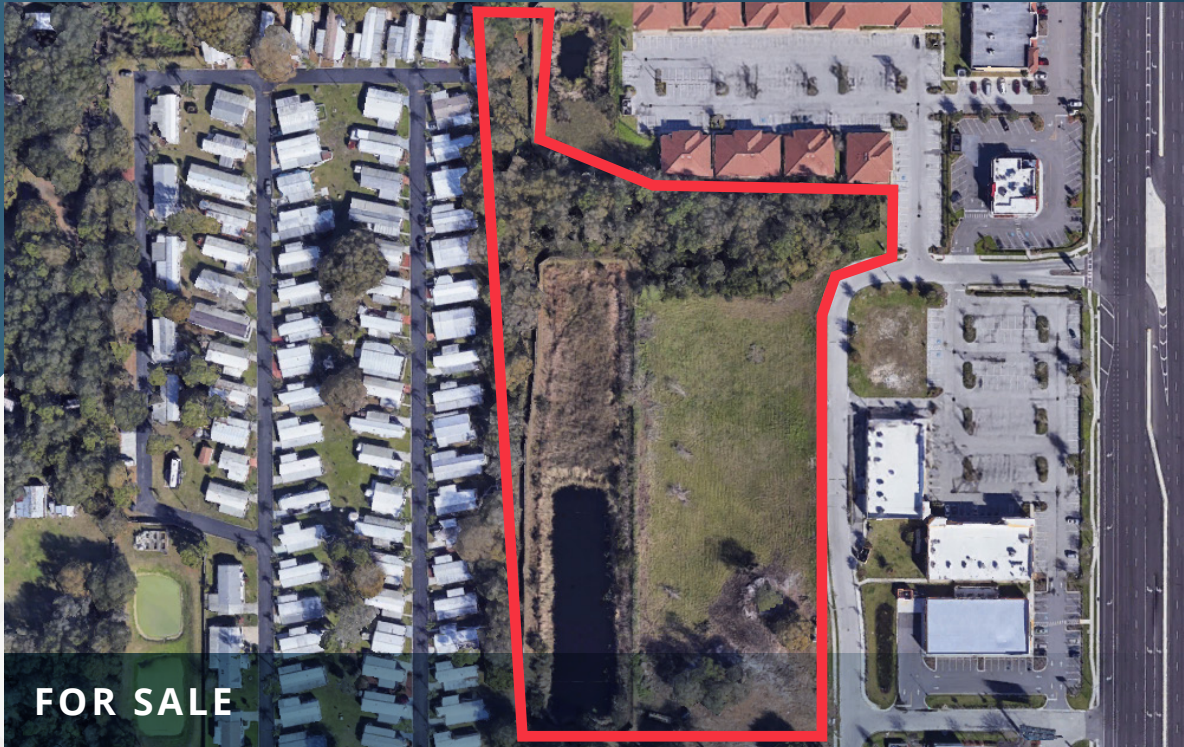
Summerfield Square Retail Outparcel

U.S. 301 & Big Bend Road | Riverview, FL 33678



Summerfield Square Retail Outparcel

U.S. 301 & Big Bend Road | Riverview, FL 33578



8 Acres
Available

Contact
Broker
Rate

ABOUT THE PROPERTY

- 8 acres behind the Summerfield Square Professional Center
- Green space

NEARBY RETAILERS

Marshalls



SPROUTS
FARMERS MARKET

Walmart

Publix

TRAFFIC COUNTS

Big Bend Road
U.S. 301

39,500 VPD
51,500 VPD

Year: 2025 | Source: FDOT



Summerfield Square Retail Outparcel

U.S. 301 & Big Bend Road | Riverview, FL 33578



DEMOGRAPHIC HIGHLIGHTS

1 MILE

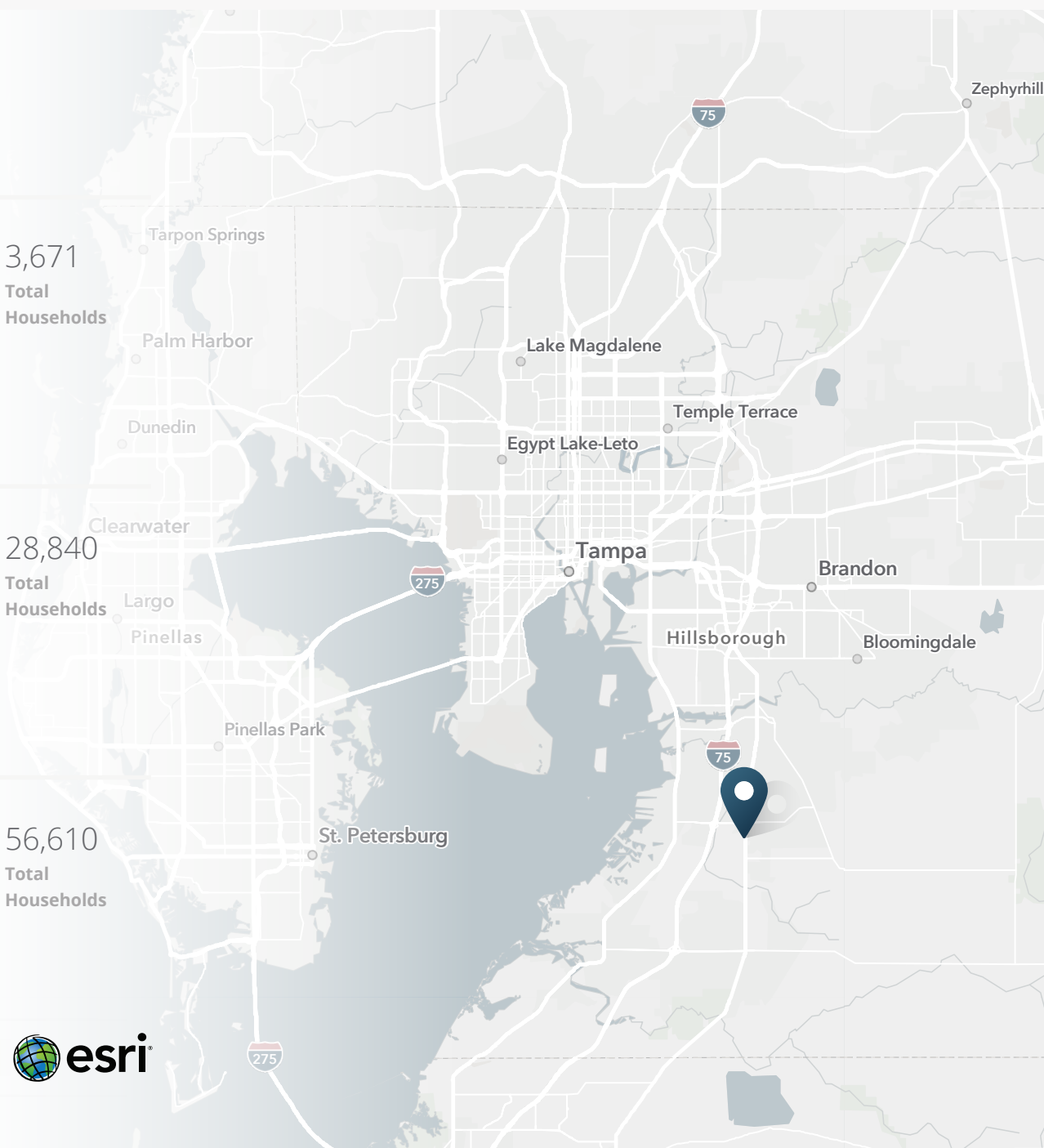
10,544 Population	10,326 Total Daytime Population	\$118,233 Average Household Income	3,671 Total Households
----------------------	---------------------------------------	--	------------------------------

3 MILES

88,726 Population	59,787 Total Daytime Population	\$125,613 Average Household Income	28,840 Total Households
----------------------	---------------------------------------	--	-------------------------------

5 MILES

164,565 Population	117,926 Total Daytime Population	\$123,290 Average Household Income	56,610 Total Households
-----------------------	--	--	-------------------------------



> **Want more?** Contact us for a complete demographic, foot-traffic, and mobile data insights report.





SRS Real Estate Partners
1501 W. Cleveland St, Suite 300
Tampa, FL 33606
813.371.0980

Chris Stewart
813.760.8897
chris.stewart@srsre.com

SRSRE.COM

©2025 SRS Real Estate Partners LLC. All Rights Reserved.

The information presented was obtained from sources deemed reliable;
however SRS Real Estate Partners does not guarantee its completeness or accuracy.