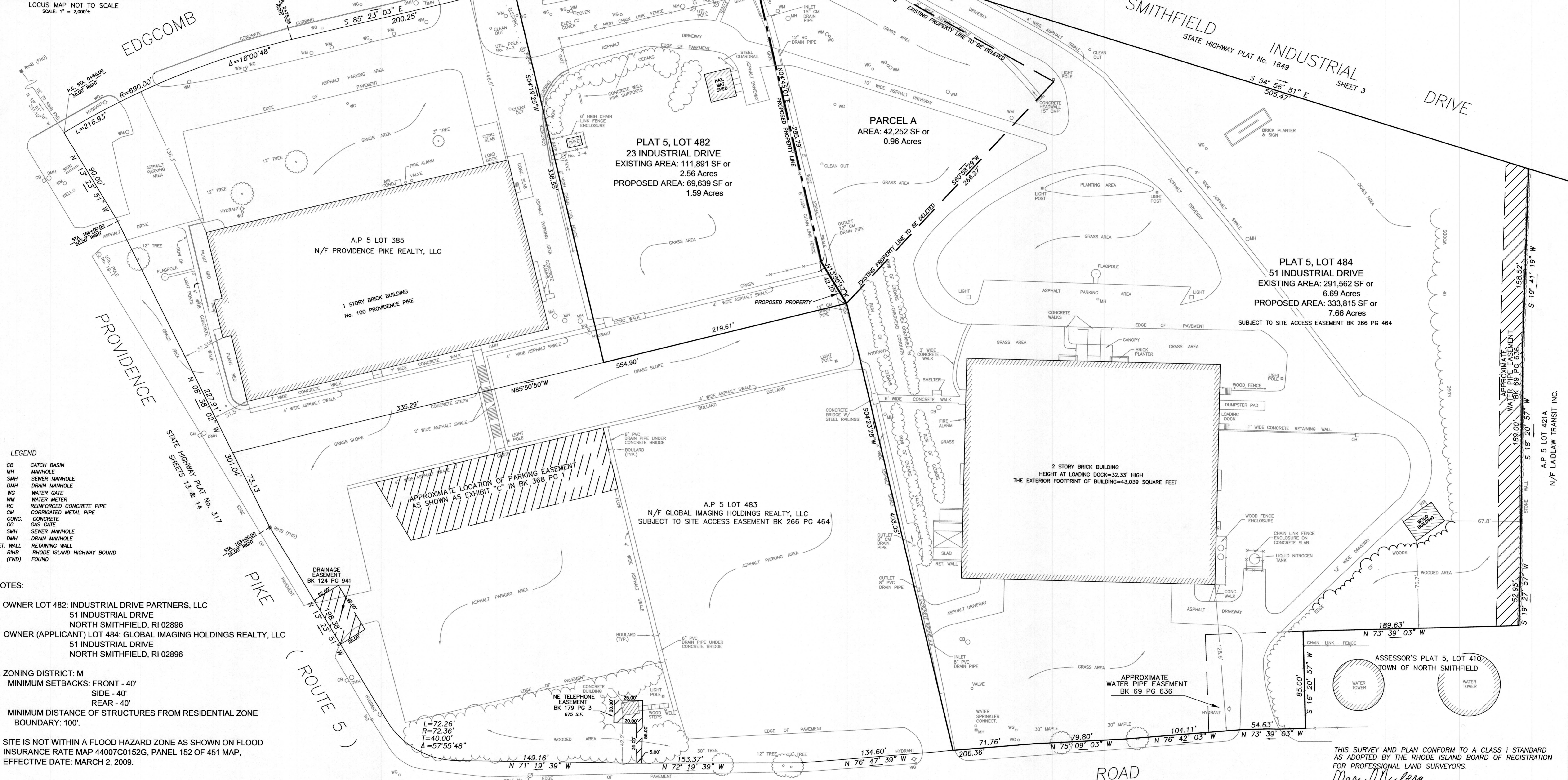
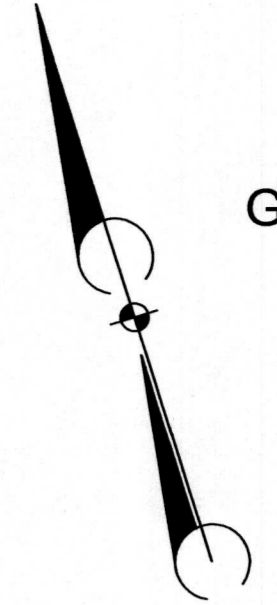
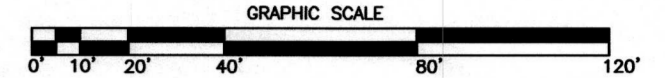


ADMINISTRATIVE SUBDIVISION
FOR
GLOBAL IMAGING HOLDINGS REALTY, LLC
ASSESSOR'S PLAT 5, LOTS 482 & 484
NORTH SMITHFIELD, RHODE ISLAND
FEBRUARY, 2017
REVISED: MAY 1, 2017
SCALE: 1"= 40'



- LEGEND**
- CB CATCH BASIN
 - MH MANHOLE
 - SMH SEWER MANHOLE
 - DMH DRAIN MANHOLE
 - WG WATER GATE
 - WM WATER METER
 - RC REINFORCED CONCRETE PIPE
 - CM CORRUGATED METAL PIPE
 - CONC. CONCRETE
 - GC GAS GATE
 - SMH SEWER MANHOLE
 - DMH DRAIN MANHOLE
 - RET. WALL RETAINING WALL
 - RIBD RHODE ISLAND HIGHWAY BOUND FOUND

- NOTES:**
- OWNER LOT 482: INDUSTRIAL DRIVE PARTNERS, LLC
51 INDUSTRIAL DRIVE
NORTH SMITHFIELD, RI 02896
 - OWNER (APPLICANT) LOT 484: GLOBAL IMAGING HOLDINGS REALTY, LLC
51 INDUSTRIAL DRIVE
NORTH SMITHFIELD, RI 02896
 - ZONING DISTRICT: M
MINIMUM SETBACKS: FRONT - 40'
SIDE - 40'
REAR - 40'
MINIMUM DISTANCE OF STRUCTURES FROM RESIDENTIAL ZONE BOUNDARY: 100'
 - SITE IS NOT WITHIN A FLOOD HAZARD ZONE AS SHOWN ON FLOOD INSURANCE RATE MAP 44007C0152G, PANEL 152 OF 451 MAP, EFFECTIVE DATE: MARCH 2, 2009.

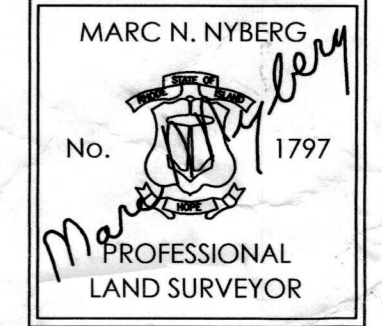
PLAN REFERENCES:

"PROPERTY OF AMPEREX ELECTRONIC CORPORATION
NORTH SMITHFIELD, R.I., JUNE, 1967, SCALE: 1 INCH
EQUALS 50 FEET" BY G. BERTRAND BIBEAULT, C.E.,
99 MAIN STREET, WOONSOCKET, R.I. 02895

"ALTA/ACSM LAND TITLE SURVEY FOR PHILLIPS ELECTRONIC CORP.
NORTH SMITHFIELD, R.I., MAY 24, 2000 REVISED FEBRUARY 26, 2004,
SCALE: 1"= 50 FEET" BY MARC N. NYBERG ASSOC. INC.
501 GREAT ROAD UNIT 104, NORTH SMITHFIELD, R.I., 02896"

THIS SURVEY AND PLAN CONFORM TO A CLASS 1 STANDARD AS ADOPTED BY THE RHODE ISLAND BOARD OF REGISTRATION FOR PROFESSIONAL LAND SURVEYORS.

Marc N. Nyberg
MARC N. NYBERG, PROFESSIONAL LAND SURVEYOR



MARC N. NYBERG ASSOCIATES, INC.
LAND SURVEYORS AND PLANNERS
501 GREAT ROAD UNIT 104
NORTH SMITHFIELD, RHODE ISLAND 02896
TEL. (401) 762-2870 FAX. (401) 762-2871