

ALPINE INDUSTRIAL PARK

8167-8175 ALPINE AVENUE | 4200-4300 82ND STREET SACRAMENTO, CA

1,820 – 4,145 SF AVAILABLE
ACCESS TO COMMON AREA LOADING DOCK !

8169 ALPINE

8175 ALPINE

4200 82ND

8167 ALPINE

4300 82ND

8171 ALPINE

NEWMARK

A PROPERTY OWNED BY:

RISING

MIKE SMITH
916.569.2352
mike.smith@nrmk.com
CA RE License #01504428

COLE CUMMINGS
916.569.2366
cole.cummings@nrmk.com
CA RE License #02106833

IRINA SHPYRKA
916.477.7384
irina.shpyrka@nrmk.com
CA RE License #02037207

PROPERTY HIGHLIGHTS



M-1 Zoning



16' - 18' Clear Heights



Excellent Access to Highway 50



Insulated Roof Decks



Access to Common Area Loading Dock



Building Signage Available



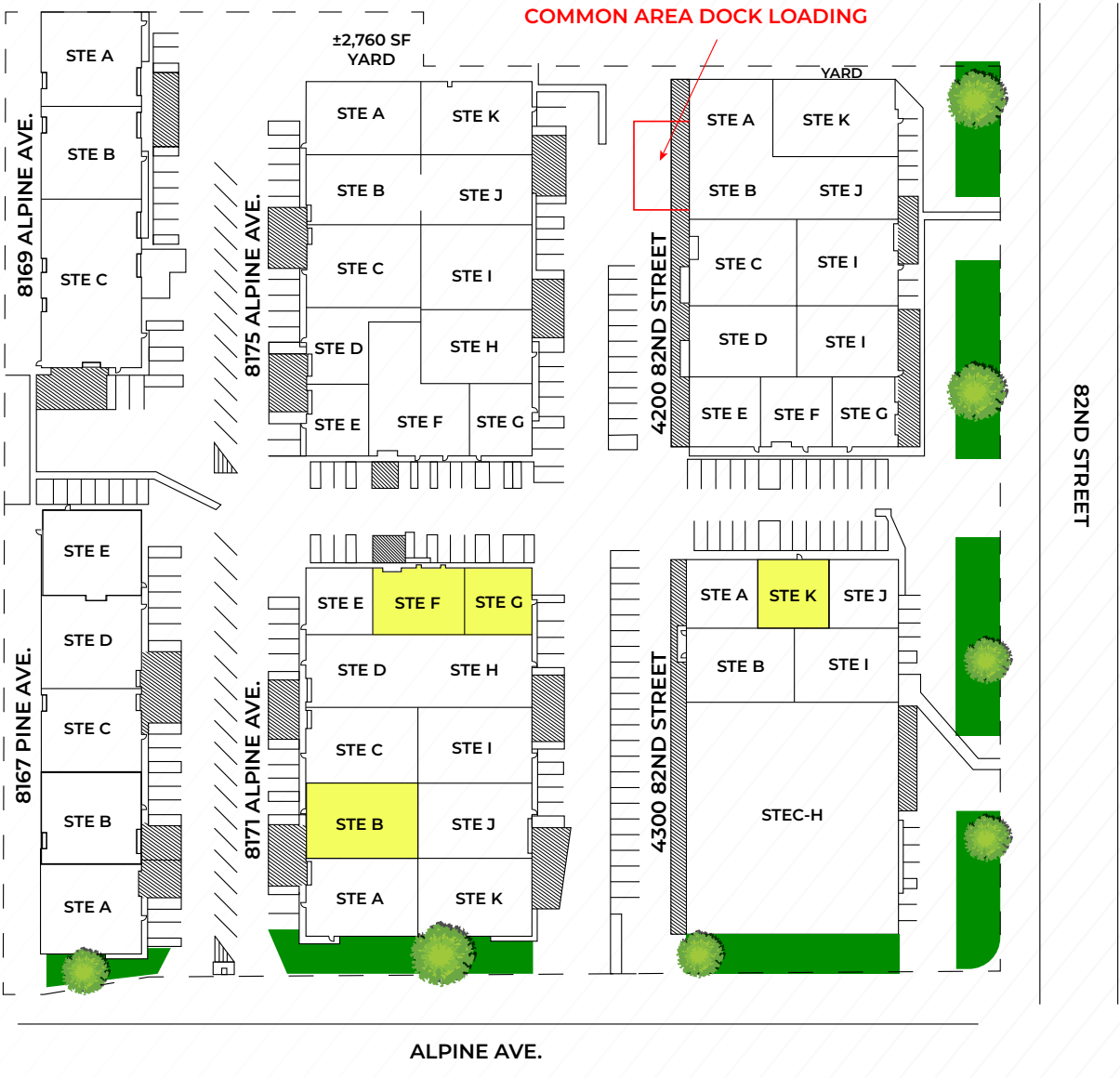
Ample Parking



Project Size -
±147,687 SF

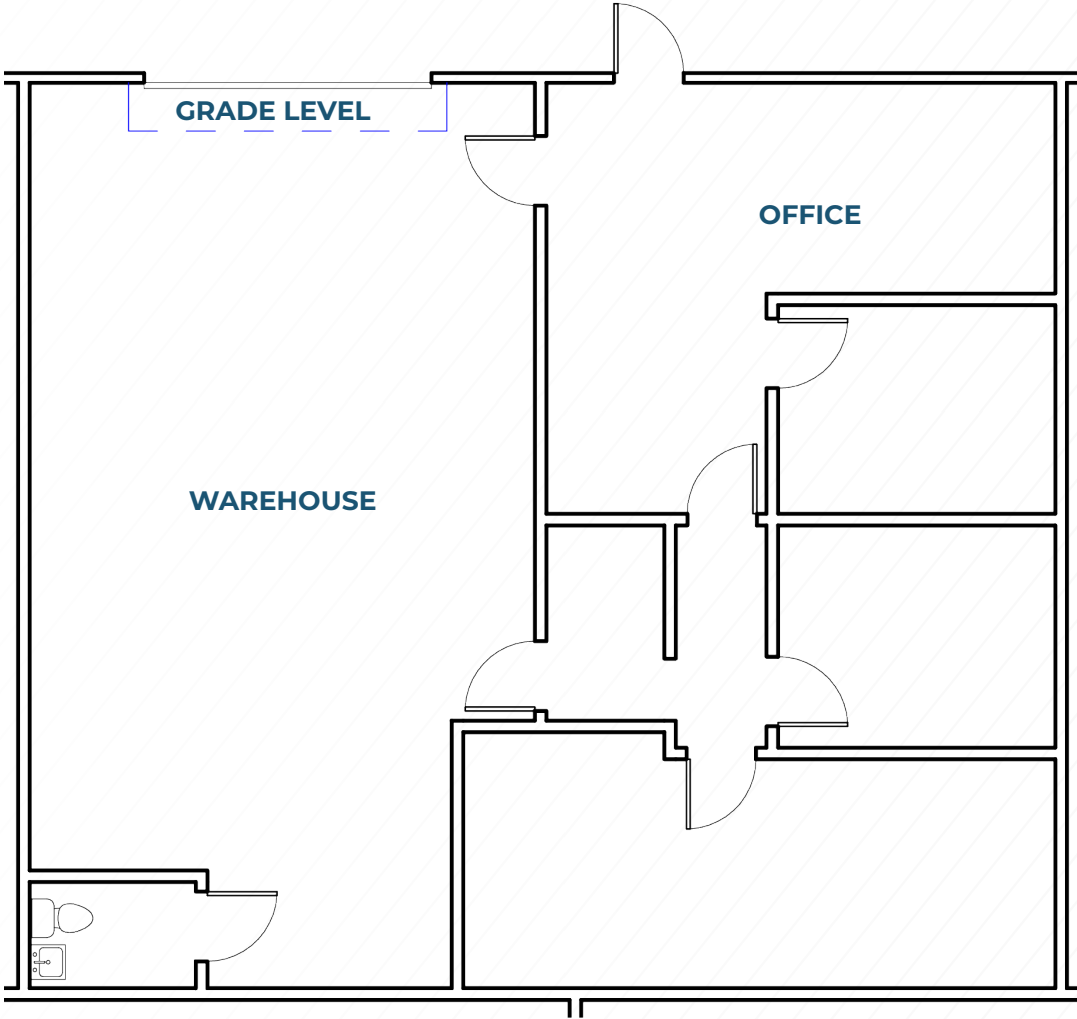


PROPERTY HIGHLIGHTS



CURRENT FLOOR PLAN 4300 82nd Street, Sacramento

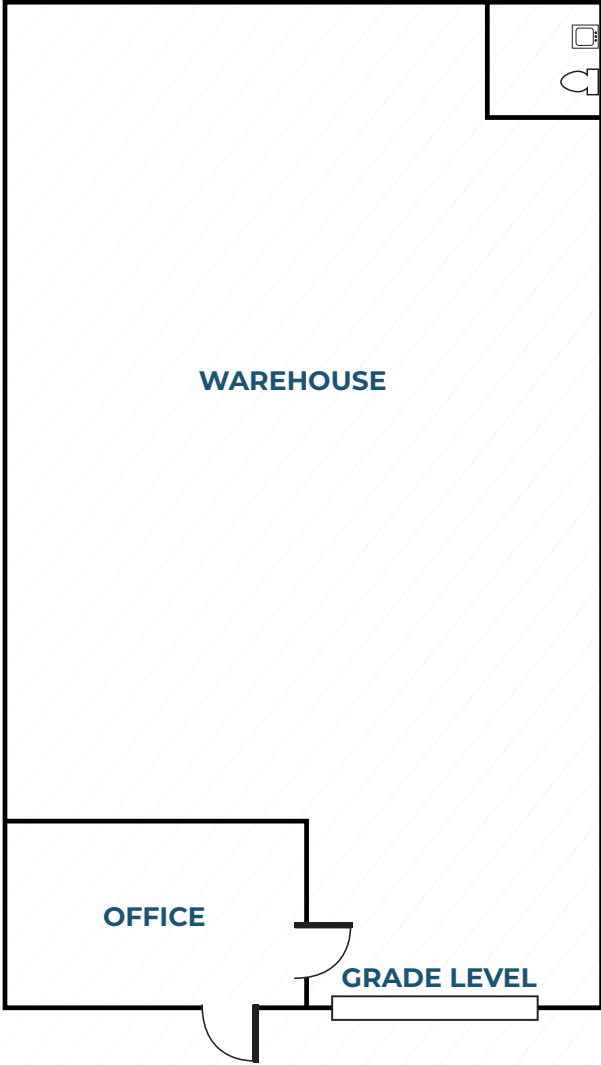
Suite K ±1,820 SF



Disclaimer: For Reference Only. Not To Scale

CURRENT FLOOR PLAN 8171 Alpine Avenue, Sacramento

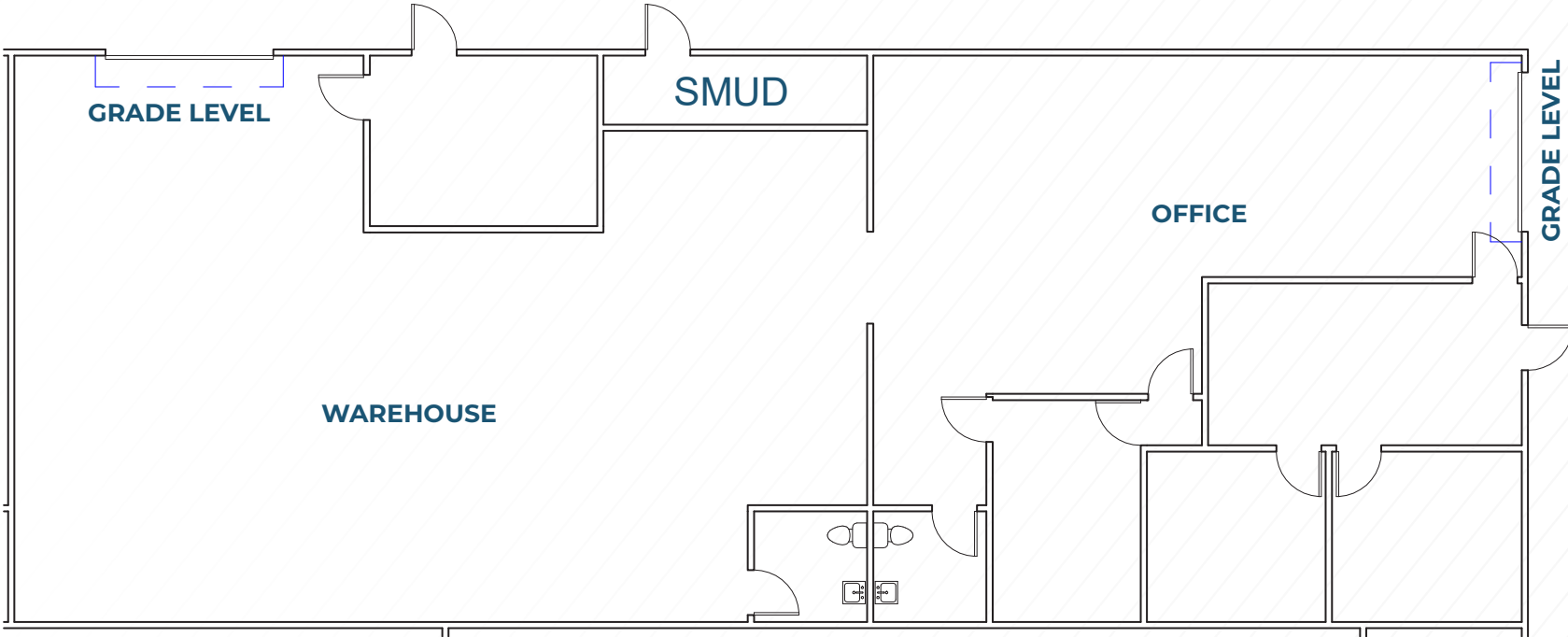
Suite B ±2,951 SF



Disclaimer: For Reference Only. Not To Scale

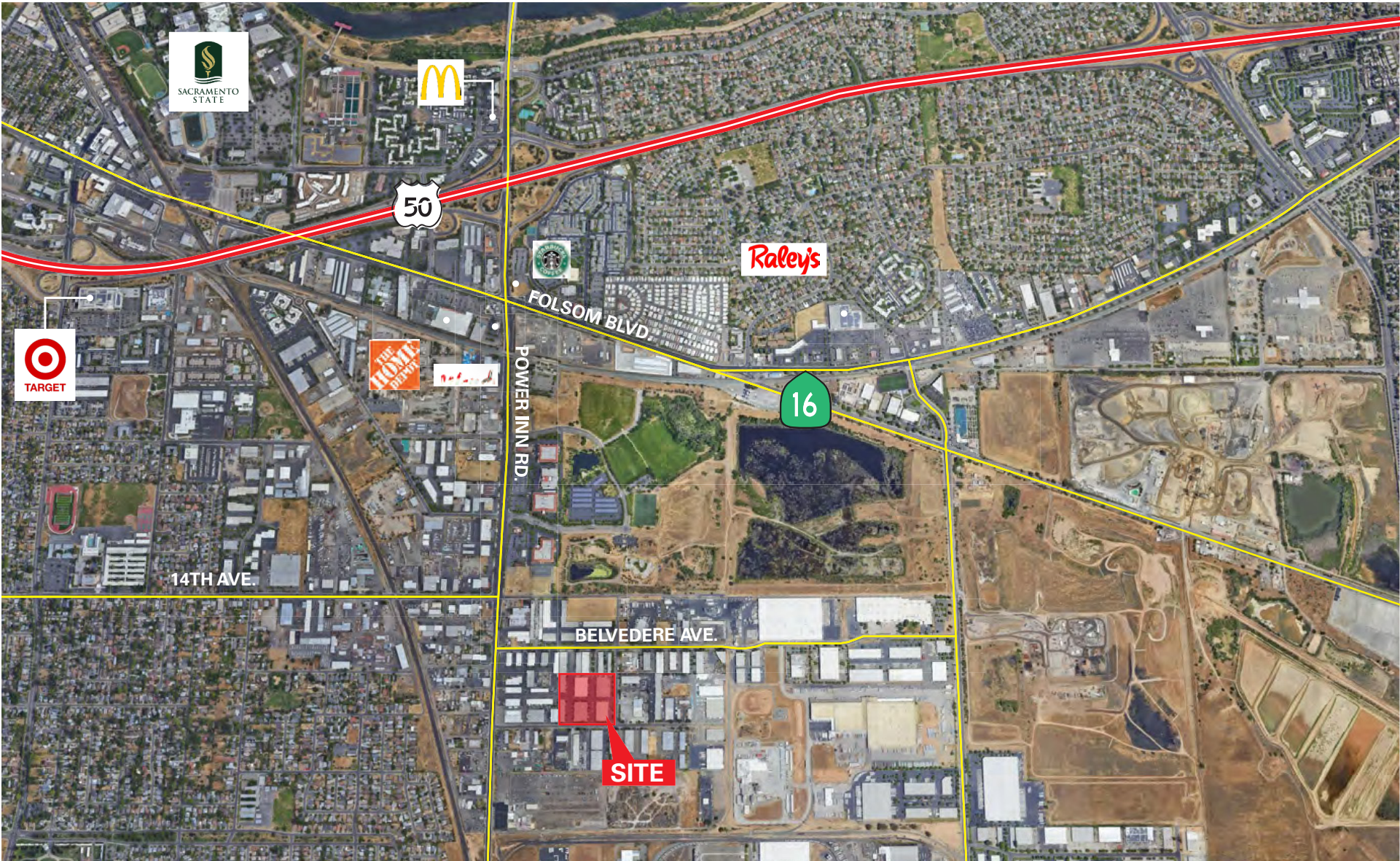
CURRENT FLOOR PLAN 8171 Alpine Avenue, Sacramento

Suites F & G: ±4,145 SF



Disclaimer: For Reference Only. Not To Scale

SITE AERIAL





NEWMARK

A PROPERTY OWNED BY:

RISING

MIKE SMITH
916.569.2352
mike.smith@nrmk.com
CA RE License #01504428

COLE CUMMINGS
916.569.2366
cole.cummings@nrmk.com
CA RE License #02106833

IRINA SHPYRKA
916.477.7384
irina.shpyrka@nrmk.com
CA RE License #02037207