

- ±17,000 SF AVAILABLE FOR SALE OR LEASE
- SEVEN (7) 12' X 10' DRIVE-IN LOADING DOORS
- EXCELLENT LOCATION - QUICK ACCESS TO I-35
- LEASE RATE REDUCTION: ~~\$10.25~~ \$9.95 PSF NNN

15553

W 110TH STREET

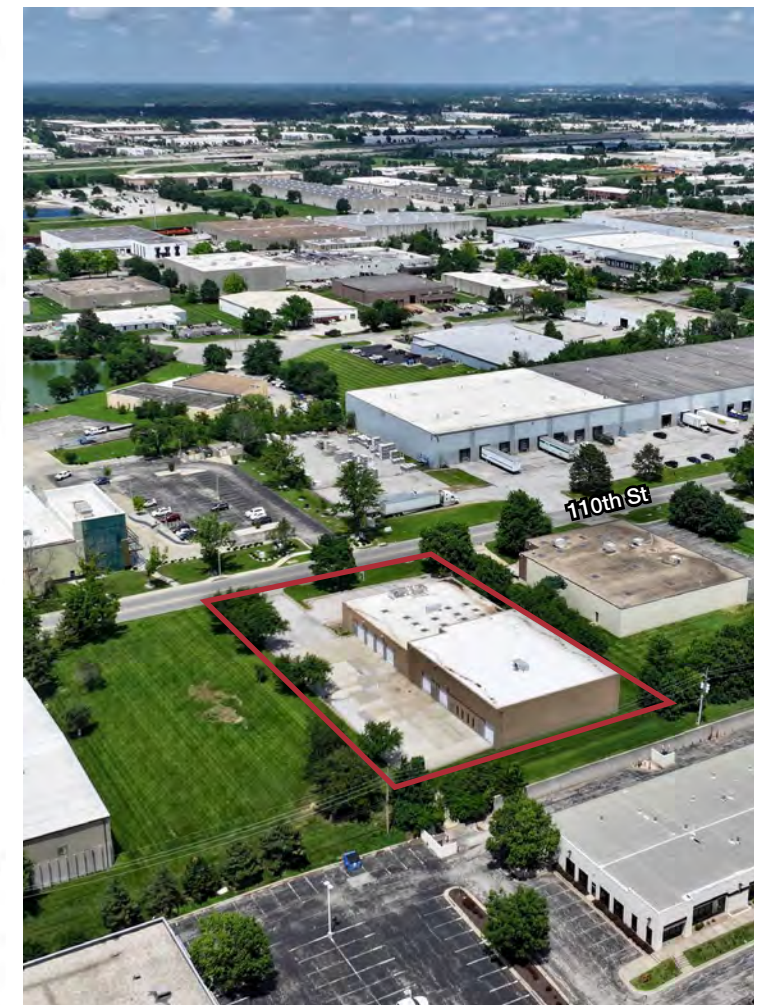
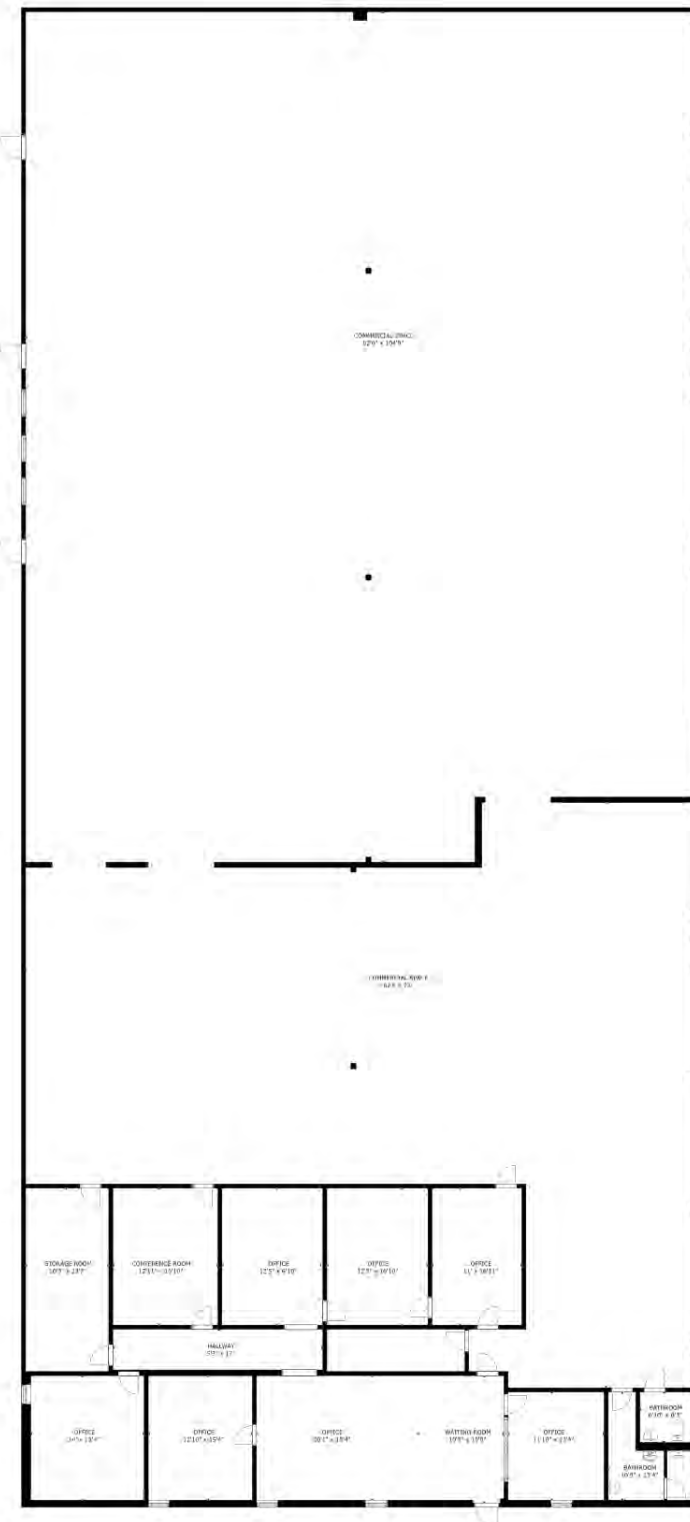
LENEXA, KANSAS



15553 W 110TH ST

±17,000 SF - LENEXA, KS

SIZE:	±17,000 SF
ACREAGE:	±1.18 AC
LOADING:	Seven (7) - 12' x 10' Drive-In Doors
ZONING:	BP2 - Planned Manufacturing
YEAR BUILT:	Original 1978 with Newer Expansion
POWER:	1600 Amps / 480 V Additional 400 Amps / 120/208 V
CONSTRUCTION:	Concrete Block
CLEAR HEIGHT:	18' - 20.5'
COLUMN SPACING:	32' x 40'
HIGHWAY ACCESS:	Quick access to I-35, I-435, and K-10
LEASE RATE REDUCTION:	\$10.25 \$9.95 PSF NNN
EST. TAXES:	\$1.91 PSF
EST. INSURANCE:	\$0.57 PSF
CAM	Self Performed
SALE PRICE:	Call Broker For Pricing



15553 W 110TH ST

±17,000 SF - LENEXA, KS



15553
W 110TH STREET

College Blvd

95th St



95th St



Quivira Rd



Lackman Rd



Renner Blvd

College Blvd



15553 W 110TH ST
±17,000 SF - LENEXA, KS

DRIVE TIMES

3 MINUTES
KANSAS HWY 10

4 MINUTES
INTERSTATE 435

6 MINUTES
INTERSTATE 35

20 MINUTES
NEW CENTURY AIRPORT

32 MINUTES
BNSF INTERMODAL

NAI Heartland

NO WARRANTY OR REPRESENTATION, EXPRESS OR IMPLIED, IS MADE AS TO THE ACCURACY OF THE INFORMATION CONTAINED HEREIN, AND THE SAME IS SUBMITTED SUBJECT TO ERRORS, OMISSIONS, CHANGE OF PRICE, RENTAL OR OTHER CONDITIONS, PRIOR SALE, LEASE OR FINANCING, OR WITHDRAWAL WITHOUT NOTICE, AND OF ANY SPECIAL LISTING CONDITIONS IMPOSED BY OUR PRINCIPALS NO WARRANTIES OR REPRESENTATIONS ARE MADE AS TO THE CONDITION OF THE PROPERTY OR ANY HAZARDS CONTAINED THEREIN ARE ANY TO BE IMPLIED.

