

# Flexible, Functional & Ready for Move-In

Industrial Units For Lease | 30685 Solon Industrial Parkway, Solon, Ohio 44139



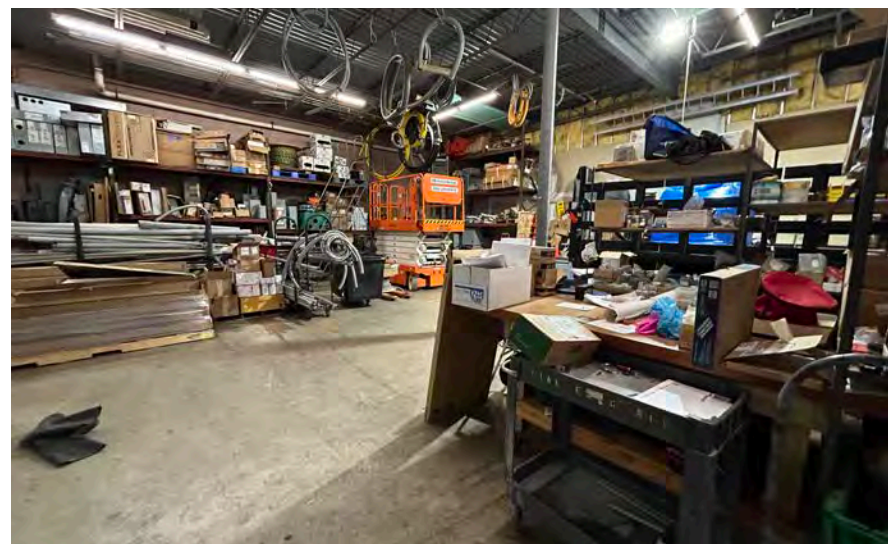
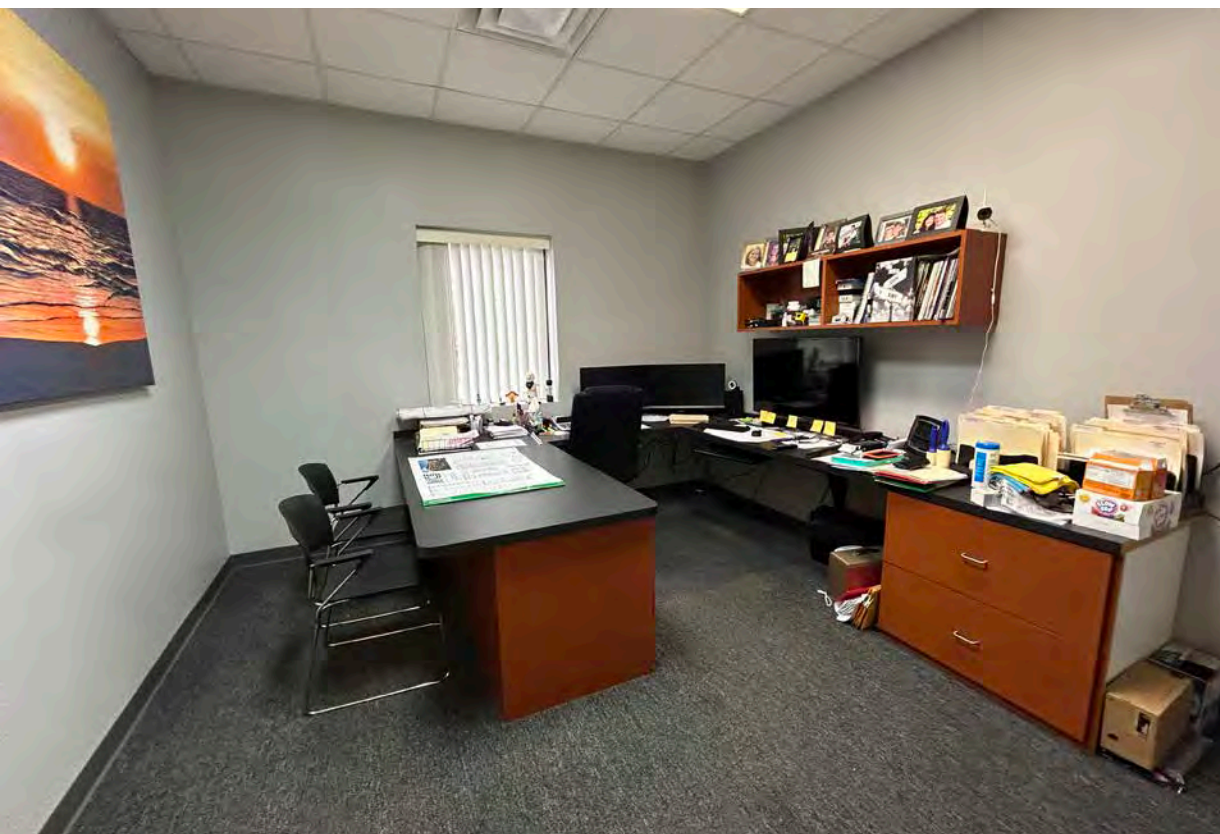
# 30685 Solon Industrial Pkwy

- Functional Layouts: Approximately 50% office / 50% warehouse with a Drive-in door (12'x14') in each unit – ideal for contractors, service businesses and light industrial users
- Convenient Access: situated in a well-maintained business park within minutes from major highways (I-480, US-422, and I-271)
- Ample parking and box truck access for staff and small fleet vehicles
- Move-In Ready Options: Clean, well-maintained spaces with flexible configurations to meet tenant needs

## Quick Stats

Building Size	23,885 SF
Year Built	1998
Zoning	I-2 (Industrial Manufacturing)
Clear Height	15'
Power	200a/240v/3p
Lighting	Fluorescent





# Availability

Unit	Total SF	Office SF	Warehouse SF	Docks	Drive-In Doors	Lease Rate/Month
D & E	5,240 SF	2,000	3,240	-0-	Two (2) - 12' x 14'	\$5,240
C	2,620 SF	1,000	1,620	-0-	One (1) - 12' x 14'	\$2,620



**106,762**

Population  
(2025 | 5 Mile)

**42.7**

Median Age  
(2025 | 5 Mile)

**44,897**

Households  
(2025 | 5 Mile)

**\$139,251**

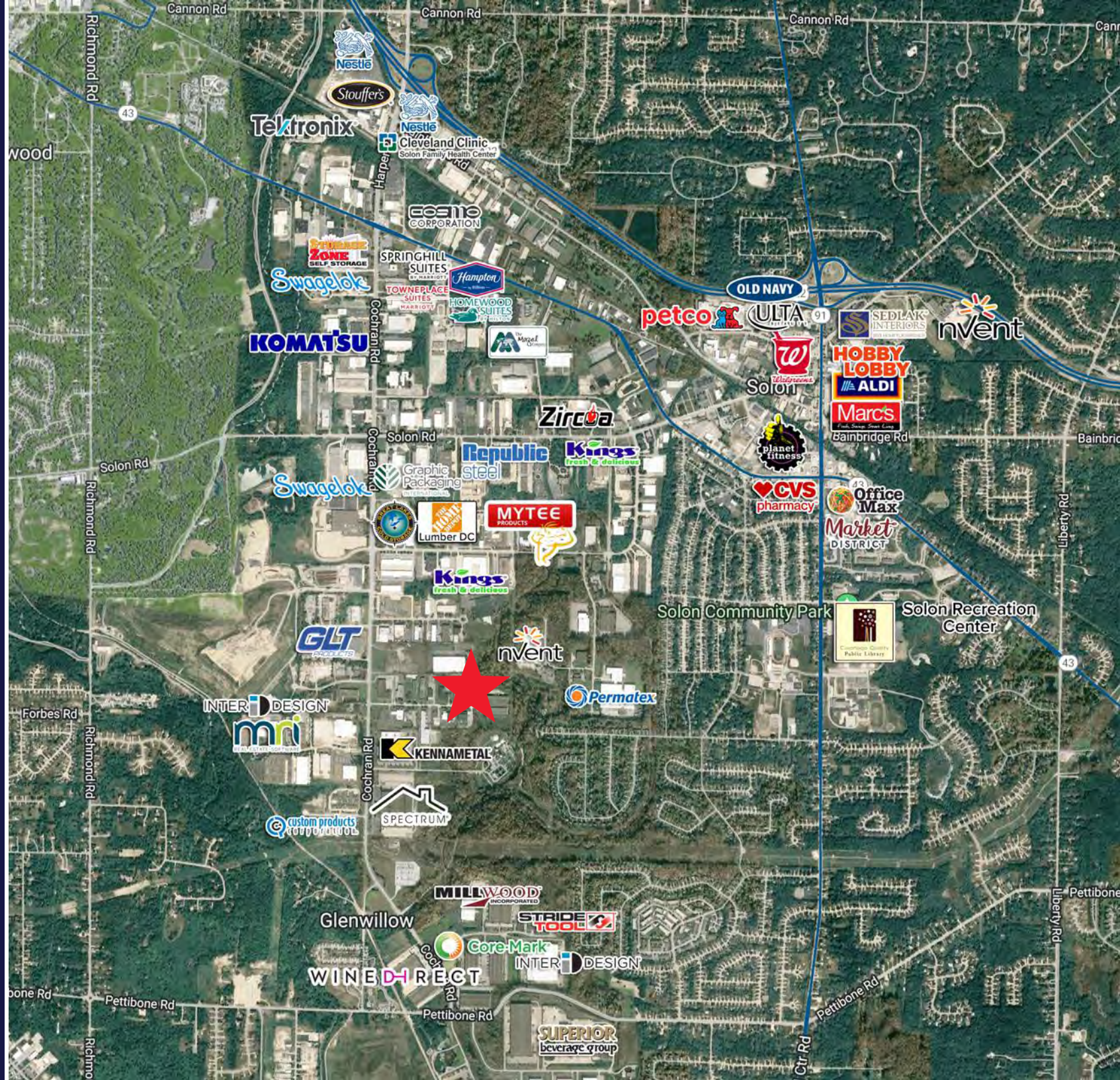
Household Income  
(2025 | 5 Mile)

**5,594**

Total Businesses  
(2025 | 5 Mile)

**76,487**

Total Employees  
(2025 | 5 Mile)





**30685 SOLON INDUSTRIAL PARKWAY  
SOLON, OHIO 44139**

**JASON LAVER, SIOR**  
Senior Vice President  
jlaver@crescorealestate.com  
+1 216 525 1489

**RYAN CURTIN**  
Associate  
rcurtin@crescorealestate.com  
+1 216 232 4105



**CUSHMAN &  
WAKEFIELD**



**Cushman & Wakefield | CRESCO**  
6100 Rockside Woods Blvd, Suite 200  
Cleveland, Ohio 44131

[crescorealestate.com](http://crescorealestate.com)

©2026 Cushman & Wakefield. All rights reserved. The information contained in this communication is strictly confidential. This information has been obtained from sources believed to be reliable but has not been verified. NO WARRANTY OR REPRESENTATION, EXPRESS OR IMPLIED, IS MADE AS TO THE CONDITION OF THE PROPERTY (OR PROPERTIES) REFERENCED HEREIN OR AS TO THE ACCURACY OR COMPLETENESS OF THE INFORMATION CONTAINED HEREIN, AND SAME IS SUBMITTED SUBJECT TO ERRORS, OMISSIONS, CHANGE OF PRICE, RENTAL OR OTHER CONDITIONS, WITHDRAWAL, WITHOUT NOTICE, AND TO ANY SPECIAL LISTING CONDITIONS IMPOSED BY THE PROPERTY OWNER(S). ANY PROJECTIONS, OPINIONS OR ESTIMATES ARE SUBJECT TO UNCERTAINTY AND DO NOT SIGNIFY CURRENT OR FUTURE PROPERTY PERFORMANCE.