



Luminous and move-in ready office space for lease in the heart of Laval

- Exceptional location in front of Centropolis with several on-site restaurants and close to many services and amenities (Centre Laval, Carrefour Laval, etc.)
- Easy access to public transit network (bus lines and metro station Montmorency) and to highway 15.
- Entire 4th floor available. Top floor offering exceptional views. Excellent fenestration and natural light thanks to large windows on four sides.
- Vast and no cost exterior parking area. Interior parking also available.



11,729 square feet
on the 4th floor



Available
immediately



Large windows and
abundant light



Easy access to
highway 15 (Laurentides)

Office space for lease

1595, Daniel-Johnson Boulevard



**Get more
information**

Kevin Dopp
Vice President, Real Estate Broker
+1 514 349 7953

Martin Rousseau
Vice President, Chartered Real Estate Broker
+1 514 392 9474

Office space for lease

1595, Daniel-Johnson Boulevard



Office space for lease

1595, Daniel-Johnson Boulevard



**Get more
information**

Kevin Dopp
Vice President, Real Estate Broker
+1 514 349 7953

Martin Rousseau
Vice President, Chartered Real Estate Broker
+1 514 392 9474

Office space for lease

1595, Daniel-Johnson Boulevard



Office space for lease

1595, Daniel-Johnson Boulevard



Property details

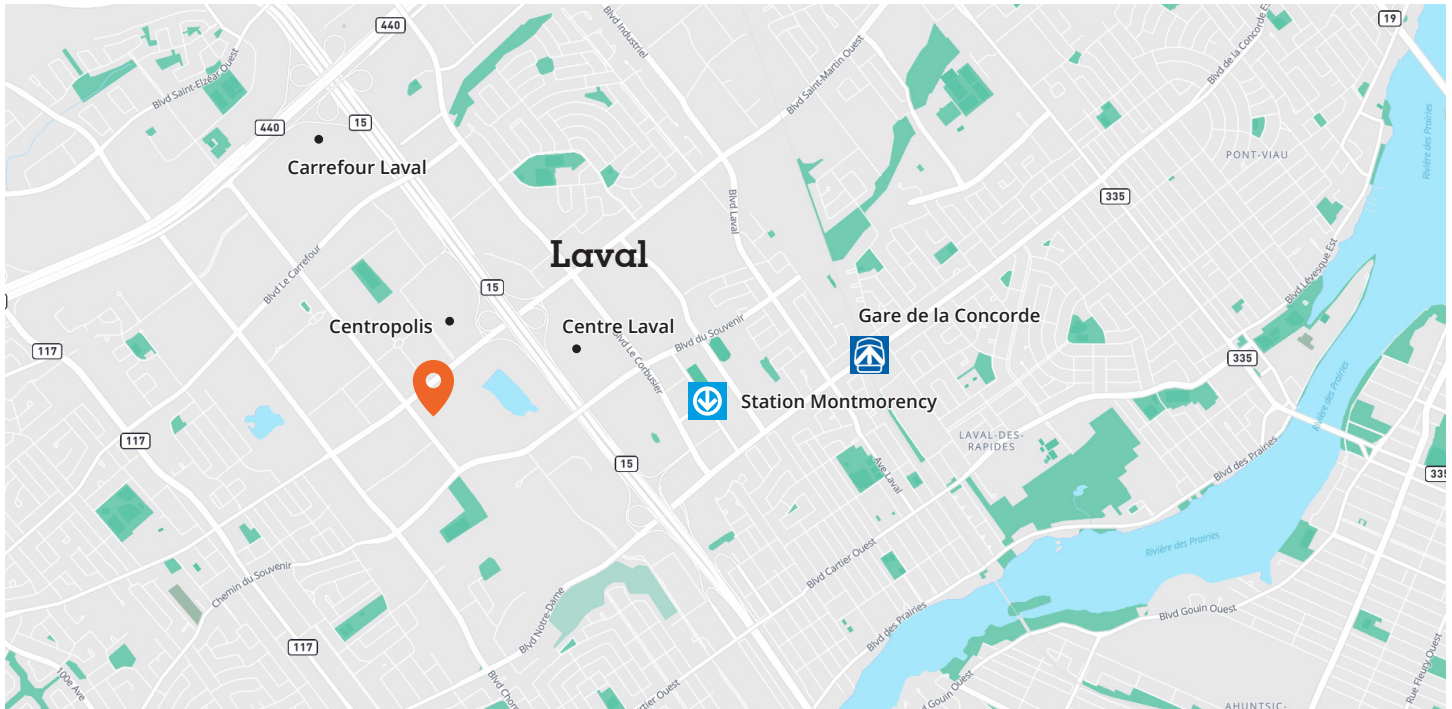
Year of Construction	2005
Building Space	46,000 square feet
Number of Floors	4 floors
Typical Floor Size	11,500 square feet
Available Area	11,729 square feet
Availability	Immediate
Asking Rent	Contact broker
In-premises cleaning	Not included



Get more information

Kevin Dopp
Vice President, Real Estate Broker
kevin.dopp@avisonyoung.com
+1 514 349 7953

Martin Rousseau
Vice President, Chartered Real Estate Broker
martin.rousseau@avisonyoung.com
+1 514 392 9474



Location

The building is located in the downtown of Laval and in the heart of the commercial area and benefits from an excellent accessibility with its proximity to Saint-Martin, Le Carrefour and Le Corbusier boulevards, offering easy access to main routes (highways 15 and 440).

Also, the building is close to various public transit networks, including De La Concorde train station, Montmorency metro station and several buses lines serving shopping centers. This enhanced accessibility contributes to ease the travel for residents and visitors.

This advantageous location offers convenient access to several shopping centers, including Carrefour Laval, Centropolis and Centre Laval guaranteeing a wide range of shops and services.



10-minute drive from Montmorency metro station (orange line) and De La Concorde train station (Saint-Jérôme line)



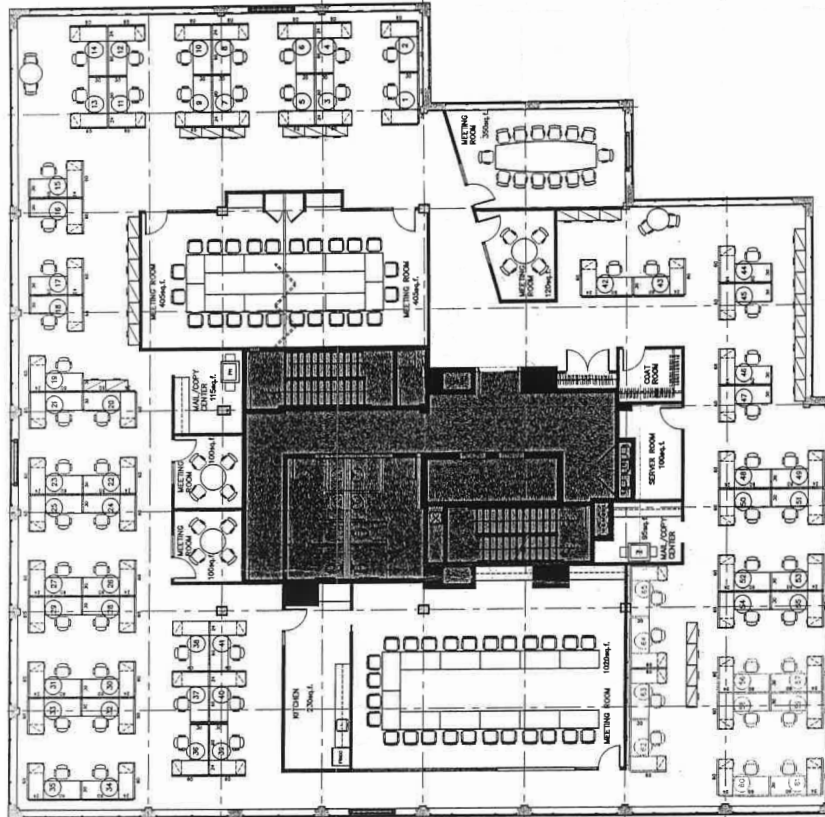
11 bus lines available around Carrefour Laval



30-minute drive from downtown Montréal with main highways



In the heart of the Laval commercial area including Carrefour Laval, Centropolis and Centre Laval



**Want to visit the property?
Contact us for more information.**

Kevin Dopp
Vice President, Real Estate Broker
kevin.dopp@avisonyoung.com
+1 514 349 7953

Martin Rousseau
Vice President, Chartered Real Estate Broker
martin.rousseau@avisonyoung.com
+1 514 392 9474

Avison Young
1801, McGill College Avenue, suite 500,
Montréal, Québec H3A 2N4
+1 514 392 1330

© 2024. Avison Young Commercial Real Estate Services, LP, Commercial Real Estate Agency. Information contained herein was obtained from sources deemed reliable and, while thought to be correct, have not been verified. Avison Young does not guarantee the accuracy or completeness of the information presented, nor assumes any responsibility or liability for any errors or omissions therein.