

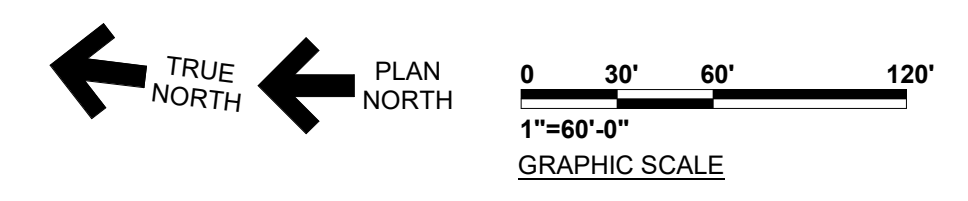
**PROPOSED 1 STORY WAREHOUSE**  
 GROSS AREA: 231,917 SF  
 RENTABLE AREA: 232,931 SF  
 STRUCTURAL GRID AREA: 230,400 SF  
 180 PARKING SPACES

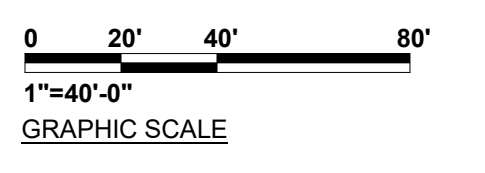
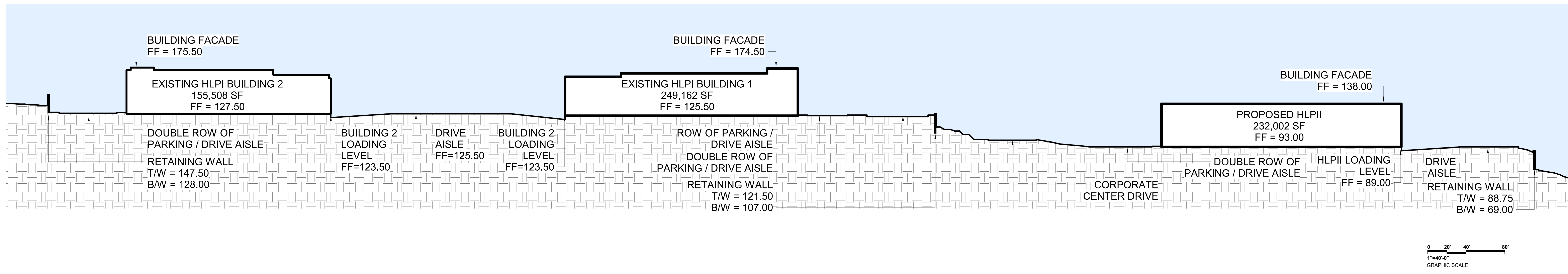
CORPORATE CENTER DRIVE

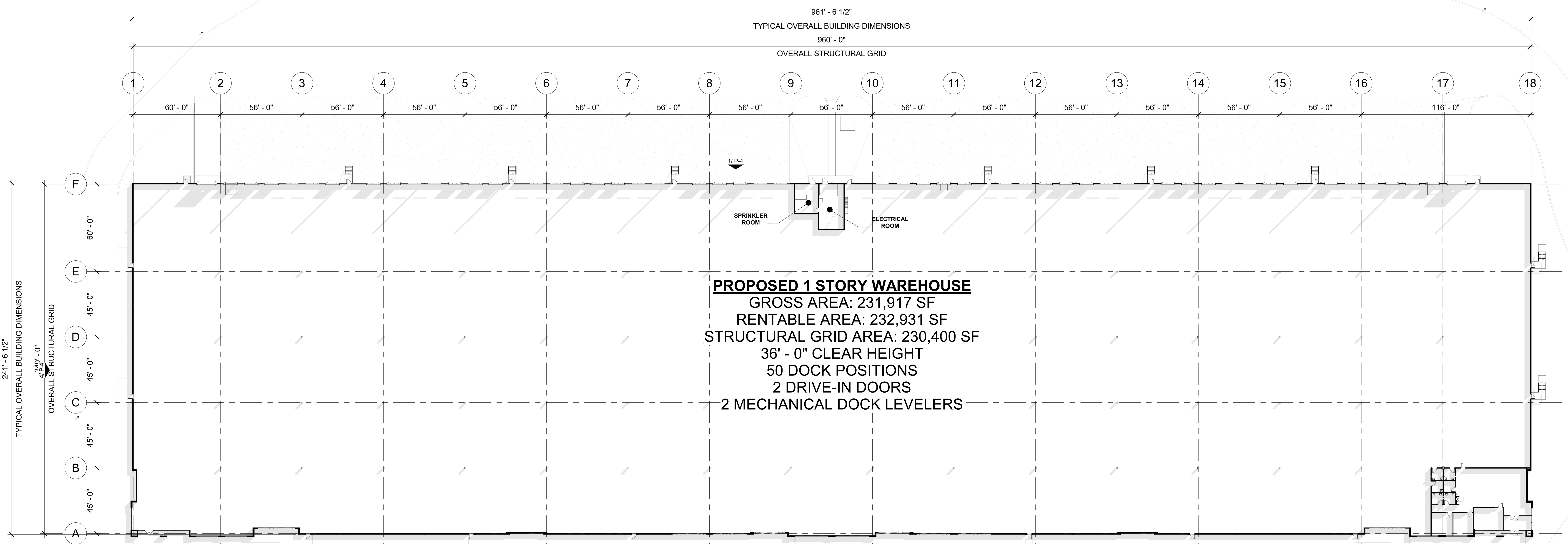
OLD STONEY RUN ROAD

**EXISTING HANOVER LOGISTICS PARK I**

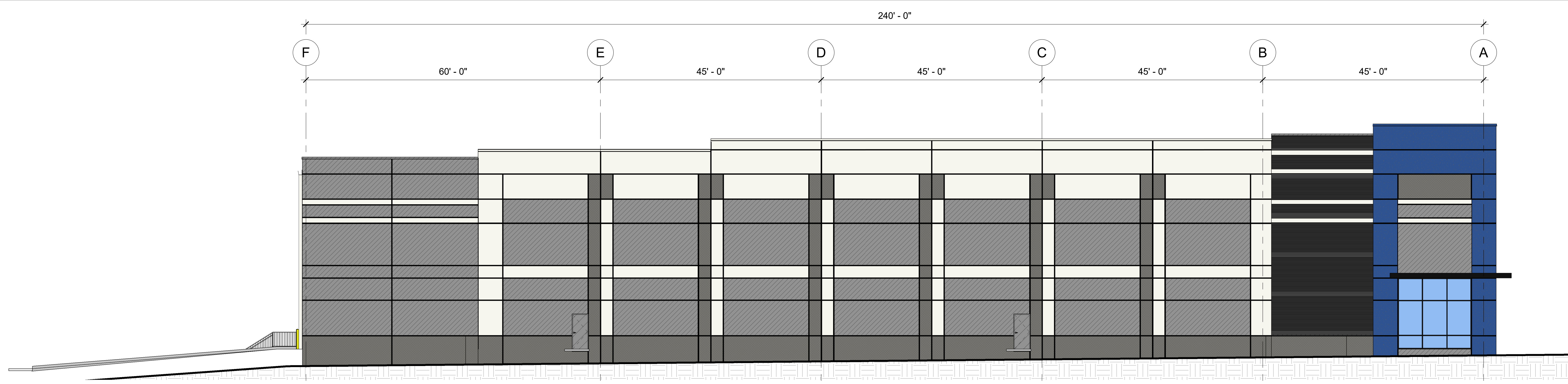
GENERAL NOTES:  
 1. BUILDING AREAS AND DIMENSIONS IDENTIFIED ON PLANS ARE PRELIMINARY AND SUBJECT TO CHANGE THROUGH THE DEVELOPMENT AND DOCUMENTATION.



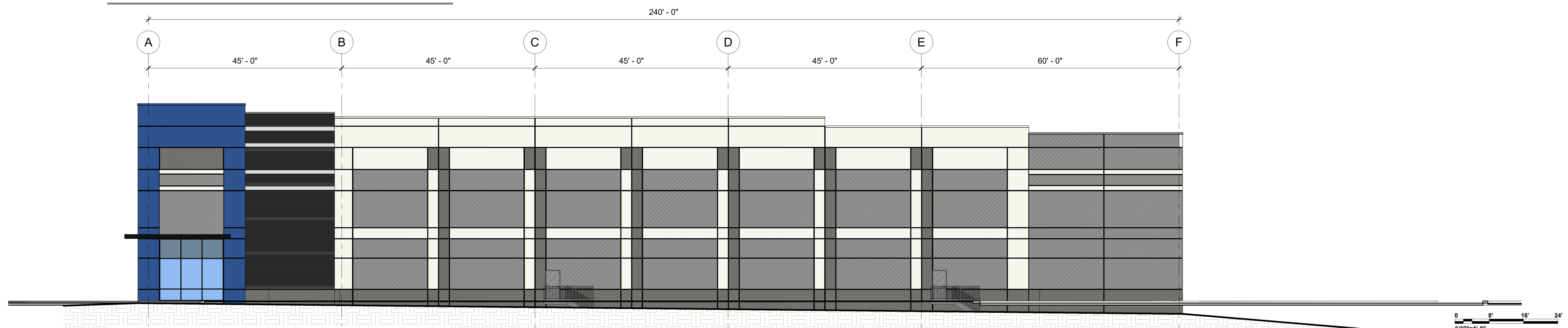




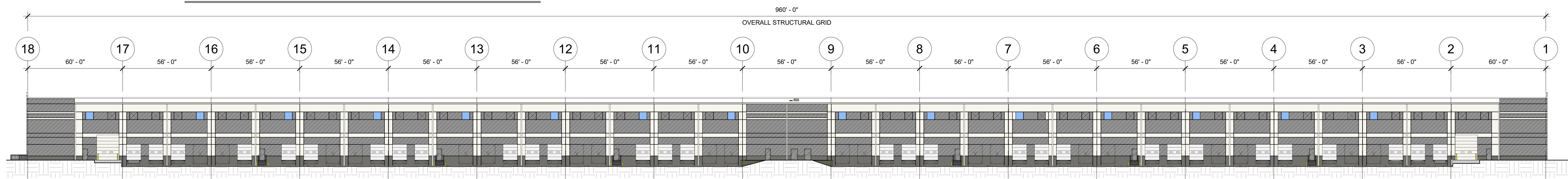
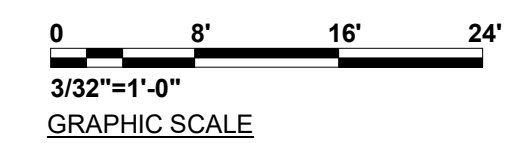
**PROPOSED 1 STORY WAREHOUSE**  
 GROSS AREA: 231,917 SF  
 RENTABLE AREA: 232,931 SF  
 STRUCTURAL GRID AREA: 230,400 SF  
 36'-0" CLEAR HEIGHT  
 50 DOCK POSITIONS  
 2 DRIVE-IN DOORS  
 2 MECHANICAL DOCK LEVELERS



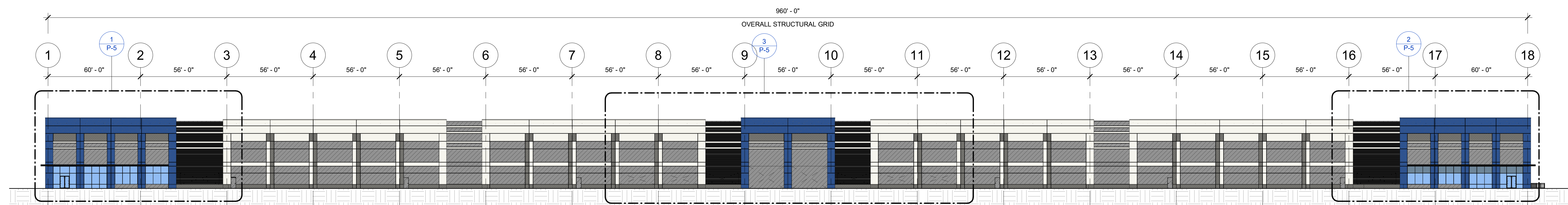
**NORTH ELEVATION**



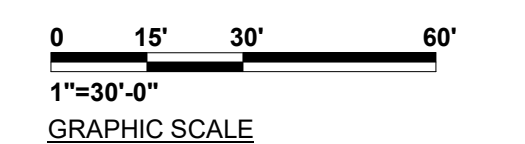
**SOUTH ELEVATION**

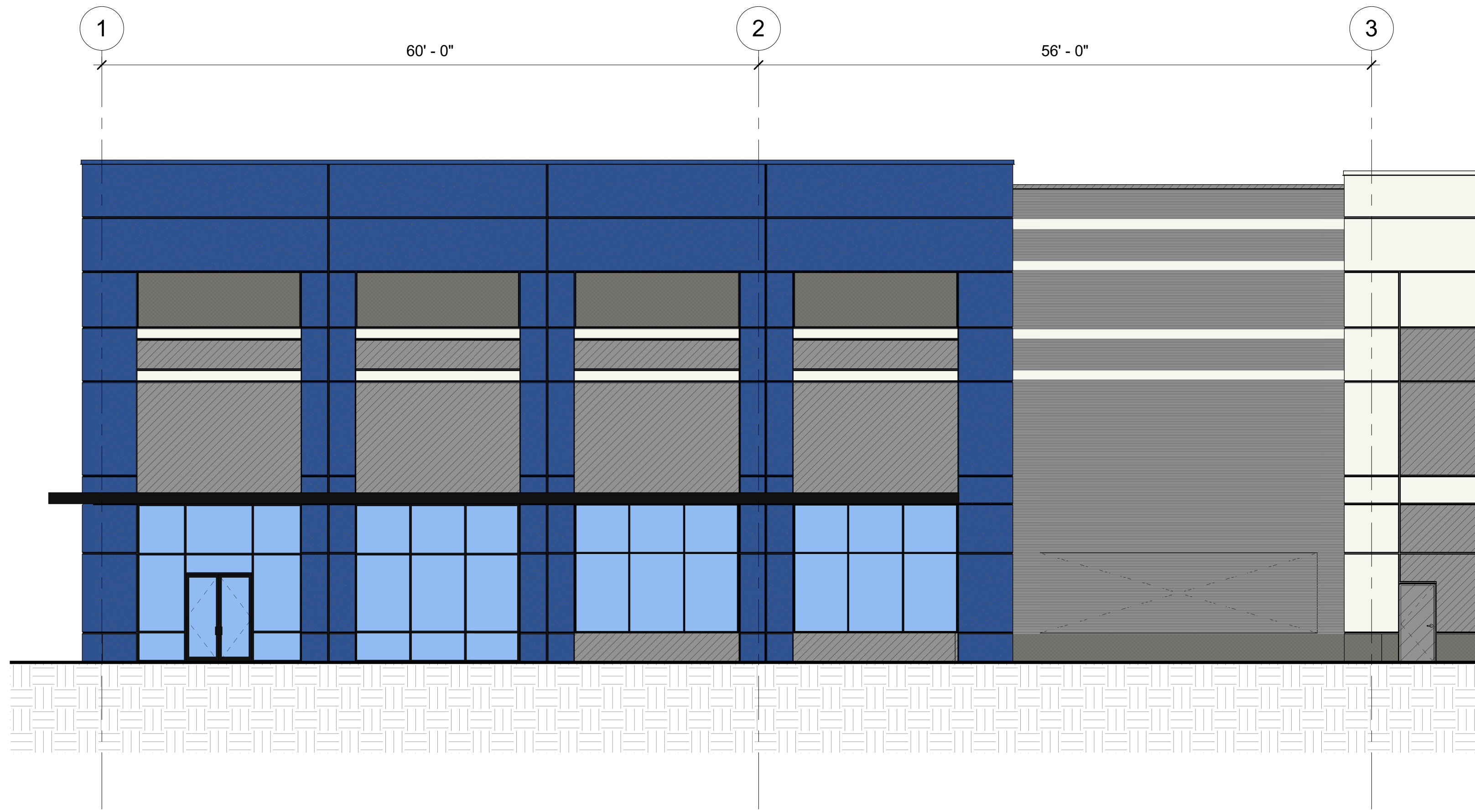


**EAST ELEVATION**

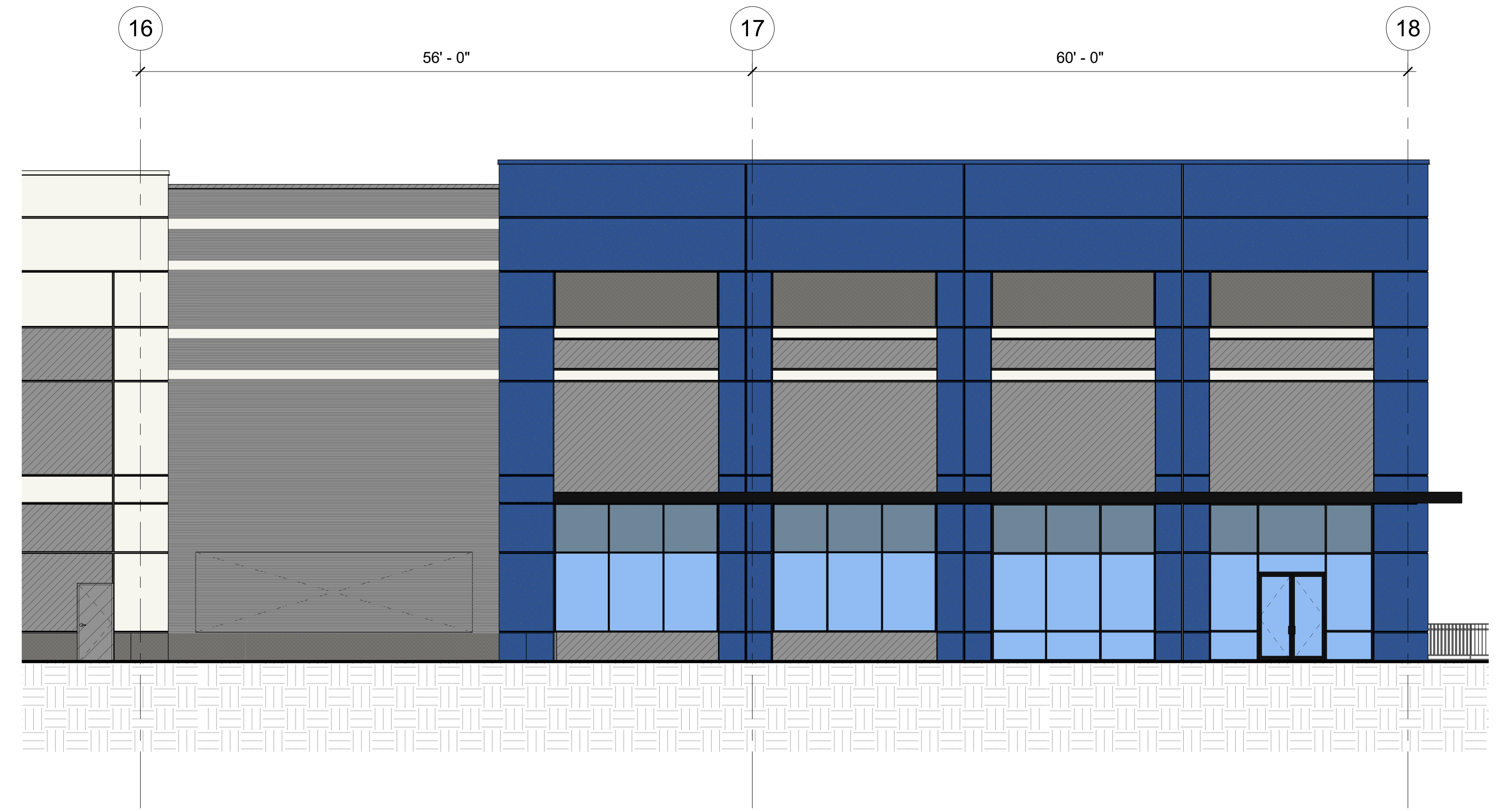


**WEST ELEVATION**

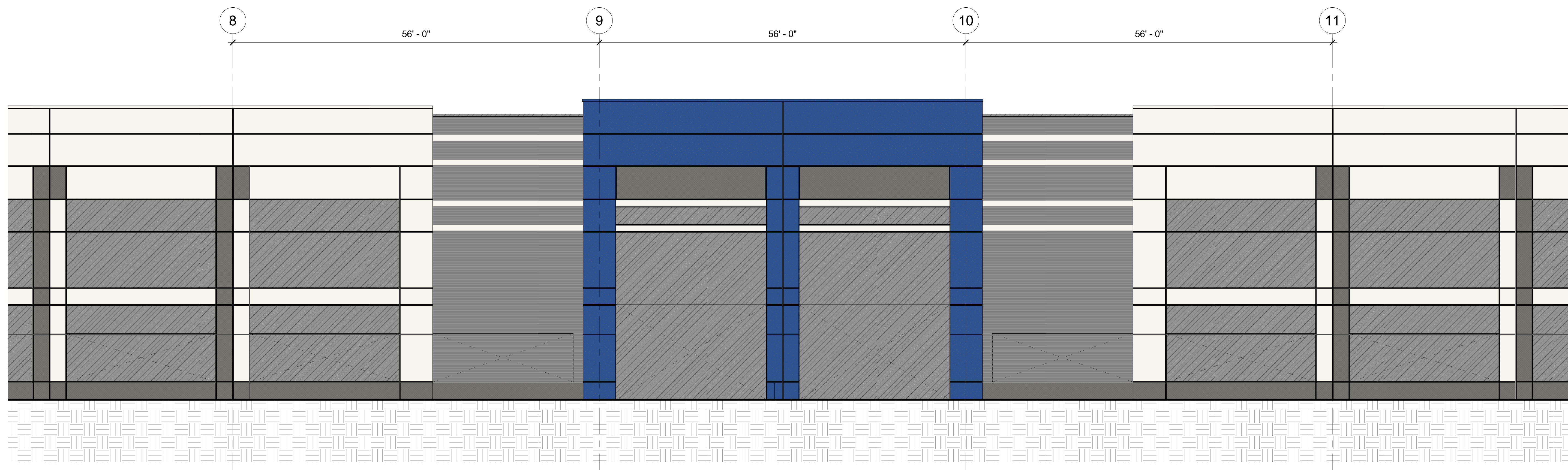




**ENLARGED NORTH WEST ENTRANCE**



**ENLARGED SOUTH WEST ENTRANCE**



**ENLARGED FUTURE CENTER ENTRANCE**

