

# 344 Broome Street/150 Bowery

NOLITA  
NEW YORK, NY



**NEWMARK**

# Property Details

## Location

Northwest corner of Bowery and Broome Street

## Approximate Size

Ground Floor 4,900 SF\*  
Lower Level 4,900 SF\*  
Total 9,800 SF\*

\*Divisible

## Frontage

54 FT on Bowery  
95 FT on Broome Street  
149 FT of wraparound frontage

## Term

Negotiable

## Rent

Upon request

## Neighbors

Supreme, Whole Foods Market, Solidcore, Spicy Moon, Plantshed, La Colombe Coffee, YMCA, Raf's, IXTA Cocina, Dark Matter Coffee, Credo, Bar Veloce, Forsythia, New Museum, Arabica Coffee, Everlane, Aime Leon Dore, Marine Layer, Cafe Gitane, Buck Mason, Torrissi, Milk Bar and The Ripple Room

## Comments

Flagship corner location that connects SoHo, NoLiTa and the Lower East Side with excellent apparel stores, outstanding restaurants and trendy art gallery co-tenancies

Full-building branding opportunity with tremendous visibility

All uses accepted

Logical divisions considered

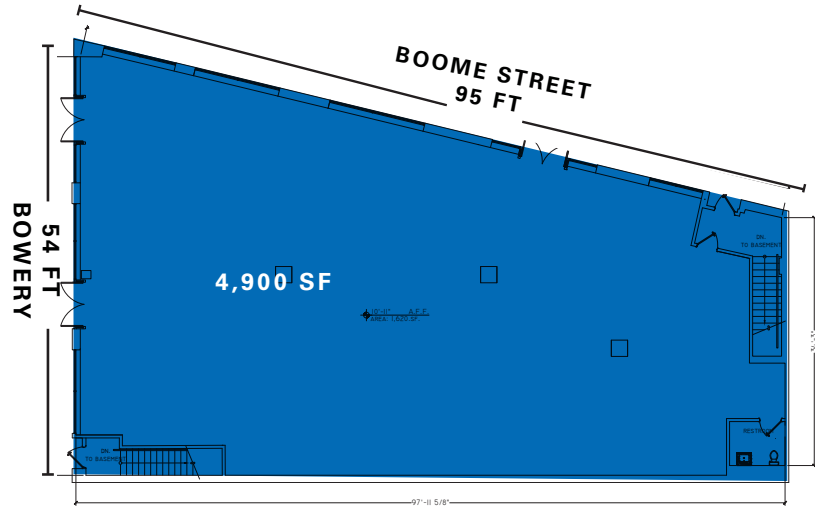
Potential to activate rooftop

Steps from Ian Schrager's Public Hotel, the Citizen M Hotel, Sister City by Ace Hotel, 138 Bowery Hotel and the newest to join the area- Moxy NYC Lower East Side

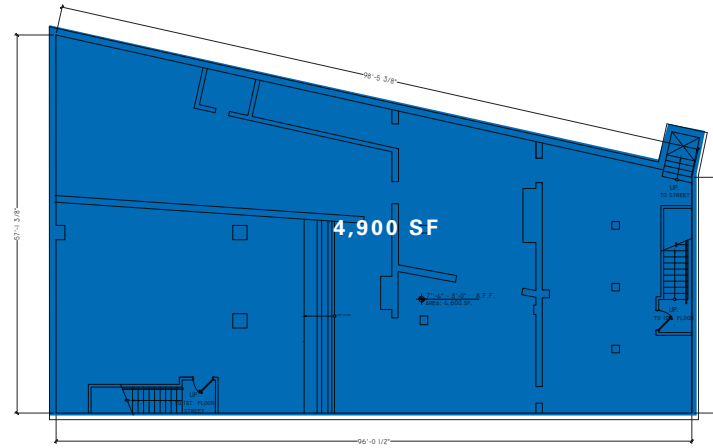
Direct Lower Level access from the Bowery for a potential speakeasy or other activation

344 BROOME STREET/150 BOWERY

EXISTING CONDITIONS

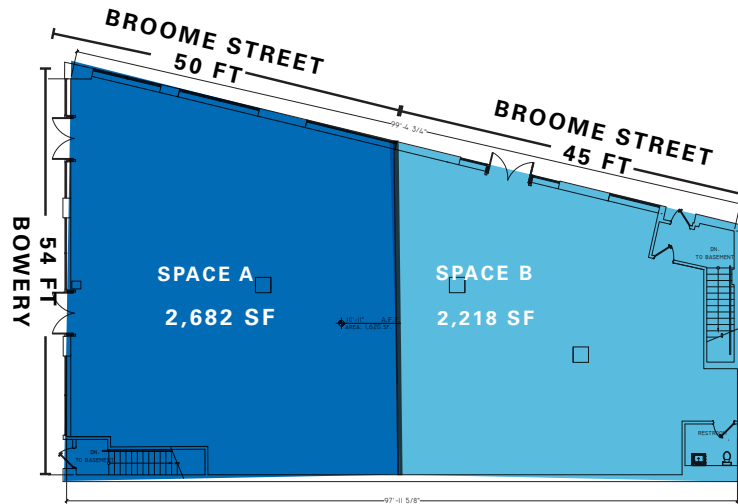


Ground Floor

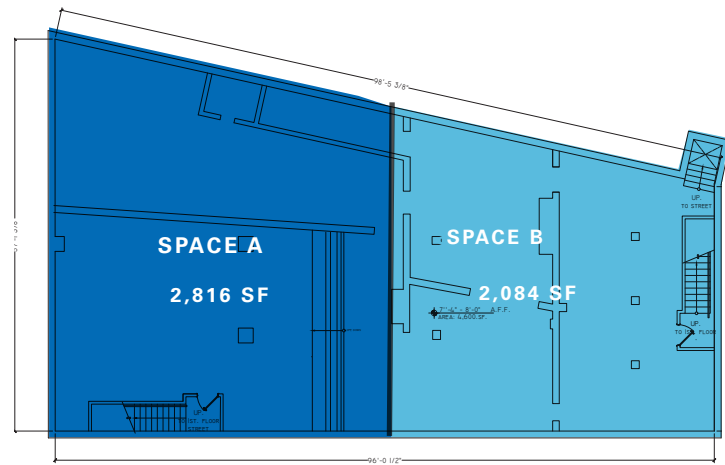


Lower Level

PROPOSED DIVISIONS



Ground Floor Division

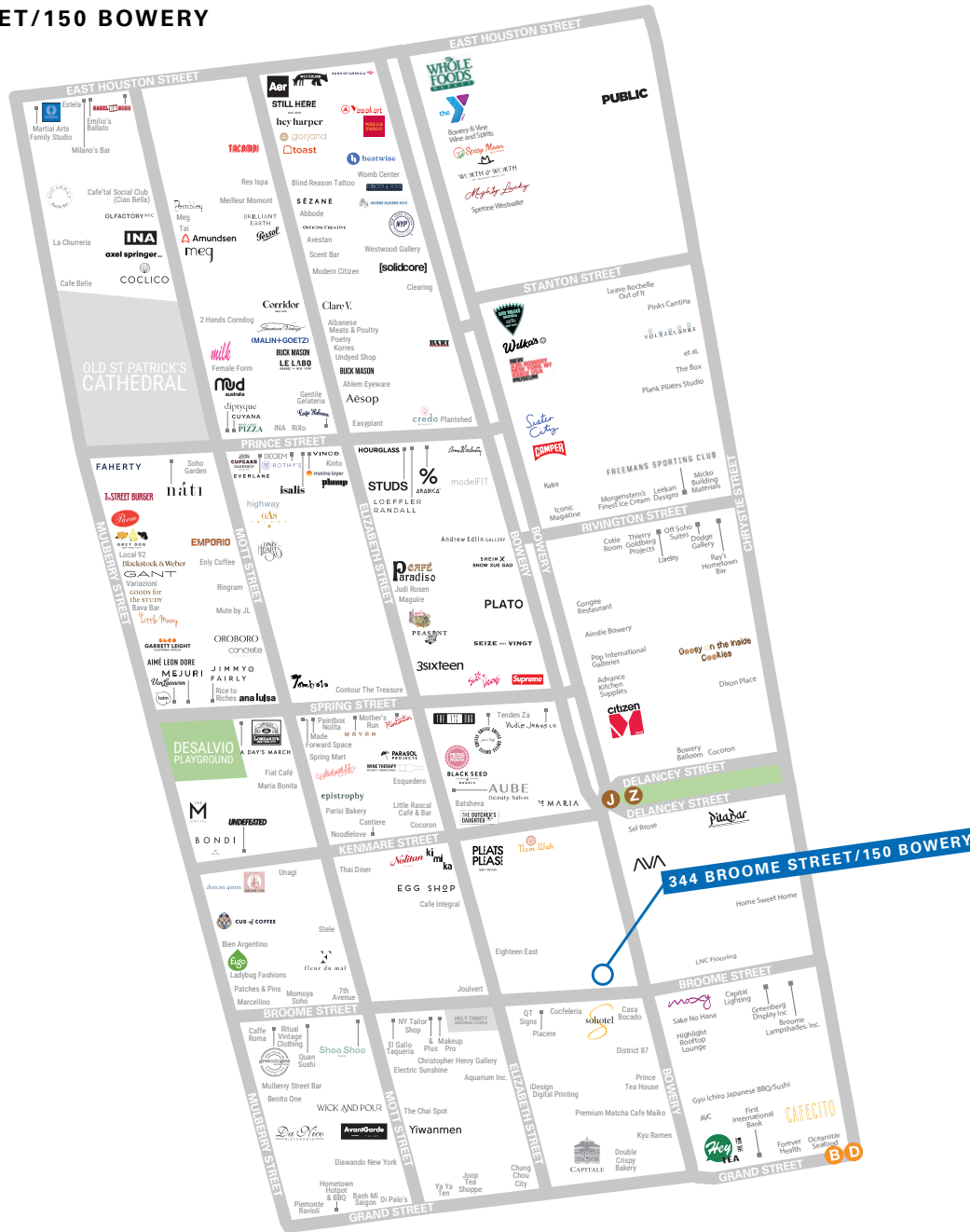


Lower Level Division

# Neighboring Tenants



344 BROOME STREET/150 BOWERY



CONTACT

**Andrew Stern**  
 t 212-351-9355  
 andrew.stern@nmrk.com

**Ravi Idnani**  
 t 212-916-2938  
 ravi.idnani@nmrk.com

**Julia Singer**  
 t 212-655-1019  
 julia.singer@nmrk.com

[nmrk.com](http://nmrk.com)

©2025 NEWMARK Licensed in New York as Newmark Retail, Real Estate Broker  
 The information contained herein has been obtained from sources deemed reliable but has not been verified and no guarantee, warranty or representation, either express or implied, is made with respect to such information. Terms of sale or lease and availability are subject to change or withdrawal without notice.