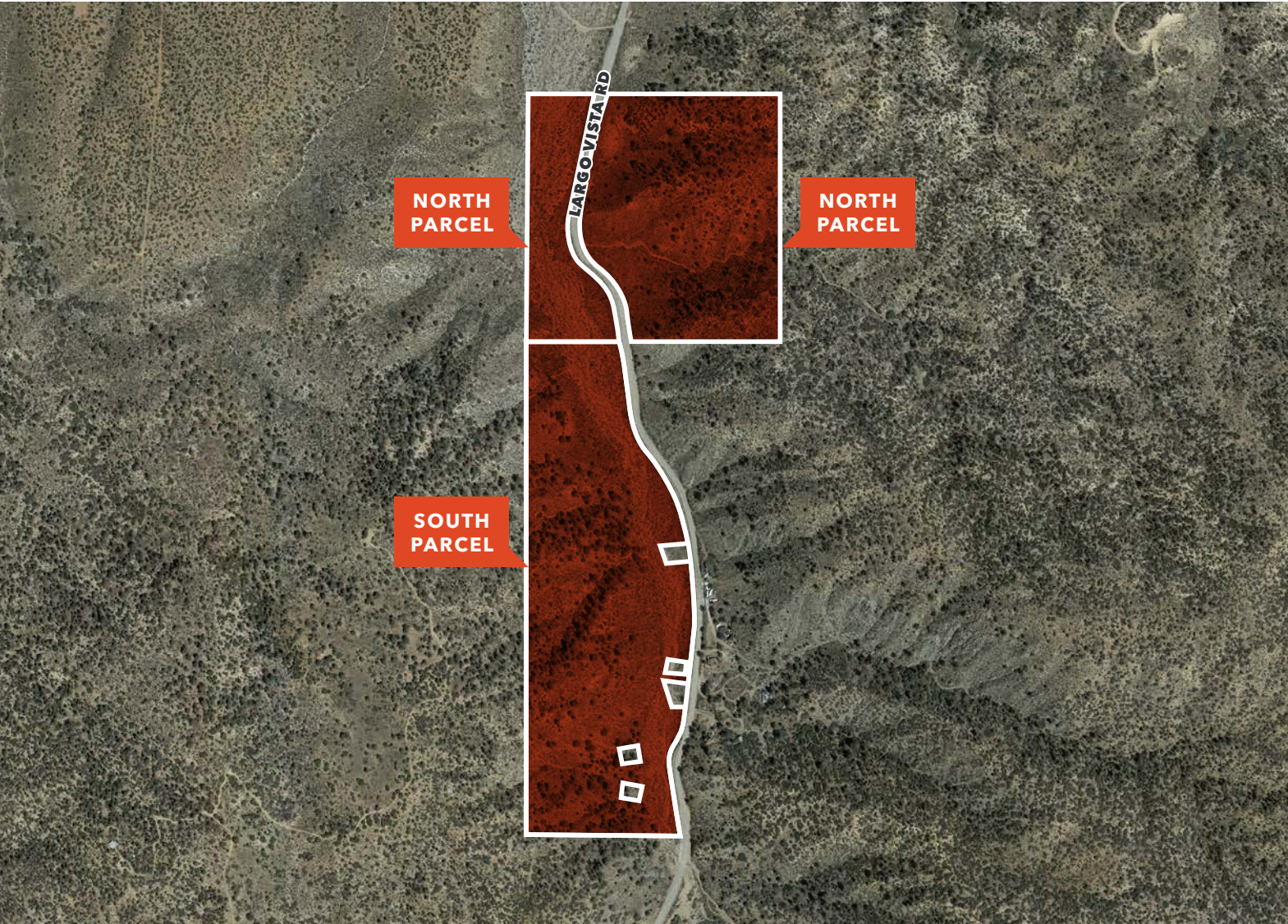


**FOR SALE**

# Largo Vista Land - 2 Parcels

DIRECT ACCESS FROM LARGO VISTA RD, LARGO VISTA, CA



**PRICE** Negotiable -  
motivated seller

**NORTH PARCEL**

**APN** 3063-005-024

**SIZE** 38.07 Acres

**SOUTH PARCEL**

**APN** 3063-001-003

**SIZE** 44.84 Acres

**LOCATION OVERVIEW**

Largo Vista is an unincorporated community in Los Angeles County, California. Largo Vista is located in the Antelope Valley 22.5 miles (36.2 km) southeast of Palmdale. The subject parcel is 1 mile north of Big Pines Hwy and approximately 4 miles from the city center of Crystalair.

SOURCE: WIKIPEDIA.ORG

**JOSH CUNNINGHAM**

Vice President

949.557.5075

[josh.cunningham@kidder.com](mailto:josh.cunningham@kidder.com)

LIC N° 01802660

[KIDDER.COM](http://KIDDER.COM)

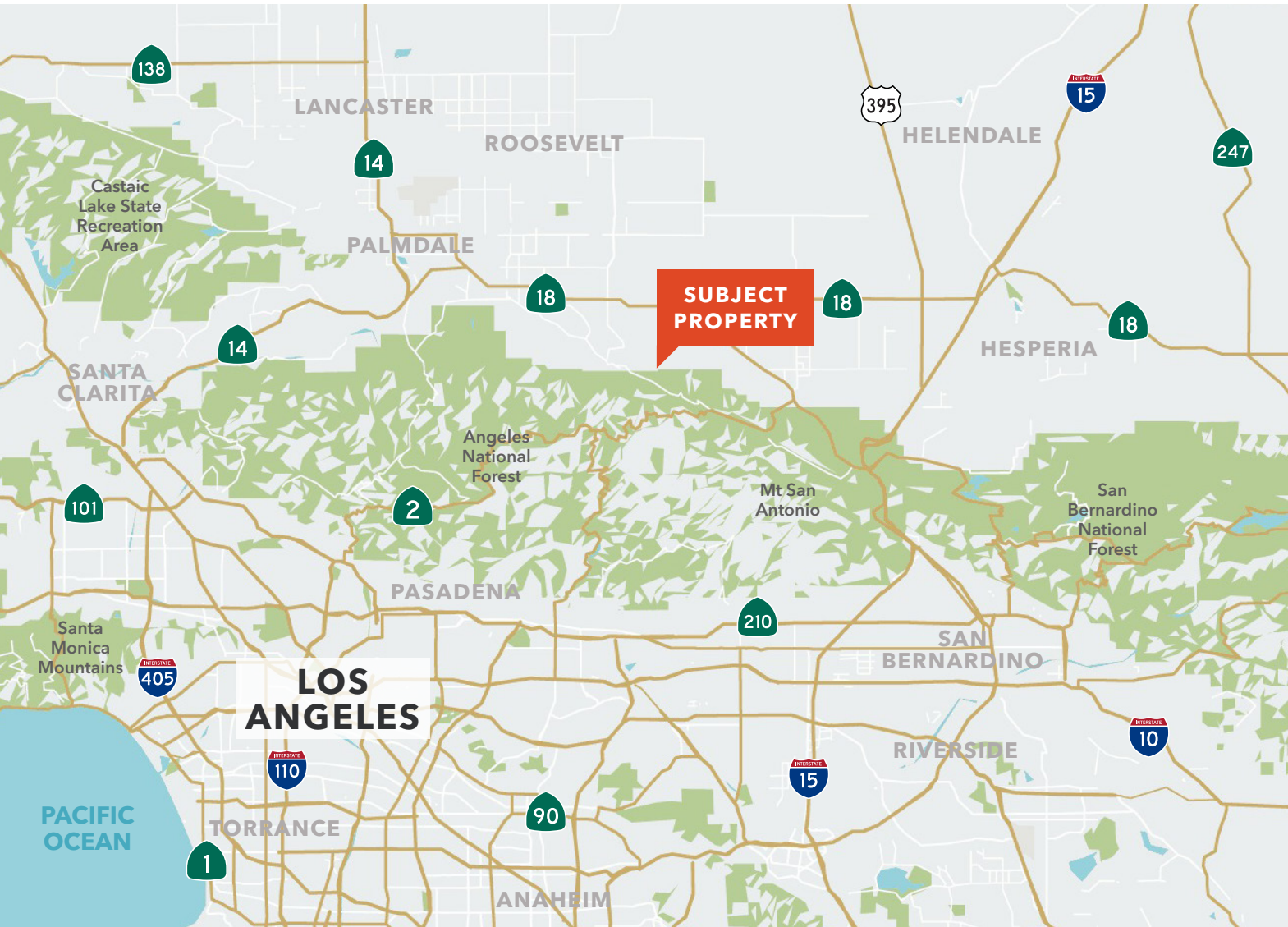
This information supplied herein is from sources we deem reliable. It is provided without any representation, warranty, or guarantee, expressed or implied as to its accuracy. Prospective Buyer or Tenant should conduct an independent investigation and verification of all matters deemed to be material, including, but not limited to, statements of income and expenses. Consult your attorney, accountant, or other professional advisor.



**FOR SALE**

# Largo Vista Land - 2 Parcels

DIRECT ACCESS FROM LARGO VISTA RD, LARGO VISTA, CA



## LCA12

ZONING

## 2 AC

MINIMUM SIZE LOT

### LAND USE

A1 includes light agricultural uses including raising of horses, cattle sheep, or goats. The zoning also includes single family homes, group homes, and adult residential facilities.

PLEASE CONTACT LOS ANGELES COUNTY FOR PORTAL ACCESSOR AND ADDITIONAL INFORMATION [HERE](#)

**JOSH CUNNINGHAM**

Vice President

949.557.5075

[josh.cunningham@kidder.com](mailto:josh.cunningham@kidder.com)

LIC N° 01802660

KIDDER.COM

This information supplied herein is from sources we deem reliable. It is provided without any representation, warranty, or guarantee, expressed or implied as to its accuracy. Prospective Buyer or Tenant should conduct an independent investigation and verification of all matters deemed to be material, including, but not limited to, statements of income and expenses. Consult your attorney, accountant, or other professional advisor.

