

241

— Yonge Street —

CBRE

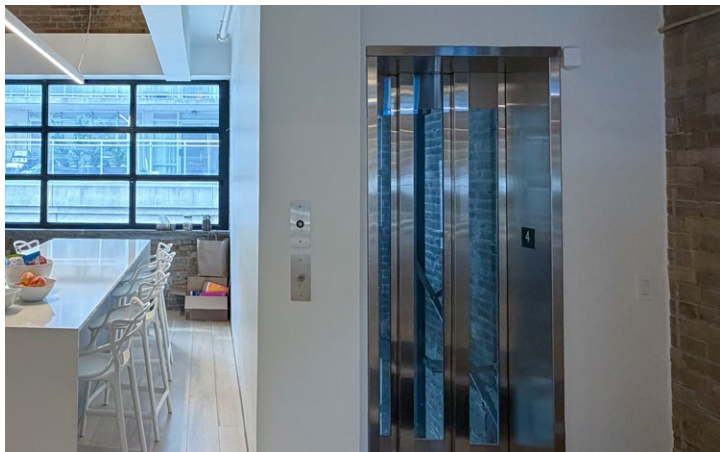
Brian Porter*
Senior Vice President
brian.porter@cbre.com
+1 416 847 3242

Callie Osler*
Senior Sales Associate
callie.osler@cbre.com
+1 647 943 4163

*Sales Representative

Listing Details

Floor	SIZE	AVAILABLE
3rd	2,501 SQ. FT.	MAY 1, 2026
4th	2,690 SQ. FT.	JULY 1, 2026



**Renovated boutique office building
– fully upgraded interiors & façade**

**Heritage feel with modern interior,
building, and security systems**

**Passenger elevator accessed from
the back of the building**

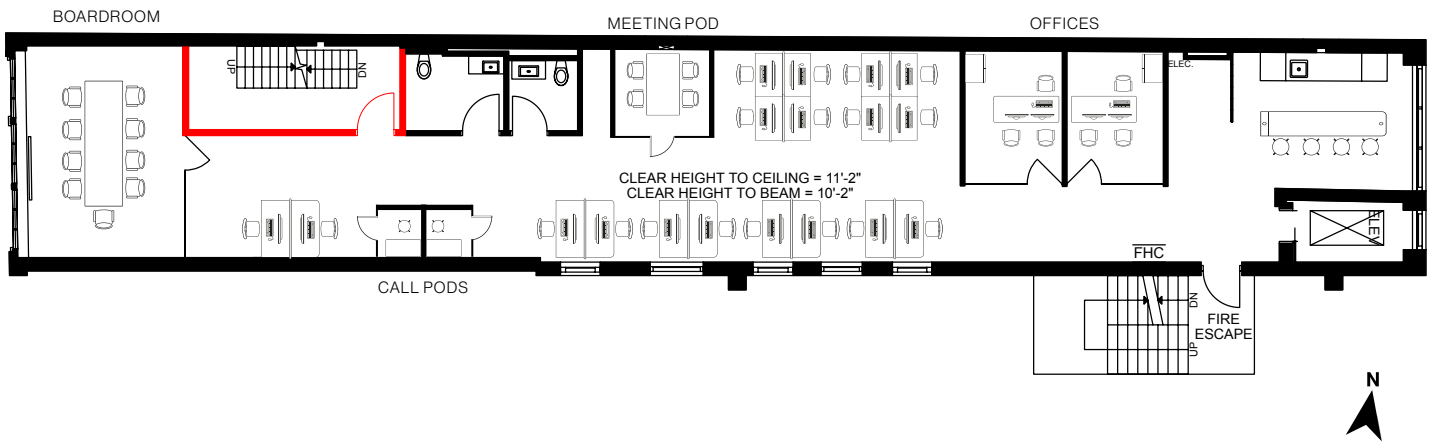
Fully Furnished

Rooftop Patio

Across from the Eaton Centre

Listing Details

Floor	3RD
Size	2,501 SQ. FT.
Additional Rent	\$14.53 PSF/ANNUM
Available	MAY 1, 2026



MODEL SUITE

2 OFFICES



LARGE GLASS BOARDROOM



18 WORKSTATIONS



KITCHEN



1 MEETING POD



PRIVATE WASHROOMS



2 CALL BOOTHS



ADDITIONAL STORAGE AVAILABLE



ADDITIONAL IMPROVEMENTS INCLUDE NEW

WINDOWS



ELECTRICAL & LED LIGHTING



HVAC



HARDWOOD FLOORS



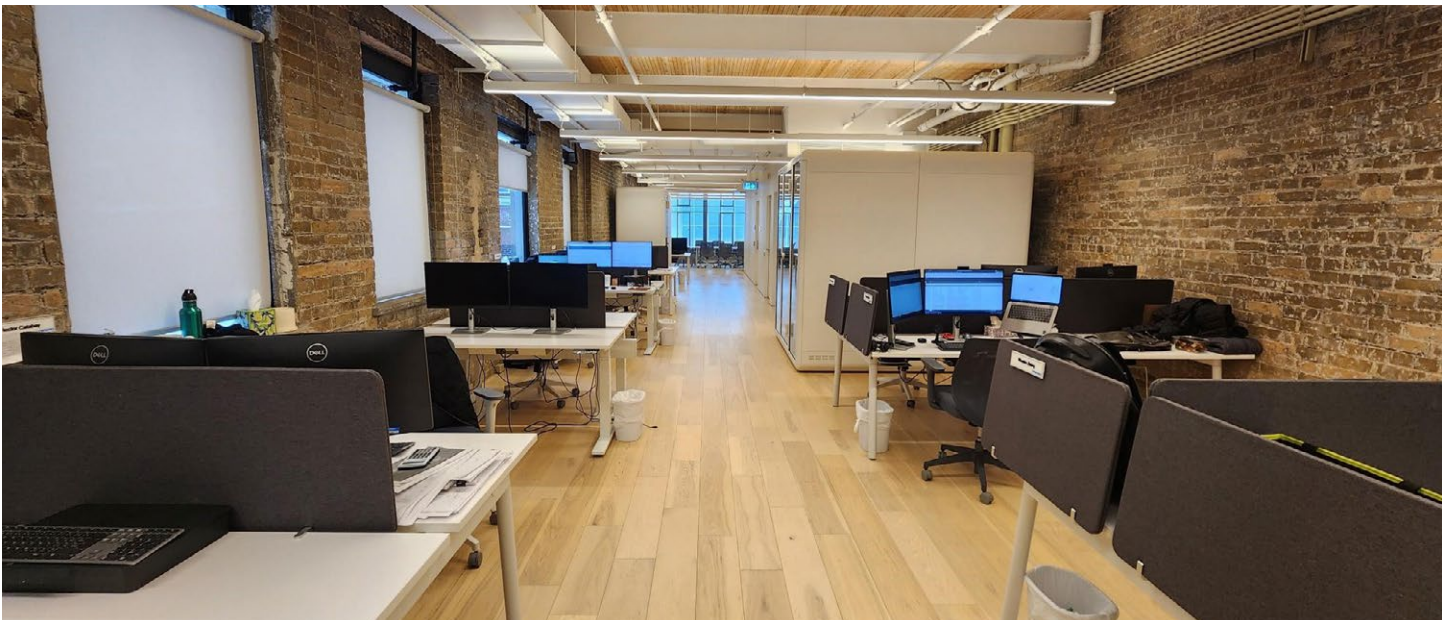
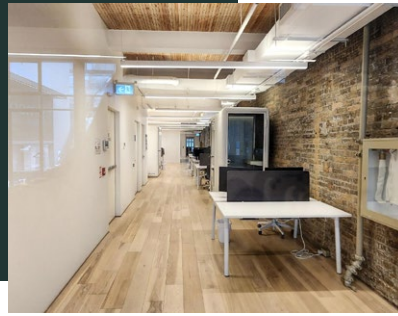
241

Yonge Street

CBRE

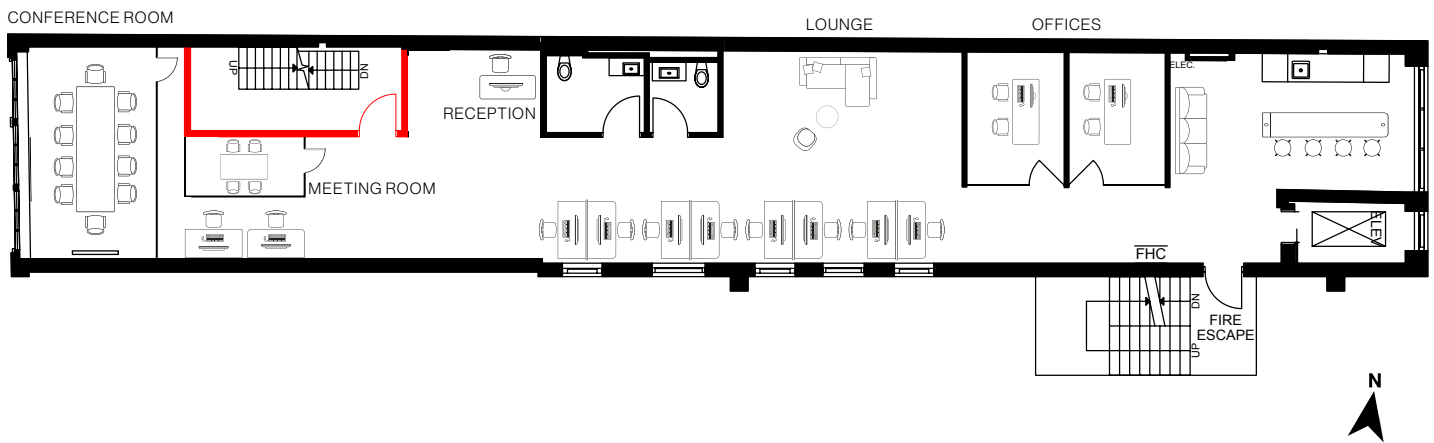
3rd Floor

2,501 Sq. Ft.



Listing Details

Floor	4TH
Size	2,690 SQ. FT.
Additional Rent	\$14.53 PSF/ANNUM
Available	JULY 1, 2026



MODEL SUITE

2 OFFICES



KITCHEN



LOUNGE & OPEN WORK SPACE AREA



PRIVATE WASHROOMS



1 MEETING POD



NATURAL LIGHT - MULTIPLE LARGE SKYLIGHTS



LARGE GLASS BOARDROOM



ADDITIONAL STORAGE AVAILABLE



ADDITIONAL IMPROVEMENTS INCLUDE NEW

WINDOWS



ELECTRICAL & LED LIGHTING



HVAC



HARDWOOD FLOORS



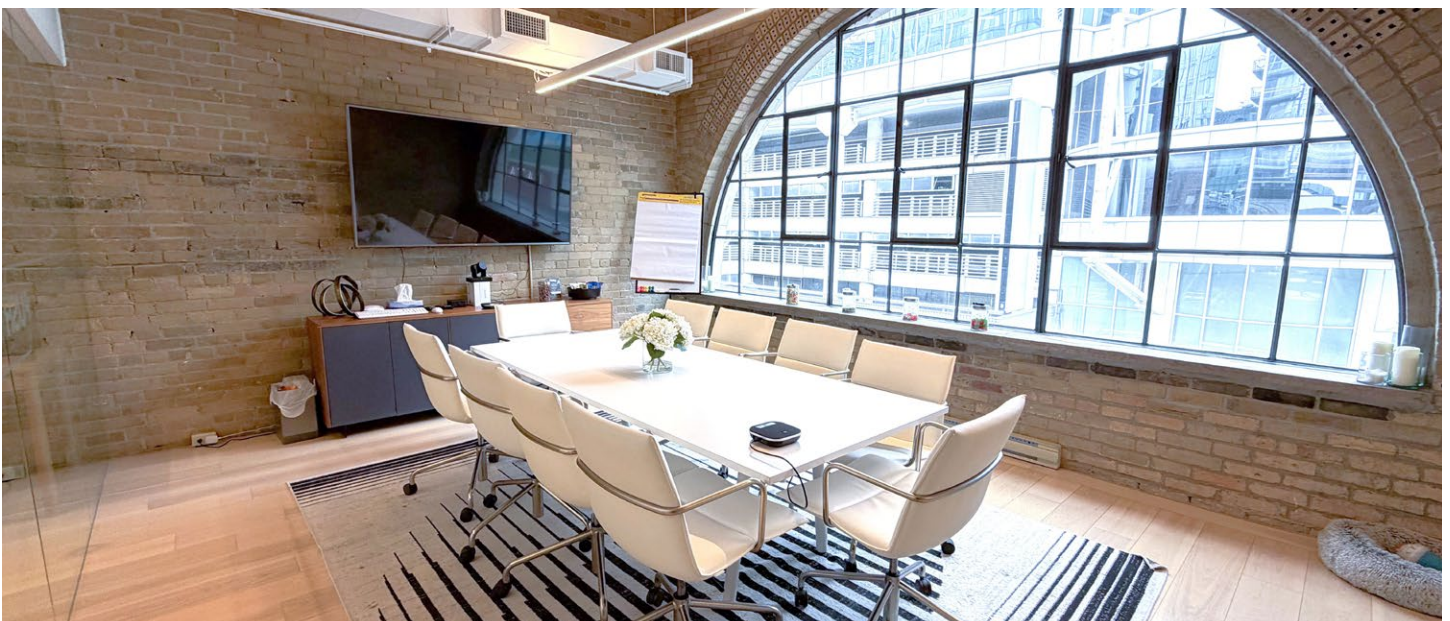
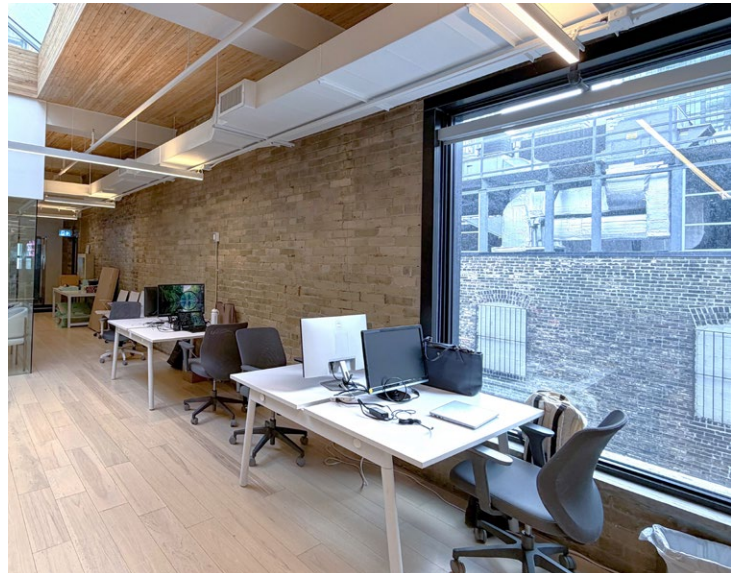
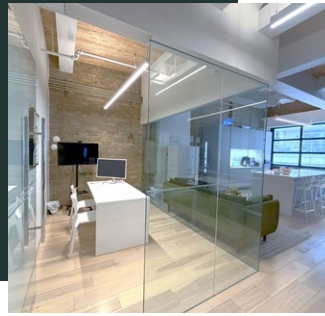
241

Yonge Street

CBRE


4th Floor

2,690 Sq. Ft.




Amenities


- 01 Roywoods
- 02 3 Brasseurs MicroBrewery
- 03 Trattoria Mercato
- 04 Twilight Cafe & Bar
- 05 Hokkaido Ramen Santouka
- 06 Fran's Restaurant
- 07 Sud Forna
- 08 Cactus Club Cafe
- 09 Chefs Hall
- 10 Sweat and Tonic
- 11 Adelaide Club
- 12 GoodLife Fitness
- 13 Equinox
- 14 The Market by Long's
- 15 Metro
- 16 NoFrills



100
WALK SCORE



100
TRANSIT SCORE



65
BIKE SCORE



- Yonge-University Subway Line
- Streetcar
- Bus

241

— Yonge Street —

Brian Porter*

Senior Vice President
brian.porter@cbre.com
+1 416 847 3242

Callie Osler*

Senior Sales Associate
callie.osler@cbre.com
+1 647 943 4163

*Sales Representative