

FOR SALE

# WESTMORELAND DISTRIBUTION PARK NORTH

EAST HUNTINGDON TOWNSHIP, WESTMORELAND COUNTY, PA

PAD SITES FROM  
4.1 TO 21.4 ACRES



1 MILE



5 MILES



5 MILES

## CONTACT

ALICIA HENRY | Marketing Director  
724-830-3061 | [ahenry@westmorelandcountypa.gov](mailto:ahenry@westmorelandcountypa.gov)

**WCIDC**  
WESTMORELAND COUNTY  
INDUSTRIAL DEVELOPMENT CORPORATION

FOR SALE

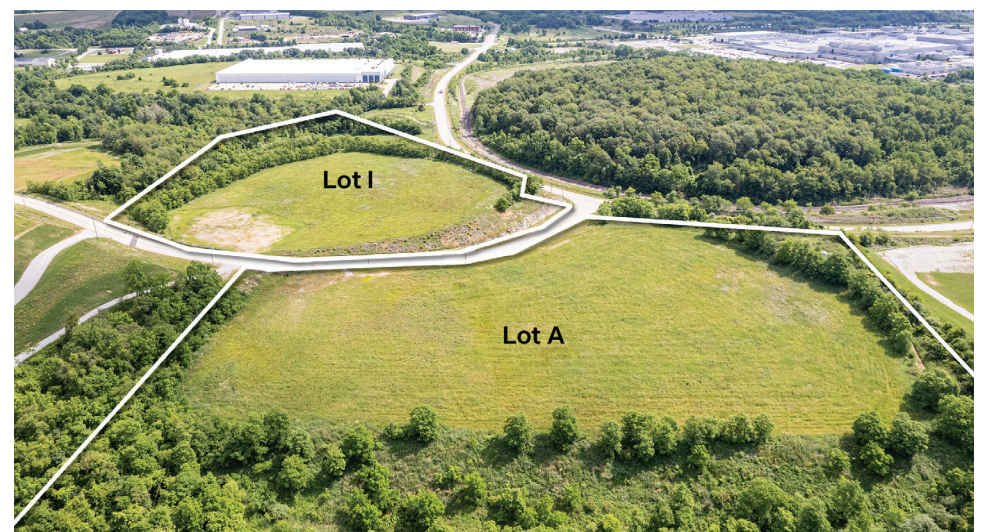
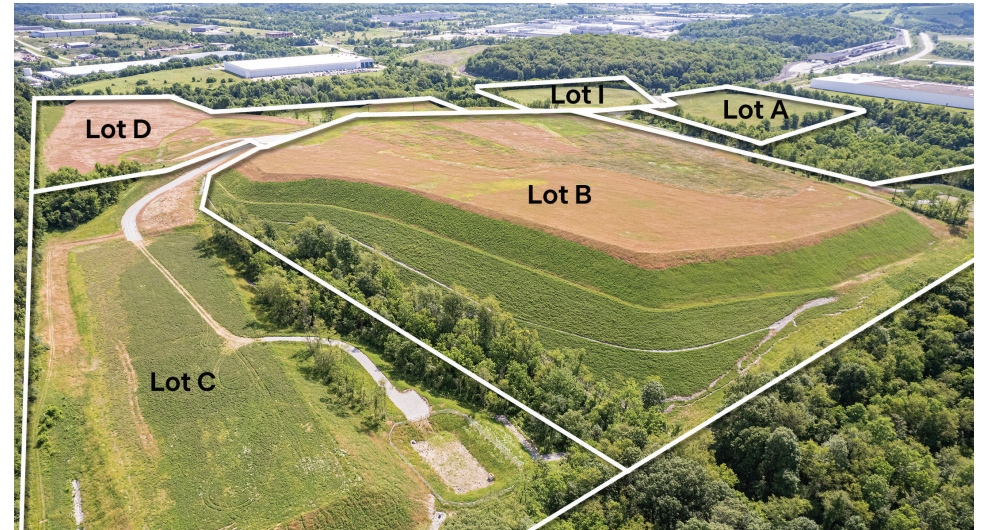
# WESTMORELAND DISTRIBUTION PARK NORTH

EAST HUNTINGDON TOWNSHIP, WESTMORELAND COUNTY, PA

PRIME LOCATION FOR  
INDUSTRIAL DEVELOPMENT

## PROPERTY DETAILS

LOT A	8.24-acre pad site
	15.25 total acres
	\$1,372,500
LOT B	21.4-acre pad site
	41.49 total acres
	\$3,734,100
LOT C	4.1-acre pad site
	11.90 total acres
	\$2,493,000
LOT D	10.4-acre pad site
	27.7 total acres
	\$1,071,000
LOT I	6.14-acre pad site
	9.89 total acres
	\$890,100



FOR SALE

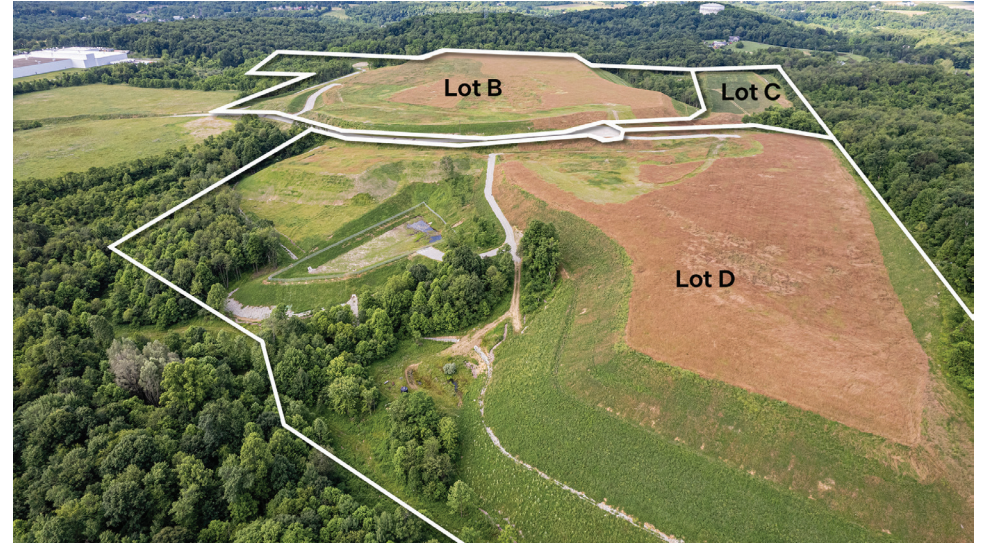
# WESTMORELAND DISTRIBUTION PARK NORTH

EAST HUNTINGDON TOWNSHIP, WESTMORELAND COUNTY, PA

## PARK DETAILS

### UTILITIES

ELECTRICAL PROVIDER	West Penn Power
ELECTRIC SERVICE	12kV at site; 25kV lines ~1.23 miles away
GAS PROVIDER	Peoples Natural Gas
GAS LINE SIZE	6"
WATER PROVIDER	Municipal Authority Westmoreland Co.
WATER LINE SIZE	8"
SEWAGE PROVIDER	Municipal Authority Westmoreland Co.
TELECOM PROVIDERS	Allegheny Communication Connect



### PARK HIGHLIGHTS

- Utilities at roadway
- East Huntingdon Township has no zoning restrictions
- Excellent access to I-70 & I-76/PA Turnpike
- Part of Westmoreland Technology Drive industrial complex
- Westmoreland Logistics Park intermodal facility within 2 miles
- Commercial lots also available



### CONTACT

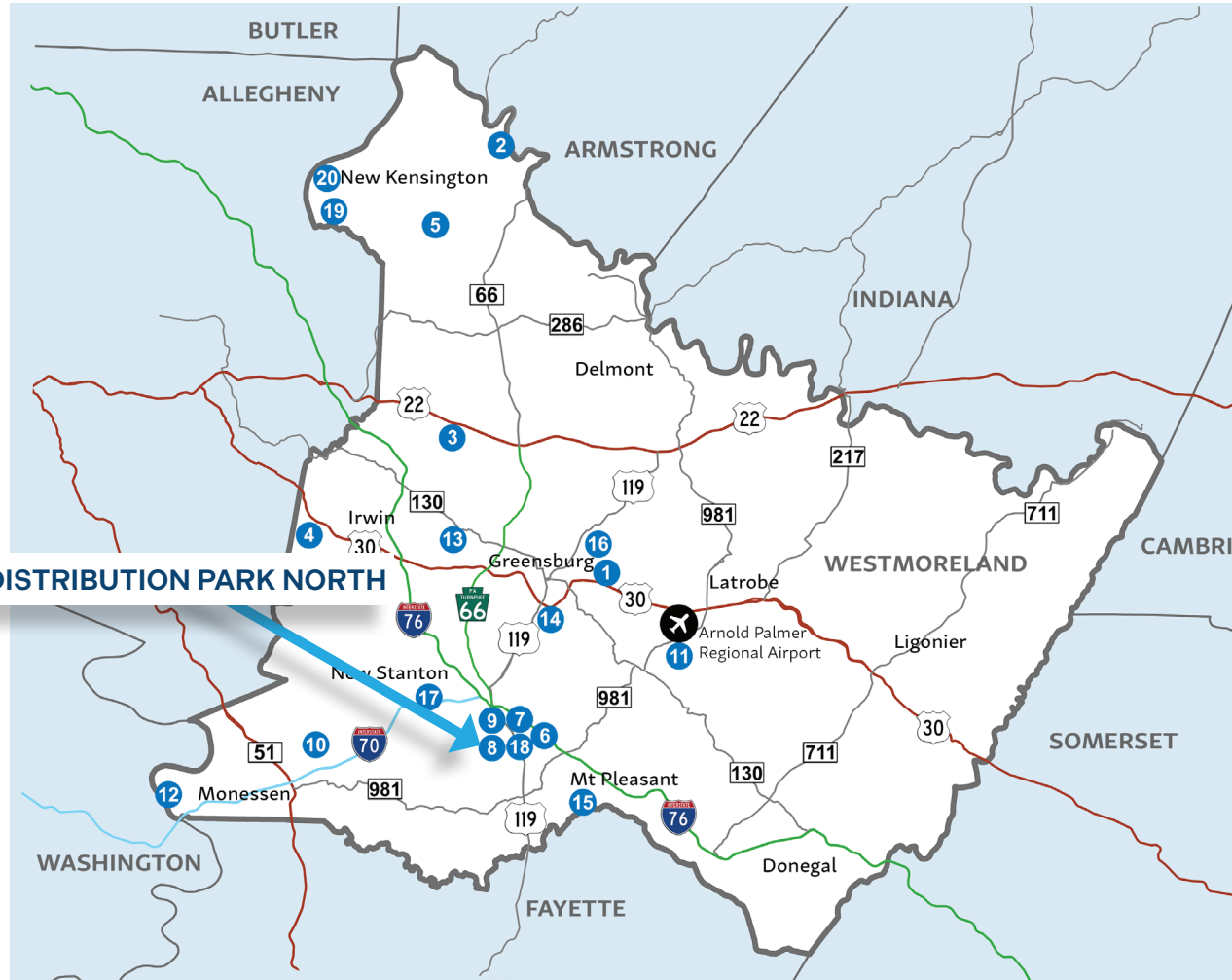
**ALICIA HENRY | Marketing Director**  
724-830-3061 | [ahenry@westmorelandcountypa.gov](mailto:ahenry@westmorelandcountypa.gov)

**NOTE:** Information shown is purported to be from reliable sources. No representation is made to the accuracy thereof, and is submitted subject to errors, omissions, change in price, prior sale, withdrawal notice, or other conditions.

# WCIDC BUSINESS PARKS & ASSETS

WESTMORELAND COUNTY, PA

## WESTMORELAND INDUSTRIAL PARK SYSTEM



- 1 Westmoreland County Industrial Park I
- 2 Westmoreland County Industrial Park II
- 3 Westmoreland County Industrial Park III
- 4 Westmoreland County Industrial Park IV
- 5 Westmoreland Business & Research Park
- 6 Westmoreland Technology Park I
- 7 Westmoreland Technology Park II
- 8 Westmoreland Distribution Park East/West
- 9 Westmoreland Distribution Park North
- 10 I-70 Industrial Park
- 11 Westmoreland County Airpark
- 12 Monessen Riverfront Industrial Park
- 13 Jeannette Industrial Park
- 14 South Greensburg Commons
- 15 Mount Pleasant Glass Centre
- 16 GreenForge Building
- 17 Commerce Crossing at Westmoreland
- 18 Westmoreland Logistics Park
- 19 The Corner
- 20 New Kensington Advanced Manufacturing Park



### CONTACT

ALICIA HENRY | Marketing Director  
724-830-3061 | ahenry@westmorelandcountypa.gov

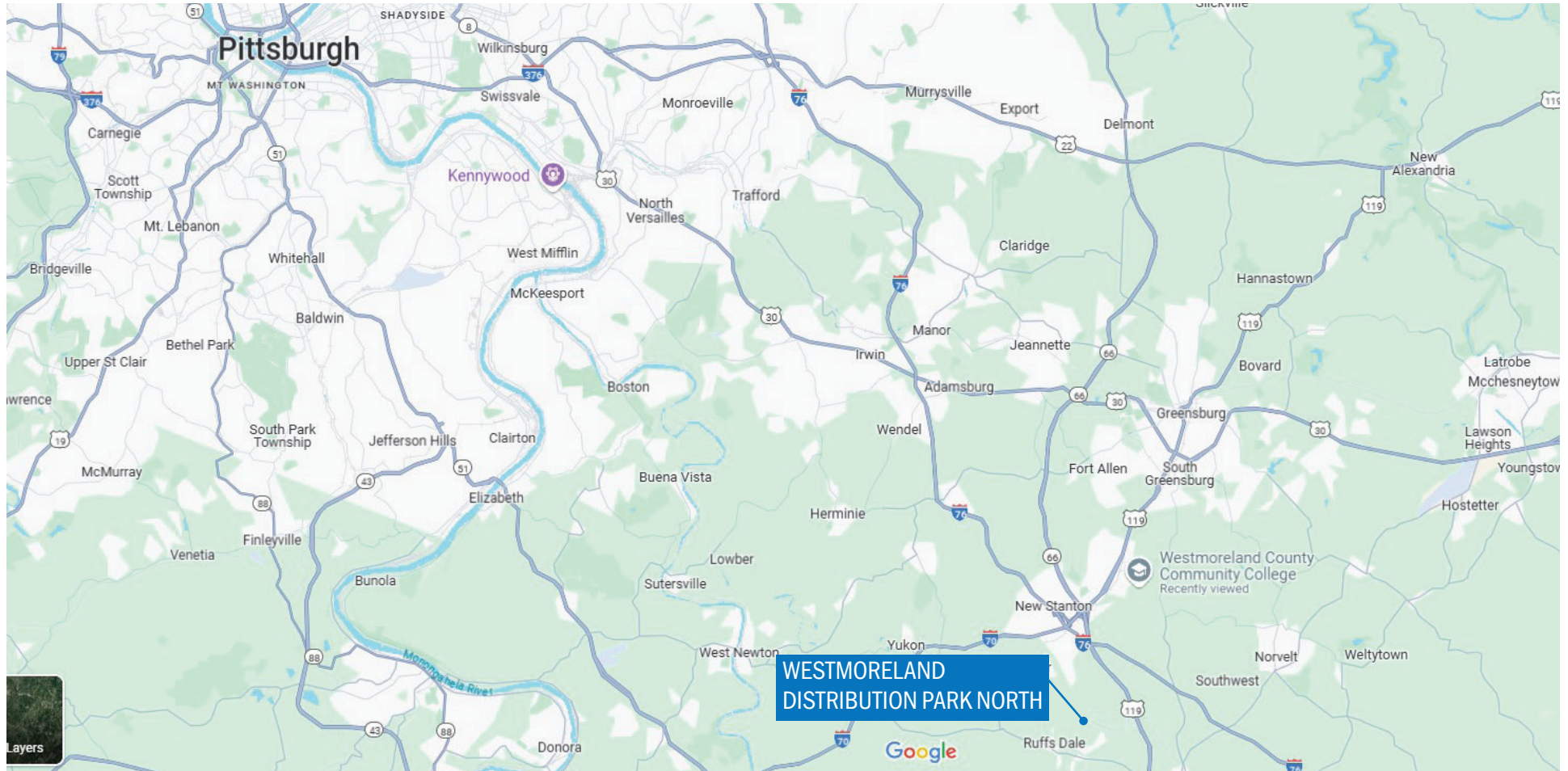
NOTE: Information shown is purported to be from reliable sources. No representation is made to the accuracy thereof, and is submitted subject to errors, omissions, change in price, prior sale, withdrawal notice, or other conditions.

FOR SALE

# WESTMORELAND DISTRIBUTION PARK NORTH

EAST HUNTINGDON TOWNSHIP, WESTMORELAND COUNTY, PA

## REGIONAL MAP



### CONTACT

**ALICIA HENRY | Marketing Director**  
724-830-3061 | [ahenry@westmorelandcountypa.gov](mailto:ahenry@westmorelandcountypa.gov)

**NOTE:** Information shown is purported to be from reliable sources. No representation is made to the accuracy thereof, and is submitted subject to errors, omissions, change in price, prior sale, withdrawal notice, or other conditions.

FOR SALE

# WESTMORELAND DISTRIBUTION PARK NORTH

EAST HUNTINGDON TOWNSHIP, WESTMORELAND COUNTY, PA

PRIME LOCATION FOR  
INDUSTRIAL DEVELOPMENT



## CONTACT

**ALICIA HENRY | Marketing Director**  
724-830-3061 | [ahenry@westmorelandcountypa.gov](mailto:ahenry@westmorelandcountypa.gov)

**NOTE:** Information shown is purported to be from reliable sources. No representation is made to the accuracy thereof, and is submitted subject to errors, omissions, change in price, prior sale, withdrawal notice, or other conditions.