

HARLEM
HDI
DENTURES AND IMPLANTS

1825
MADISON AVE
MANHATTAN, NY

FULLY BUILT OUT,
4-OPERATORY,
TURN-KEY
DENTAL OFFICE

PROPERTY HIGHLIGHTS

1825 MADISON AVE
Manhattan, NY



BUILT OUT DENTAL OFFICE
Turn-key, move-in condition

Available Space: **1,600 SF**

- Four (4) fully-built out exam rooms
- Existing dental infrastructure
- X-Ray room & lab
- Three (3) private offices
- Laboratory
- Two (2) private restrooms
- Reception/waiting area
- Immediate occupancy for dental or specialty medical user
- Rare opportunity to lease an existing dental practice buildout in Manhattan



Ideal For:

- General Dentistry
- Orthodontics
- Pediatric Dentistry
- Dental Group / DSO expansion
- Periodontics
- Endodontics
- Oral Surgery

MAP & LOCATION HIGHLIGHTS



PRIME HARLEM/UPPER MANHATTAN LOCATION

- Surrounded by dense residential patient population
- Strong daytime traffic
- Near major medical institutions including Mount Sinai Hospital
- Established medical and healthcare corridor
- Excellent subway and bus access for patients & staff
- Strong walk-in and referral potential from nearby providers
- Central Upper Manhattan / Harlem healthcare location

DEMOGRAPHICS 1 MILE RADIUS



Total Households
84,394

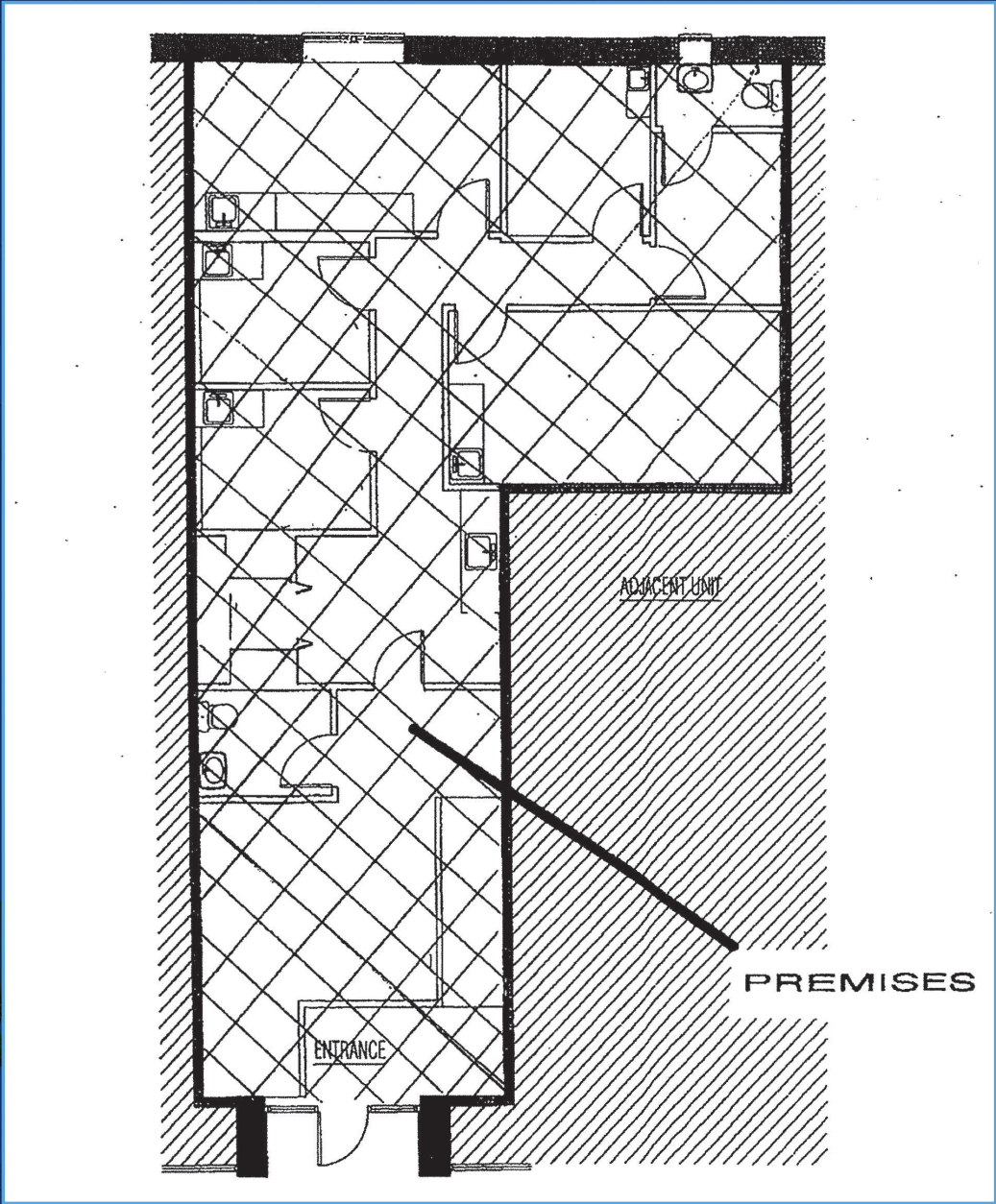


Total Population
194,958



Average HH Income
\$89,447

FLOOR PLAN



PROPERTY PHOTOS - INTERIOR



PROPERTY PHOTOS - INTERIOR



PROPERTY PHOTOS - EXTERIOR & NEIGHBORING TENANTS





Team
Lizzack-Horning

👤 For more information

Darren M. Lizzack, MSRE
Principal

☎ 201 906 4376

✉ dlizzack@theclinicalgroup.com

Randy Horning, MSRE, SIOR
Principal

☎ 201 739 9311

✉ rhorning@theclinicalgroup.com

Follow us!

🌐 @TheClinicalGroup

🌐 TheClinicalGroup.com

☎ 855-CLINGRP

✉ info@TheClinicalGroup.com