

# FOR LEASE

3,381 SF | \$3.25-\$3.75/SF/MO. NNN

## Class A Office/Medical Development in NorthWest Crossing

2219 NW Labiche Lane, Bend, OR 97703



### PROPERTY DETAILS

<del>Suite A:</del>	<del>3,032 SF</del>	<b>LEASED</b>
Suite B:	3,381 SF	
Lease Rate:	\$3.25-\$3.75/SF/Mo. NNN	
NNNs:	Est. at \$0.90/SF/Mo.	
Zoning:	Commercial Limited (CL)	

### HIGHLIGHTS

- Class A office/medical building on Bend's west side
- Great location near NorthWest Crossing shops & restaurants
- Signage available on interior and exterior of building
- 22 onsite parking spaces plus street parking
- NorthWest Crossing is home to more than 1,550 housing units stretching over 486 acres

**Bruce Churchill, Principal Broker**  
**Jay Lyons, SIOR, CCIM | Grant Schultz, SIOR, CCIM**  
600 SW Columbia St., Ste. 6100 | Bend, OR 97702  
**541.383.2444** | [www.CompassCommercial.com](http://www.CompassCommercial.com)

**COMPASS**  
COMMERCIAL

**REAL  
ESTATE  
SERVICES**

# FOR LEASE

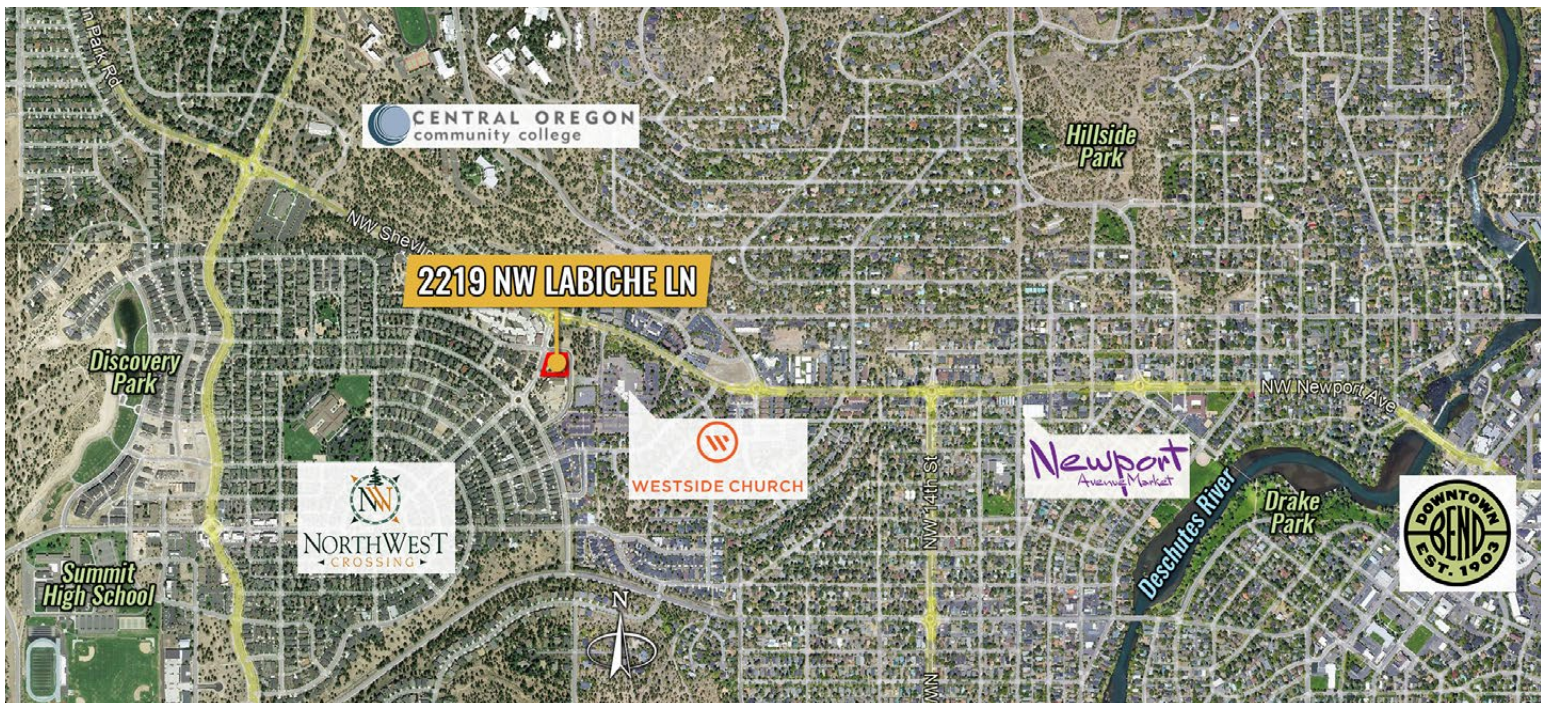
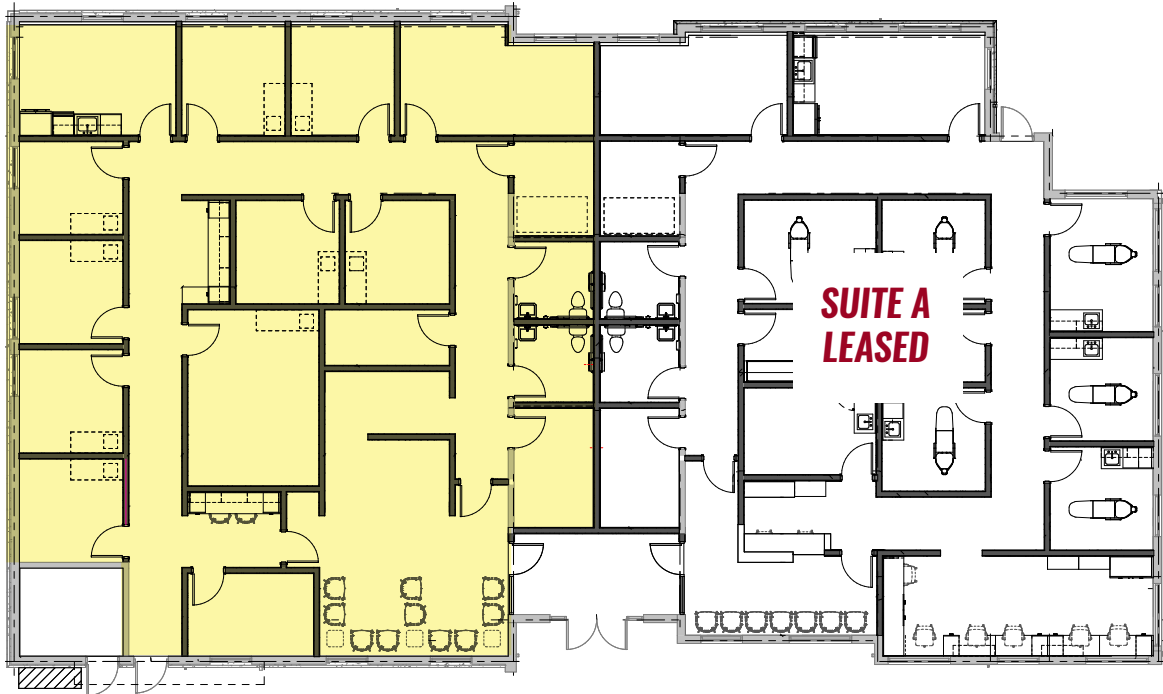
3,381 SF | \$3.25-\$3.75/SF/MO. NNN

## Class A Office/Medical Development in NorthWest Crossing

2219 NW Labiche Lane, Bend, OR 97703

### CONCEPTUAL FLOOR PLAN

**SUITE B**  
3,381 SF



Brokers are licensed in the state of Oregon. This information has been furnished from sources we deem reliable, but for which we assume no liability. This is an exclusive listing. The information contained herein is given in confidence with the understanding that all negotiations pertaining to this property be handled through Compass Commercial Real Estate Services. All measurements are approximate.



**Jay Lyons, SIOR, CCIM**  
Partner, Principal Broker  
Cell 541.410.6519  
jlyons@compasscommercial.com



**Grant Schultz, SIOR, CCIM**  
Broker  
Cell 541.480.9873  
gschultz@compasscommercial.com



**Bruce Churchill**  
Principal Broker  
Cell 541.280.7560  
bchurchill@compasscommercial.com

**COMPASS**  
COMMERCIAL  
REAL ESTATE  
SERVICES