

# BRETTWOOD VILLAGE SHOPPING CENTER

NEC Pershing Rd and Water St / Decatur, IL



**MID-AMERICA<sup>®</sup>**  
Asset Management, Inc.

491-31,902 SF AVAILABLE



RETAIL OPPORTUNITY

# BRETTWOOD VILLAGE SHOPPING CENTER



## Address

NEC Pershing Rd & Water St  
Decatur, IL 62526

## Features

- Well-located grocery anchored shopping center in Decatur with nearly 72,000 residents
- Small shop and anchor space available
- Proximate location to Hickory Point Mall and I-72

## Availability

482 - 31,902 SF

## Demographics

	5 Mile	10 Miles	15 Miles
POPULATION	74,276	98,307	108,614
HOUSEHOLDS	31,795	41,575	45,702
AVG HOUSEHOLD INCOME	\$62,488	\$69,446	\$70,506
DAYTIME POPULATION	82,157	103,023	111,246

## Co-Tenants

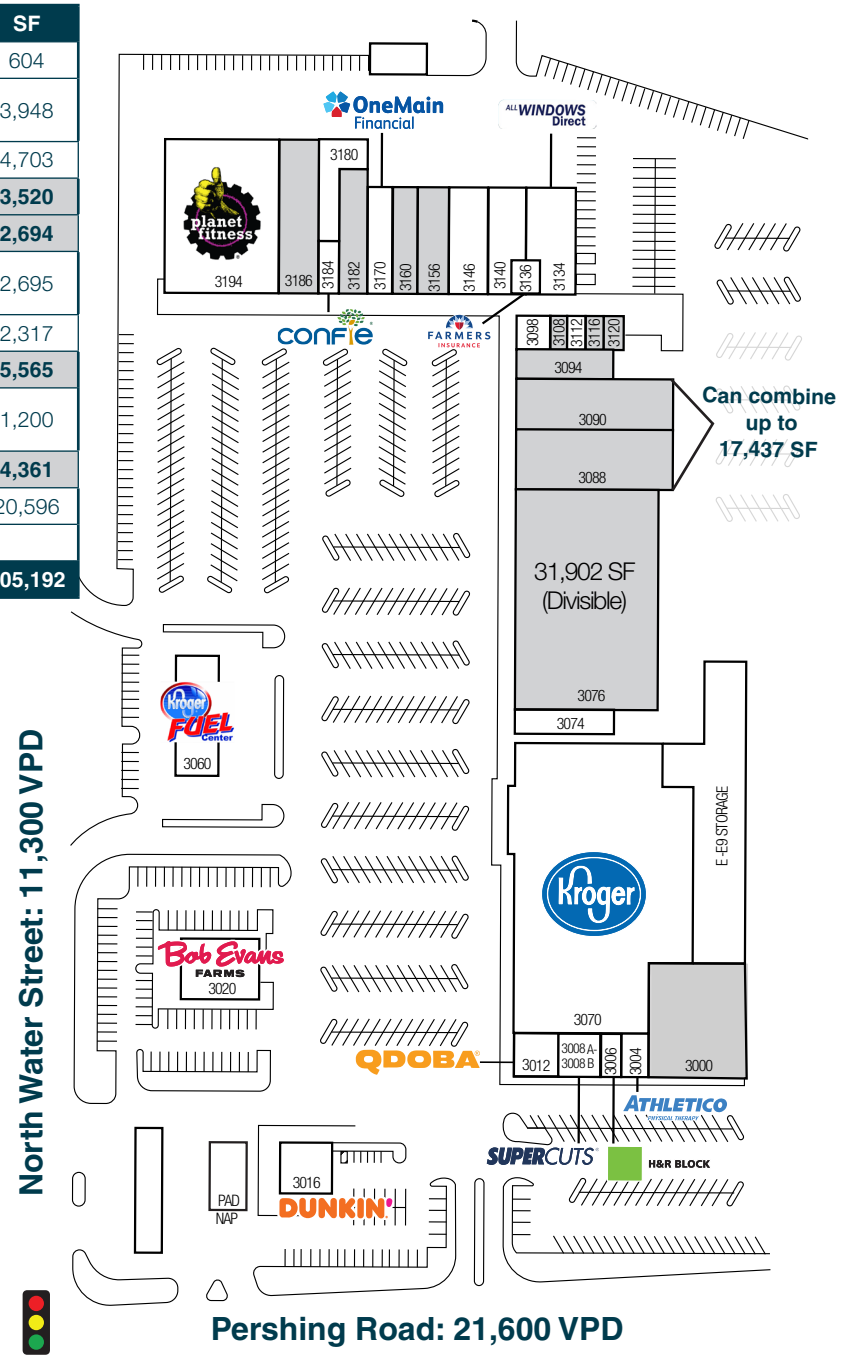


# BRETTWOOD VILLAGE SHOPPING CENTER



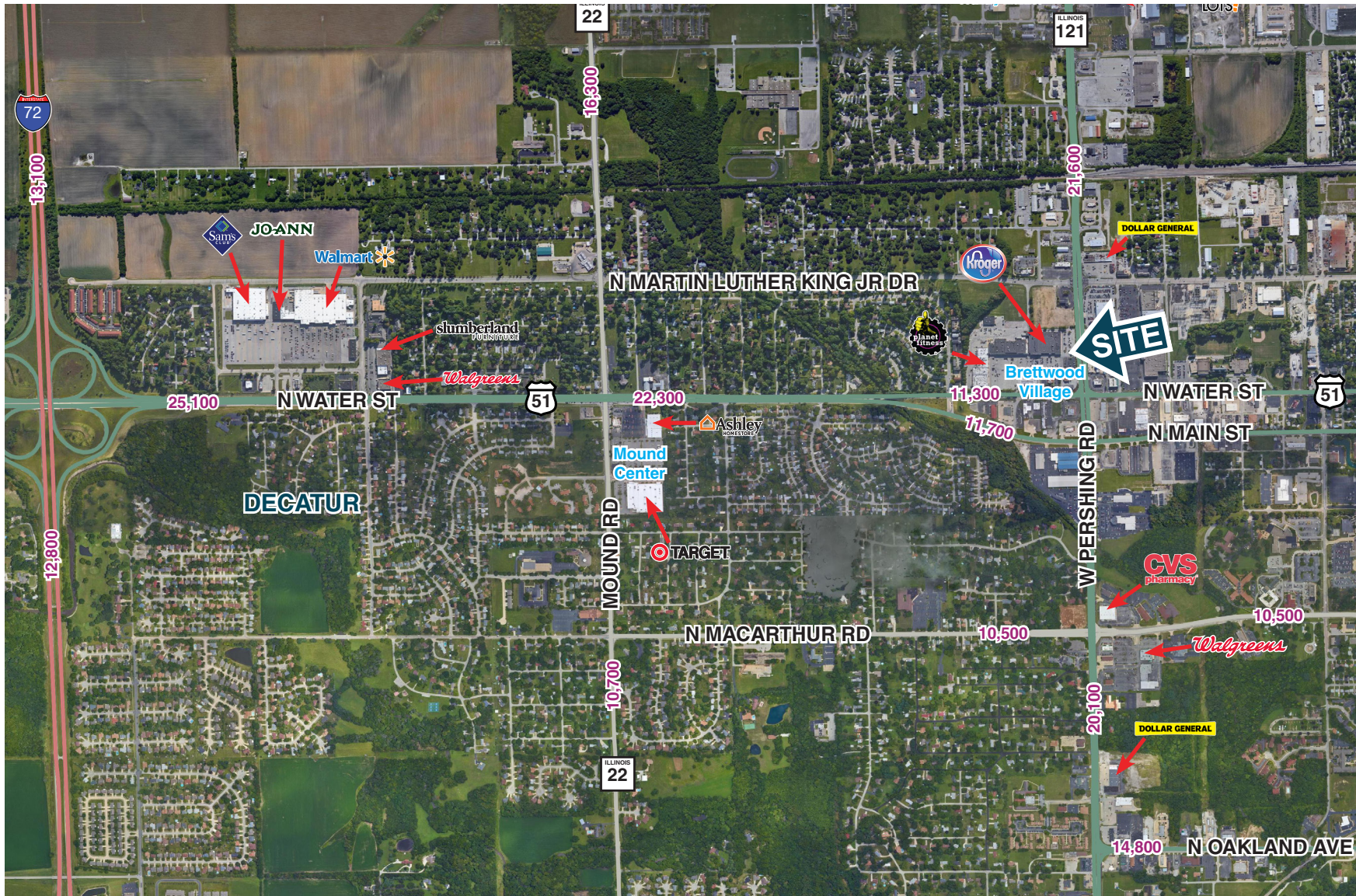
Suite	Space	Tenant	SF
<b>3000</b>	<b>E 9A</b>	<b>Available</b>	<b>6,387</b>
3004	E 9	Athletico	3,327
3006	E 8	H&R Block	1,416
3008 A-3008 B	E 6-7	Supercuts	2,000
3012	E 4-5	Qdoba	2,645
3016	F	Dunkin'	3,351
3020	G	Bob Evans	5,000
3060	Outlot	Kroger Fuel Station	
3070	E 1-2	Kroger	55,277
3074	D 1	Asia House	2,150
<b>3076</b>	<b>D 2-7</b>	<b>Available</b>	<b>31,902</b>
<b>3088</b>	<b>C 1B</b>	<b>Available</b>	<b>9,760</b>
<b>3090</b>	<b>C 1A</b>	<b>Available</b>	<b>7,677</b>
<b>3094</b>	<b>C 2</b>	<b>Available</b>	<b>1,220</b>
3098	C 3-5	Ruby's II	1,350
<b>3108</b>	<b>C 6</b>	<b>Available</b>	<b>491</b>
3112	C 7	Management Office	386
<b>3116</b>	<b>C 8</b>	<b>Available</b>	<b>482</b>
<b>3120</b>	<b>C 9</b>	<b>Available</b>	<b>607</b>
3134	B 1	All Windows Direct	5,289

Suite	Space	Tenant	SF
3136	B 2	Farmer's Insurance	604
3140	B 3	Armed Forces Recruiting Center	3,948
3146	B 4	JS Nail Spa	4,703
<b>3156</b>	<b>B 5</b>	<b>Available</b>	<b>3,520</b>
<b>3160</b>	<b>B 6</b>	<b>Available</b>	<b>2,694</b>
3170	B 7	OneMain Financial Group	2,695
3180	A 1D	Storage	2,317
<b>3182</b>	<b>A 1A</b>	<b>Available</b>	<b>5,565</b>
3184	A 1B	Confie Administrative Services	1,200
<b>3186</b>	<b>A 1C</b>	<b>Available</b>	<b>4,361</b>
3194	A 3	Planet Fitness	20,596
PAD		Shell	
<b>Total GLA</b>			<b>205,192</b>



**SITE PLAN**

# BRETTWOOD VILLAGE SHOPPING CENTER



# BRETTWOOD VILLAGE SHOPPING CENTER



Paige  
Winkels

630.954.7221

[PWinkels@MidAmericaGrp.com](mailto:PWinkels@MidAmericaGrp.com)

Brooke  
Spinell

630.954.7220

[BSpinell@MidAmericaGrp.com](mailto:BSpinell@MidAmericaGrp.com)



One Parkview Plaza, 9th Floor  
Oakbrook Terrace, Illinois 60181  
630.954.7300

[MidAmericaGrp.com](http://MidAmericaGrp.com)

CONTACT