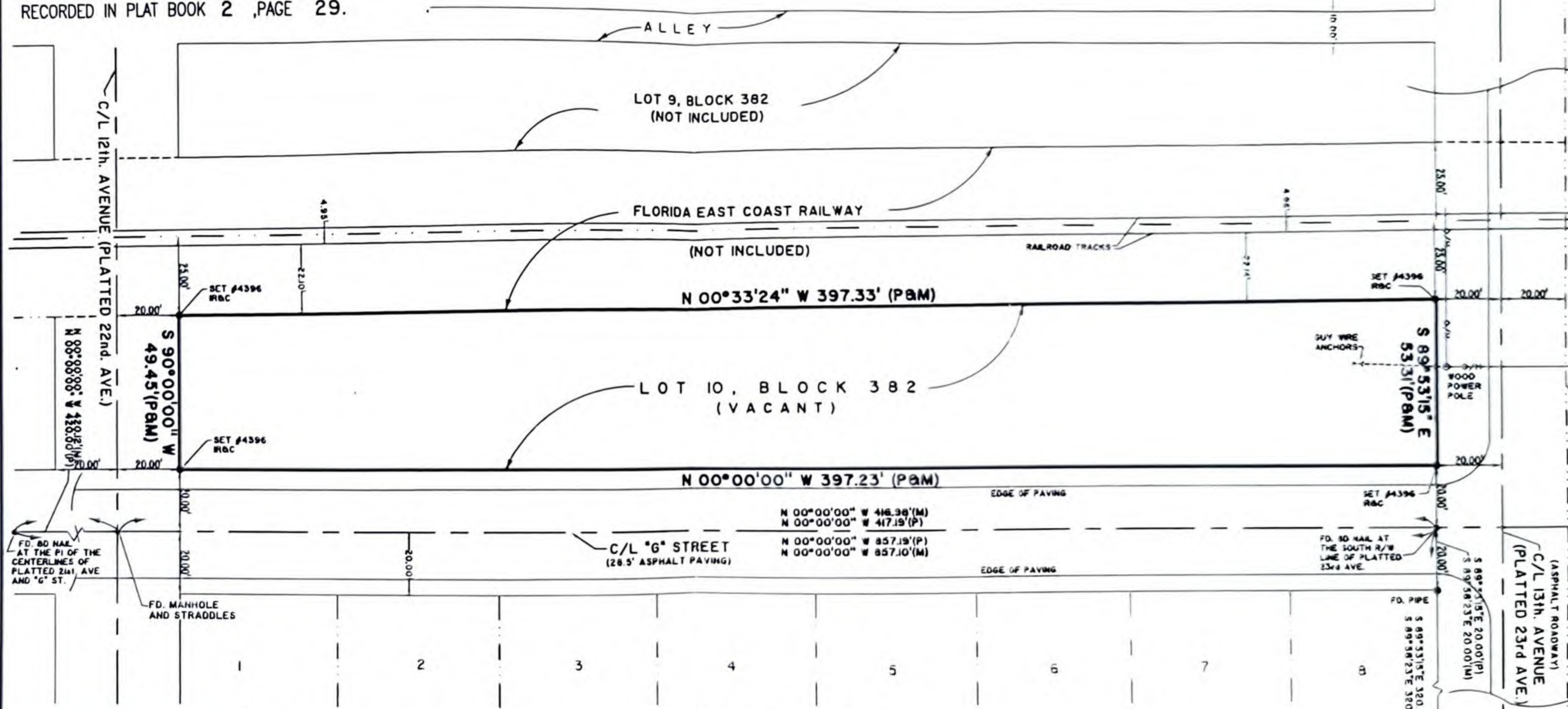
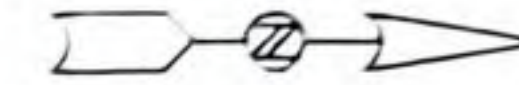
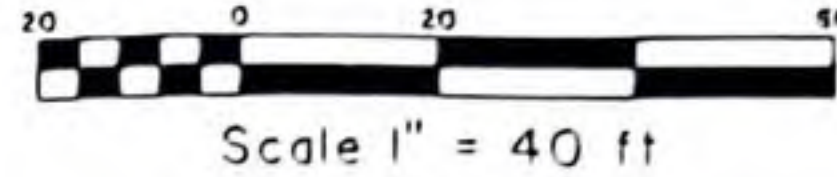


LEGAL DESCRIPTION

LOT 10, BLOCK 382, PALM BEACH FARMS
 COMPANY PLAT NO. 2, LUCERNE TOWNSITE,
 ACCORDING TO THE PLAT THEREOF ON FILE IN THE
 OFFICE OF THE CLERK OF THE CIRCUIT COURT,
 IN AND FOR PALM BEACH COUNTY, FLORIDA.
 RECORDED IN PLAT BOOK 2 ,PAGE 29.



LEGEND

P.C.P.	PERMANENT CONTROL POINT
P.R.M.	PERMANENT REFERENCE MONUMENT
I.R. & C.	IRON ROD & CAP
I.R.	IRON ROD (NO NUMBER)
I.P.	IRON PIPE (NO NUMBER)
C.M.	CONCRETE MONUMENT
P.N.	SURVEY NAIL
N. & T.I.	NAIL & TIN TAG
P.C.	POINT OF CURVATURE
P.T.	POINT OF TANGENCY
P.C.C.	POINT OF COMPOUND CURVATURE
P.R.C.	POINT OF REVERSED CURVATURE
P.I.	POINT OF INTERSECTION
C.	CALCULATED
M.	MEASURED

LOTS 1 THROUGH 8, BLOCK 380
 (NOT INCLUDED)

C/L "H" STREET