

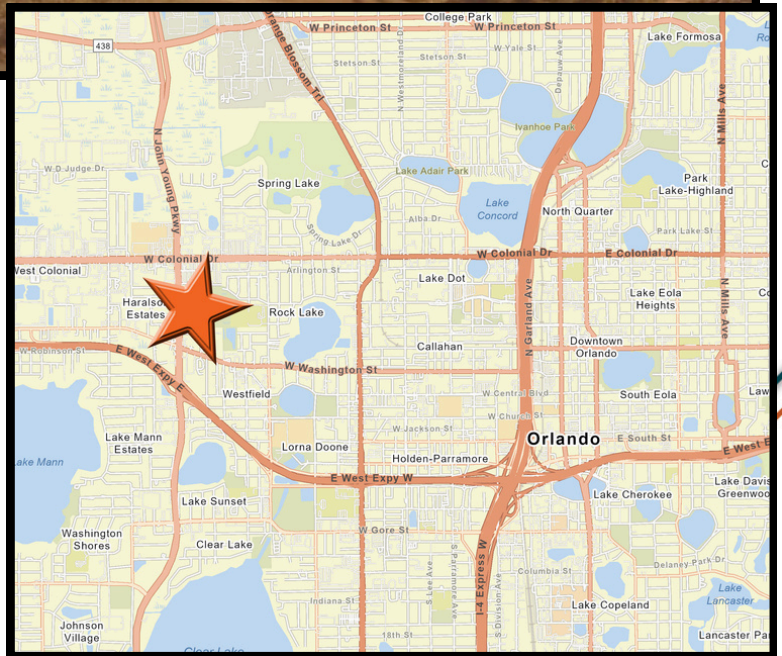
CENTRALLY LOCATED ORLANDO WAREHOUSE FOR SALE

OFFERED AT \$2,250,000

637 Triumph Ct.
Orlando, FL 32805

**C-3 ZONED INDUSTRIAL
8,275 +/- SQ. FT CENTRAL
ORLANDO
WAREHOUSE & OFFICE
W/FENCED YARD**

**DOCK-HIGH & GRADE DOORS
16' CLEAR HEIGHT
3 PHASE 600 AMPS
FENCED OUTSIDE STORAGE
.59 ACRES
C-3 ZONING (ORANGE CO.)**



Contact:

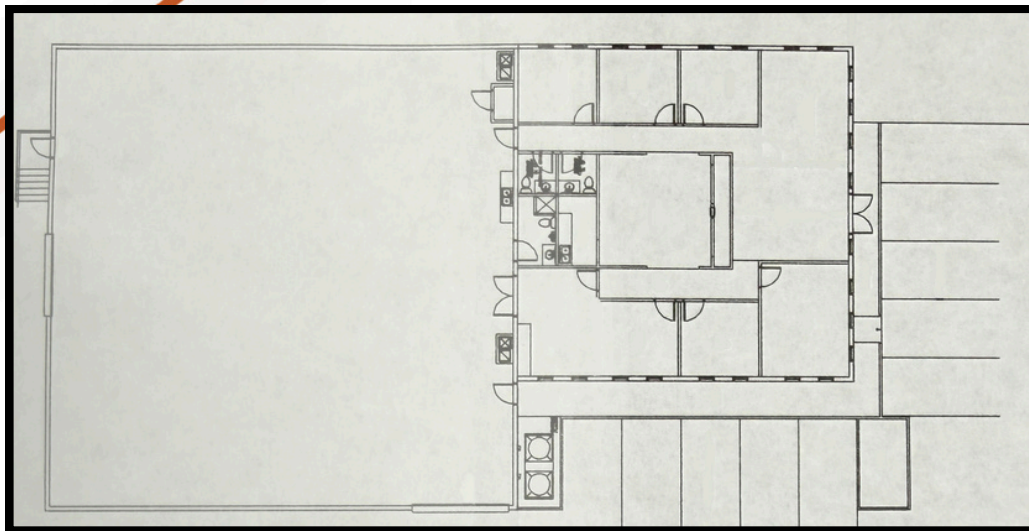
Scott Lloyd CCIM, RPA
Scott@LloydCA.com | Cell: 407-963-7558
18 W. Pine St. | Orlando, FL 32801

COMMERCIAL
LLOYD
ADVISORS

CENTRALLY LOCATED ORLANDO WAREHOUSE FOR SALE



637 Triumph Ct. Orlando, FL 32805



- DOCK-HIGH DOOR (10'x12')
- GRADE DOOR (14' X 13')
- 16' CLEAR HEIGHT (CENTER)
- 3 PHASE / 600 AMPS
- APPROX 2,565 SF OFFICE
- INSTANT ACCESS TO SR 408 & SR 50, 2.7 MI FROM I-4
- CONVENIENT TO ACCESS TO ALL OF METRO ORLANDO
- EXTREMELY RARE PURCHASE OPPORTUNITY
- IDEAL FOR CONTRACTORS, AUTO/FLEET SERVICE, LAST MILE LOGISTICS & FOOD/HOSPITALITY SUPPLIERS

OFFERED AT \$2,250,000

**PLEASE DO NOT DISTURB
TENANT**

- CONTACT BROKER -

Contact:

Scott Lloyd CCIM, RPA

Scott@LloydCA.com | Cell: 407-963-7558

18 W. Pine St. | Orlando, FL 32801

COMMERCIAL
LLOYD
ADVISORS