

10100 West Lake Parkway

Houston, TX

Key Facts

Property type Industrial space

Building size 648,720 SF

Space available 648,720 SF



Contact Us

Learn more about this property or schedule a tour by reaching out to our local investment and leasing officer.

Lexie Curry

+1 (281) 635-4548

lexie.curry@eqtpartners.com

10100 West Lake Parkway

Houston, TX

BUILDING SPECIFICATIONS

Available Size: 648,720 SF

Office: 3,492 SF

Clear Height: 36'

Loading Type: Cross-Dock

Truck Court Depth: 190'

Overhead Dock-High Doors: 119 (9' x 10')

Drive-In Doors: 4

Trailer Stalls: 168

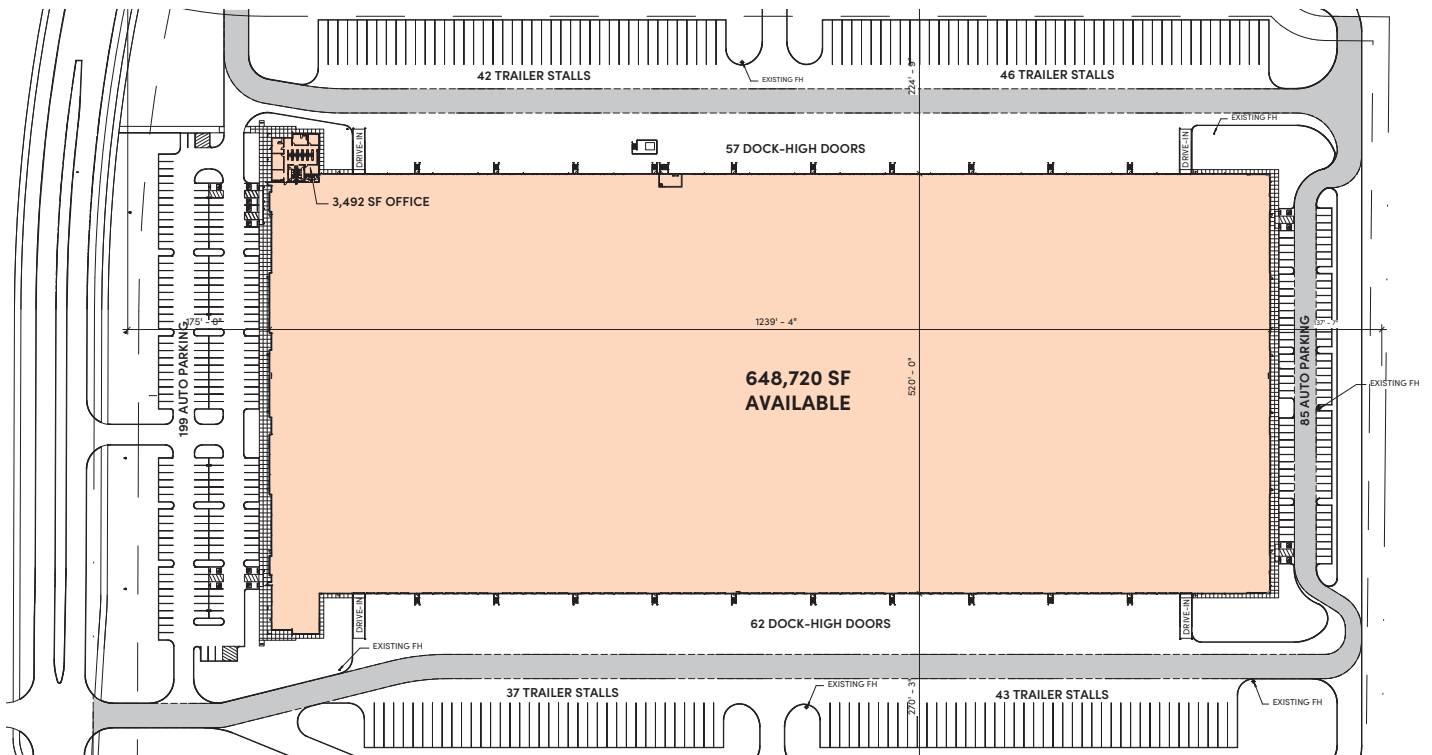
Auto Parking: 284

Power: 2,000 kVA transformer, sized for 4,000 amps

Fire Protection: ESFR sprinkler system

56' x 50 column spacing

7" concrete slab on grade - 4000 PSI



Contact Us

Learn more about this property or schedule a tour by reaching out to our local investment and leasing officer.

Lexie Curry

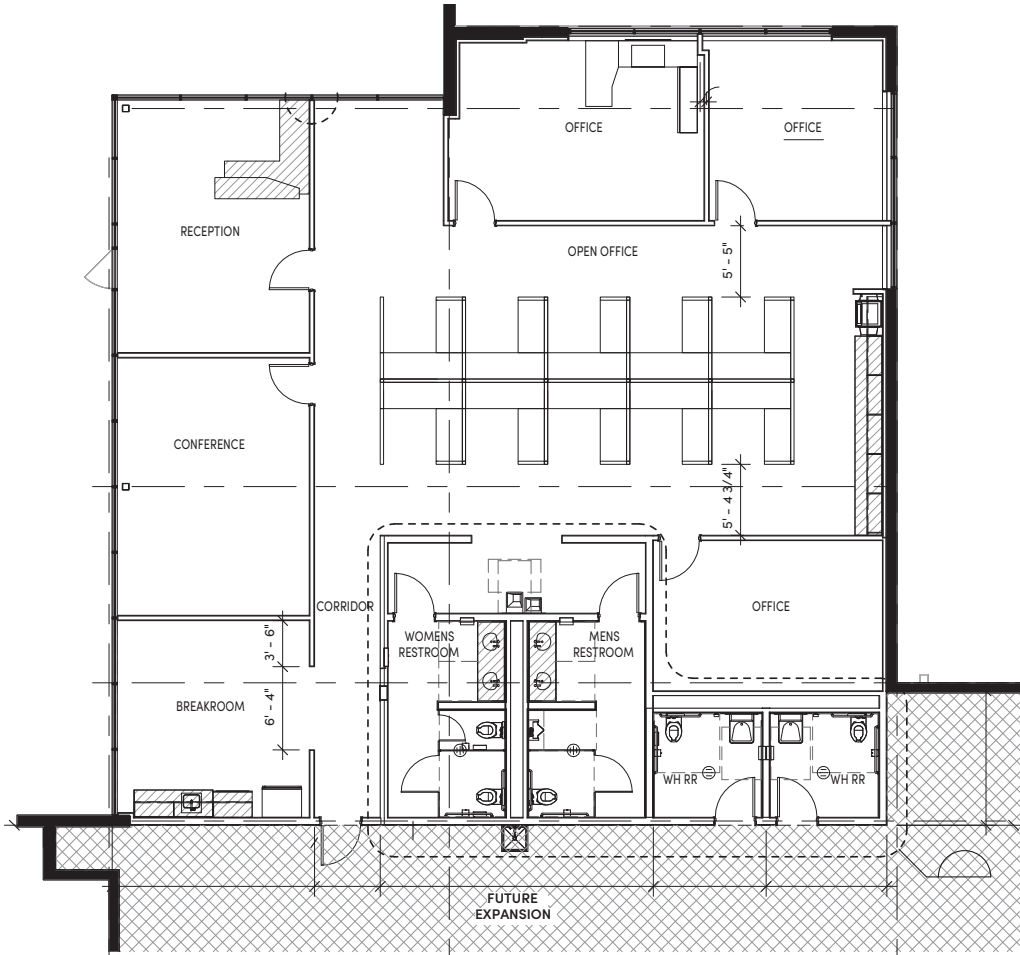
+1 (281) 635-4548

lexie.curry@eqtpartners.com

10100 West Lake Parkway

Houston, TX

OFFICE PLAN



Contact Us

Learn more about this property or schedule a tour by reaching out to our local investment and leasing officer.

Lexie Curry

+1 (281) 635-4548

lexie.curry@eqtpartners.com

10100 West Lake Parkway

Houston, TX



Contact Us

Learn more about this property or schedule a tour by reaching out to our local investment and leasing officer.

Lexie Curry

+1 (281) 635-4548

lexie.curry@eqtpartners.com