

SEC OF 23 MILE & HAYES DEVELOPMENT



MID-AMERICA[®]
Real Estate-Michigan, Inc.

AVAILABLE

15340 23 Mile Road / Macomb Township, MI



RETAIL OPPORTUNITY

23 MILE & HAYES DEVELOPMENT



Address

15340 23 Mile Road
Macomb Township, MI 48044

Availability

Drive-thru Opportunities: 2,000-4,000 SF

Big Box Suites: +/- 100,000 SF

Retail Pads: up to 15,000 SF

Total Land: Approximately 19.8 AC

Features

Highly sought after development opportunity in Macomb County. The subject property is located in the southeast quadrant of 23 Mile and Hayes Roads and features pad site and big box development opportunities. The site is ideal for retail or medical users of all sizes. Future development is assisted by the existing infrastructure in place. The prominent location of this site is in close proximity to many daily need users including several grocery stores (Kroger, Meijer, Randazzo Fresh Market) as well as an Emagine Theater and several restaurant concepts including First Watch, Black Label Tavern, 900 Degrees Pizzeria, and more.

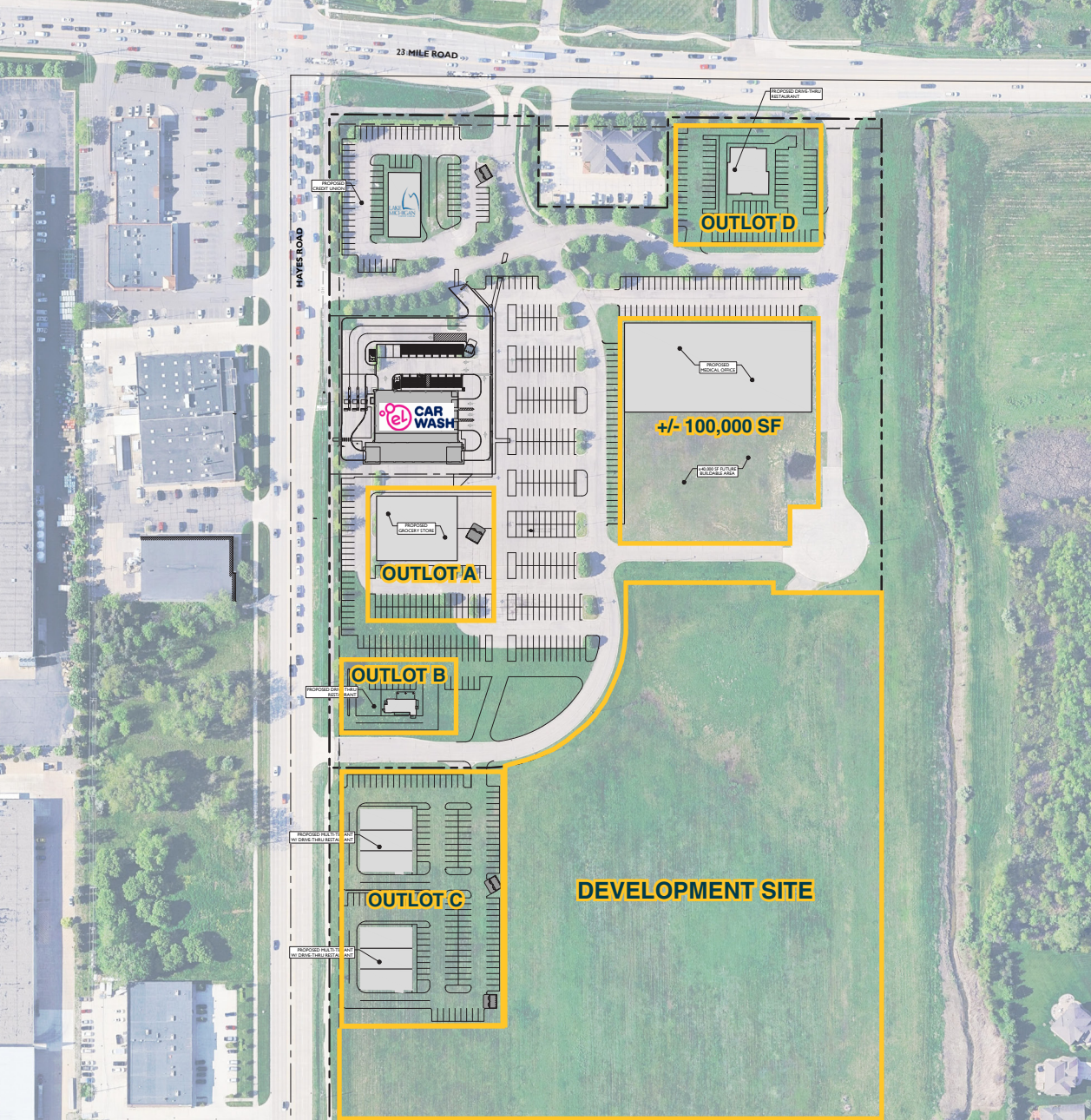
Area Tenants



Demographics (2025)

	1 MILE	3 MILES	5 MILES
POPULATION	6,828	81,990	201,488
HOUSEHOLDS	2,516	30,045	79,307
AVG HOUSEHOLD INCOME	\$130,532	\$129,827	\$118,498
DAYTIME POPULATION	10,306	71,888	174,295

23 MILE & HAYES DEVELOPMENT



23 MILE & HAYES DEVELOPMENT



Google; Accessed 01/27/2026

AERIAL

23 MILE & HAYES DEVELOPMENT



Eric
Birnholtz

Mid-America Real Estate -
Michigan, Inc.
T: 248.855.6800
EBirnholtz@MidAmericaGrp.com

Eric
Unatin

Mid-America Real Estate -
Michigan, Inc.
T: 248.855.6800
EUnatin@MidAmericaGrp.com

Gabe
Schuchman

Mid-America Real Estate -
Michigan, Inc.
T: 248.855.6800
GSchuchman@MidAmericaGrp.com



38500 Woodward Ave, Suite 100
Bloomfield Hills, Michigan 48304
248.855.6800
MidAmericaGrp.com

CONTACT