

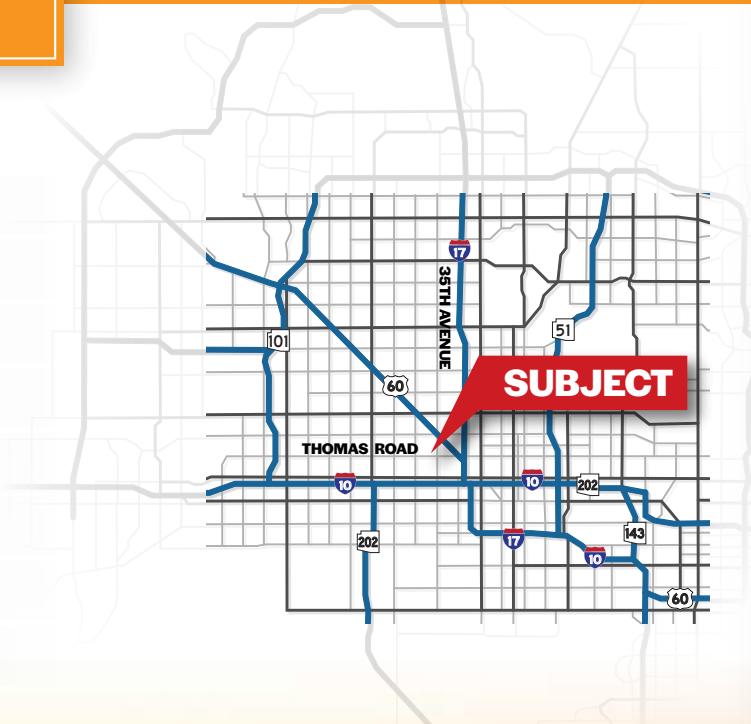
FOR LEASE



3108 WEST THOMAS ROAD
PHOENIX, ARIZONA 85017

PROPERTY OVERVIEW

- 4,500 Square Feet, Suite 1202
- \$1.22 Per Square Foot, Modified Gross
- 3 Phase Power
- Evaporative Cooled Warehouse
- 10' x 12' Grade Level Roll-Up Door
- 16' Clear Height
- A-2 Zoning
- Close to Major Freeways and Grand Avenue



Adam Shteir
Partner
602.769.0521
adam@citywidecre.com

Aimee Sanderson, CCIM
Sales & Leasing
480.678.0809
aimee@citywidecre.com

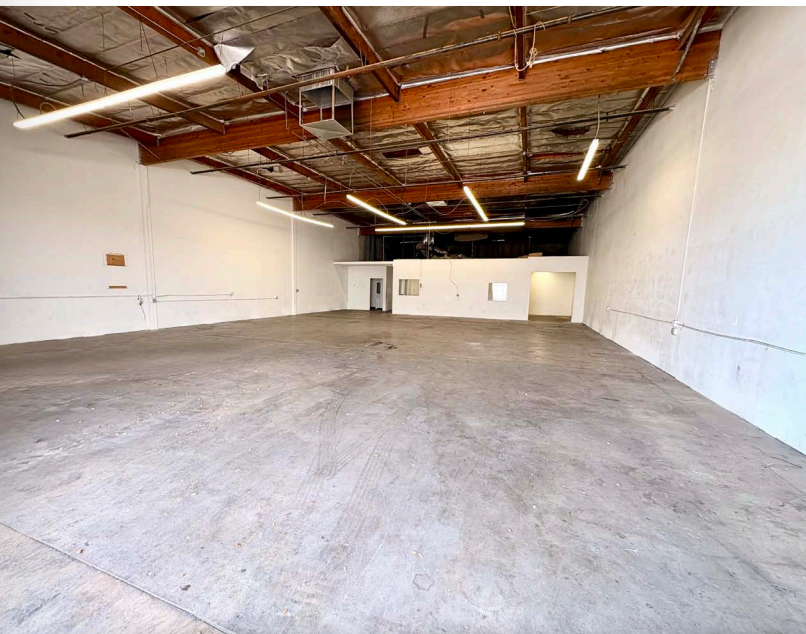
Todd Hamilton, SIOR, CCIM
Managing Partner/Designated Broker
602.909.8759
todd@citywidecre.com

2122 East Highland Avenue, Suite 225 • Phoenix, Arizona 85016 • 602.313.1000 • citywidecre.com

All information furnished is from sources deemed reliable. No representation is made as to the accuracy thereof and it is submitted subject to errors, omissions, changes, or withdrawal without notice and to any special listings conditions, including the rate and manner of payment of commissions for particular offerings imposed by principals or agreed to by the company, the terms of which are available to interested principals or brokers. All dimensions are approximate. Owner and/or Broker make no representations expressed or implied as to the accuracy of floor plan/site plan dimensions.



FOR LEASE



FOR MORE INFORMATION

Adam Shteir

Partner

602.769.0521

adam@citywidecre.com

Aimee Sanderson, CCIM

Sales & Leasing

480.678.0809

aimee@citywidecre.com

Todd Hamilton, SIOR, CCIM

Managing Partner/Designated Broker

602.909.8759

todd@citywidecre.com

2122 East Highland Avenue, Suite 225 • Phoenix, Arizona 85016 • 602.313.1000 • citywidecre.com