



Oldham
RESERVE

OLDHAM RESERVE

LA GRANGE, KY



What is Oldham Reserve?



Located in La Grange, Kentucky, Oldham Reserve is a planned commercial and residential community in beautiful Oldham County. With 1,000 acres of land available, Oldham Reserve is a great place to live, work and play. The property is beautifully landscaped with walking paths throughout the 1,000 acres.

Oldham Reserve is right off Exit 22 on Interstate 71, just 12 miles away from I-265 and the northeast corridor of Louisville. Two major airports – Louisville Muhammad Ali International airport and Cincinnati/Northern Kentucky International Airport – are located just 30 and 70 miles from the property, respectively.

The property boasts brand new road and utility infrastructure and is ready for businesses to call Oldham Reserve home.



A Brief Introduction to Oldham County

Oldham County, just 20 miles northeast of downtown Louisville, offers the perfect blend of small-town charm and metropolitan convenience. Known for its top-rated schools, highly educated workforce, and exceptional quality of life, the county continues to attract families, professionals, and growing businesses alike.

With a thriving economy supported by healthcare, manufacturing, and education sectors, Oldham County is one of Kentucky's fastest-growing communities. Residents enjoy scenic parks, outdoor recreation, local festivals, and a strong sense of community — all while maintaining quick access to Louisville's business, dining, and entertainment amenities.



70,986
Population of Oldham County



23,025
Households in Oldham County



94.5%
Of Oldham County residents
25 years and older have a high
school degree



46.4%
Of Oldham County residents
25 years and older have a
bachelor's degree or higher



65.5%
Workforce participation rate
among residents 16 years and
older

All three high schools in
Oldham County are
ranked in the top 8 high
schools statewide.

Oldham County's Growth Corridor

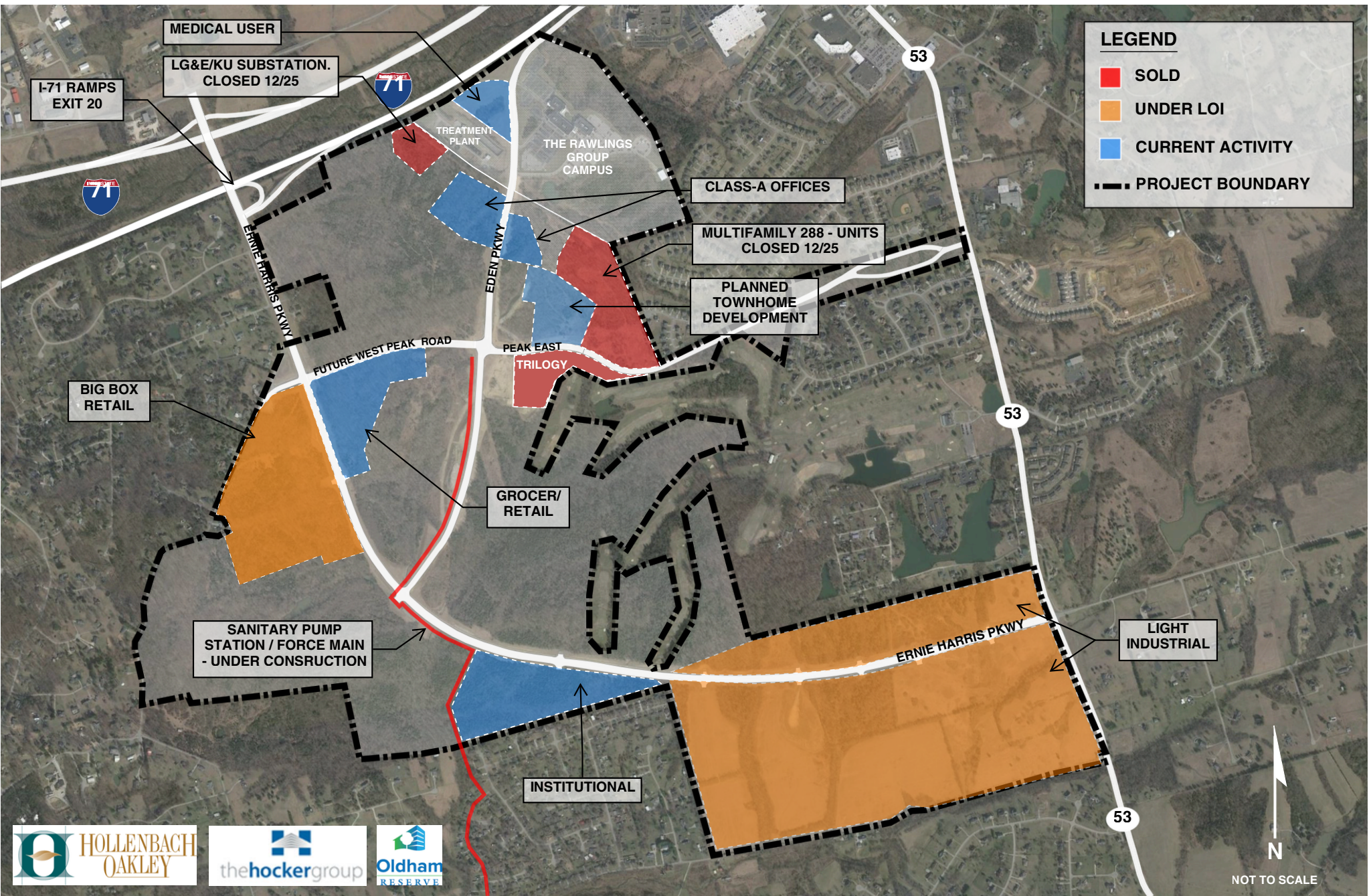


La Grange is the heart of Oldham County, home to major employers and amenities including Oldham County Schools, Baptist Health, and the Fiscal Court. Oldham Reserve offers convenient access to the area's key business, healthcare, and community hubs.

Buckner is a rapidly growing Oldham County community offering a mix of residential growth, retail conveniences, and easy interstate access. Located just minutes from Oldham Reserve, Buckner connects residents and businesses to both Oldham County and the greater Louisville market.

Crestwood is a growing suburban community known for its top-rated schools, family-friendly atmosphere, and strong quality of life. Located just 10-15 minutes from Oldham Reserve, it provides an easy commute for residents and businesses alike.

Current Activity at Oldham Reserve



LEGEND

- SOLD
- UNDER LOI
- CURRENT ACTIVITY
- PROJECT BOUNDARY



N
NOT TO SCALE

Contact Information



Newly expanded I-71 and constructed interchange providing direct access into Oldham Reserve.



Jeb Hollenbach
jhollenbachjr@hcrky.com
502.821.4080



Clayton Pitcock
cpitcock@hcrky.com
502417.8960

