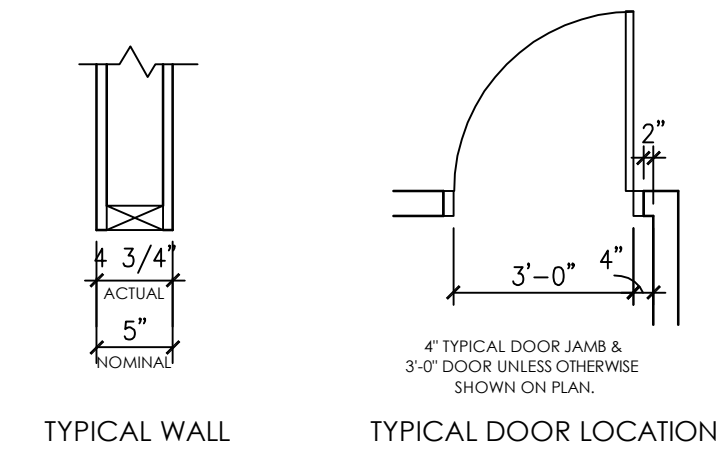


CONSTRUCTION NOTES

1. THIS SPECIFICATION SHEET IS INTENDED AS A GUIDE FOR TRADESMEN. THE FLOOR PLANS ENCLOSED HEREIN ARE SUGGESTIONS FOR THE PLACEMENT OF DENTAL EQUIPMENT. THEY ARE NOT INTENDED FOR CONSTRUCTION.
2. VERIFY ALL DIMENSIONS WITH HENRY SCHEIN DENTAL REP. ON JOBSITE. ON SITE MODIFICATIONS MAY NEED TO BE DONE BY CONTRACTOR, BUT SHOULD BE VERIFIED BY ALL PARTIES INVOLVED.
3. USE 5/8" GYPSUM WALLBOARD THROUGHOUT THE OFFICE TO PROVIDE EXTRA PROTECTION AGAINST X-RAY SCATTER RADIATION.



TYPICAL WALL TYPICAL DOOR LOCATION

WALL LEGEND

- EXISTING WALL TO REMAIN
- NEW WALLS TO BE CONSTRUCTED
- NEW WALLS WITH REQUIRED 1/16" LEAD LINING FOR RADIATION PROTECTION.
- NEW SOUND-INSULATED WALLS TO BE CONSTRUCTED
- NEW PARTIAL-HEIGHT WALLS COORDINATE WITH OWNER.
- NEW REINFORCEMENT PLACED FOR WALL-MOUNTED EQUIPMENT. SEE "REINFORCEMENT SPECIFICATION SCHEDULE" FOR MORE INFORMATION.

SEE SHEET CD.1 FOR ILLUSTRATIONS & DETAILS

REINFORCEMENT SPECIFICATIONS

QUANTITY	SPEC. NUMBER	DESCRIPTION	MECH. DETAIL	CONS. DETAIL
1	9C	PANORAMIC AND/OR CEPHALOMETRIC XRAY/ CONE BEAM UNIT - CONTRACTOR TO PROVIDE REQ'D UTILITES. REQUIRES A 3 WIRE GROUNDED CIRCUIT. X-RAY UNIT SUPPLIED AND INSTALLED BY HENRY SCHEIN DENTAL.	9C	9C
5	35	BLOCKING - UPPER & LOWER SUPPORT - CONTRACTOR TO SUPPLY AND INSTALL BACKING FOR WALL MOUNTED DENTAL UNITS & WALL HUNG CABINETS. SEE HENRY SCHEIN DENTAL EQUIPMENT SPECIALIST FOR EXACT LOCATION.	35	35
15	35A	BLOCKING - LOWER SUPPORT - CONTRACTOR TO SUPPLY AND INSTALL BACKING FOR WALL MOUNTED DENTAL UNITS & WALL HUNG CABINETS. SEE HENRY SCHEIN DENTAL EQUIPMENT SPECIALIST FOR EXACT LOCATION.	35A	35A

DESCRIPTION

HENRY SCHEIN[®]
DENTAL
 10920 WEST LINCOLN AVENUE
 WEST ALLIS, WI 53227
 (800) 336-8977

PROJECT:
WVUSOD
ORTHO PRACTICE
 LOCATION:
 BUILDING 453, FIRST FLOOR

HENRY SCHEIN REP:
 JERRY INGAGLIATO
 CENTER:
 PITTSBURGH, PA
 PHONE #:
 (412) 287-0831

-IMPORTANT NOTE-
 THIS DOCUMENT HAS BEEN PREPARED AS AN INSTRUMENT OF PROFESSIONAL SERVICE, AND IS NOT AN ARCHITECTURAL PLAN. THE IDEAS/ DESIGNS INCLUDED HEREIN ARE THE SOLE PROPERTY OF HENRY SCHEIN DENTAL, AND ARE PROTECTED UNDER COPYRIGHT. THEY MAY NOT BE USED OR REPRODUCED WITHOUT EXPRESSED WRITTEN CONSENT OF HENRY SCHEIN AND FULL PAYMENT OF ANY ASSOCIATED DESIGN FEES.
ALL DIMENSIONS ARE SUBJECT TO JOB-SITE VERIFICATION.

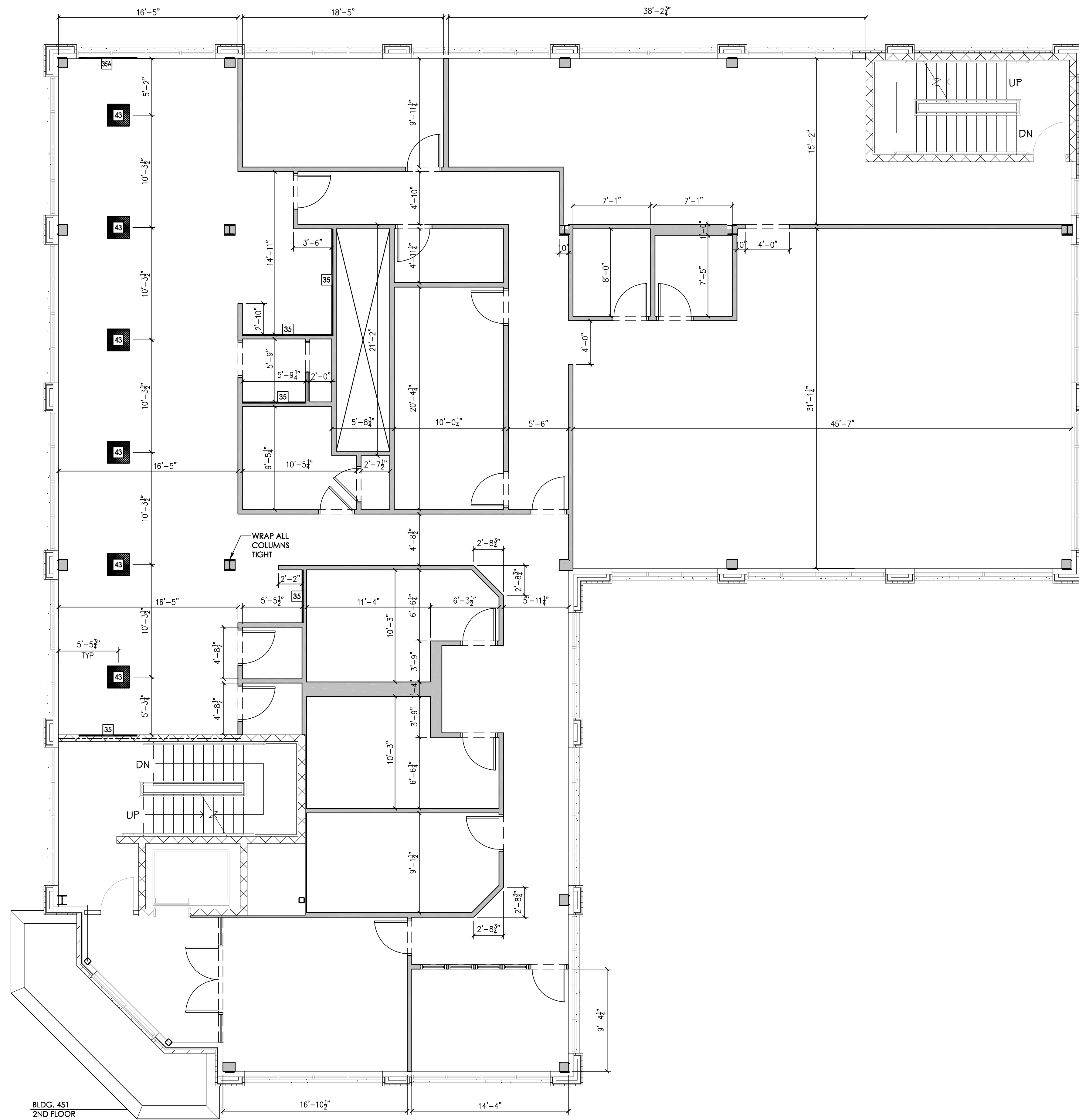
DRAWING NAME:
 WVUSOD-F
 PROJECT START DATE:
 01/05/2013
 FINALS START DATE:
 02/14/2013
 DRAWN BY: TAS
 FINALS BY: TAS
 CHECKED BY: TJK

REVISIONS:	DATE	BY	DESCRIPTION
1			
2			
3			
4			
5			
6			
7			
8			
9			
10			
11			
12			
13			
14			
15			
16			
17			
18			
19			
20			

SCALE: 3/16"=1'-0"
 SHT. SIZE: D
REINFORCEMENT PLAN

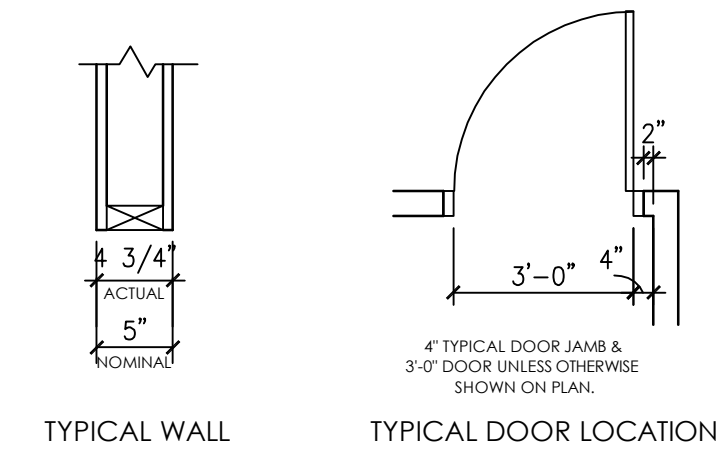
A1.1

ORTHO OFFICE & CONNECTOR
DIMENSIONS & REINFORCEMENT SPECIFICATIONS
 3/16" = 1'-0"



CONSTRUCTION NOTES

1. THIS SPECIFICATION SHEET IS INTENDED AS A GUIDE FOR TRADESMEN. THE FLOOR PLANS ENCLOSED HEREIN ARE SUGGESTIONS FOR THE PLACEMENT OF DENTAL EQUIPMENT. THEY ARE NOT INTENDED FOR CONSTRUCTION.
2. VERIFY ALL DIMENSIONS WITH HENRY SCHEIN DENTAL REP. ON JOBSITE. ON SITE MODIFICATIONS MAY NEED TO BE DONE BY CONTRACTOR, BUT SHOULD BE VERIFIED BY ALL PARTIES INVOLVED.
3. USE 5/8" GYPSUM WALLBOARD THROUGHOUT THE OFFICE TO PROVIDE EXTRA PROTECTION AGAINST X-RAY SCATTER RADIATION.



TYPICAL WALL TYPICAL DOOR LOCATION

WALL LEGEND

- EXISTING WALL TO REMAIN
- NEW WALLS TO BE CONSTRUCTED
- NEW WALLS WITH REQUIRED 1/16" LEAD LINING FOR RADIATION PROTECTION.
- NEW SOUND-INSULATED WALLS TO BE CONSTRUCTED
- NEW PARTIAL-HEIGHT WALLS COORDINATE WITH OWNER.
- DOORWAY HEADER ABOVE, HEIGHT TO BE DETERMINED BY OWNER.
- SOFFIT ABOVE, HEIGHT TO BE DETERMINED BY OWNER.
- NEW REINFORCEMENT PLACED FOR WALL-MOUNTED EQUIPMENT. SEE "REINFORCEMENT SPECIFICATION SCHEDULE" FOR MORE INFORMATION.
- NEW REINFORCEMENT PLACED FOR CEILING-MOUNTED EQUIPMENT. SEE "REINFORCEMENT SPECIFICATION SCHEDULE" FOR MORE INFORMATION.

SEE SHEET CD.1 FOR ILLUSTRATIONS & DETAILS

REINFORCEMENT SPECIFICATIONS

QUANTITY	SPEC. NUMBER	DESCRIPTION	MECH. DETAIL	CONS. DETAIL
5	35	BLOCKING - UPPER & LOWER SUPPORT - CONTRACTOR TO SUPPLY AND INSTALL BACKING FOR WALL MOUNTED DENTAL UNITS & WALL HUNG CABINETS. SEE HENRY SCHEIN DENTAL EQUIPMENT SPECIALIST FOR EXACT LOCATION.		35
1	35A	BLOCKING - LOWER SUPPORT - CONTRACTOR TO SUPPLY AND INSTALL BACKING FOR WALL MOUNTED DENTAL UNITS & WALL HUNG CABINETS. SEE HENRY SCHEIN DENTAL EQUIPMENT SPECIALIST FOR EXACT LOCATION.		35A
6	43	CEILING MOUNTED MICROSCOPE - CONTRACTOR TO PROVIDE REQ'D UTILITIES. MICROSCOPE SUPPLIED AND INSTALLED BY HENRY SCHEIN DENTAL. EXACT LOCATION PER HENRY SCHEIN DENTAL EQUIPMENT SPECIALIST.		43

HENRY SCHEIN[®]
DENTAL
10920 WEST LINCOLN AVENUE
WEST ALLIS, WI 53227
(800) 336-8977

PROJECT:
WVUSOD
ENDO & STAFF

LOCATION:
BUILDING 453, FIRST FLOOR

HENRY SCHEIN REP:
JERRY INGAGLIATO
CENTER:
PITTSBURGH, PA
PHONE #:
(412) 287-0831

IMPORTANT NOTE:
THIS DOCUMENT HAS BEEN PREPARED AS AN INSTRUMENT OF PROFESSIONAL SERVICE AND IS NOT AN ARCHITECTURAL PLAN. IDEAS/DESIGNS INCLUDED HEREIN ARE THE SOLE PROPERTY OF HENRY SCHEIN DENTAL AND ARE PRODUCED UNDER COPYRIGHT. THEY MAY NOT BE USED OR REPRODUCED WITHOUT EXPRESSED WRITTEN CONSENT OF HENRY SCHEIN AND FULL PAYMENT OF ANY ASSOCIATED DESIGN FEES.
ALL DIMENSIONS ARE SUBJECT TO JOB-SITE VERIFICATION.

DRAWING NAME:
WVUSOD-F
PROJECT START DATE:
01/05/2013
FINALS START DATE:
02/14/2013
DRAWN BY: TAS
FINALS BY: TAS
CHECKED BY: TJK

REVISIONS:

NO.	DATE	DESCRIPTION

INT. SQ. FT. =

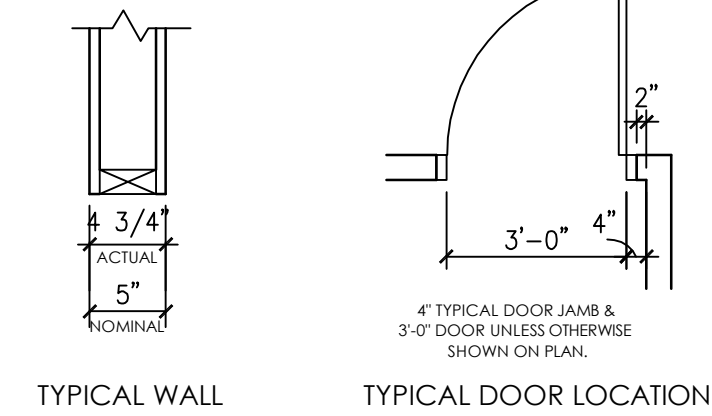
SCALE: 3/16"=1'-0"
SHT. SIZE: D
REINFORCEMENT PLAN

A1.2

ENDO OFFICE & STAFF FLOOR
DIMENSION & REINFORCEMENT SPECIFICATIONS
3/16" = 1'-0"

CONSTRUCTION NOTES

- THIS SPECIFICATION SHEET IS INTENDED AS A GUIDE FOR TRADESMEN. THE FLOOR PLANS ENCLOSED HEREIN ARE SUGGESTIONS FOR THE PLACEMENT OF DENTAL EQUIPMENT. THEY ARE NOT INTENDED FOR CONSTRUCTION.
- VERIFY ALL DIMENSIONS WITH HENRY SCHEIN DENTAL REP. ON JOBSITE. ON SITE MODIFICATIONS MAY NEED TO BE DONE BY CONTRACTOR, BUT SHOULD BE VERIFIED BY ALL PARTIES INVOLVED.
- USE 5/8" GYPSUM WALLBOARD THROUGHOUT THE OFFICE TO PROVIDE EXTRA PROTECTION AGAINST X-RAY SCATTER RADIATION.



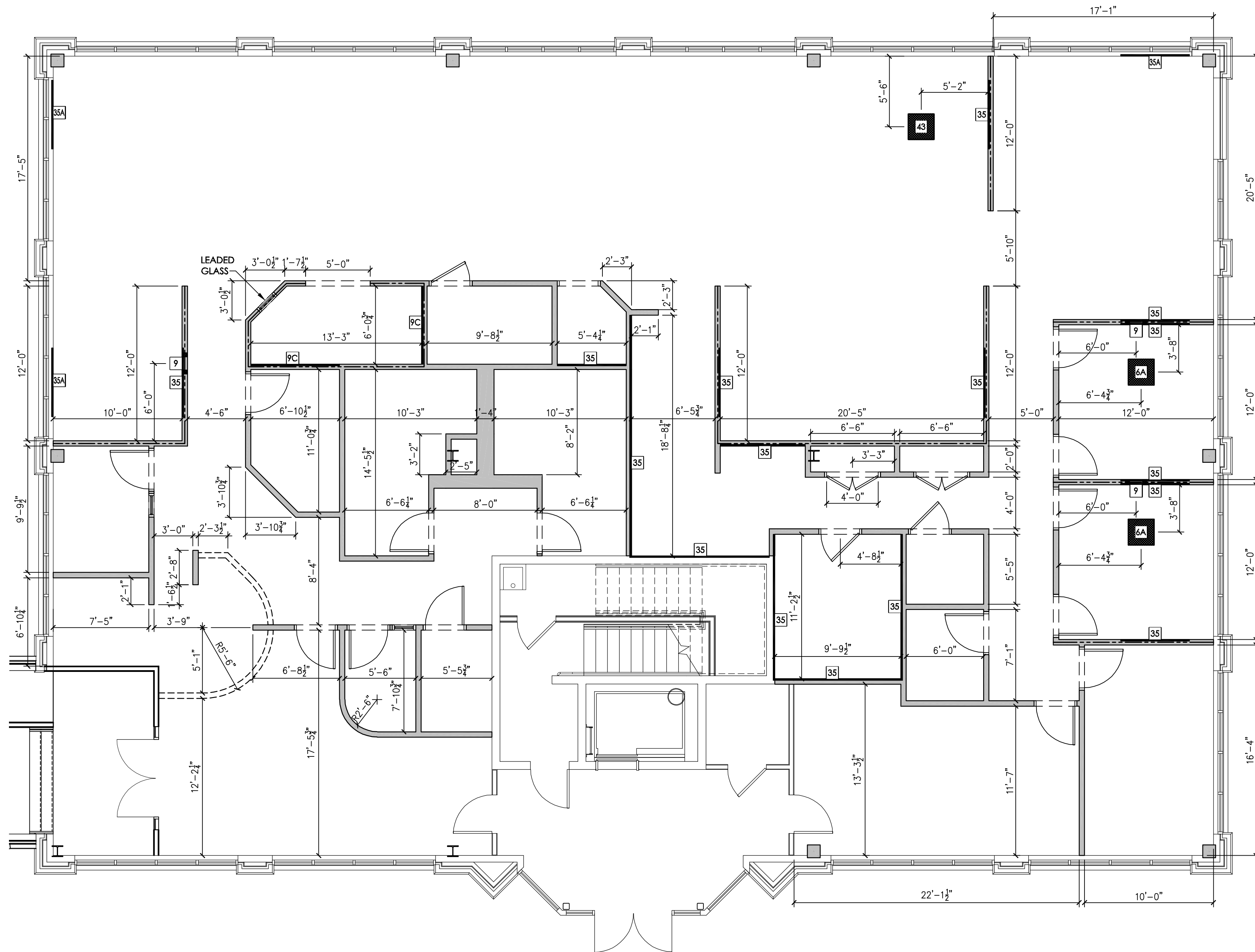
WALL LEGEND

- EXISTING WALL TO REMAIN
- NEW WALLS TO BE CONSTRUCTED
- NEW WALLS WITH REQUIRED 1/16" LEAD LINING FOR RADIATION PROTECTION.
- NEW SOUND-INSULATED WALLS TO BE CONSTRUCTED
- NEW PARTIAL-HEIGHT WALLS COORDINATE WITH OWNER.
- DOORWAY HEADER ABOVE. HEIGHT TO BE DETERMINED BY OWNER.
- SOFFIT ABOVE. HEIGHT TO BE DETERMINED BY OWNER.
- NEW REINFORCEMENT PLACED FOR WALL-MOUNTED EQUIPMENT. SEE "REINFORCEMENT SPECIFICATION SCHEDULE" FOR MORE INFORMATION.
- NEW REINFORCEMENT PLACED FOR CEILING-MOUNTED EQUIPMENT. SEE "REINFORCEMENT SPECIFICATION SCHEDULE" FOR MORE INFORMATION.

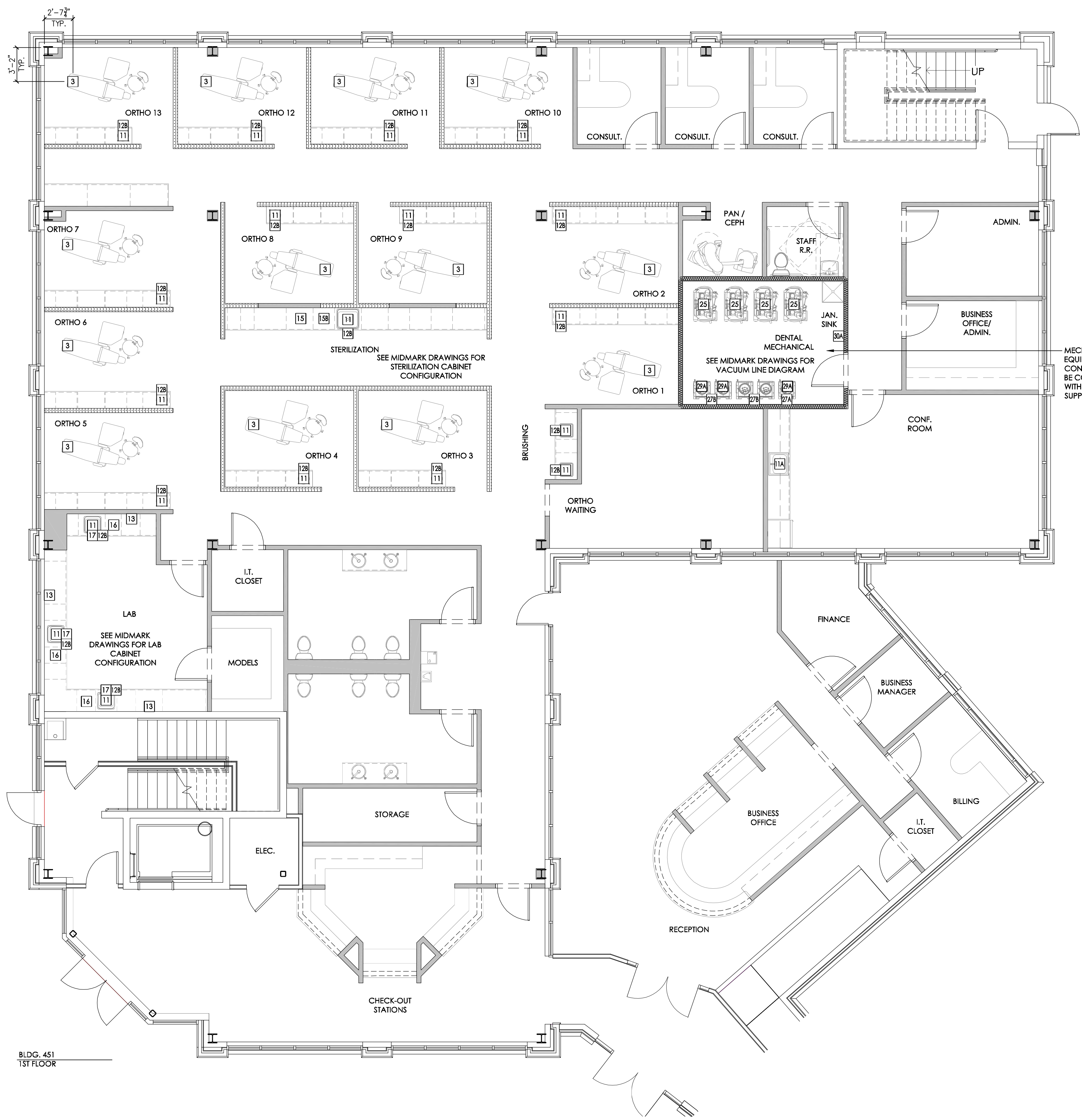
SEE SHEET CD.1 FOR ILLUSTRATIONS & DETAILS

REINFORCEMENT SPECIFICATIONS

QUANTITY	SPEC. NUMBER	DESCRIPTION	MECH. DETAIL	CONS. DETAIL
2	6A	DENTAL CEILING LIGHT - CONTRACTOR TO PROVIDE REQ'D UTILITIES AND MOUNTING SUPPORT. LIGHT SUPPLIED AND INSTALLED BY HENRY SCHEIN DENTAL.	6A	6A
3	9	WALL MOUNTED INTRAORAL X-RAY HEAD, ARM, AND WALL BRACKET - CONTRACTOR TO PROVIDE REQ'D UTILITIES AND MOUNTING SUPPORT. X-RAY UNIT SUPPLIED AND INSTALLED BY HENRY SCHEIN DENTAL. REQUIRES A 3 WIRE GROUNDED CIRCUIT.	9	9
2	9C	PANORAMIC AND/OR CEPHALOMETRIC XRAY/ CONE BEAM UNIT - CONTRACTOR TO PROVIDE REQ'D UTILITIES. REQUIRES A 3 WIRE GROUNDED CIRCUIT. X-RAY UNIT SUPPLIED AND INSTALLED BY HENRY SCHEIN DENTAL.	9C	9C
16	35	BLOCKING - UPPER & LOWER SUPPORT - CONTRACTOR TO SUPPLY AND INSTALL BACKING FOR WALL MOUNTED DENTAL UNITS & WALL HUNG CABINETS. SEE HENRY SCHEIN DENTAL EQUIPMENT SPECIALIST FOR EXACT LOCATION.	35	35
3	35A	BLOCKING - LOWER SUPPORT - CONTRACTOR TO SUPPLY AND INSTALL BACKING FOR WALL MOUNTED DENTAL UNITS & WALL HUNG CABINETS. SEE HENRY SCHEIN DENTAL EQUIPMENT SPECIALIST FOR EXACT LOCATION.	35A	35A
1	43	CEILING MOUNTED MICROSCOPE - CONTRACTOR TO PROVIDE REQ'D UTILITIES. MICROSCOPE SUPPLIED AND INSTALLED BY HENRY SCHEIN DENTAL. EXACT LOCATION PER HENRY SCHEIN DENTAL EQUIPMENT SPECIALIST.	43	43



GENERAL PRACTICE
DIMENSIONS & REINFORCEMENT SPECIFICATIONS
 3/16" = 1'-0"



PLUMBING NOTES

1. THIS SPECIFICATION SHEET IS INTENDED AS A GUIDE FOR TRADESMEN. THE FLOOR PLANS ENCLOSED HEREIN ARE SUGGESTIONS FOR THE PLACEMENT OF DENTAL EQUIPMENT. THEY ARE NOT INTENDED FOR CONSTRUCTION.
2. EXACT EQUIPMENT LOCATIONS MUST BE JOB SITE VERIFIED BY THE HENRY SCHEIN DENTAL EQUIPMENT SPECIALIST.
3. FOLLOW MANUFACTURER'S DRAWINGS FOR EXACT REQUIREMENTS FOR ANY EQUIPMENT SUPPLIED BY HENRY SCHEIN DENTAL. CONSULT WITH HENRY SCHEIN DENTAL REP FOR ADDITIONAL INFORMATION.
4. WATER PRESSURE MUST NOT EXCEED 50 PSI AT ALL DENTAL UNITS.
5. BACK-FLOW PREVENTION IS REQUIRED ON ALL LINES AS PER LOCAL CODE.

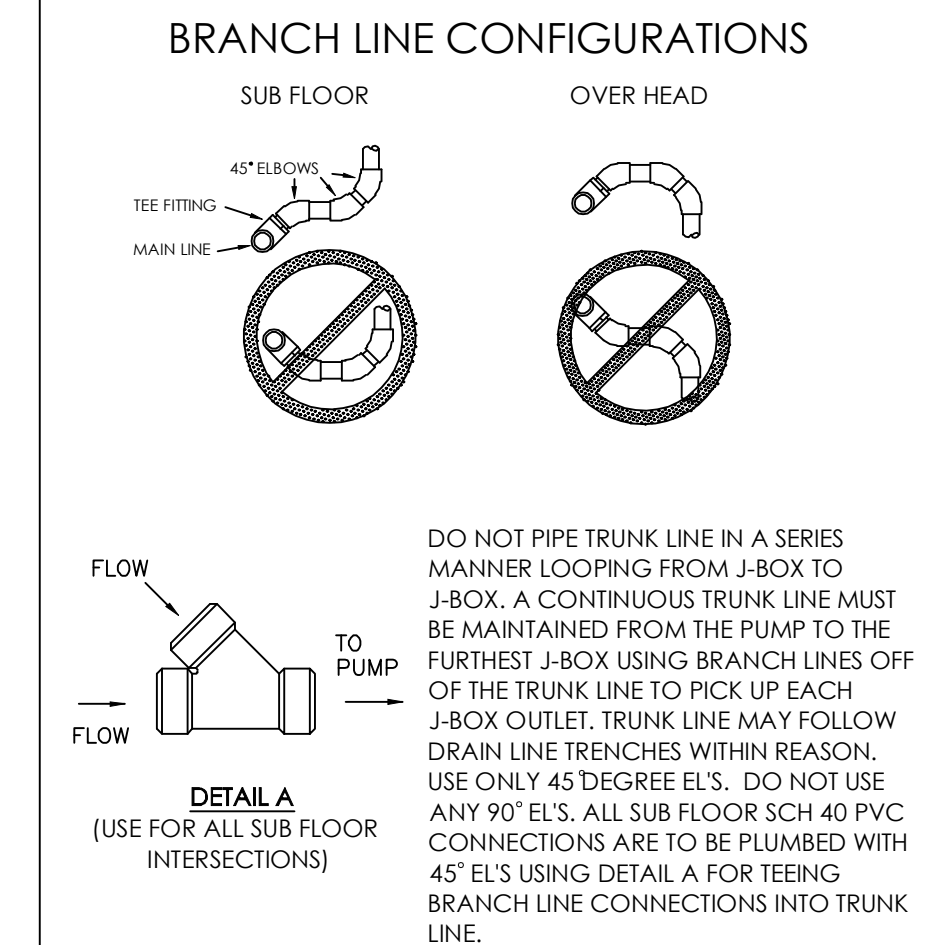
VACUUM NOTES

THE VACUUM PIPING LAYOUT HAS A LARGE EFFECT ON THE EFFICIENCY AND RELIABILITY OF THE DENTAL VACUUM SYSTEM. REFER TO MANUFACTURER'S PRE-INSTALLATION GUIDE PROVIDED BY HENRY SCHEIN EQUIPMENT SALES SPECIALIST (ESS) FOR SPECIFIC SIZING OF SUB-UP, TRUNK, AND BRANCH LINES.

IT IS HIGHLY RECOMMENDED THAT VACUUM LINES RUN UNDERNEATH DENTAL EQUIPMENT BY MEANS OF TRENCHING/ CORING (CONCRETE SLAB) OR IN SUB FLOOR (BASEMENT/ CRAWL SPACE). ALL LINES ARE TO BE DESIGNED WITH PVC PIPING UNLESS DICTATED BY LOCAL CODES TO USE COPPER OR CAST IRON.

TO ENSURE OPTIMUM VACUUM PERFORMANCE, INSTALL MAIN LINE DIRECTLY BELOW THE DENTAL CHAIR, CABINET OR WALL JUNCTION BOX TO REDUCE OR ELIMINATE BRANCH LINE RUNS WHEREVER POSSIBLE.

1. **STUB-UP**
TERMINATE VACUUM TRUNK LINE IN MECHANICAL ROOM W/ VERTICAL STUB-UP 3" A.F.F. PLUMBING CONTRACTOR TO PROVIDE FPT ADAPTOR ON END OF STUB-UP. SIZE OF ADAPTOR TO BE DETERMINED BY TRUNK AND PUMP INTAKE PIPE SIZES. IN THE CASE OF DUAL TRUNK LINE SYSTEM, PROVIDE ENOUGH SPACE BETWEEN STUB-UPS TO INSTALL TEES ON BOTH LINES.
2. **TRUNK LINE(S)**
VACUUM TRUNK LINE(S) TO BE SUPPORTED EVERY 6'-0" TO PREVENT SAG AND SLOPED A MINIMUM OF 1/4" PER 10'-0" TOWARD THE VACUUM PUMP.
3. **BRANCH LINE(S)**
BRANCH LINES ARE TO BE "SWEEPING" 90 DEGREE TURNS TO AVOID VACUUM LOSS. A "Y" TEE FITTING SHOULD BE USED WHEN AVAILABLE TO BRANCH TWO LINES TOGETHER.



DO NOT PIPE TRUNK LINE IN A SERIES MANNER LOOPING FROM J-BOX TO J-BOX. A CONTINUOUS TRUNK LINE MUST BE MAINTAINED FROM THE PUMP TO THE FURTHEST J-BOX USING BRANCH LINES OFF OF THE TRUNK LINE TO PICK UP EACH J-BOX OUTLET. TRUNK LINE MAY FOLLOW DRAIN LINE TRENCHES WITHIN REASON. USE ONLY 45 DEGREE EL'S. DO NOT USE ANY 90° EL'S. ALL SUB FLOOR SCH 40 PVC CONNECTIONS ARE TO BE PLUMBED WITH 45° EL'S USING DETAIL A FOR TEEING BRANCH LINE CONNECTIONS INTO TRUNK LINE.

SPECIAL NOTE:
IF VACUUM LINES ENCR OACH ON EITHER A WALL OR COLUMN FOOTING, USE 45 DEGREE ELBOWS TO PIPE AROUND FOOTING SO PIPE REACHES PROPER LOCATION.

SEE SHEETS MD.1 & MD.2 FOR ILLUSTRATIONS & DETAILS

PLUMBING SPECIFICATIONS

QUANTITY	SPEC. NUMBER	DESCRIPTION	UTILITIES						MECH. DETAIL	CONS. DETAIL	
			COLD WATER	HOT WATER	DRAIN	AIR	NATURAL GAS	VACUUM			
13	3	UTILITY CENTER - CONTRACTOR TO PROVIDE REQ'D UTILITES. BACK FLOW PREVENTION REQUIRED AS PER LOCAL CODE.	•	•	•	•	•	•	3		
19	11	MODULAR SINKS & FAUCETS - CONTRACTOR TO PROVIDE REQ'D UTILITES. SINK AND FAUCET SUPPLIED BY HENRY SCHEIN DENTAL, INSTALLED BY CONTRACTOR. FINAL CONNECTIONS BY CONTRACTOR.	•	•	•	•	•	•			
1	11A	STANDARD SINK & FAUCET - CONTRACTOR TO PROVIDE AND INSTALL REQ'D UTILITES, SINK AND FAUCET. MANUFACTURER AND STYLE DETERMINED BY OWNER. FINAL CONNECTIONS BY CONTRACTOR.	•	•	•	•	•	•			
19	12B	TAP MASTER FAUCET CONTROL - FROM (12B) TO (11) OR (11A). SUPPLIED BY HENRY SCHEIN DENTAL, INSTALLED BY CONTRACTOR.								12B	
3	13	AIR LINE AND VALVE - CONTRACTOR TO PROVIDE REQ'D UTILITES. TERMINATE WITH A 3/8" COMPRESSION STOP.				•				13	
1	15	ULTRASONIC CLEANER - CONTRACTOR TO PROVIDE REQ'D UTILITES. CLEANER SUPPLIED AND INSTALLED BY HENRY SCHEIN DENTAL.				•				15	
1	15B	HANDPIECE MAINTENANCE SYSTEM - CONTRACTOR TO PROVIDE REQ'D UTILITES. 1/2" AIR LINE WITH VALVE STOP (58-145 PSI) ABOVE COUNTERTOP. SYSTEM SUPPLIED AND INSTALLED BY HENRY SCHEIN DENTAL.				•				15B	
3	16	MODEL TRIMMER - CONTRACTOR TO PROVIDE REQ'D UTILITES. MODEL TRIMMER SUPPLIED AND INSTALLED BY HENRY SCHEIN DENTAL. BACK FLOW PREVENTION REQUIRED PER CODE.				•				16	
3	17	PLASTER TRAP - SUPPLIED BY HENRY SCHEIN DENTAL, INSTALLED BY CONTRACTOR ON SINK DRAIN LINE.				•				17	
4	25	AIR COMPRESSOR W/DRYER - CONTRACTOR TO PROVIDE REQ'D UTILITES AND FRESH-AIR INTAKE VENT. 1/2" I.D. COPPER TYPE K OR L SUPPLY LINES TO LOCATIONS THAT REQUIRE AIR. BUCK BOOST TRANSFORMER SUPPLIED AND INSTALLED BY CONTRACTOR (IF REQ'D). FINAL CONNECTIONS BY CONTRACTOR.								25	
1	27A	VACUUM PUMP (DRY) - CONTRACTOR TO PROVIDE REQ'D UTILITES. SCH 40 PVC MAIN TRUNK LINES (WHERE PERMITTED BY CODE). TRUNK, REDUCTION AND BRANCH LINE SIZES PER MFR RECOMMENDATIONS. EXHAUST PUMP TO OUTSIDE. BACK FLOW PREVENTION REQ'D PER LOCAL CODE. COLLECTION CANISTER (CAS) SUPPLIED BY HENRY SCHEIN DENTAL, INSTALLED BY CONTRACTOR. BUCK BOOST TRANSFORMER SUPPLIED AND INSTALLED BY CONTRACTOR (IF REQ'D). FINAL CONNECTIONS BY CONTRACTOR. PROVIDE WATER LINE WITH HOSE BIB NEAR UNIT.	•								27A
2	27B	VACUUM PUMP (DRY) - CONTRACTOR TO PROVIDE REQ'D UTILITES. SCH 40 PVC MAIN TRUNK LINES (WHERE PERMITTED BY CODE). TRUNK, REDUCTION AND BRANCH LINE SIZES PER MFR RECOMMENDATIONS. EXHAUST PUMP TO OUTSIDE. BACK FLOW PREVENTION REQ'D PER LOCAL CODE. COLLECTION CANISTER (CAS) SUPPLIED BY HENRY SCHEIN DENTAL, INSTALLED BY CONTRACTOR. BUCK BOOST TRANSFORMER SUPPLIED AND INSTALLED BY CONTRACTOR (IF REQ'D). FINAL CONNECTIONS BY CONTRACTOR. PROVIDE WATER LINE WITH HOSE BIB NEAR UNIT.	•								27B
3	29A	AMALGAM SEPARATOR - SUPPLIED BY HENRY SCHEIN DENTAL, INSTALLED BY PLUMBER. VERIFY LOCATION WITH HENRY SCHEIN DENTAL EQUIPMENT SPECIALIST.									29A
1	30A	WATER SOLENOID W/FILTER - CONTRACTOR TO PROVIDE REQ'D UTILITES. SOLENOID SUPPLIED BY HENRY SCHEIN DENTAL, INSTALLED BY CONTRACTOR ON COLD WATER SUPPLY LINE (FOR DENTAL EQUIPMENT ONLY).	•								30A

ORTHO OFFICE & CONNECTOR PROPOSED DENTAL PLUMBING SPECIFICATIONS

3/16" = 1'-0"

HENRY SCHEIN[®]
DENTAL
10920 WEST LINCOLN AVENUE
WEST ALLIS, WI 53227
(800) 336-8977

PROJECT:
**WVUSOD
ORTHO & CONNECTOR**
LOCATION:
BUILDING 453, FIRST FLOOR

HENRY SCHEIN REP:
JERRY INGAGLIATO
CENTER:
PITTSBURGH, PA
PHONE #:
(412) 287-0831

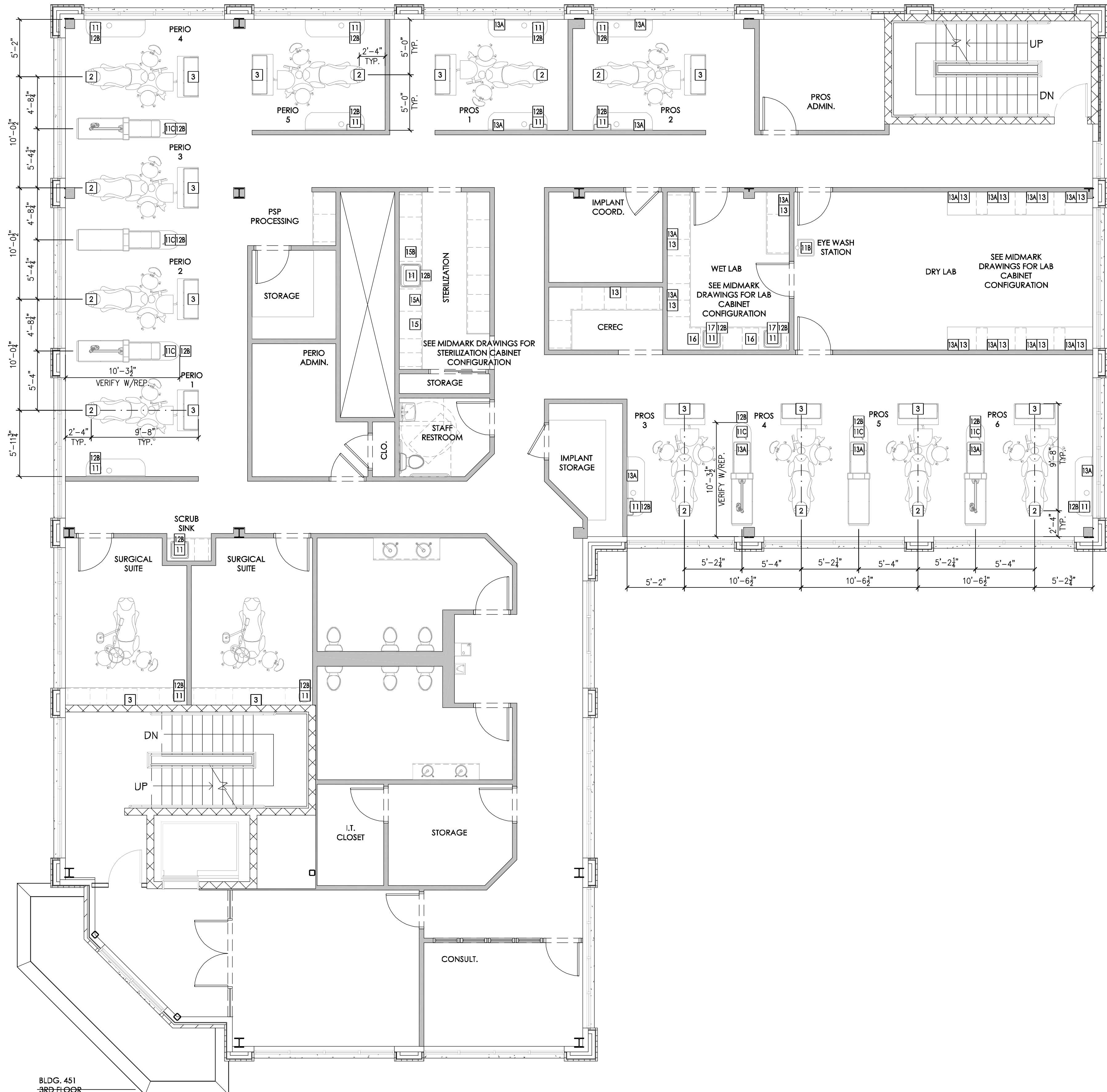
-IMPORTANT NOTE-
THIS DOCUMENT HAS BEEN PREPARED AS AN INSTRUMENT OF THE PROFESSIONAL SERVICE, AND IS NOT AN ARCHITECTURAL PLAN. IDEAS/ DESIGNS INCLUDED HEREIN ARE THE SOLE PROPERTY OF HENRY SCHEIN DENTAL, AND ARE PROTECTED UNDER COPYRIGHT. THEY MAY NOT BE USED OR REPRODUCED WITHOUT EXPRESSED WRITTEN CONSENT OF HENRY SCHEIN AND FULL PAYMENT OF ANY ASSOCIATED DESIGN FEES.
ALL DIMENSIONS ARE SUBJECT TO JOB-SITE VERIFICATION.

DRAWING NAME:
WVUSOD-F
PROJECT START DATE:
01/05/2013
FINALS START DATE:
02/14/2013
DRAWN BY: TAS
FINALS BY: TAS
CHECKED BY: TJK

REVISIONS:

NO.	DATE	DESCRIPTION
1	01/05/2013	ISSUED FOR PERMIT
2	02/14/2013	ISSUED FOR CONSTRUCTION

SCALE: 3/16"=1'-0"
SHT. SIZE: D
PLUMBING PLAN
PO.1



PLUMBING NOTES

1. THIS SPECIFICATION SHEET IS INTENDED AS A GUIDE FOR TRADESMEN. THE FLOOR PLANS ENCLOSED HEREIN ARE SUGGESTIONS FOR THE PLACEMENT OF PRE-INSTALLATION EQUIPMENT. THEY ARE NOT INTENDED FOR CONSTRUCTION.
2. EXACT EQUIPMENT LOCATIONS MUST BE JOB SITE VERIFIED BY THE HENRY SCHEIN DENTAL EQUIPMENT SPECIALIST.
3. FOLLOW MANUFACTURER'S DRAWINGS FOR EXACT REQUIREMENTS FOR ANY EQUIPMENT SUPPLIED BY HENRY SCHEIN DENTAL. CONSULT WITH HENRY SCHEIN DENTAL REP FOR ADDITIONAL INFORMATION.
4. WATER PRESSURE MUST NOT EXCEED 50 PSI AT ALL DENTAL UNITS.
5. BACK-FLOW PREVENTION IS REQUIRED ON ALL LINES AS PER LOCAL CODE.

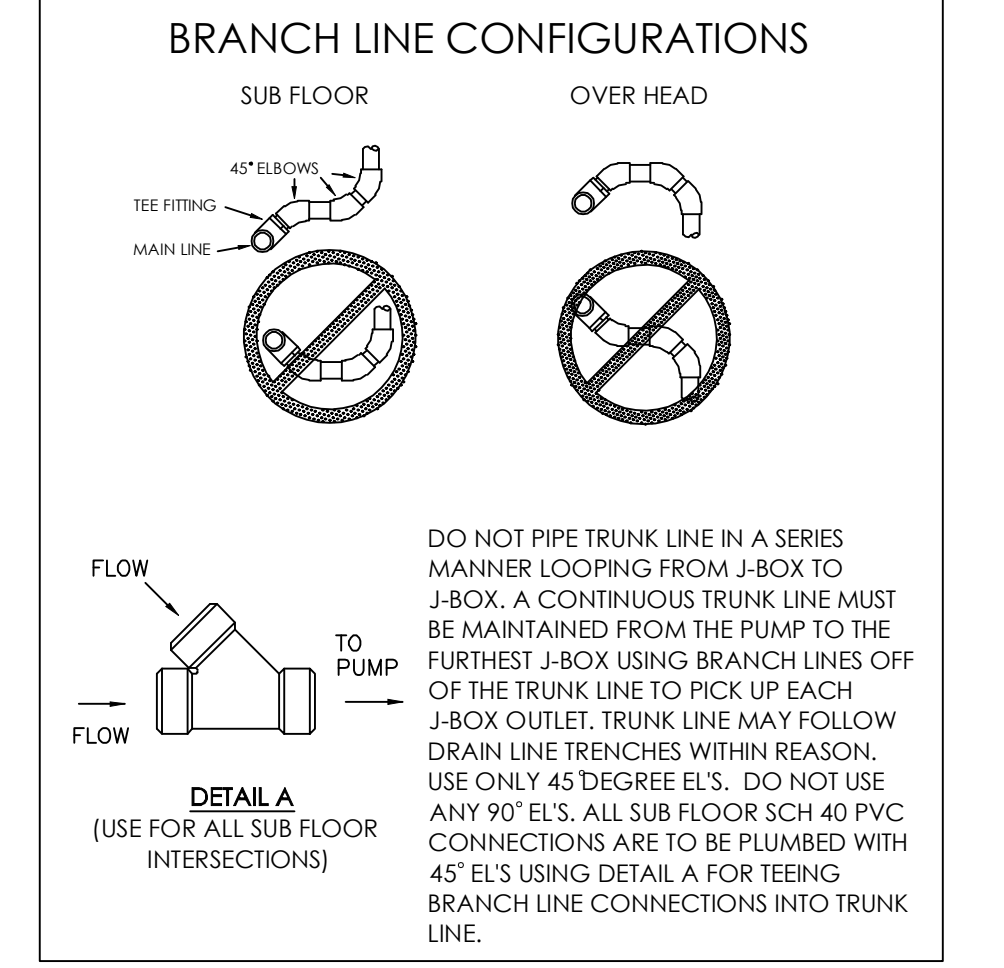
VACUUM NOTES

THE VACUUM PIPING LAYOUT HAS A LARGE EFFECT ON THE EFFICIENCY AND RELIABILITY OF THE DENTAL VACUUM SYSTEM. REFER TO MANUFACTURER'S PRE-INSTALLATION GUIDE PROVIDED BY HENRY SCHEIN EQUIPMENT SALES SPECIALIST (ESS) FOR SPECIFIC SIZING OF SUB-UP, TRUNK, AND BRANCH LINES.

IT IS HIGHLY RECOMMENDED THAT VACUUM LINES RUN UNDERNEATH DENTAL EQUIPMENT BY MEANS OF TRENCHING/ CORING (CONCRETE SLAB) OR IN SUB FLOOR (BASEMENT/ CRAWL SPACE). ALL LINES ARE TO BE DESIGNED WITH PVC PIPING UNLESS DICTATED BY LOCAL CODES TO USE COPPER OR CAST IRON.

TO ENSURE OPTIMUM VACUUM PERFORMANCE, INSTALL MAIN LINE DIRECTLY BELOW THE DENTAL CHAIR, CABINET OR WALL JUNCTION BOX TO REDUCE OR ELIMINATE BRANCH LINE RUNS WHEREVER POSSIBLE.

1. **STUB-UP**
TERMINATE VACUUM TRUNK LINE IN MECHANICAL ROOM W/ VERTICAL STUB-UP 3" A.F.F. PLUMBING CONTRACTOR TO PROVIDE FPT ADAPTOR ON END OF STUB-UP. SIZE OF ADAPTOR TO BE DETERMINED BY TRUNK AND PUMP INTAKE PIPE SIZES. IN THE CASE OF DUAL TRUNK LINE SYSTEM, PROVIDE ENOUGH SPACE BETWEEN STUB-UPS TO INSTALL TEES ON BOTH LINES.
2. **TRUNK LINE(S)**
VACUUM TRUNK LINE(S) TO BE SUPPORTED EVERY 6'-0" TO PREVENT SAG AND SLOPED A MINIMUM OF 1/4" PER 10'-0" TOWARD THE VACUUM PUMP.
3. **BRANCH LINE(S)**
BRANCH LINES ARE TO BE "SWEEPING" 90 DEGREE TURNS TO AVOID VACUUM LOSS. A "Y" TEE FITTING SHOULD BE USED WHEN AVAILABLE TO BRANCH TWO LINES TOGETHER.



SPECIAL NOTE:
IF VACUUM LINES ENCRDACH ON EITHER A WALL OR COLUMN FOOTING, USE 45 DEGREE ELBOWS TO PIPE AROUND FOOTING SO PIPE REACHES PROPER LOCATION.

SEE SHEETS MD.1 & MD.2 FOR ILLUSTRATIONS & DETAILS

PLUMBING SPECIFICATIONS

QUANTITY	SPEC. NUMBER	DESCRIPTION	UTILITIES							MECH. DETAIL	CONS. DETAIL		
			COLD WATER	HOT WATER	DRAIN	AIR	NATURAL GAS	VACUUM	OXYGEN			VENT	
11	2	UTILITY CENTER - CONTRACTOR TO PROVIDE REQ'D UTILITIES. BACK FLOW PREVENTION REQUIRED AS PER LOCAL CODE.	•	•	•	•	•	•	•	•	•	•	•
13	3	UTILITY CENTER - CONTRACTOR TO PROVIDE REQ'D UTILITIES. BACK FLOW PREVENTION REQUIRED AS PER LOCAL CODE.	•	•	•	•	•	•	•	•	•	•	•
16	11	MODULAR SINKS & FAUCETS - CONTRACTOR TO PROVIDE REQ'D UTILITIES. SINK AND FAUCET SUPPLIED BY HENRY SCHEIN DENTAL, INSTALLED BY CONTRACTOR. FINAL CONNECTIONS BY CONTRACTOR.	•	•	•	•	•	•	•	•	•	•	•
1	11B	EYEWASH STATION - CONTRACTOR TO PROVIDE REQ'D UTILITIES. STATION SUPPLIED BY HENRY SCHEIN DENTAL, INSTALLED BY CONTRACTOR. VERIFY EXACT LOCATION WITH DOCTOR AND HENRY SCHEIN EQUIPMENT SPECIALIST.	•	•	•	•	•	•	•	•	•	•	•
6	11C	CENTER ISLAND CABINET - CONTRACTOR TO PROVIDE REQ'D UTILITIES. CABINET SUPPLIED AND INSTALLED BY HENRY SCHEIN DENTAL, SINK AND FAUCET TO BE INSTALLED BY CONTRACTOR. FINAL CONNECTIONS BY CONTRACTOR.	•	•	•	•	•	•	•	•	•	•	•
22	12B	TAP MASTER FAUCET CONTROL - FROM (12B) TO (11) OR (11A). SUPPLIED BY HENRY SCHEIN DENTAL, INSTALLED BY CONTRACTOR.	•	•	•	•	•	•	•	•	•	•	•
12	13	AIR LINE AND VALVE - CONTRACTOR TO PROVIDE REQ'D UTILITIES. TERMINATE WITH A 3/8" COMPRESSION STOP.	•	•	•	•	•	•	•	•	•	•	•
20	13A	NATURAL GAS LINE AND VALVE - CONTRACTOR TO PROVIDE REQ'D UTILITIES. TERMINATE WITH GAS VALVE CONNECTED TO 3/8" FPT FLUSH WITH WALL.	•	•	•	•	•	•	•	•	•	•	•
1	15	ULTRASONIC CLEANER - CONTRACTOR TO PROVIDE REQ'D UTILITIES. CLEANER SUPPLIED AND INSTALLED BY HENRY SCHEIN DENTAL.	•	•	•	•	•	•	•	•	•	•	•
1	15A	INSTRUMENT WASHER (HYDRIM) - CONTRACTOR TO PROVIDE REQ'D UTILITIES. WASHER SUPPLIED AND INSTALLED BY HENRY SCHEIN DENTAL.	•	•	•	•	•	•	•	•	•	•	•
1	15B	HANDPIECE MAINTENANCE SYSTEM - CONTRACTOR TO PROVIDE REQ'D UTILITIES. 1/2" AIR LINE WITH VALVE STOP (58-145 PSI) ABOVE COUNTERTOP. SYSTEM SUPPLIED AND INSTALLED BY HENRY SCHEIN DENTAL.	•	•	•	•	•	•	•	•	•	•	•
2	16	MODEL TRIMMER - CONTRACTOR TO PROVIDE REQ'D UTILITIES. MODEL TRIMMER SUPPLIED AND INSTALLED BY HENRY SCHEIN DENTAL. BACK FLOW PREVENTION REQUIRED PER CODE.	•	•	•	•	•	•	•	•	•	•	•
2	17	PLASTER TRAP - SUPPLIED BY HENRY SCHEIN DENTAL, INSTALLED BY CONTRACTOR ON SINK DRAIN LINE.	•	•	•	•	•	•	•	•	•	•	•

HENRY SCHEIN[®]
DENTAL
10920 WEST LINCOLN AVENUE
WEST ALLIS, WI 53227
(800) 336-8977

PROJECT: **WVUSOD
PROST & PERIO**
LOCATION: BUILDING 453, SECOND FLOOR

HENRY SCHEIN REP:
JERRY INGAGLIATO
CENTER:
PITTSBURGH, PA
PHONE #:
(412) 287-0831

-IMPORTANT NOTE-
THIS DOCUMENT HAS BEEN PREPARED AS AN INSTRUMENT OF THE PROFESSIONAL SERVICE, AND IS NOT AN ARCHITECTURAL PLAN. IDEAS/ DESIGNS INCLUDED HEREIN ARE THE SOLE PROPERTY OF HENRY SCHEIN DENTAL, AND ARE PROTECTED UNDER COPYRIGHT. THEY MAY NOT BE USED OR REPRODUCED WITHOUT EXPRESSED WRITTEN CONSENT OF HENRY SCHEIN AND FULL PAYMENT OF ANY ASSOCIATED DESIGN FEES.
ALL DIMENSIONS ARE SUBJECT TO JOB-SITE VERIFICATION.

DRAWING NAME:
WVUSOD-F
PROJECT START DATE:
01/05/2013
FINALS START DATE:
02/14/2013
DRAWN BY: TAS
FINALS BY: TAS
CHECKED BY: TJK

REVISIONS:

1	11/11/13	1
2	11/11/13	1
3	11/11/13	1
4	11/11/13	1
5	11/11/13	1
6	11/11/13	1
7	11/11/13	1
8	11/11/13	1
9	11/11/13	1
10	11/11/13	1
11	11/11/13	1
12	11/11/13	1
13	11/11/13	1
14	11/11/13	1
15	11/11/13	1
16	11/11/13	1
17	11/11/13	1
18	11/11/13	1
19	11/11/13	1
20	11/11/13	1
21	11/11/13	1
22	11/11/13	1
23	11/11/13	1
24	11/11/13	1
25	11/11/13	1
26	11/11/13	1
27	11/11/13	1
28	11/11/13	1
29	11/11/13	1
30	11/11/13	1
31	11/11/13	1
32	11/11/13	1
33	11/11/13	1
34	11/11/13	1
35	11/11/13	1
36	11/11/13	1
37	11/11/13	1
38	11/11/13	1
39	11/11/13	1
40	11/11/13	1
41	11/11/13	1
42	11/11/13	1
43	11/11/13	1
44	11/11/13	1
45	11/11/13	1
46	11/11/13	1
47	11/11/13	1
48	11/11/13	1
49	11/11/13	1
50	11/11/13	1
51	11/11/13	1
52	11/11/13	1
53	11/11/13	1
54	11/11/13	1
55	11/11/13	1
56	11/11/13	1
57	11/11/13	1
58	11/11/13	1
59	11/11/13	1
60	11/11/13	1
61	11/11/13	1
62	11/11/13	1
63	11/11/13	1
64	11/11/13	1
65	11/11/13	1
66	11/11/13	1
67	11/11/13	1
68	11/11/13	1
69	11/11/13	1
70	11/11/13	1
71	11/11/13	1
72	11/11/13	1
73	11/11/13	1
74	11/11/13	1
75	11/11/13	1
76	11/11/13	1
77	11/11/13	1
78	11/11/13	1
79	11/11/13	1
80	11/11/13	1
81	11/11/13	1
82	11/11/13	1
83	11/11/13	1
84	11/11/13	1
85	11/11/13	1
86	11/11/13	1
87	11/11/13	1
88	11/11/13	1
89	11/11/13	1
90	11/11/13	1
91	11/11/13	1
92	11/11/13	1
93	11/11/13	1
94	11/11/13	1
95	11/11/13	1
96	11/11/13	1
97	11/11/13	1
98	11/11/13	1
99	11/11/13	1
100	11/11/13	1

SCALE: 3/16"=1'-0"
SHT. SIZE: D
PLUMBING PLAN
PO.3

**PROST & PERIO OFFICES
PROPOSED DENTAL PLUMBING SPECIFICATIONS**
3/16" = 1'-0"

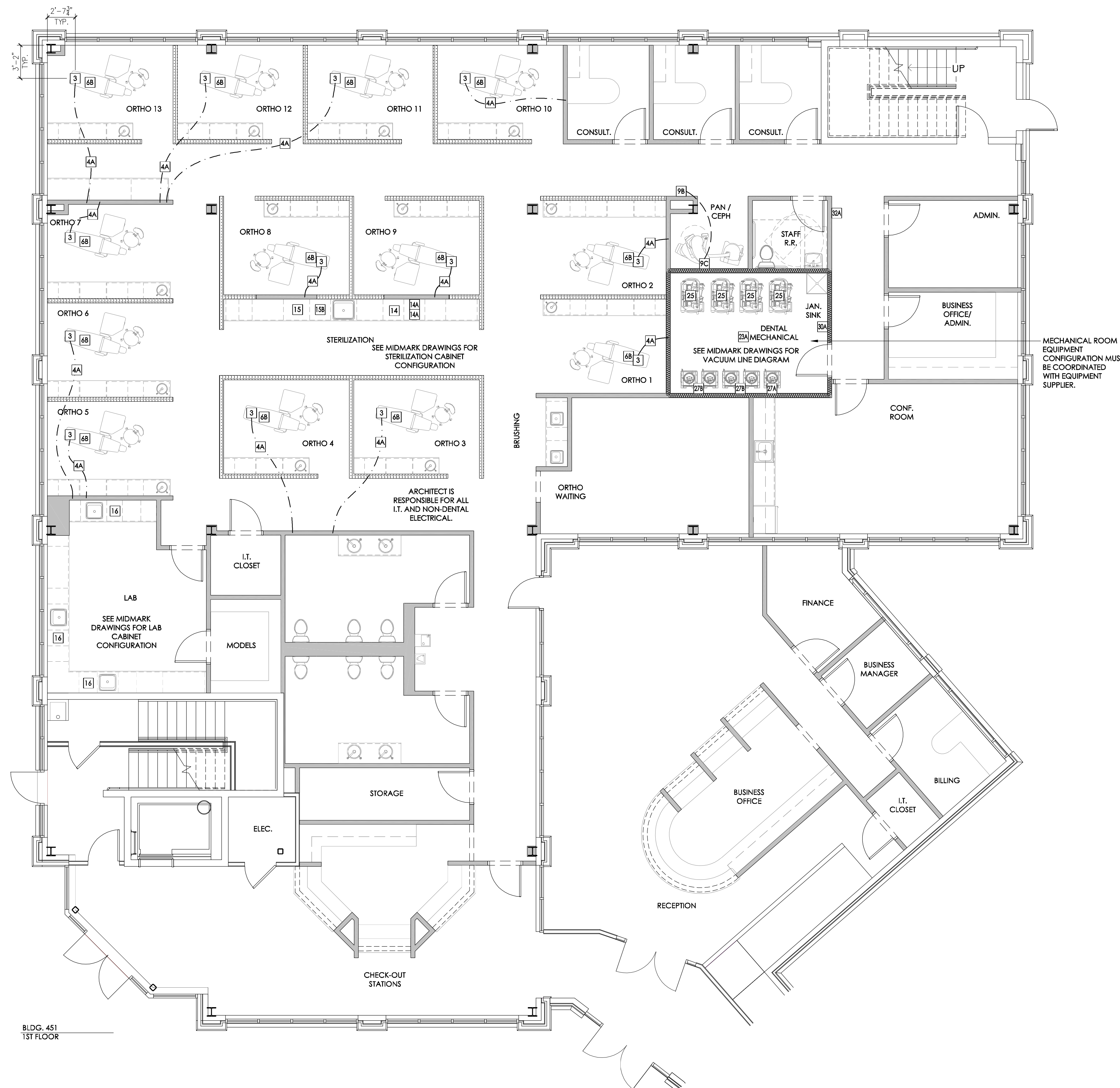
ELECTRICAL NOTES

1. THIS SPECIFICATION SHEET IS INTENDED AS A GUIDE FOR TRADESMEN. THE FLOOR PLANS ENCLOSED HEREIN ARE SUGGESTIONS FOR THE PLACEMENT OF DENTAL EQUIPMENT. THEY ARE NOT INTENDED FOR CONSTRUCTION.
2. EXACT EQUIPMENT LOCATIONS MUST BE JOB SITE VERIFIED BY THE HENRY SCHEIN DENTAL EQUIPMENT SPECIALIST.
3. FOLLOW MANUFACTURER'S DRAWINGS FOR EXACT REQUIREMENTS FOR ANY EQUIPMENT SUPPLIED BY HENRY SCHEIN DENTAL. CONSULT WITH HENRY SCHEIN DENTAL REP FOR ADDITIONAL INFORMATION.
4. GFCI PROTECTION OR REDUNDANT GROUND IN DENTAL CHAIR RECEPTACLES, DENTAL UTILITY CABINETS AND ANY OTHER AREAS REQUIRED BY LOCAL CODE IS THE RESPONSIBILITY OF THE ELECTRICAL CONTRACTOR.
5. ADDITIONAL CONVENIENCE OUTLETS REQUIRED ON JOBSITE ARE THE RESPONSIBILITY OF ELECTRICAL CONTRACTORS. FOLLOW LOCAL CODE RESTRICTIONS.
6. ALL COMPUTER NETWORKING AND WORKSTATIONS MUST BE SPECIFIED BY CUSTOMER'S COMPUTER SUPPLIER. IF HENRY SCHEIN WILL BE SUPPLYING THE COMPUTER NETWORKING SYSTEM, SEE SHEET SE.2 FOR THE OFFICE AUTOMATION PLAN.

SEE SHEETS MD.1 & MD.2 FOR ILLUSTRATIONS & DETAILS

ELECTRICAL SPECIFICATIONS

QUANTITY	SPEC. NUMBER	DESCRIPTION	UTILITIES					
			ELECTRICAL (SEE DETAILS FOR REQUIREMENTS)	VOLTAGE & AMPS	DEDICATED CIRCUIT LOW VOLTAGE CONTROL	REMOTE SWITCH	MECHANICAL DETAIL	CONSTRUCTION DETAIL
13	3	UTILITY CENTER - CONTRACTOR TO PROVIDE REQ'D UTILITIES. BACK FLOW PREVENTION REQUIRED AS PER LOCAL CODE.		• 115V, 20A				3
13	4A	2" CONDUIT - PIPE CHASE WITH PULL-STRING SUPPLIED AND INSTALLED BY CONTRACTOR.						
13	6B	DENTAL LIGHT (CHAIR MOUNTED) - TIED IN AT POWER FOR CHAIR. LIGHT SUPPLIED AND INSTALLED BY HENRY SCHEIN DENTAL.		• 115V, 15A				
1	9B	X-RAY REMOTE EXPOSURE BUTTON - CONTRACTOR TO SUPPLY AND INSTALL PIPE CHASE WITH PULL-STRING TO (9A) OR (9C) LOCATION. VERIFY SUPPLIER OF EXPOSURE BUTTON AND WIRING WITH HENRY SCHEIN EQUIPMENT SPECIALIST. FINAL CONNECTION BY HENRY SCHEIN DENTAL.				•		9B
1	9C	PANORAMIC AND/OR CEPHALOMETRIC XRAY/ CONE BEAM UNIT - CONTRACTOR TO PROVIDE REQ'D UTILITIES. REQUIRES A 3 WIRE GROUNDED CIRCUIT. X-RAY UNIT SUPPLIED AND INSTALLED BY HENRY SCHEIN DENTAL.		• 115V & 230V, 20A		•		9C
1	14	STERILIZER (SINGLE CASSETTE) - CONTRACTOR TO PROVIDE REQ'D UTILITIES. STERILIZER SUPPLIED AND INSTALLED BY HENRY SCHEIN DENTAL. VERIFY IF SWITCHED OUTLET IS REQ'D.		• 115V, 15A		•		
2	14A	STERILIZER (AUTO-CLAVE) - CONTRACTOR TO PROVIDE REQ'D UTILITIES. STERILIZER SUPPLIED AND INSTALLED BY HENRY SCHEIN DENTAL. VERIFY IF SWITCHED OUTLET IS REQ'D.		• 115V, 15A		•		
1	15	ULTRASONIC CLEANER - CONTRACTOR TO PROVIDE REQ'D UTILITIES. CLEANER SUPPLIED AND INSTALLED BY HENRY SCHEIN DENTAL.		• 115V, 15A				15
1	15B	HANDPIECE MAINTENANCE SYSTEM - CONTRACTOR TO PROVIDE REQ'D UTILITIES. 1/2" AIR LINE WITH VALVE STOP (58-145 PSI) ABOVE COUNTERTOP. SYSTEM SUPPLIED AND INSTALLED BY HENRY SCHEIN DENTAL.		• 115V, 15A				15B
3	16	MODEL TRIMMER - CONTRACTOR TO PROVIDE REQ'D UTILITIES. MODEL TRIMMER SUPPLIED AND INSTALLED BY HENRY SCHEIN DENTAL. BACK FLOW PREVENTION REQUIRED PER CODE.		• 115V, 15A				16
1	23A	EXHAUST FAN FOR DENTAL MECHANICAL CLOSET - SUPPLIED AND INSTALLED BY CONTRACTOR. A THERMOSTAT CONTROLLED LOW SONE FAN IS REQUIRED TO KEEP ROOM TEMPERATURE WITHIN THE EQUIPMENT MANUFACTURER'S RECOMMENDED OPERATING TEMPERATURE RANGE. VENT TO OUTSIDE.		• 115V, 20A		•		
4	25	AIR COMPRESSOR W/DRYER - CONTRACTOR TO PROVIDE REQ'D UTILITIES AND FRESH-AIR INTAKE VENT. 1/2" I.D. COPPER TYPE K OR L SUPPLY LINES TO LOCATIONS THAT REQUIRE AIR. BUCK BOOST TRANSFORMER SUPPLIED AND INSTALLED BY CONTRACTOR (IF REQ'D). FINAL CONNECTIONS BY CONTRACTOR.		• 230V, Amps vary		• • •		25
1	27A	VACUUM PUMP (DRY) - CONTRACTOR TO PROVIDE REQ'D UTILITIES. SCH 40 PVC MAIN TRUNK LINES (WHERE PERMITTED BY CODE). TRUNK, REDUCTION AND BRANCH LINE SIZES PER MFR RECOMMENDATIONS. EXHAUST PUMP TO OUTSIDE. BACK FLOW PREVENTION REQ'D PER LOCAL CODE. COLLECTION CANISTER (CAS) SUPPLIED BY HENRY SCHEIN DENTAL. INSTALLED BY CONTRACTOR. BUCK BOOST TRANSFORMER SUPPLIED AND INSTALLED BY CONTRACTOR (IF REQ'D). FINAL CONNECTIONS BY CONTRACTOR. PROVIDE WATER LINE WITH HOSE BIB NEAR UNIT.		• 230V, AMPS VARY		• • • •		27A
2	27B	VACUUM PUMP (DRY) - CONTRACTOR TO PROVIDE REQ'D UTILITIES. SCH 40 PVC MAIN TRUNK LINES (WHERE PERMITTED BY CODE). TRUNK, REDUCTION AND BRANCH LINE SIZES PER MFR RECOMMENDATIONS. EXHAUST PUMP TO OUTSIDE. BACK FLOW PREVENTION REQ'D PER LOCAL CODE. COLLECTION CANISTER (CAS) SUPPLIED BY HENRY SCHEIN DENTAL. INSTALLED BY CONTRACTOR. BUCK BOOST TRANSFORMER SUPPLIED AND INSTALLED BY CONTRACTOR (IF REQ'D). FINAL CONNECTIONS BY CONTRACTOR. PROVIDE WATER LINE WITH HOSE BIB NEAR UNIT.		• (2) 230V, AMPS VARY		• • • •		27B
1	30A	WATER SOLENOID W/FILTER - CONTRACTOR TO PROVIDE REQ'D UTILITIES. SOLENOID SUPPLIED BY HENRY SCHEIN DENTAL, INSTALLED BY CONTRACTOR ON COLD WATER SUPPLY LINE (FOR DENTAL EQUIPMENT ONLY).		• 115V, 15A		• •		30A
1	32A	REMOTE PANEL (AIR, WATER, & 2 VAC) - SUPPLIED BY HENRY SCHEIN DENTAL, INSTALLED BY CONTRACTOR 60" A.F.F. CONTRACTOR TO SUPPLY AND INSTALL LOW VOLTAGE WIRING PER MFR SPECS.				•		32A



**ORTHO OFFICE & CONNECTOR
PROPOSED DENTAL ELECTRICAL SPECIFICATIONS**
3/16" = 1'-0"

HENRY SCHEIN[®]
DENTAL
10920 WEST LINCOLN AVENUE
WEST ALLIS, WI 53227
(800) 336-8977

WVUSOD
ORTHO & CONNECTOR

PROJECT:
HENRY SCHEIN REP:
JERRY INGAGLIATO
CENTER:
PITTSBURGH, PA
PHONE #:
(412) 287-0831

-IMPORTANT NOTE-
THIS DOCUMENT HAS BEEN PREPARED AS AN INSTRUMENT OF PROFESSIONAL SERVICE AND IS NOT AN ARCHITECTURAL PLAN. THE IDEAS/ DESIGNS INCLUDED HEREIN ARE THE SOLE PROPERTY OF HENRY SCHEIN DENTAL AND ARE PROTECTED UNDER COPYRIGHT. THEY MAY NOT BE USED OR REPRODUCED WITHOUT EXPRESS WRITTEN CONSENT OF HENRY SCHEIN AND FULL PAYMENT OF ANY ASSOCIATED DESIGN FEES.
ALL DIMENSIONS ARE SUBJECT TO JOB-SITE VERIFICATION.

DRAWING NAME:
WVUSOD-F
PROJECT START DATE:
01/05/2013
FINALS START DATE:
02/14/2013
DRAWN BY: TAS
FINALS BY: TAS
CHECKED BY: TJK

REVISIONS:

INT. SQ. FT. =

SCALE: 3/16" = 1'-0"
SHT. SIZE: D
ELECTRICAL PLAN

E0.1

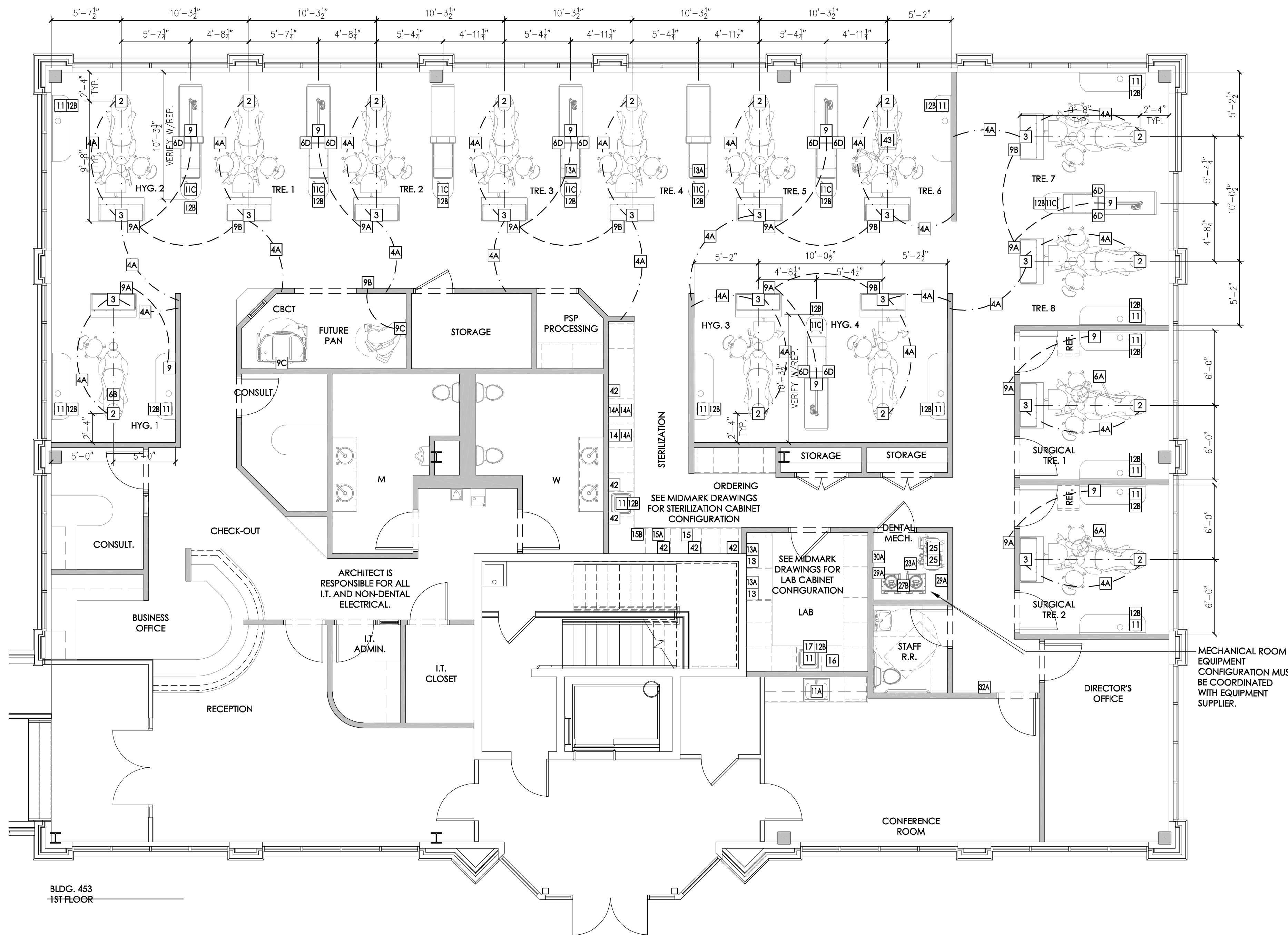
ELECTRICAL NOTES

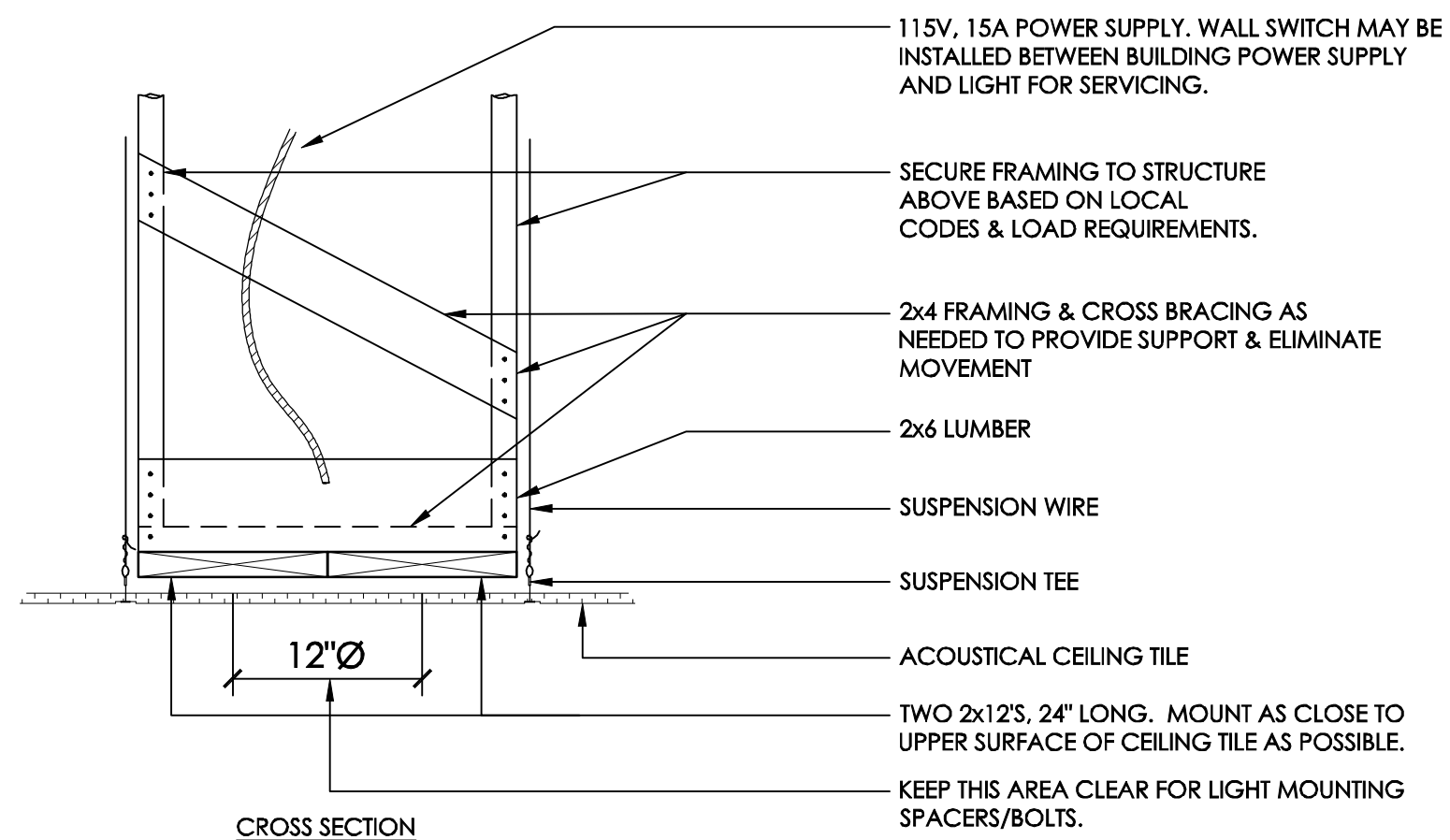
1. THIS SPECIFICATION SHEET IS INTENDED AS A GUIDE FOR TRADESMEN. THE FLOOR PLANS ENCLOSED HEREIN ARE SUGGESTIONS FOR THE PLACEMENT OF DENTAL EQUIPMENT. THEY ARE NOT INTENDED FOR CONSTRUCTION.
2. EXACT EQUIPMENT LOCATIONS MUST BE JOB SITE VERIFIED BY THE HENRY SCHEIN DENTAL EQUIPMENT SPECIALIST.
3. FOLLOW MANUFACTURER'S DRAWINGS FOR EXACT REQUIREMENTS FOR ANY EQUIPMENT SUPPLIED BY HENRY SCHEIN DENTAL. CONSULT WITH HENRY SCHEIN DENTAL REP FOR ADDITIONAL INFORMATION.
4. GFCI PROTECTION OR REDUNDANT GROUND IN DENTAL CHAIR RECEPTACLES, DENTAL UTILITY CABINETS AND ANY OTHER AREAS REQUIRED BY LOCAL CODE IS THE RESPONSIBILITY OF THE ELECTRICAL CONTRACTOR.
5. ADDITIONAL CONVENIENCE OUTLETS REQUIRED ON JOBSITE ARE THE RESPONSIBILITY OF ELECTRICAL CONTRACTORS. FOLLOW LOCAL CODE RESTRICTIONS.
6. ALL COMPUTER NETWORKING AND WORKSTATIONS MUST BE SPECIFIED BY CUSTOMER'S COMPUTER SUPPLIER. IF HENRY SCHEIN WILL BE SUPPLYING THE COMPUTER NETWORKING SYSTEM, SEE SHEET SE.2 FOR THE OFFICE AUTOMATION PLAN.

SEE SHEETS MD.1 & MD.2 FOR ILLUSTRATIONS & DETAILS

ELECTRICAL SPECIFICATIONS

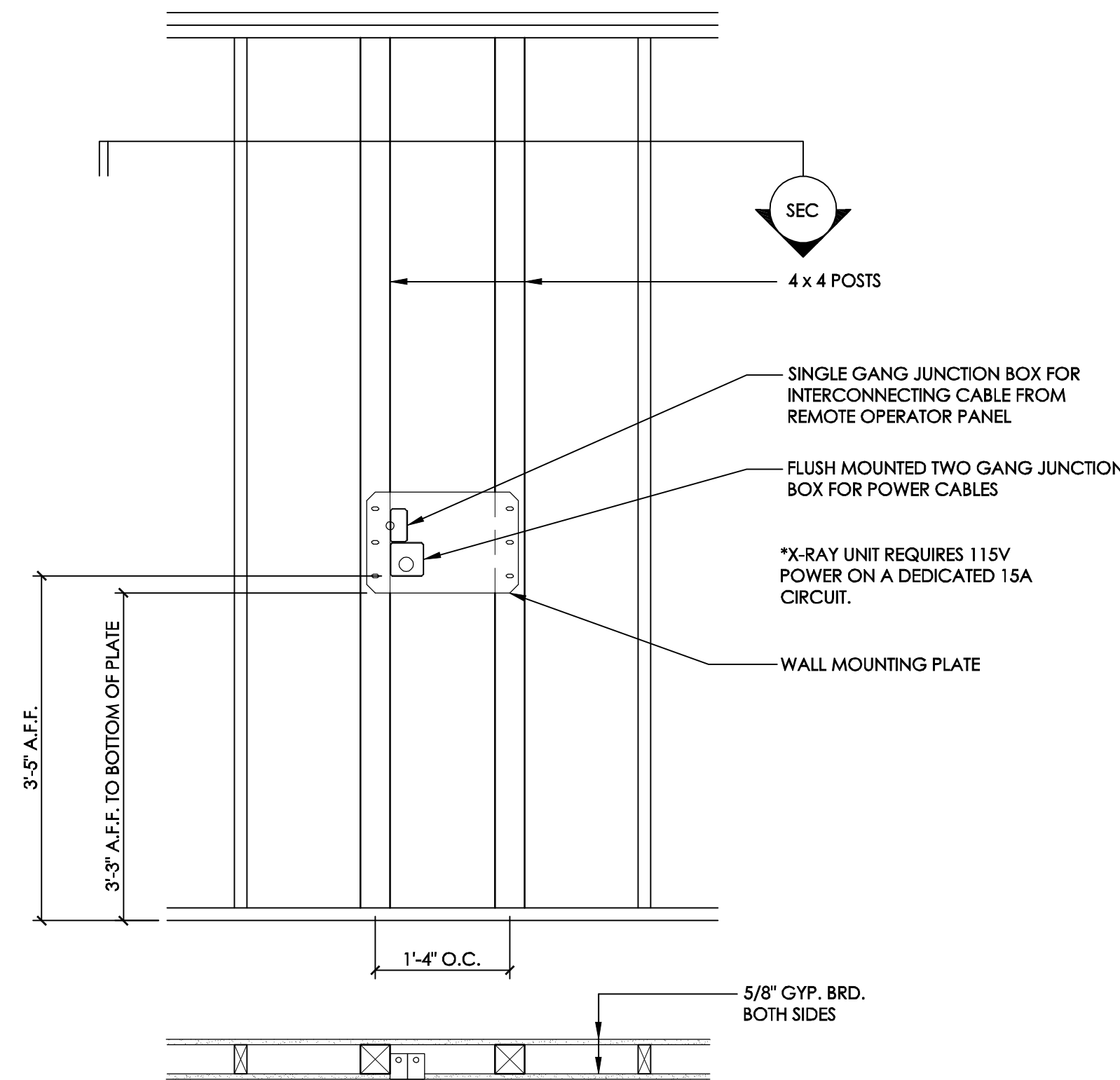
QUANTITY	SPEC. NUMBER	DESCRIPTION	UTILITIES					
			ELECTRICAL (SEE DETAILS FOR REQUIREMENTS)	VOLTAGE & AMPS	DENEGATED CIRCUIT	LOW VOLTAGE CONTROL	REMOTE SWITCH	MECHANICAL DETAIL
14	2	UTILITY CENTER - CONTRACTOR TO PROVIDE REQ'D UTILITIES. BACK FLOW PREVENTION REQUIRED AS PER LOCAL CODE.	•	115V, 20A				2
14	3	UTILITY CENTER - CONTRACTOR TO PROVIDE REQ'D UTILITIES. BACK FLOW PREVENTION REQUIRED AS PER LOCAL CODE.	•	115V, 20A				3
26	4A	2" CONDUIT - PIPE CHASE WITH PULL-STRING SUPPLIED AND INSTALLED BY CONTRACTOR.						
2	6A	DENTAL CEILING LIGHT - CONTRACTOR TO PROVIDE REQ'D UTILITIES AND MOUNTING SUPPORT. LIGHT SUPPLIED AND INSTALLED BY HENRY SCHEIN DENTAL.	•	115V, 15A				6A
1	6B	DENTAL LIGHT (CHAIR MOUNTED) - TIED IN AT POWER FOR CHAIR. LIGHT SUPPLIED AND INSTALLED BY HENRY SCHEIN DENTAL.	•	115V, 15A				
11	6D	DENTAL LIGHT (CENTER CABINET MOUNTED) - TIED IN AT POWER FOR CENTER CABINET (11C). LIGHT SUPPLIED AND INSTALLED BY HENRY SCHEIN DENTAL.	•	115V, 15A				
6	9	ISLAND CABINET MOUNTED INTRAORAL X-RAY HEAD, ARM, AND WALL BRACKET - CONTRACTOR TO PROVIDE POWER AT LOCATION SHOWN ON ISLAND CABINET DETAIL. X-RAY UNIT SUPPLIED AND INSTALLED BY HENRY SCHEIN DENTAL. REQUIRES A 3 WIRE GROUNDED CIRCUIT.	•	115V, 15A	•			11C
3	9	WALL MOUNTED INTRAORAL X-RAY HEAD, ARM, AND WALL BRACKET - CONTRACTOR TO PROVIDE REQ'D UTILITIES AND MOUNTING SUPPORT. X-RAY UNIT SUPPLIED AND INSTALLED BY HENRY SCHEIN DENTAL. REQUIRES A 3 WIRE GROUNDED CIRCUIT.	•	115V, 15A	•			9
9	9A	X-RAY MASTER CONTROL - CONTRACTOR TO SUPPLY AND INSTALL PIPE CHASE WITH PULL-STRING TO (9) LOCATION WHEN (9A) IS REMOTE. VERIFY SUPPLIER OF WIRING WITH HENRY SCHEIN EQUIPMENT SPECIALIST. FINAL CONNECTION BY HENRY SCHEIN DENTAL.			•			9A
6	9B	X-RAY REMOTE EXPOSURE BUTTON - CONTRACTOR TO SUPPLY AND INSTALL PIPE CHASE WITH PULL-STRING TO (9A) OR (9C) LOCATION. VERIFY SUPPLIER OF EXPOSURE BUTTON AND WIRING WITH HENRY SCHEIN EQUIPMENT SPECIALIST. FINAL CONNECTION BY HENRY SCHEIN DENTAL.			•			9B
2	9C	PANORAMIC AND/OR CEPHALOMETRIC XRAY/ CONE BEAM UNIT - CONTRACTOR TO PROVIDE REQ'D UTILITIES. REQUIRES A 3 WIRE GROUNDED CIRCUIT. X-RAY UNIT SUPPLIED AND INSTALLED BY HENRY SCHEIN DENTAL.	•	115V & 230V, 20A	•			9C
8	11C	CENTER ISLAND CABINET - CONTRACTOR TO PROVIDE REQ'D UTILITIES. CABINET SUPPLIED AND INSTALLED BY HENRY SCHEIN DENTAL. SINK AND FAUCET TO BE INSTALLED BY CONTRACTOR. FINAL CONNECTIONS BY CONTRACTOR.	•	115V, 20A				11C
1	14	STERILIZER (SINGLE CASSETTE) - CONTRACTOR TO PROVIDE REQ'D UTILITIES. STERILIZER SUPPLIED AND INSTALLED BY HENRY SCHEIN DENTAL. VERIFY IF SWITCHED OUTLET IS REQ'D.	•	115V, 15A	•			
3	14A	STERILIZER (AUTO-CLAVE) - CONTRACTOR TO PROVIDE REQ'D UTILITIES. STERILIZER SUPPLIED AND INSTALLED BY HENRY SCHEIN DENTAL. VERIFY IF SWITCHED OUTLET IS REQ'D.	•	115V, 15A	•			
1	15	ULTRASONIC CLEANER - CONTRACTOR TO PROVIDE REQ'D UTILITIES. CLEANER SUPPLIED AND INSTALLED BY HENRY SCHEIN DENTAL.	•	115V, 15A	•			15
1	15A	INSTRUMENT WASHER (HYDRIM) - CONTRACTOR TO PROVIDE REQ'D UTILITIES. WASHER SUPPLIED AND INSTALLED BY HENRY SCHEIN DENTAL.	•	208-240V, 15A	•			15A
1	15B	HANDPIECE MAINTENANCE SYSTEM - CONTRACTOR TO PROVIDE REQ'D UTILITIES. 1/2" AIR LINE WITH VALVE STOP (58-145 PSI) ABOVE COUNTERTOP. SYSTEM SUPPLIED AND INSTALLED BY HENRY SCHEIN DENTAL.	•	115V, 15A	•			15B
1	16	MODEL TRIMMER - CONTRACTOR TO PROVIDE REQ'D UTILITIES. MODEL TRIMMER SUPPLIED AND INSTALLED BY HENRY SCHEIN DENTAL. BACK FLOW PREVENTION REQUIRED PER CODE.	•	115V, 15A	•			16
1	23A	EXHAUST FAN FOR DENTAL MECHANICAL CLOSET - SUPPLIED AND INSTALLED BY CONTRACTOR. A THERMOSTAT CONTROLLED LOW SPEED FAN IS REQUIRED TO KEEP ROOM TEMPERATURE WITHIN THE EQUIPMENT MANUFACTURER'S RECOMMENDED OPERATING TEMPERATURE RANGE. VENT TO OUTSIDE.	•	115V, 20A	•			
2	25	AIR COMPRESSOR W/DRYER - CONTRACTOR TO PROVIDE REQ'D UTILITIES AND FRESH-AIR INTAKE VENT. 1/2" I.D. COPPER TYPE K OR L SUPPLY LINES TO LOCATIONS THAT REQUIRE AIR. BUCK BOOST TRANSFORMER SUPPLIED AND INSTALLED BY CONTRACTOR (IF REQ'D). FINAL CONNECTIONS BY CONTRACTOR.	•	230V, Amps vary	•	•	•	25
1	27B	VACUUM PUMP (DRY) - CONTRACTOR TO PROVIDE REQ'D UTILITIES. SCH 40 PVC MAIN TRUNK LINES (WHERE PERMITTED BY CODE). TRUNK, REDUCTION AND BRANCH LINE SIZES PER MFR RECOMMENDATIONS. EXHAUST PUMP TO OUTSIDE. BACK FLOW PREVENTION REQ'D PER LOCAL CODE. COLLECTION CANISTER (CAS) SUPPLIED BY HENRY SCHEIN DENTAL. INSTALLED BY CONTRACTOR. BUCK BOOST TRANSFORMER SUPPLIED AND INSTALLED BY CONTRACTOR (IF REQ'D). FINAL CONNECTIONS BY CONTRACTOR. PROVIDE WATER LINE WITH HOSE BIB NEAR UNIT.	•	{2} 230V, AMPS VARY	•	•	•	27B
1	30A	WATER SOLENOID W/FILTER - CONTRACTOR TO PROVIDE REQ'D UTILITIES. SOLENOID SUPPLIED BY HENRY SCHEIN DENTAL. INSTALLED BY CONTRACTOR ON COLD WATER SUPPLY LINE (FOR DENTAL EQUIPMENT ONLY).	•	115V, 15A	•	•	•	30A
1	32A	REMOTE PANEL (AIR, WATER, & 2 VAC) - SUPPLIED BY HENRY SCHEIN DENTAL. INSTALLED BY CONTRACTOR 60" A.F.F. CONTRACTOR TO SUPPLY AND INSTALL LOW VOLTAGE WIRING PER MFR SPECS.	•		•			32A
6	42	TASK LIGHTING - CONTRACTOR TO PROVIDE REQ'D UTILITIES. LIGHTS SUPPLIED BY HENRY SCHEIN DENTAL. INSTALLED BY CONTRACTOR.	•	115V, AMPS VARY	•			
1	43	CEILING MOUNTED MICROSCOPE - CONTRACTOR TO PROVIDE REQ'D UTILITIES. MICROSCOPE SUPPLIED AND INSTALLED BY HENRY SCHEIN DENTAL. EXACT LOCATION PER HENRY SCHEIN DENTAL EQUIPMENT SPECIALIST.	•	115V, AMPS VARY	•			43





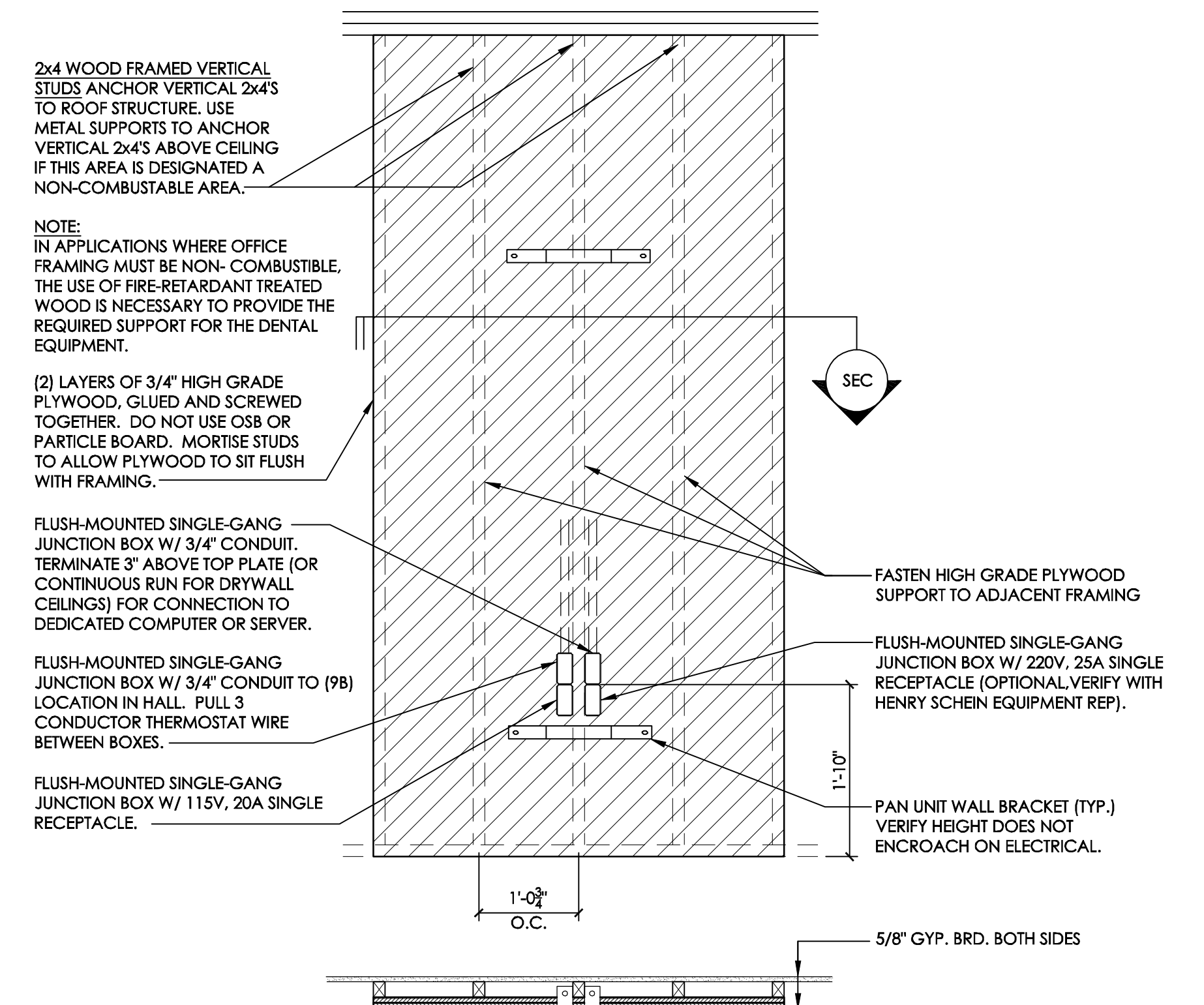
NOTES:
 1. CEILING MOUNTED LIGHT SUPPORTS SHALL WITHSTAND A 200 LB. LIVE LOAD. FRAMING SHALL BE BRACED LATERALLY AND LONGITUDINALLY TO PROVIDE A RIGID AND LEVEL SUPPORT.
 2. WHERE REQUIRED BY LOCAL CODE, NON-COMBUSTIBLE MATERIALS AND/OR 5/8" FIRE CODE RATED GYP. BRD. TO WRAP THIS SUPPORT MAY BE REQUIRED FOR FIRE RATED CEILINGS. VERIFY EXACT REQUIREMENTS WITH LOCAL AUTHORITIES.
 3. THIS IS A TYPICAL INSTALLATION. CONSULT HENRY SCHEIN DENTAL EQUIPMENT SALES SPECIALIST FOR EXACT REQUIREMENTS AND SPECS OF EQUIPMENT TO BE INSTALLED ON SITE.
 4. MOUNTING MATERIALS SUPPLIED AND INSTALLED BY CONTRACTOR.

D-6A CEILING MOUNTED POST LIGHT
 NOT TO SCALE



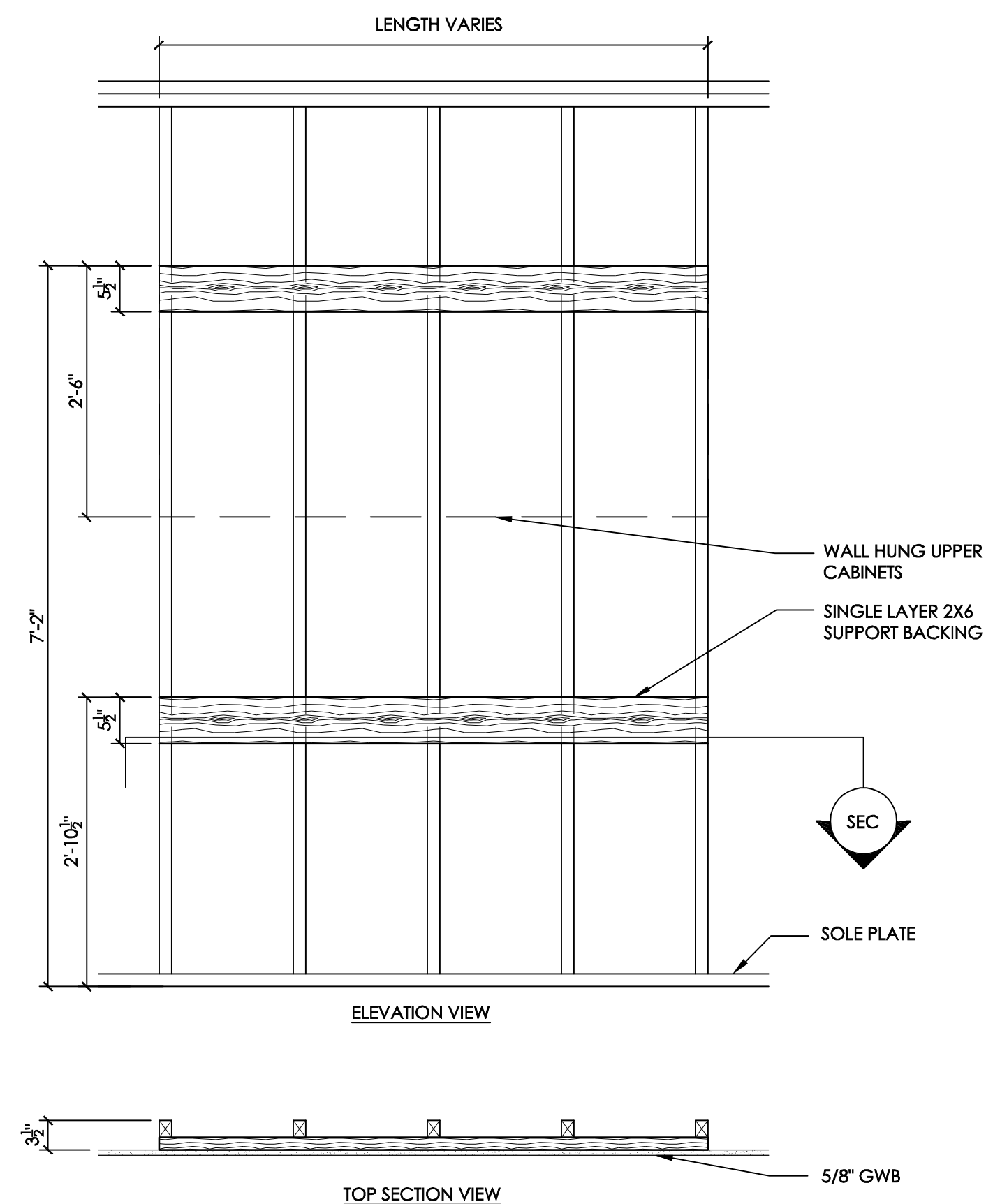
SEE MANUFACTURER'S INSTALLATION TEMPLATE FOR MORE DETAIL.
 THE WALL SUPPORT AND MOUNTING HARDWARE FOR THE UNIT MUST WITHSTAND A 100 LB. SHEAR LOAD AND A 400 LB. WITHDRAWAL FORCE AT EACH OF THE MOUNTING BOLTS. THE WALL FABRICATION AND ATTACHMENTS TO THE BUILDING STRUCTURE MUST BE CAPABLE OF WITHSTANDING A LOAD MOMENT OF 850 FT. LBS. AS OUTLINED IN THE MANUFACTURER'S INSTALLATION MANUAL.
 MOUNTING MATERIALS SUPPLIED AND INSTALLED BY CONTRACTOR.

D-9 PROGENY JB-70/PREVA X-RAY SUPPORT
 SCALE: 3/4" = 1'-0"

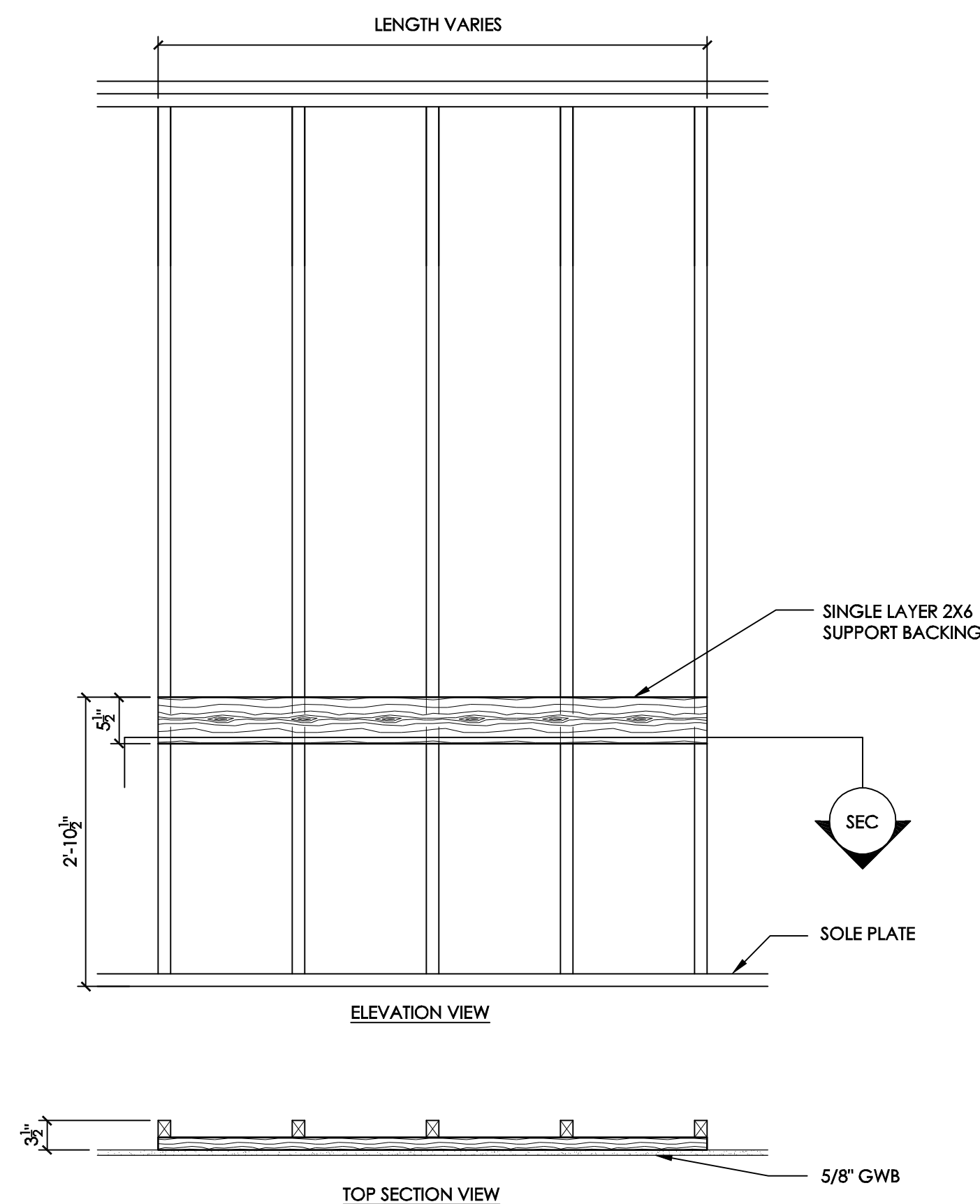


SEE MANUFACTURER'S INSTALLATION TEMPLATE FOR MORE DETAIL.
 X-RAY SUPPORT WALLS TO BE FRAMED WITH 1 1/2" (MAX) O.C. STUDS EXCEPT AT PAN LOCATION IN ORDER TO PROVIDE PROPER WALL SUPPORT & ELIMINATE MOVEMENT.
 MOUNTING MATERIALS SUPPLIED AND INSTALLED BY CONTRACTOR.

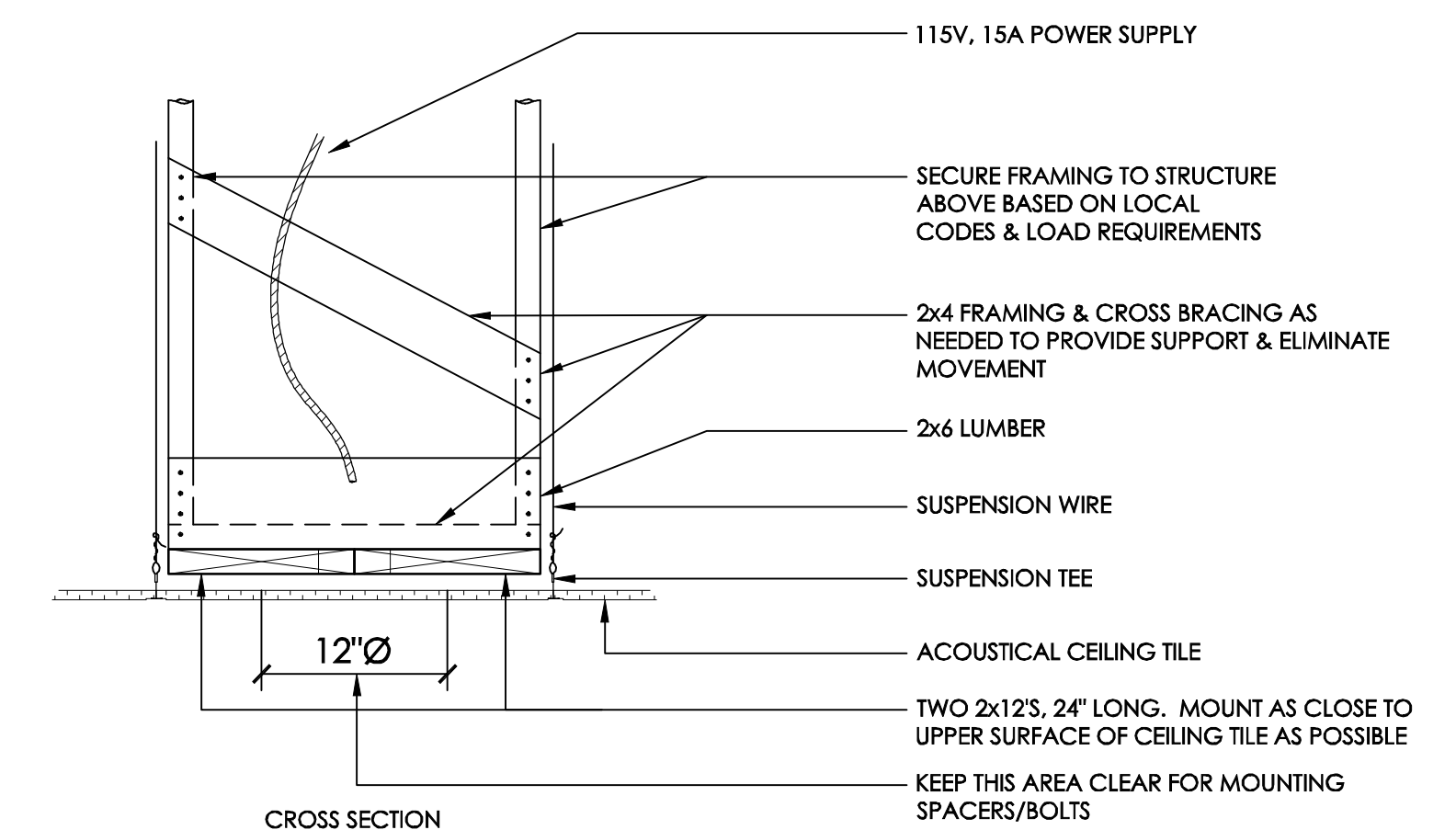
D-9C PAN X-RAY
 NOT TO SCALE



D-35 MIDMARK CABINETRY BLOCKING
 SCALE: 3/4" = 1'-0"

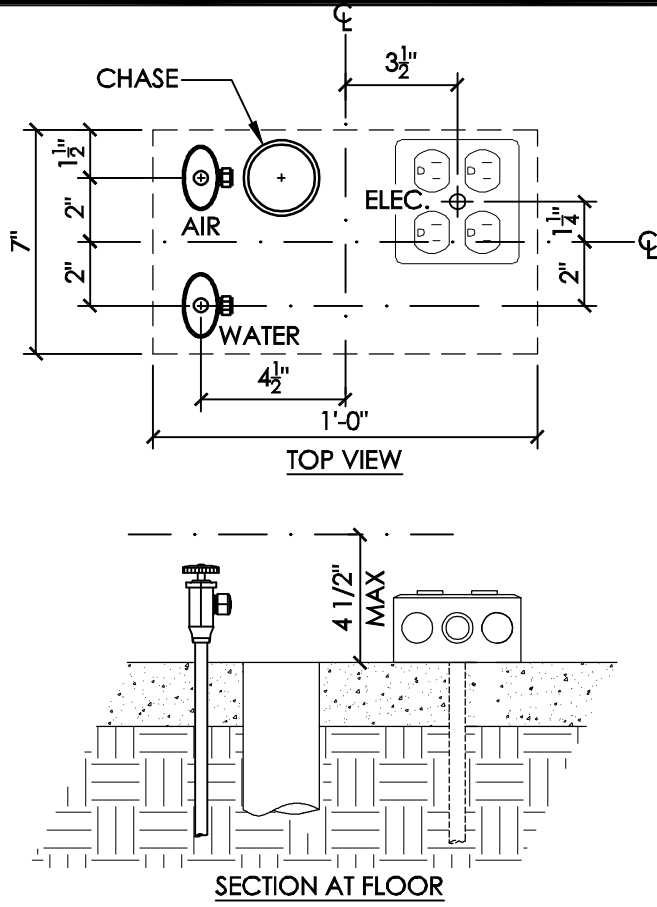


D-35A MIDMARK CABINETRY BLOCKING
 SCALE: 3/4" = 1'-0"



NOTES:
 1. CEILING MOUNTED MICROSCOPE SUPPORTS SHALL WITHSTAND A 200 LB. LIVE LOAD. FRAMING SHALL BE BRACED LATERALLY AND LONGITUDINALLY TO PROVIDE A RIGID AND LEVEL SUPPORT.
 2. WHERE REQUIRED BY LOCAL CODE, NON-COMBUSTIBLE MATERIALS AND/OR 5/8" FIRE CODE RATED GYP. BRD. TO WRAP THIS SUPPORT MAY BE REQUIRED FOR FIRE RATED CEILINGS. VERIFY EXACT REQUIREMENTS WITH LOCAL AUTHORITIES.
 3. THIS IS A TYPICAL INSTALLATION. CONSULT HENRY SCHEIN DENTAL EQUIPMENT SALES SPECIALIST FOR EXACT REQUIREMENTS AND SPECS OF EQUIPMENT TO BE INSTALLED ON SITE.
 4. MOUNTING MATERIALS SUPPLIED AND INSTALLED BY CONTRACTOR.

D-43 CEILING MOUNTED MICROSCOPE
 NOT TO SCALE



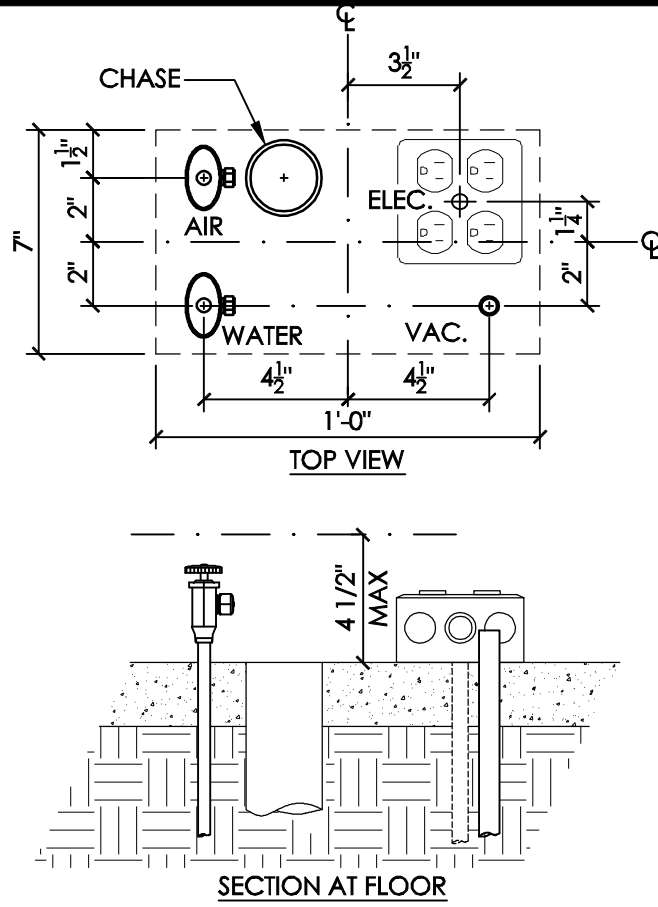
GENERAL NOTES:
 -THIS DETAIL IS FOR INFORMATIONAL PURPOSES ONLY. DENTAL DEALER WILL PROVIDE INSTALLATION TEMPLATES FOR ANY EQUIPMENT IN QUESTION. REFER TO MANUFACTURER'S INSTALLATION GUIDE/TEMPLATE FOR ADDITIONAL INFORMATION.
 -LICENSED PLUMBERS AND ELECTRICIANS SHALL INSTALL ALL UTILITIES.
-ALL UTILITIES MUST CONFORM WITH PREVAILING LOCAL CODES. NEITHER DENTAL DEALER NOR MANUFACTURER CAN BE HELD RESPONSIBLE FOR AN INSTALLATION WHICH DOES NOT MEET LOCAL ELECTRICAL AND PLUMBING CODES.

AIR: PLUMBING CONTRACTOR TO PROVIDE AND INSTALL A 1/2" COPPER (OR ACCEPTED) SUPPLY LINE FROM AIR COMPRESSOR TO THIS LOCATION. STUB-UP 1-2" FROM FLOOR AND TERMINATE WITH A 90° 1/2" x 3/8" COMPRESSION SHUT-OFF VALVE. FLUSH SYSTEM CLEAN PRIOR TO EQUIPMENT INSTALLATION.

CHASE: ELECTRICAL CONTRACTOR TO PROVIDE A GRAY ELECTRICAL PVC PIPE CHASE WITH PULL-STRING SUB-FLOOR (SEE SPECS 4, 4A SHEET SE.1 FOR SIZE AND LOCATIONS). 6" MIN. RADIUS FOR ALL BENDS. STUB-UP FLUSH WITH SUB-FLOOR. MARK LOCATION OF PIPE AT FINISH.

WATER: PLUMBING CONTRACTOR TO PROVIDE AND INSTALL A 1/2" COPPER (OR ACCEPTED) COLD WATER SUPPLY LINE TO THIS LOCATION. STUB-UP 1-2" FROM FLOOR AND TERMINATE WITH A 90° 1/2" x 3/8" COMPRESSION SHUT-OFF VALVE. FLUSH SYSTEM CLEAN PRIOR TO EQUIPMENT INSTALLATION.

ELECTRICAL: ELECTRICAL CONTRACTOR TO PROVIDE AND INSTALL A 1/2" CONDUIT AND BOX WITH 115V QUAD (OR EQUAL) RECEPTACLE. WIRE BOX PER CODE WITH TOP NO HIGHER THAN 4-1/2" A.F.F.



GENERAL NOTES:
 -THIS DETAIL IS FOR INFORMATIONAL PURPOSES ONLY. DENTAL DEALER WILL PROVIDE INSTALLATION TEMPLATES FOR ANY EQUIPMENT IN QUESTION. REFER TO MANUFACTURER'S INSTALLATION GUIDE/TEMPLATE FOR ADDITIONAL INFORMATION.
 -LICENSED PLUMBERS AND ELECTRICIANS SHALL INSTALL ALL UTILITIES.
-ALL UTILITIES MUST CONFORM WITH PREVAILING LOCAL CODES. NEITHER DENTAL DEALER NOR MANUFACTURER CAN BE HELD RESPONSIBLE FOR AN INSTALLATION WHICH DOES NOT MEET LOCAL ELECTRICAL AND PLUMBING CODES.

AIR: PLUMBING CONTRACTOR TO PROVIDE AND INSTALL A 1/2" COPPER (OR ACCEPTED) SUPPLY LINE FROM AIR COMPRESSOR TO THIS LOCATION. STUB-UP 1-2" FROM FLOOR AND TERMINATE WITH A 90° 1/2" x 3/8" COMPRESSION SHUT-OFF VALVE. FLUSH SYSTEM CLEAN PRIOR TO EQUIPMENT INSTALLATION.

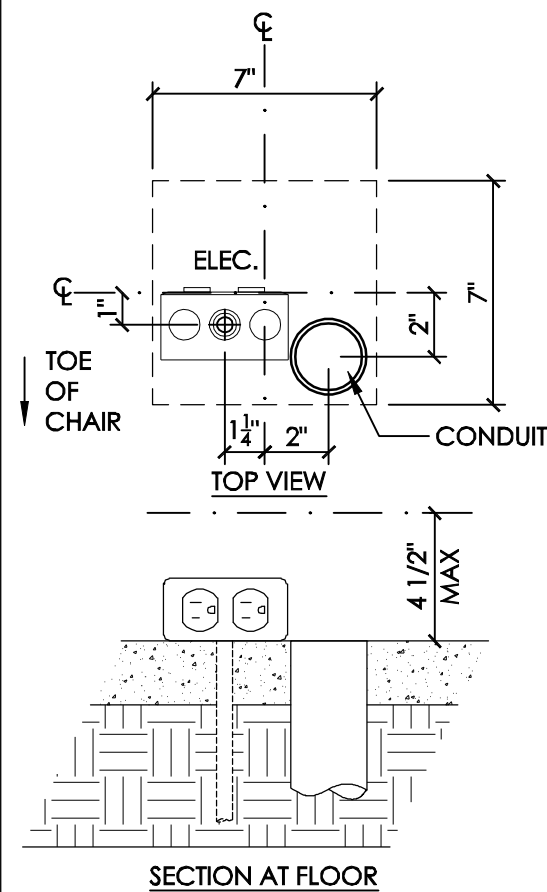
CENTRAL VACUUM: PLUMBING CONTRACTOR TO PROVIDE A BRANCH LINE TO LOCATION SHOWN (SIZE PER CENTRAL VACUUM SUPPLIER). REDUCE TO A 1/2" SCH. 40 PVC (OR COPPER) RISER AT FLOOR. TERMINATE 1-2" ABOVE FINISHED FLOOR FOR CONNECTION TO EQUIPMENT.

WATER: PLUMBING CONTRACTOR TO PROVIDE AND INSTALL A 1/2" COPPER (OR ACCEPTED) COLD WATER SUPPLY LINE TO THIS LOCATION. STUB-UP 1-2" FROM FLOOR AND TERMINATE WITH A 90° 1/2" x 3/8" COMPRESSION SHUT-OFF VALVE. FLUSH SYSTEM CLEAN PRIOR TO EQUIPMENT INSTALLATION.

ELECTRICAL: ELECTRICAL CONTRACTOR TO PROVIDE AND INSTALL A 1/2" CONDUIT AND BOX WITH 115V QUAD (OR EQUAL) RECEPTACLE. WIRE BOX PER CODE WITH TOP NO HIGHER THAN 4-1/2" A.F.F.

D-2 TYPICAL UTILITY CENTER
 NOT TO SCALE

D-3 TYPICAL UTILITY CENTER
 NOT TO SCALE



GENERAL NOTES:
 -THIS DETAIL IS FOR INFORMATIONAL PURPOSES ONLY. DENTAL DEALER WILL PROVIDE INSTALLATION TEMPLATES FOR ANY EQUIPMENT IN QUESTION. REFER TO MANUFACTURER'S INSTALLATION GUIDE/TEMPLATE FOR ADDITIONAL INFORMATION.
 -LICENSED PLUMBERS AND ELECTRICIANS SHALL INSTALL ALL UTILITIES.
-ALL UTILITIES MUST CONFORM WITH PREVAILING LOCAL CODES. NEITHER DENTAL DEALER NOR MANUFACTURER CAN BE HELD RESPONSIBLE FOR AN INSTALLATION WHICH DOES NOT MEET LOCAL ELECTRICAL AND PLUMBING CODES.

ELECTRICAL: ELECTRICAL CONTRACTOR TO PROVIDE AND INSTALL A 1/2" CONDUIT AND BOX WITH 115V DUPLEX (OR EQUAL) RECEPTACLE. WIRE BOX PER CODE WITH TOP NO HIGHER THAN 4-1/2" A.F.F.

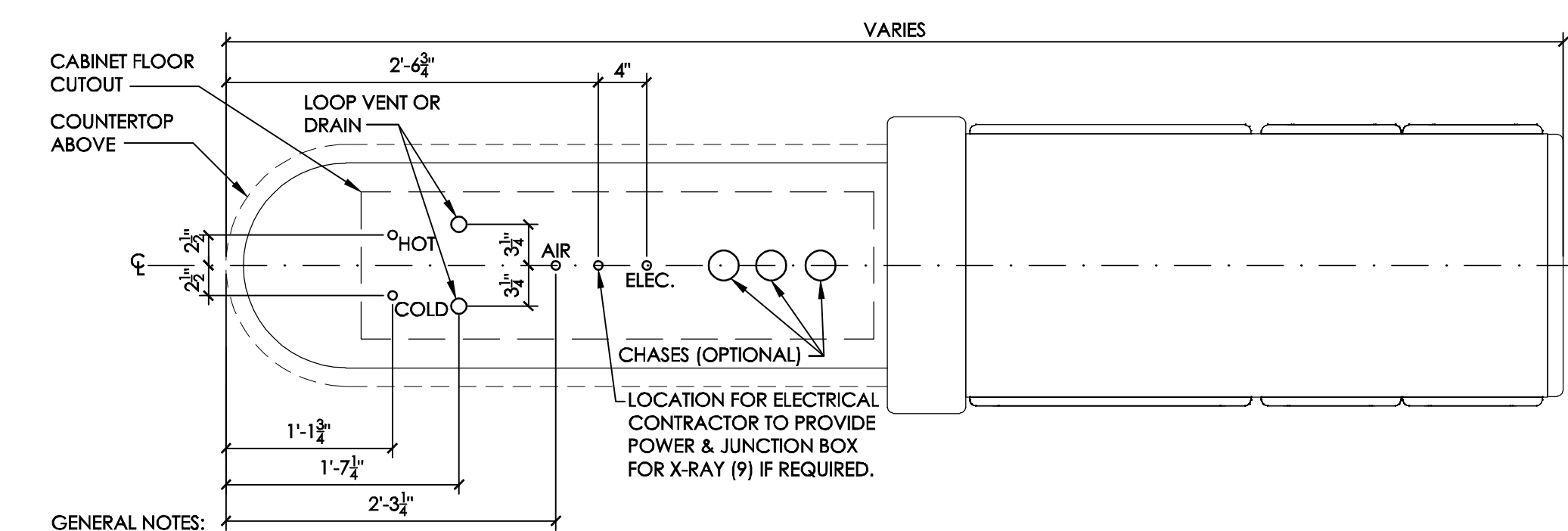
CONDUIT: ELECTRICAL CONTRACTOR TO PROVIDE A GRAY ELECTRICAL PVC PIPE CHASE WITH PULL-STRING SUB-FLOOR (SEE SPECS 4, 4A SHEET SE.1 FOR SIZE AND LOCATIONS). 6" MIN. RADIUS FOR ALL BENDS. STUB-UP FLUSH WITH SUB-FLOOR. MARK LOCATION OF PIPE AT FINISH.

ELECTRICAL CONTRACTOR IS RESPONSIBLE FOR FOLLOWING ALL LOCAL CODES FOR ROUGH INSTALLATION. HENRY SCHEIN TO MAKE FINAL CONNECTIONS.

ELECTRICIAN TO PROVIDE A FLUSH-MOUNTED SINGLE GANG JUNCTION BOX & 3/4" CONDUIT W/ PULL-WIRE FROM OPERATOR PANEL TO X-RAY UNIT.

25' INTERCONNECTING CABLE (PROVIDED BY MFR.) FROM REMOTE OPERATOR PANEL TO X-RAY CONTROL UNIT (SPEC. 9).

SEE MANUFACTURER'S INSTALLATION MANUAL FOR MORE DETAIL.



GENERAL NOTES:
 -THIS DETAIL IS FOR INFORMATIONAL PURPOSES ONLY. DENTAL DEALER WILL PROVIDE INSTALLATION TEMPLATES FOR ANY EQUIPMENT IN QUESTION. REFER TO MANUFACTURER'S INSTALLATION GUIDE/TEMPLATE FOR ADDITIONAL INFORMATION.
 -LICENSED PLUMBERS AND ELECTRICIANS SHALL INSTALL ALL UTILITIES.
-ALL UTILITIES MUST CONFORM WITH PREVAILING LOCAL CODES. NEITHER DENTAL DEALER NOR MANUFACTURER CAN BE HELD RESPONSIBLE FOR AN INSTALLATION WHICH DOES NOT MEET LOCAL ELECTRICAL AND PLUMBING CODES.

ELECTRICAL: ELECTRICAL CONTRACTOR TO PROVIDE A 115V GFCI CIRCUIT PIPED UP THROUGH FLOOR IN RIGID CONDUIT. THIS CIRCUIT IS TO BE FLEXED (USING MC CABLE) TO A JUNCTION BOX INSIDE THE BASE OF THE CABINET. AN ADDITIONAL CIRCUIT MAY BE REQUIRED IF X-RAY (9) IS CALLED FOR WITHIN THE CABINET. SEE PLAN.

AIR: PLUMBING CONTRACTOR TO PROVIDE AND INSTALL A 1/2" COPPER (OR ACCEPTED) SUPPLY LINE FROM AIR COMPRESSOR TO THIS LOCATION. STUB-UP 1-2" FROM FLOOR AND TERMINATE WITH A 90° 3/8" COMPRESSION STOP. FLUSH SYSTEM CLEAN PRIOR TO EQUIPMENT INSTALLATION.

WATER: PLUMBING CONTRACTOR TO PROVIDE AND INSTALL 1/2" COPPER (OR ACCEPTED) WATER SUPPLY LINES TO THIS LOCATION. STUB-UP 1-2" FROM FLOOR AND TERMINATE WITH A 90° 3/8" COMPRESSION STOP. FLUSH SYSTEM CLEAN PRIOR TO EQUIPMENT INSTALLATION.

NOTE: MAXIMUM HEIGHT OF AIR & WATER VALVES SHOULD NOT EXCEED 5" (WHEN FULLY OPENED).

GRAVITY DRAIN: PLUMBING CONTRACTOR TO PROVIDE A COMMON DRAIN LINE TO LOCATION SHOWN (COPPER IS NOT ALLOWED). STUB UP 3" MIN. FOR CONNECTION TO A VENT CAP WITHIN THE CABINET IS A LOOP VENT. CONSULT LOCAL CODES ON WHICH METHOD IS ACCEPTED.

CHASE (OPTIONAL): ELECTRICAL CONTRACTOR TO PROVIDE A GRAY ELECTRICAL PVC PIPE CHASE WITH PULL-STRING SUB-FLOOR (SEE SPECS 4, 4A SHEET SE.1 FOR SIZE AND LOCATIONS). 6" MIN. RADIUS FOR ALL BENDS. STUB-UP FLUSH WITH SUB-FLOOR. MARK LOCATION OF PIPE AT FINISH.

D-5 SURFACE MOUNTED OUTLET @ CHAIR
 NOT TO SCALE

D-11C MIDMARK INTEGRA SERIES ISLAND CABINET UTILITIES
 NOT TO SCALE

ELECTRICAL CONTRACTOR IS RESPONSIBLE FOR FOLLOWING ALL LOCAL CODES FOR ROUGH INSTALLATION. HENRY SCHEIN TO MAKE FINAL CONNECTIONS.

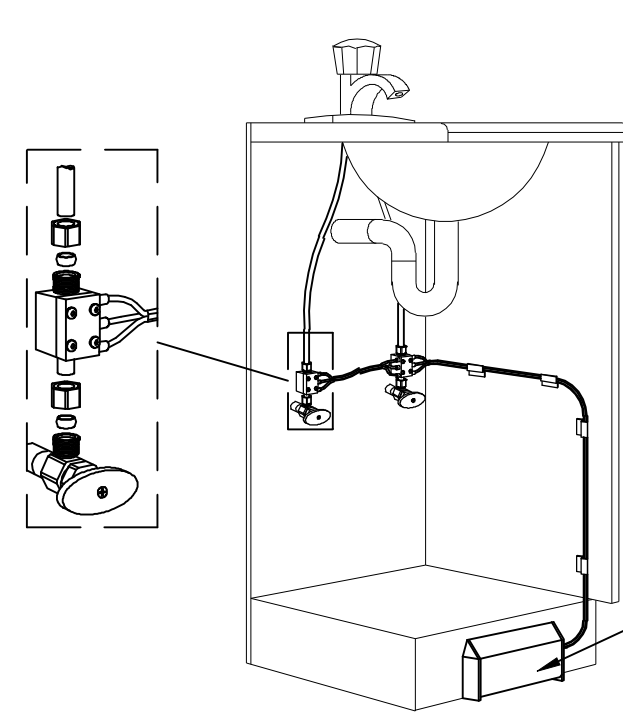
ELECTRICIAN TO PROVIDE A FLUSH-MOUNTED SINGLE GANG JUNCTION BOX & 3/4" CONDUIT W/ PULL-WIRE BETWEEN EXPOSURE BUTTON & X-RAY MASTER CONTROL UNIT.

X-RAY EXPOSURE BUTTON (TYP.)

VERIFY WIRING REQUIREMENTS BETWEEN EXPOSURE BUTTON AND X-RAY MASTER CONTROL UNIT WITH MANUFACTURER'S INSTALLATION MANUAL.

PROVIDED BY HENRY-SCHEIN DENTAL, INSTALLED BY ELECTRICIAN.
 SEE MANUFACTURER'S INSTALLATION MANUAL FOR MORE DETAIL.

D-9A PROGENY REMOTE OPERATOR PANEL
 NOT TO SCALE

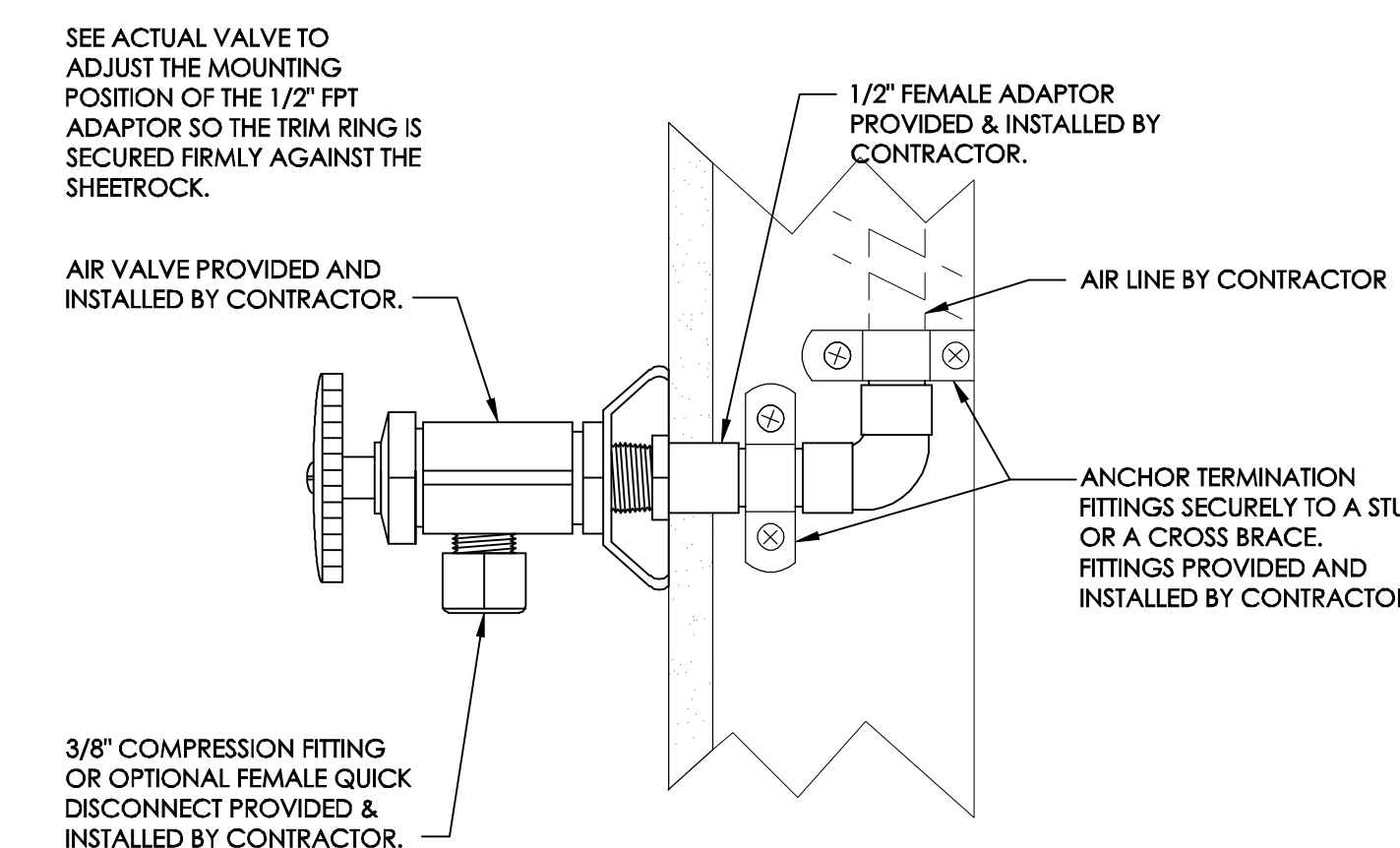


TYPICAL INSTALLATION (MODEL 1750)

VALVE BLOCKS CONNECT IN-LINE ON HOT AND COLD WATER SUPPLIES WITH 3/8" COMPRESSION FITTINGS. KICK PEDAL MOUNTS ON CABINET TOE KICK WITH CONTROL TUBING ROUTED IN BETWEEN.

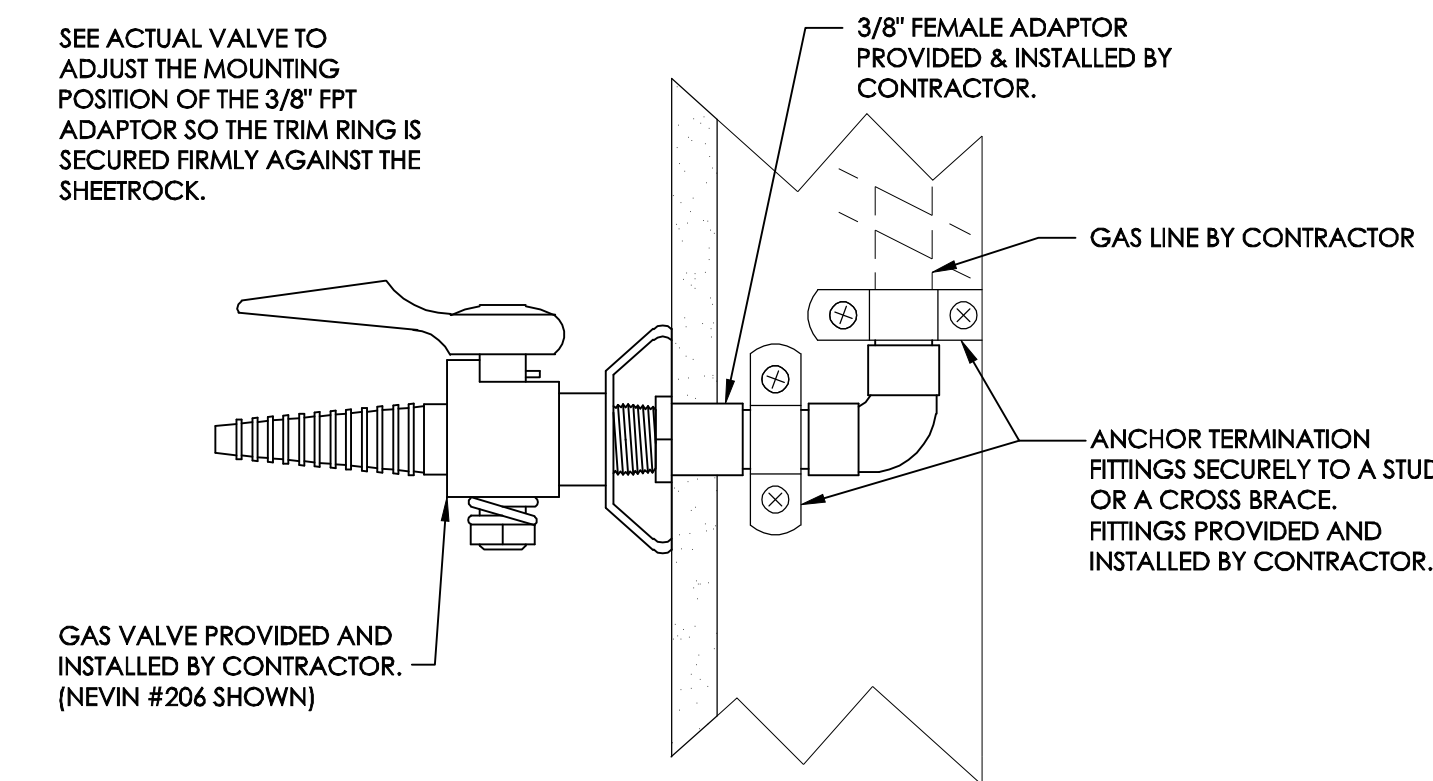
VALVE BLOCKS MAY BE CONNECTED ALONG MIDPOINT OF 3/8" SUPPLY TUBING. IF THIS OPTION IS CHOSEN, USE A 3/8" X 3/8" COMPRESSION CONNECTOR TO CONNECT THE INLET FITTING TO THE WATER LINES.

SEE MANUFACTURER'S INSTALLATION TEMPLATE FOR MOUNTING PEDAL.



3/8" COMPRESSION FITTING OR OPTIONAL FEMALE QUICK DISCONNECT PROVIDED & INSTALLED BY CONTRACTOR.

D-13 AIR VALVE
 NOT TO SCALE



GAS VALVE PROVIDED AND INSTALLED BY CONTRACTOR. (NEVIN #206 SHOWN)

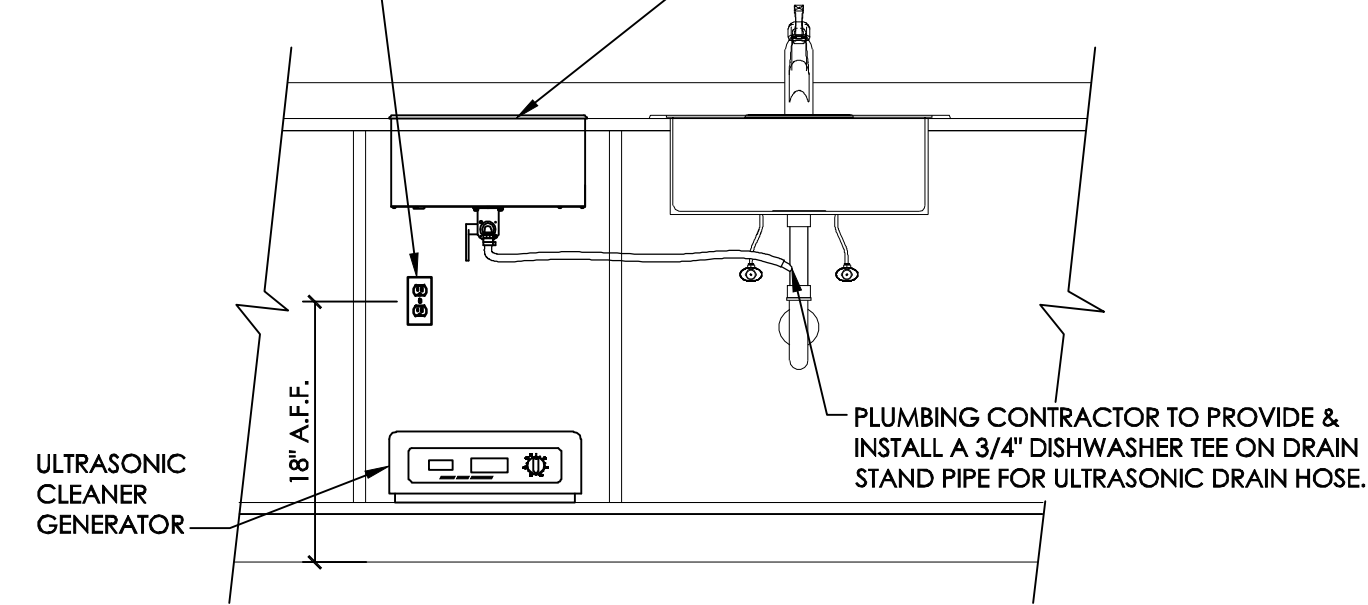
D-13A LAB GAS VALVE
 NOT TO SCALE

D-9B X-RAY EXPOSURE BUTTON
 NOT TO SCALE

NOTE: EXACT LOCATION AND SINK SIDE MAY VARY. TO BE SPOTTED BY HENRY SCHEIN DENTAL EQUIPMENT REP.

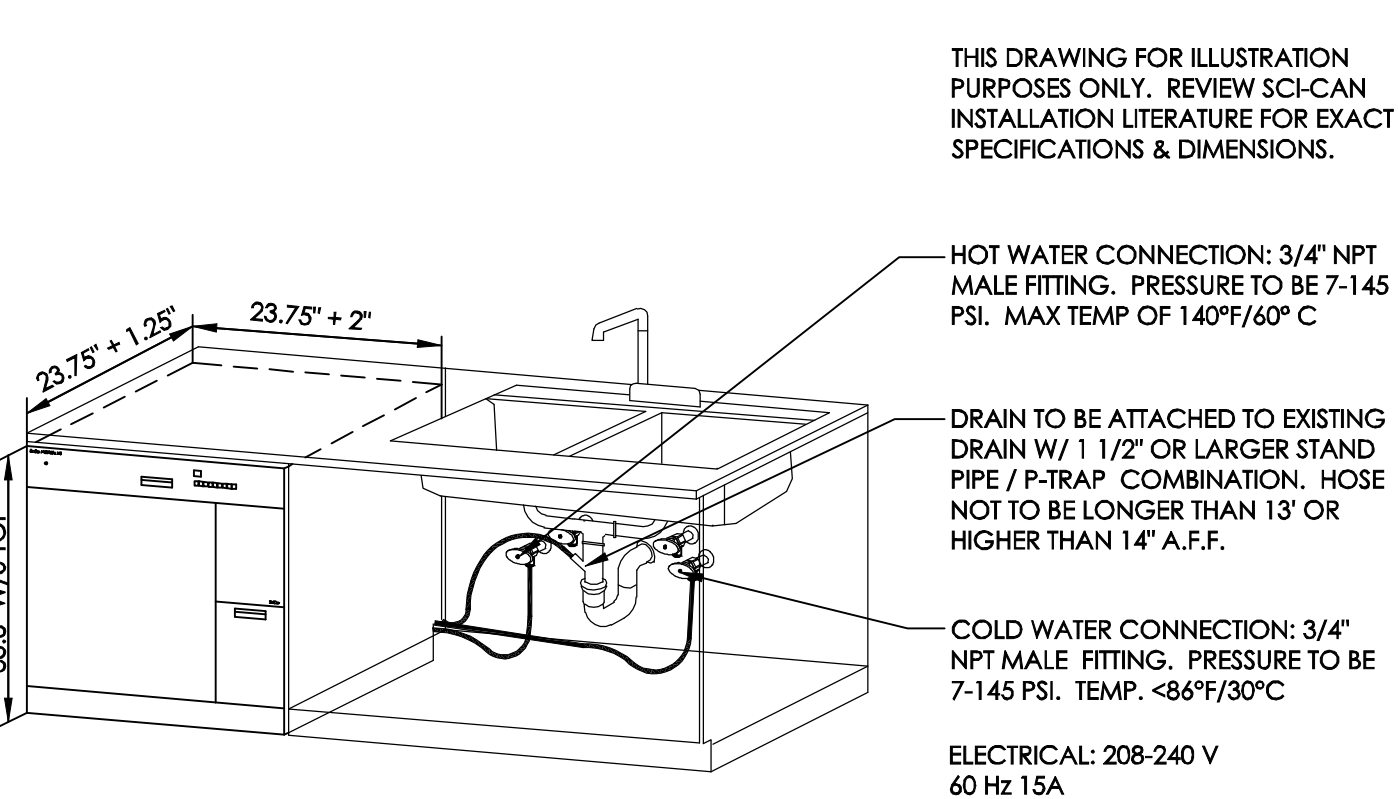
ELECTRICAL: ELECTRICAL CONTRACTOR TO PROVIDE AND INSTALL A BOX WITH 115V DUPLEX RECEPTACLE AT 18" A.F.F.

RECESSED ULTRASONIC CLEANER & GENERATOR PROVIDED AND INSTALLED BY HENRY SCHEIN DENTAL.



D-15 ULTRASONIC CLEANER
 NOT TO SCALE

D-12B TAPMASTER FAUCET CONTROL
 NOT TO SCALE



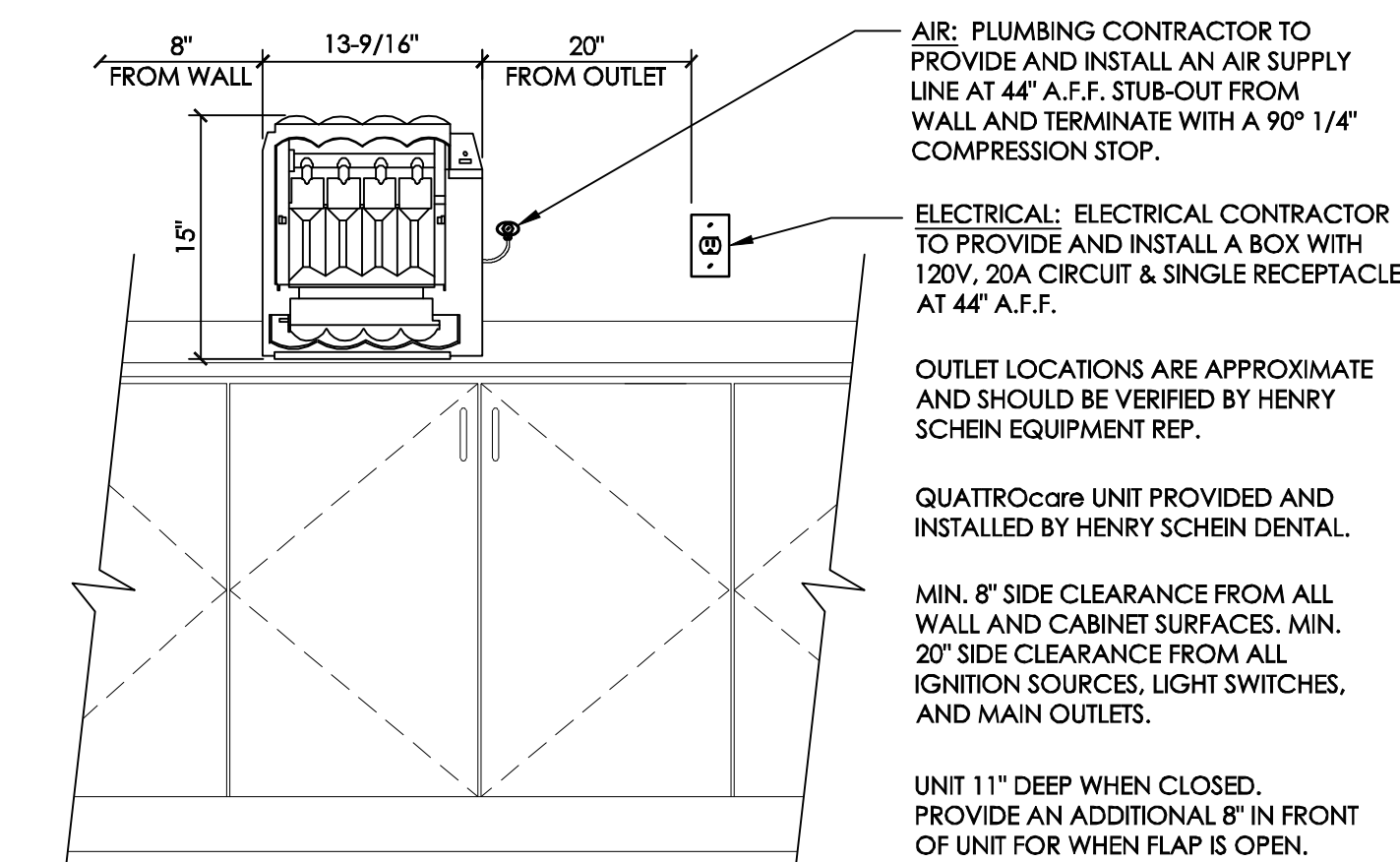
THIS DRAWING FOR ILLUSTRATION PURPOSES ONLY. REVIEW SCI-CAN INSTALLATION LITERATURE FOR EXACT SPECIFICATIONS & DIMENSIONS.

HOT WATER CONNECTION: 3/4" NPT MALE FITTING. PRESSURE TO BE 7-145 PSI. MAX TEMP OF 140°F/60° C

COLD WATER CONNECTION: 3/4" NPT MALE FITTING. PRESSURE TO BE 7-145 PSI. TEMP. -86°F/30° C

ELECTRICAL: 208-240 V 60 Hz 15A

D-15A HYDRIM INSTRUMENT WASHER
 NOT TO SCALE



AIR: PLUMBING CONTRACTOR TO PROVIDE AND INSTALL AN AIR SUPPLY LINE AT 44" A.F.F. STUB-OUT FROM WALL AND TERMINATE WITH A 90° 1/4" COMPRESSION STOP.

ELECTRICAL: ELECTRICAL CONTRACTOR TO PROVIDE AND INSTALL A BOX WITH 120V, 20A CIRCUIT & SINGLE RECEPTACLE AT 44" A.F.F.

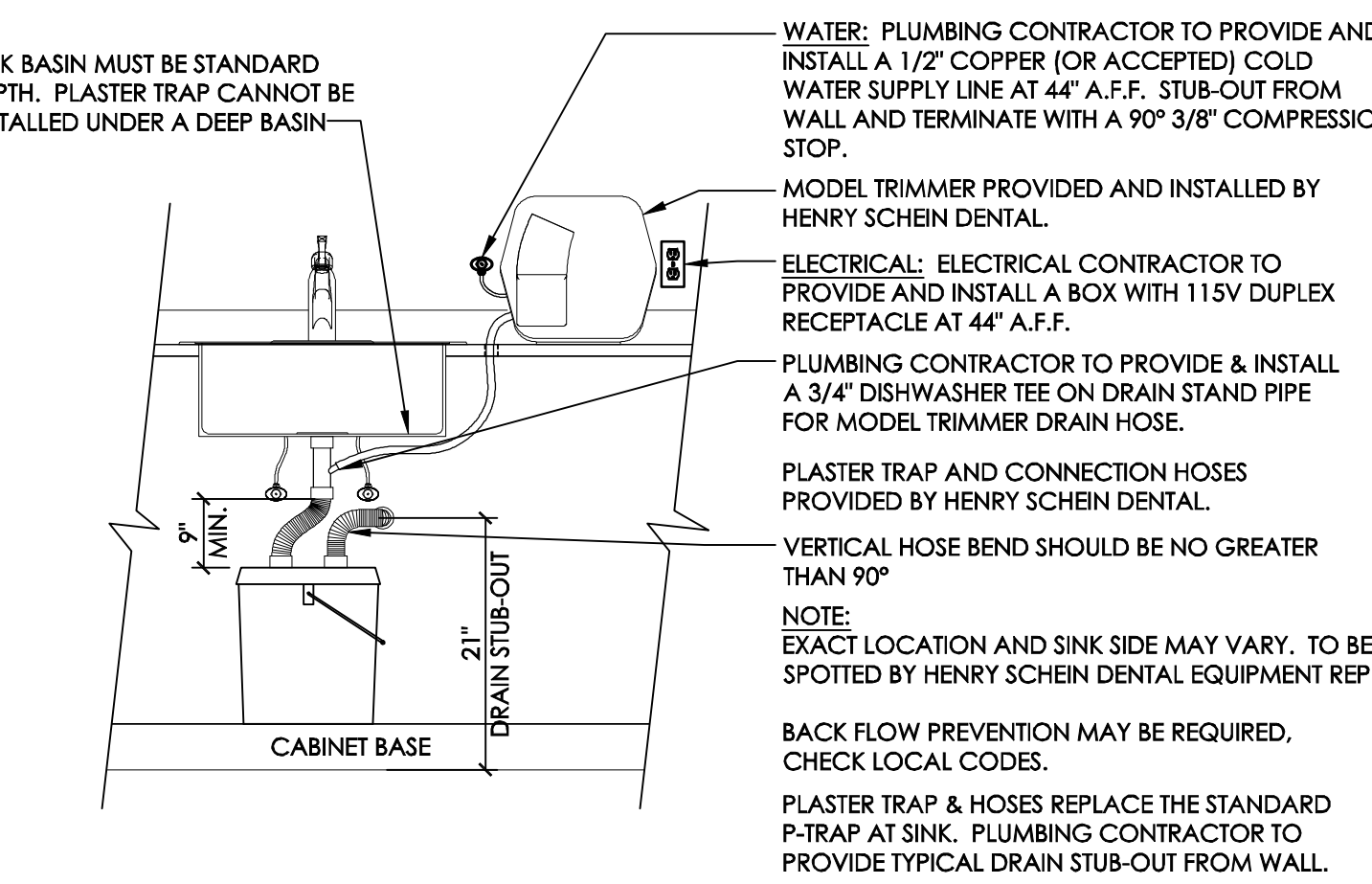
OUTLET LOCATIONS ARE APPROXIMATE AND SHOULD BE VERIFIED BY HENRY SCHEIN EQUIPMENT REP.

QUATROcare UNIT PROVIDED AND INSTALLED BY HENRY SCHEIN DENTAL.

MIN. 8" SIDE CLEARANCE FROM ALL WALL AND CABINET SURFACES. MIN. 20" SIDE CLEARANCE FROM ALL IGNITION SOURCES, LIGHT SWITCHES, AND MAIN OUTLETS.

UNIT 11" DEEP WHEN CLOSED. PROVIDE AN ADDITIONAL 8" IN FRONT OF UNIT FOR WHEN FLAP IS OPEN.

D-15B KAVO QUATROcare
 NOT TO SCALE



SINK BASIN MUST BE STANDARD DEPTH. PLASTER TRAP CANNOT BE INSTALLED UNDER A DEEP BASIN.

WATER: PLUMBING CONTRACTOR TO PROVIDE AND INSTALL A 1/2" COPPER (OR ACCEPTED) COLD WATER SUPPLY LINE AT 44" A.F.F. STUB-OUT FROM WALL AND TERMINATE WITH A 90° 3/8" COMPRESSION STOP.

MODEL TRIMMER PROVIDED AND INSTALLED BY HENRY SCHEIN DENTAL.

ELECTRICAL: ELECTRICAL CONTRACTOR TO PROVIDE AND INSTALL A BOX WITH 115V DUPLEX RECEPTACLE AT 44" A.F.F.

PLUMBING CONTRACTOR TO PROVIDE & INSTALL A 3/4" DISHWASHER TEE ON DRAIN STAND PIPE FOR MODEL TRIMMER DRAIN HOSE.

PLASTER TRAP AND CONNECTION HOSES PROVIDED BY HENRY SCHEIN DENTAL.

VERTICAL HOSE BEND SHOULD BE NO GREATER THAN 90°

NOTE: EXACT LOCATION AND SINK SIDE MAY VARY. TO BE SPOTTED BY HENRY SCHEIN DENTAL EQUIPMENT REP.

D-16 MODEL TRIMMER & DISPOSABLE PLASTER TRAP
 NOT TO SCALE

HENRY SCHEIN
 DENTAL
 10920 WEST LINCOLN AVENUE
 WEST ALLIS, WI 53227
 (800) 336-8897

PROJECT:
WVUSOD
SUNCREST BLVD. CAMPUS
 LOCATION:

HENRY SCHEIN REP:
 JERRY INGAGLIATO
 CENTER:
 PITTSBURGH, PA
 PHONE #:
 (412) 287-0831

IMPORTANT NOTE:
 THIS DOCUMENT HAS BEEN PREPARED AS AN INSTRUMENT OF PROFESSIONAL SERVICE, AND IS NOT AN ARCHITECTURAL PLAN. IDEAS/DESIGNS INCLUDED HEREIN ARE THE SOLE PROPERTY OF HENRY SCHEIN DENTAL, AND ARE PROTECTED UNDER COPYRIGHT. THEY MAY NOT BE USED OR REPRODUCED WITHOUT EXPRESSED WRITTEN CONSENT OF HENRY SCHEIN AND FULL PAYMENT OF ANY ASSOCIATED DESIGN FEES.
ALL DIMENSIONS ARE SUBJECT TO JOB-SITE VERIFICATION.

DRAWING NAME:
 WVUSOD-F
 PROJECT START DATE:
 01/05/2013
 FINALS START DATE:
 02/14/2013
 DRAWN BY: TAS
 FINALS BY: TAS
 CHECKED BY: TJK

REVISIONS:

 INT.SQ.FT. = ---

SCALE: SH. SIZE:
 SEE DTL. D
MECHANICAL
DETAILS

MD.1

