

FOR SALE

315  
24TH  
ST

Oakland, CA 94612



Exclusively Listed by

Steve Banker

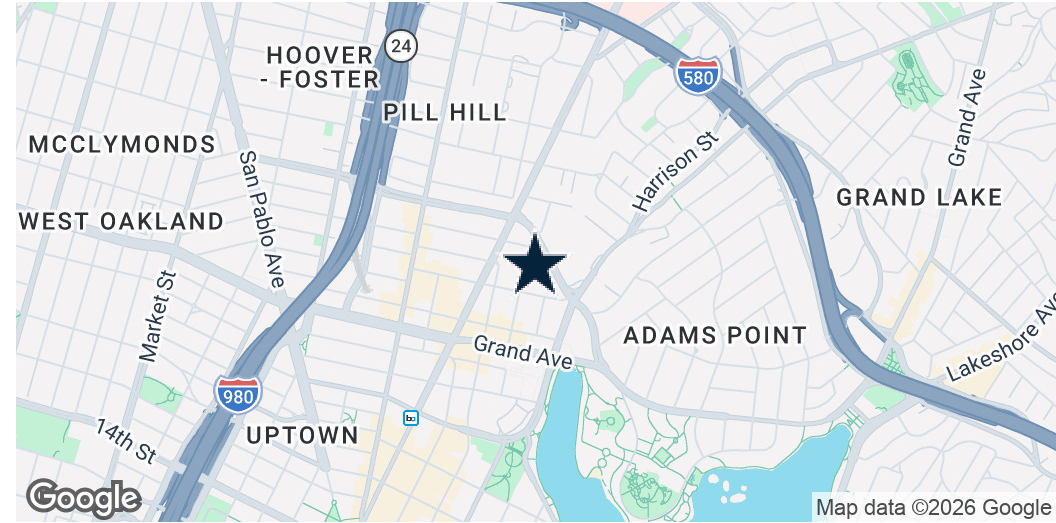
President

510.763.7090 x206  
sbanker@lcbassociates.com

Brad Banker

510.763.7090 x215  
bbanker@lcbassociates.com

# 315 24th St Oakland, CA 94612



## OFFERING SUMMARY

|                |           |
|----------------|-----------|
| Sale Price:    | \$950,000 |
| Building Size: | 1,826 SF  |
| Lot Size:      | 5,000 SF  |
| Price / SF:    | \$520.26  |
| Year Built:    | 1916      |
| Zoning:        | D-BV-1    |

## PROPERTY OVERVIEW

Rare stand alone vacant retail warehouse with large parking lot in high profile Broadway Valdez location. Building Features a small restroom, small storage area, and open warehouse area with direct access to exterior parking lot. Zoned DBV-1, which allows for ground floor retail, personal instruction and medical uses (Buyer to verify). Over 1200 newer construction residential units within a two block radius. Local Favorites Highwire Coffee, Tarts de Feybesse, and Flour and Water Pizza located within a block of the subject property. Building square footage is based on public record, Buyer to Verify.

## PROPERTY HIGHLIGHTS

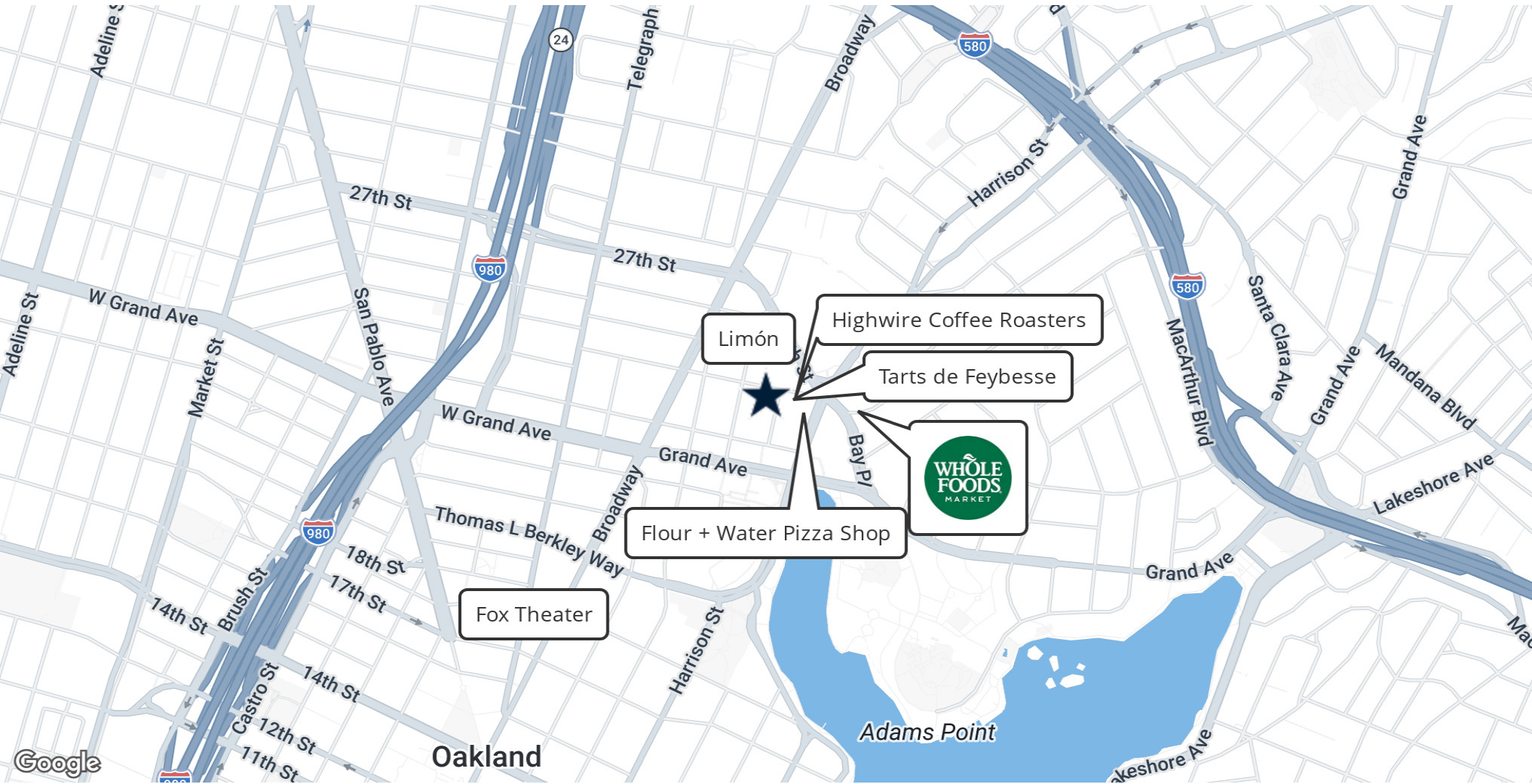
- High Ceilings and Corner Lot Exposure
- Large Gated Parking Area with twelve striped stalls
- Located in Broadway Valdez with over 1200 newer construction units within 2 blocks
- In close proximity to Whole Foods, BART, and many local eateries.



Steve Banker  
510.763.7090 x206  
sbanker@lcbassociates.com

Brad Banker  
510.763.7090 x215  
bbanker@lcbassociates.com

315 24th St Oakland, CA 94612



**LCB**  
ASSOCIATES

Steve Banker

Brad Banker

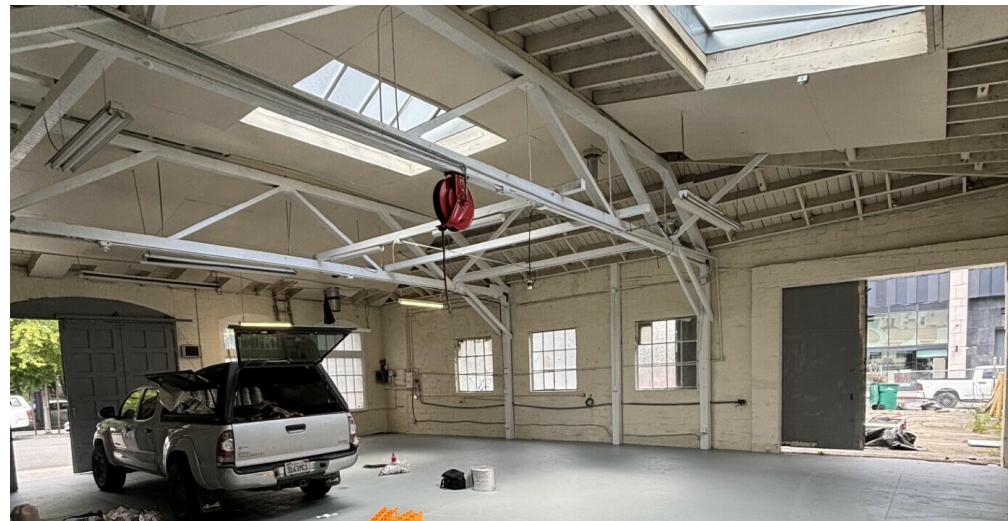
510.763.7090 x206

510.763.7090 x215

sbanker@lcbassociates.com

bbanker@lcbassociates.com

315 24th St Oakland, CA 94612



**LCB**  
ASSOCIATES

Steve Banker  
510.763.7090 x206  
sbanker@lcbassociates.com

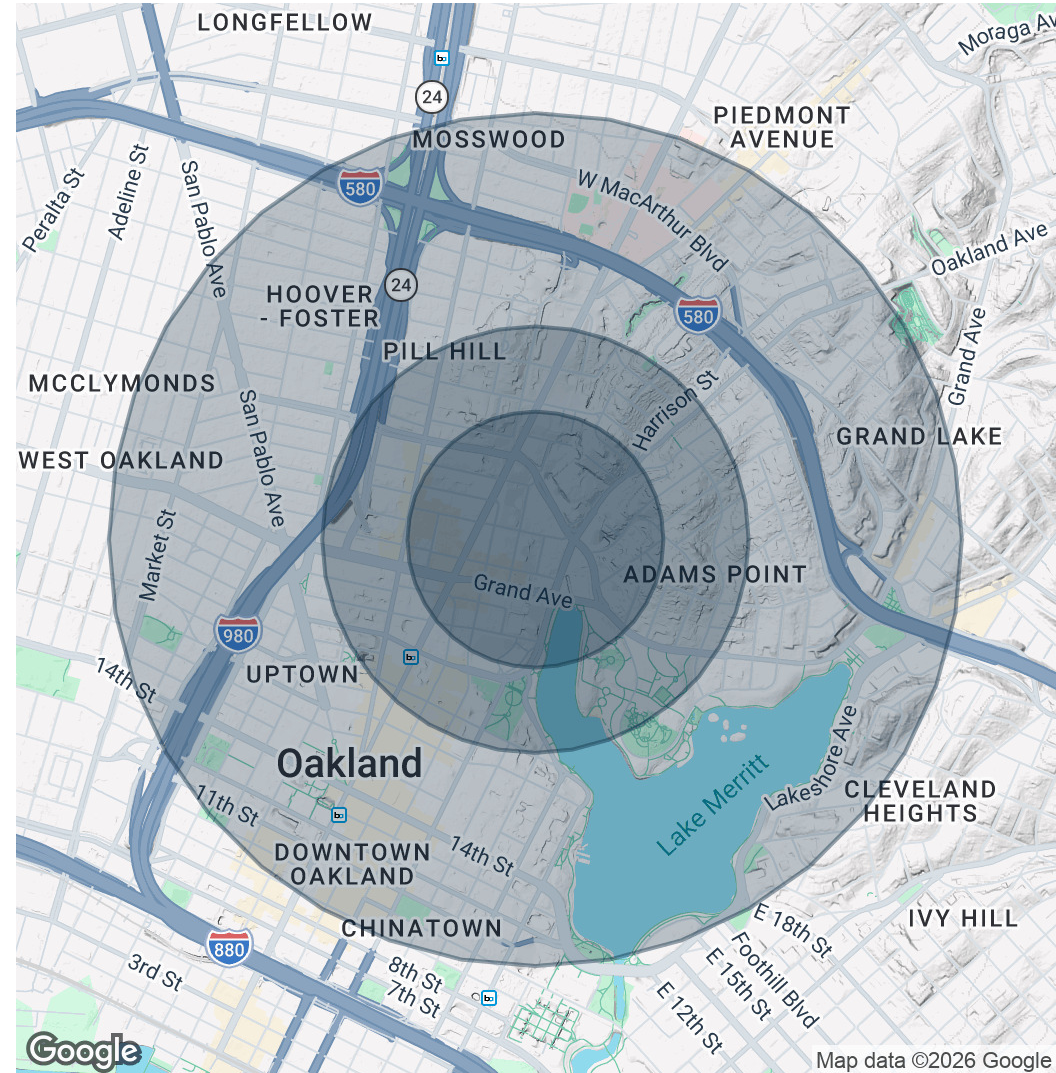
Brad Banker  
510.763.7090 x215  
bbanker@lcbassociates.com

# 315 24th St Oakland, CA 94612

| POPULATION           | 0.3 MILES | 0.5 MILES | 1 MILE |
|----------------------|-----------|-----------|--------|
| Total Population     | 6,164     | 17,499    | 60,582 |
| Average Age          | 43        | 43        | 43     |
| Average Age (Male)   | 42        | 42        | 42     |
| Average Age (Female) | 44        | 43        | 43     |

| HOUSEHOLDS & INCOME | 0.3 MILES | 0.5 MILES   | 1 MILE      |
|---------------------|-----------|-------------|-------------|
| Total Households    | 3,604     | 9,460       | 31,002      |
| # of Persons per HH | 1.7       | 1.8         | 2           |
| Average HH Income   | \$143,913 | \$135,455   | \$130,210   |
| Average House Value | \$960,419 | \$1,006,717 | \$1,039,712 |

2020 American Community Survey (ACS)



Steve Banker  
510.763.7090 x206  
sbanker@lcbassociates.com

Brad Banker  
510.763.7090 x215  
bbanker@lcbassociates.com