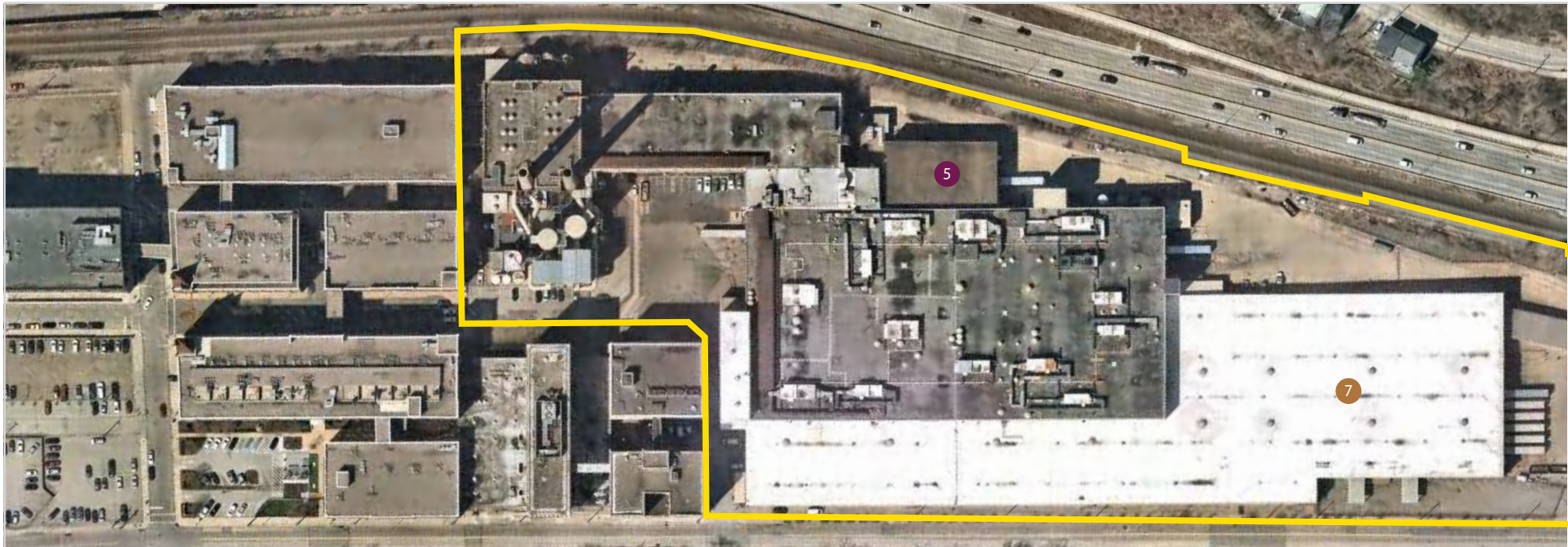
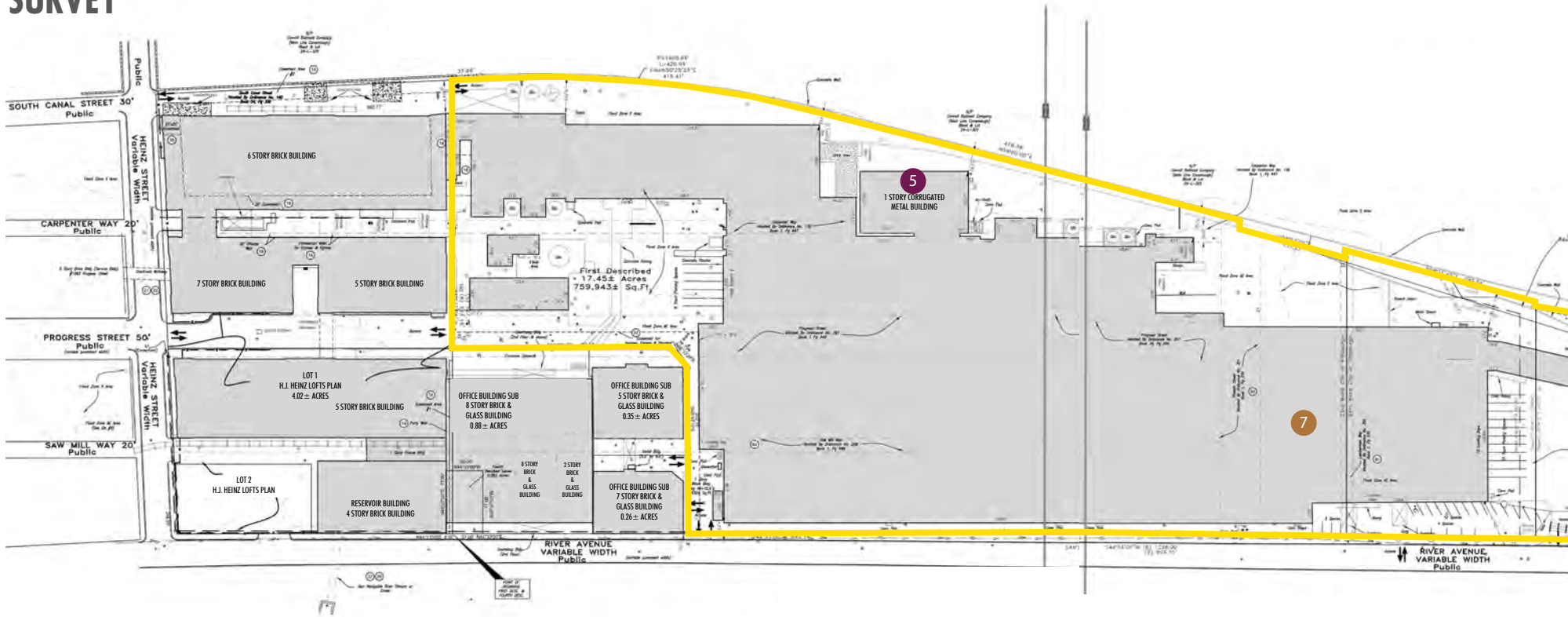


SURVEY



| # | Name | Size (SF) | Year Built/ Renovated | Stories | Floorplate | Clear Height | Elevators/ Stairs | Dock Doors |
|---|------------------|-----------|--------------------------|---------|------------|--|----------------------|----------------------|
| 5 | Freezer Building | 10,125 | 1990 | 1 | 10,125 | 33' to underside of truss, 38' to ceiling (5' truss) | - | K Dock: 2 |
| 7 | 230 Warehouse | 146,700 | 1990 | 1 | 146,700 | 25' to underside of truss, 33' to ceiling (8' truss) | - | C Dock: 11 |
| 8 | 240 Warehouse | 140,030 | 2000 | 1 | 140,030 | 31' to underside of center beam, 28' on each side (2' beams) | - | A Dock: 9, B Dock: 7 |

