

2634 E LAKE RD

Abilene, TX 79601

EXECUTIVE
SUMMARY



OFFERING SUMMARY

Sale Price: \$9.00 / SF

Available SF:

Lot Size: 1.5 Acres

Price / SF: \$9.00

PROPERTY OVERVIEW

Pre-engineered site located in North East Abilene off I-20 at the intersection of HWY 351 and East Lake Road. 1.55 acre tract with build to suit option next to Heff's Burgers and Two Profs Ice Cream.

PROPERTY HIGHLIGHTS

- Retail Growth Area
- Next to Two Profs Ice Cream & Heff's Burgers
- Utilities to Site
- Post Development
- Pre-Engineered Site
- Build to Suit

ERIK PAUL JOHNSON

325.439.0186

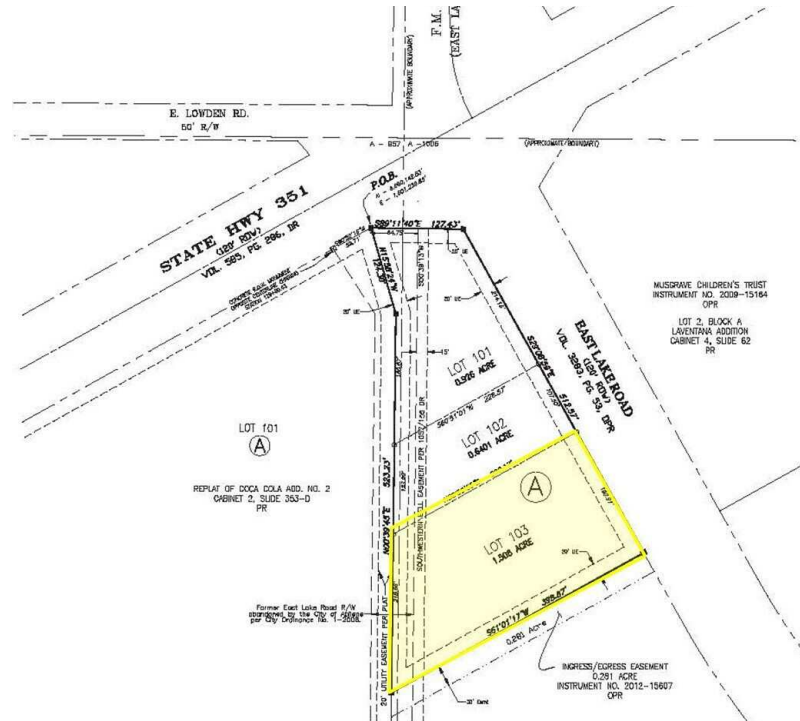
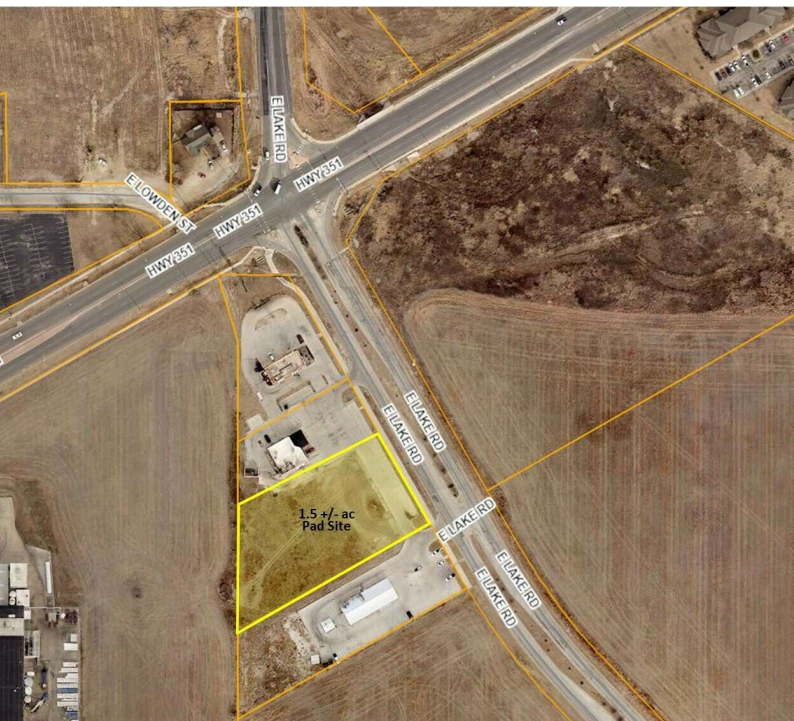
erik@pauljohnsonrealtors.com



2634 E LAKE RD

Abilene, TX 79601

ADDITIONAL
PHOTOS



ERIK PAUL JOHNSON

325.439.0186

erik@pauljohnsonrealtors.com



4633 South 14th Street | Abilene, TX 79605 | 325.698.5661

Brokerage makes no representation as to accuracy of all data presented.

PAULJOHNSONREALTORS.COM

2634 E LAKE RD

Abilene, TX 79601

LOCATION
MAPS



ERIK PAUL JOHNSON

325.439.0186

erik@pauljohnsonrealtors.com

4633 South 14th Street | Abilene, TX 79605 | 325.698.5661

Brokerage makes no representation as to accuracy of all data presented.

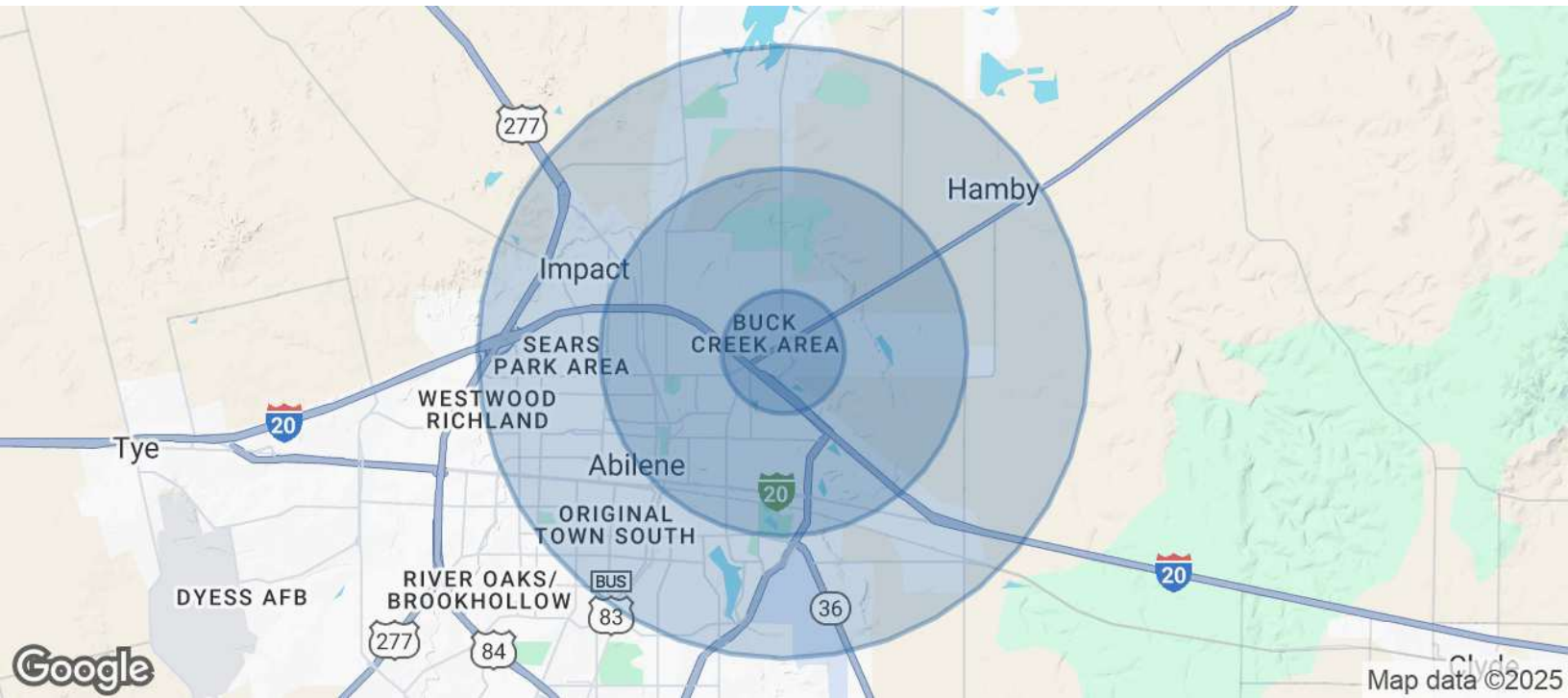


PAULJOHNSONREALTORS.COM

2634 E LAKE RD

Abilene, TX 79601

DEMOGRAPHICS
MAP & REPORT



POPULATION	1 MILE	3 MILES	5 MILES
Total Population	1,756	19,782	54,467
Median age	32.9	27.2	32.4

HOUSEHOLDS & INCOME	1 MILE	3 MILES	5 MILES
Total households	731	7,719	20,478
# of persons per HH	2.39	2.29	2.49
Average HH income	\$94,198	\$58,128	\$59,126

* Demographic data derived from U.S. Census Bureau, Census 2010 Summary File 1. Esri forecasts for 2019

ERIK PAUL JOHNSON

325.439.0186

erik@pauljohnsonrealtors.com



4633 South 14th Street | Abilene, TX 79605 | 325.698.5661

Brokerage makes no representation as to accuracy of all data presented.

PAULJOHNSONREALTORS.COM