




OFFICE / MEDICAL FOR SUBLEASE

1974 Blue Mesa Court, Loveland, CO 80538

Private offices available for sublease to professional office and medical tenants. Centrally located in the Banner/McKee medical campus, this space has a great location and identity, with easy accessibility.

FEATURE HIGHLIGHTS

-  Central Location
-  Natural Light
-  Clean
-  Near Parks
-  Medical
-  Quality Finishes
-  Kitchenette
-  Visibility/Location

PROPERTY OVERVIEW

OFFICE A	Turnkey medical exam suite available for use Monday/Tuesday.
LEASE RATE	\$500/month FSG
OFFICE C	Private office with great identity and an abundance of natural light.
LEASE RATE	\$500/month FSG
EXPENSES (EST)	Included
AVAILABLE	Immediately
PARKING	On-Site
ZONING	R3
LEASE TERM	Negotiable

FOR MORE INFORMATION:



Savannah Paquette

Broker Associate

303.449.2131 ext 133

savannah@coloradogroup.com

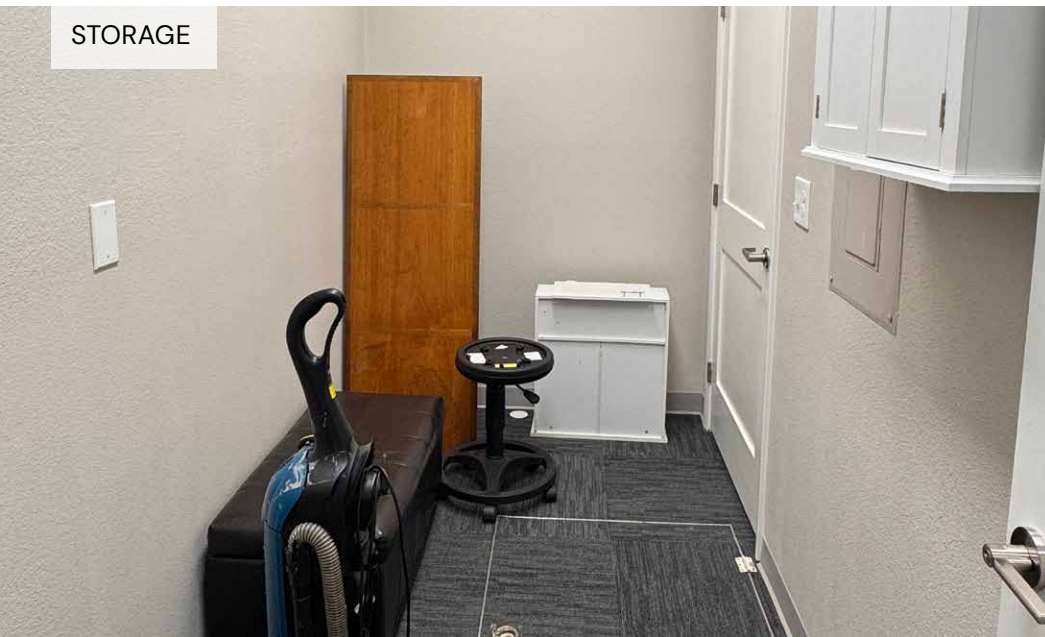
FRONT LOBBY/ RECEPTION



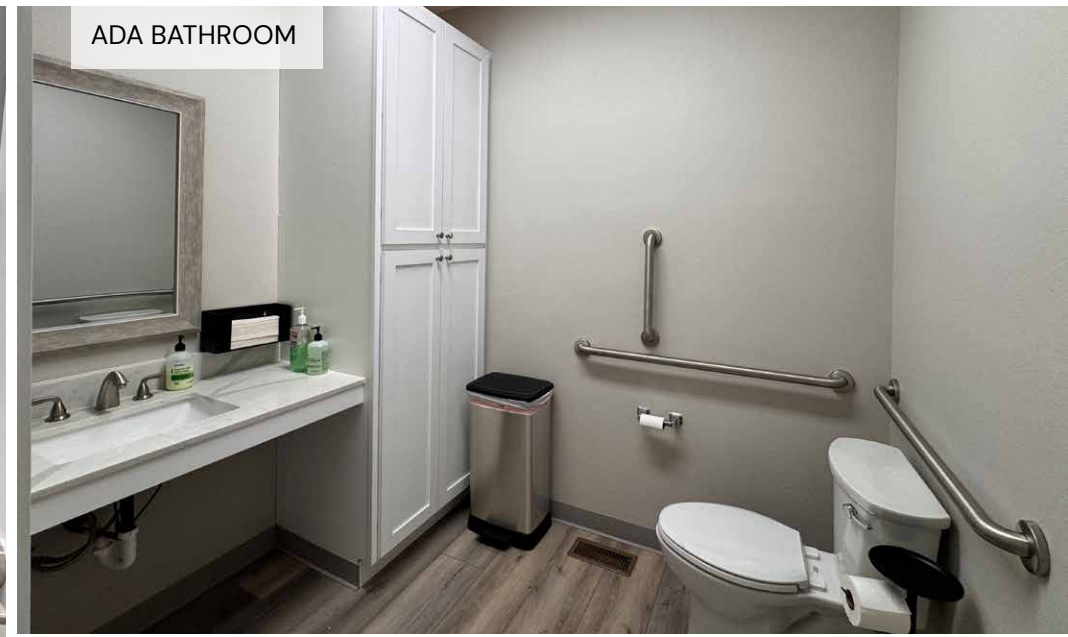
COMMON AREA / BREAK ROOM / KITCHEN



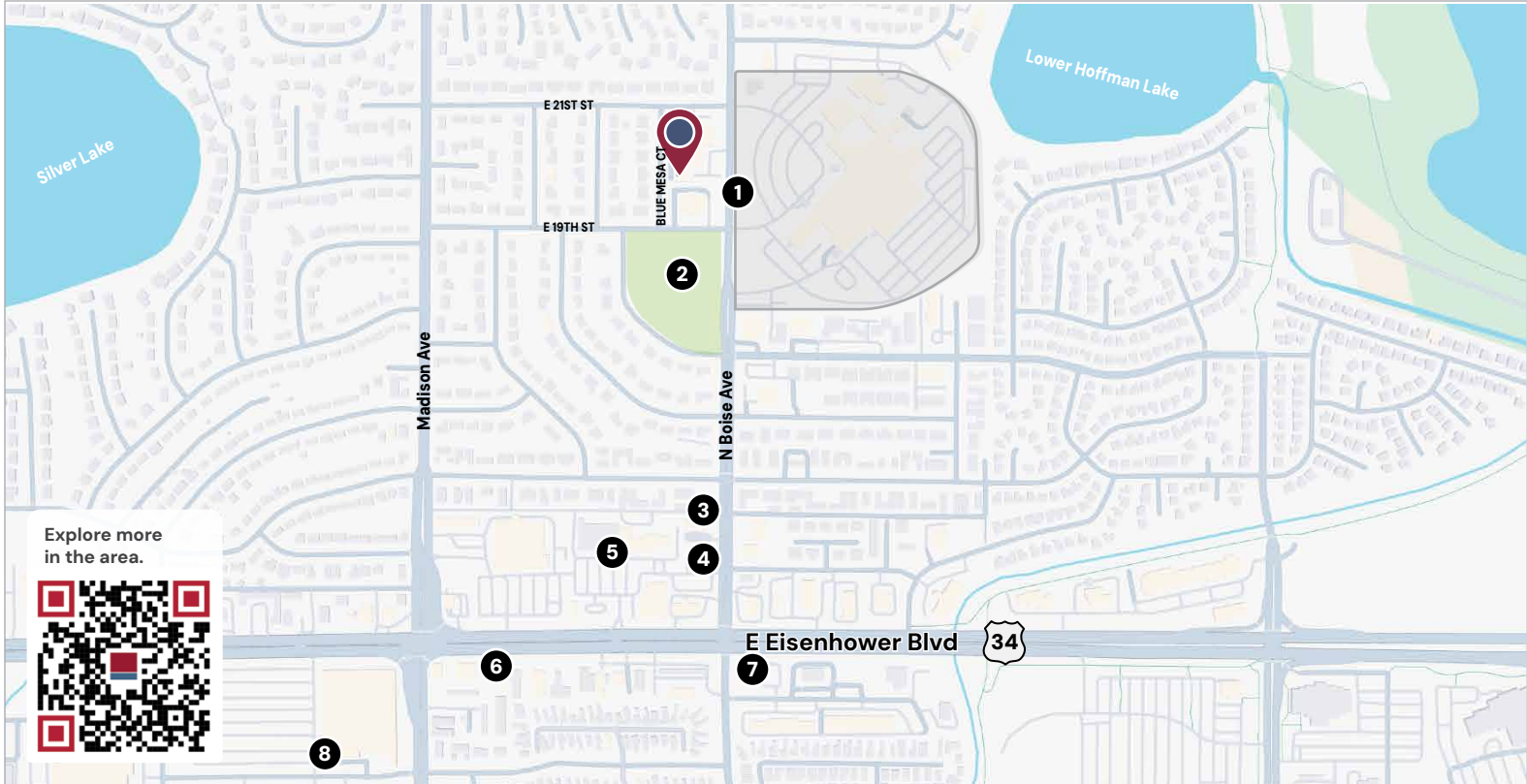
STORAGE



ADA BATHROOM



PROPERTY LOCATION



- 1 Banner Health McKee Medical Center
- 2 McKee Park
- 3 Pizza Street
- 4 Loveland Breakfast Club
- 5 Planet Fitness
- 6 Thai Thai'm
- 7 McGraff's American Grill
- 8 The Home Depot

