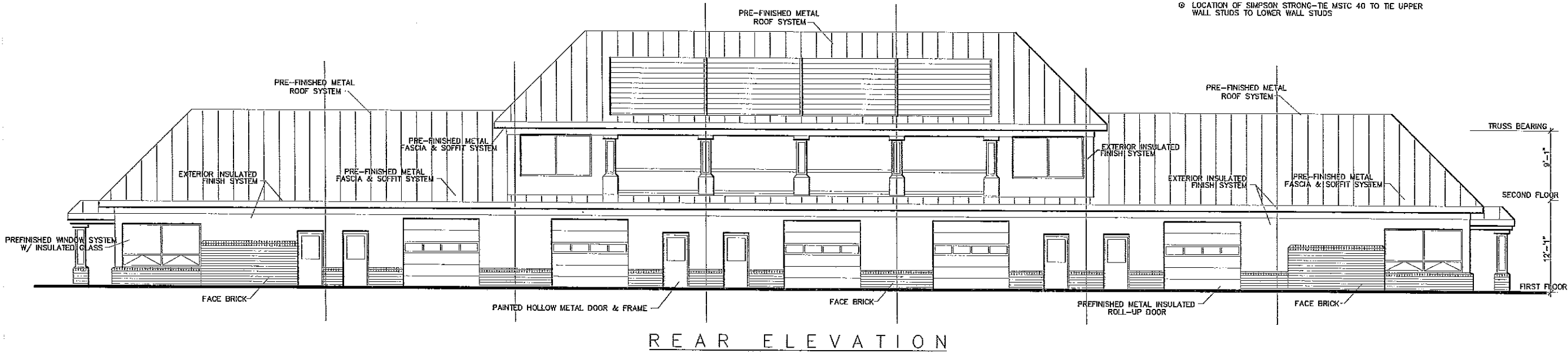


- ⊗ LOCATION OF SIMPSON STRONG-TIE PHD5-SDS3 HOLD DOWNS 5/8"ØØØ THREADED RODS & STL. PLATE. SEE DETAIL ON SH. S-3
- ⊙ LOCATION OF SIMPSON STRONG-TIE MSTC 40 TO TIE UPPER WALL STUDS TO LOWER WALL STUDS



SCALE: 1/8" = 1'-0"

WALTER H. LUECKE A.L.A. ARCHITECT  
105 E. RIDGE MOUNTAIN RD. #1763  
COMMERCIAL INDUSTRIAL & RESIDENTIAL DESIGN

CONSULTANT

PROGRESS PRINTING  
PERMIT: 10/15/14  
PERMIT REVISIONS: 373/04

ISSUED FOR CONSTRUCTION

XXX

REVISIONS

NO.	REVISION	DATE

PROPOSED OFFICE/STORAGE BUILDING  
TWIN ARCH BUSINESS PARK - LOT 24  
MT. AIRY, MARYLAND  
SECOND FLOOR / REAR ELEVATION

REGISTRATION SEAL

DRAWING NUMBER

A-2