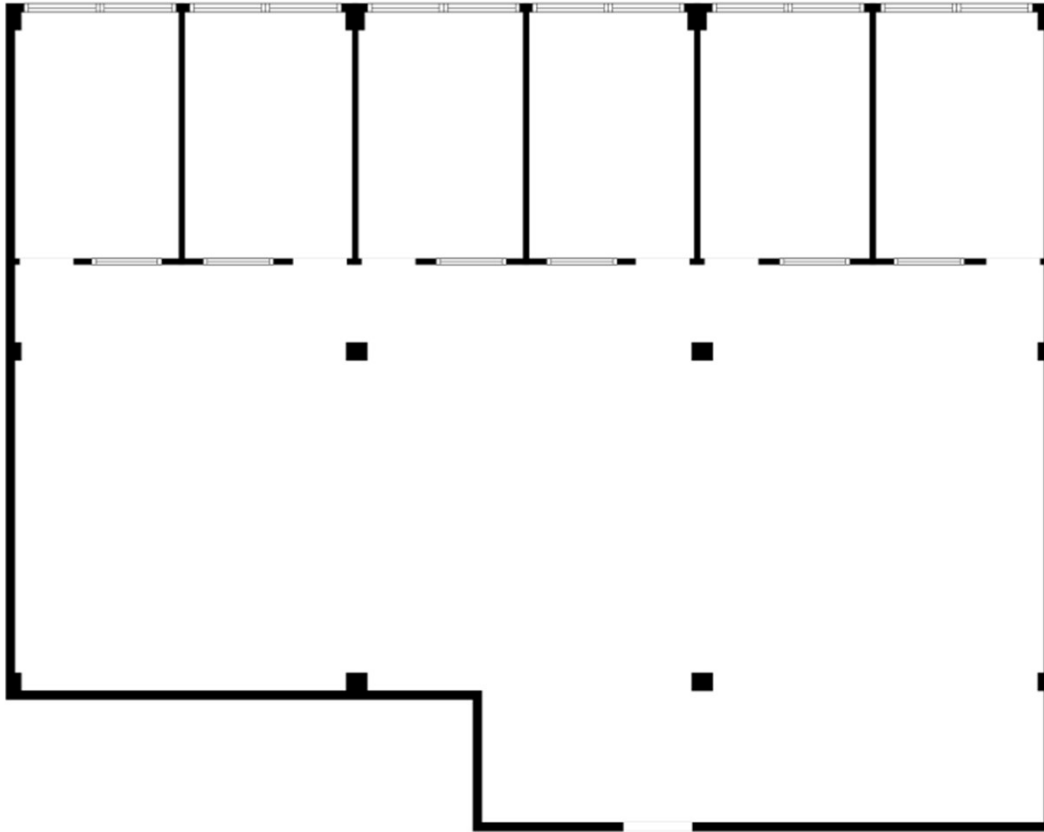


SUITE 435A | 3,006 SF

Two Woodfield Lake | 1100 E Woodfield Rd | Schaumburg, IL



SPACE NOTES

- Asking Rate: \$19.50 PSF MG
- Class A Common Area Finishes
- Turn-Key Buildouts
- Conference Facility
- Renovated Tenant Lounge



Ryan Moen, SIOR
630.480.6346
RMoen@VersaRES.com

Steven Rea
630.468.1780
SRea@VersaRES.com

John Millner, CCIM
630.480.6342
JMillner@VersaRES.com

1 MID AMERICA PLAZA, 3RD FLOOR
OAKBROOK TERRACE, IL 60181
630.480.6413

EXCLUSIVELY LISTED BY

VERSA
REAL ESTATE SERVICES